



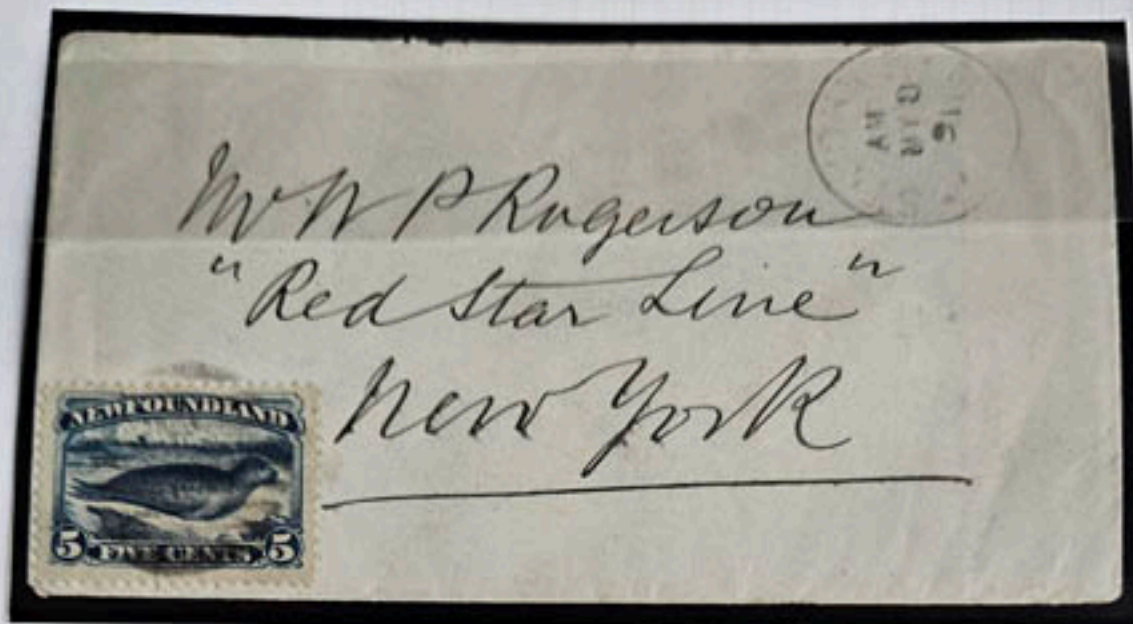
44X3, and 48.



48x2, and 56x2

MP 48 & 56 2c Red Orange Cod & 1/2c Rose Red Wld Dog, 2 singles
of each tied on cover to USA by grids with "ST. JOHN'S NEWP'D NR
28/93" cds below. Stamps oxidized & cover toning. (Eastern Auction
10/05 @ \$195)
84004.0 VG on Cover

CS \$ \$169.50



54.

WF 54 5c Dark Blue Harp Seal tied on LL corner of small "Lady's cover" to New York with cork cancel with "ST. JOHN'S NY 8/91" cds at UR. Backstamped "A / NEW YORK MAY 13 - PAID PO ALL / 91" in double circle. Lovely cover.



58.



58.

** NF 58 1/2c Black Newfoundland Dog vertical pair tied on small "Lady's cover" by grid cancels with "ST. JOHN'S NEWF'D AU 3/87" cds. Small tear UL far from stamps. Nice cover regardless
 56527.0 F Used on Cover NSSC-US4140.00 \$95.00

Cover to Minneapolis via Boston: Registered: 1899



18.



Reverse of above cover photo

The Future King Edward VIII: Age Five



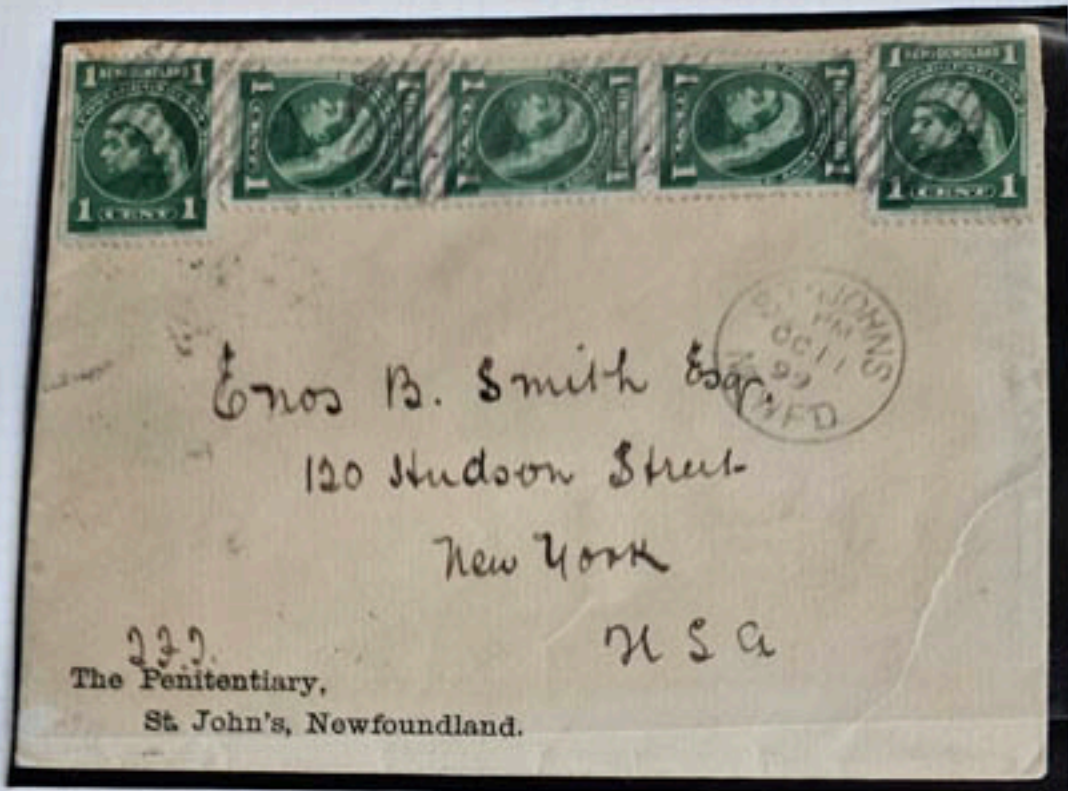
78.



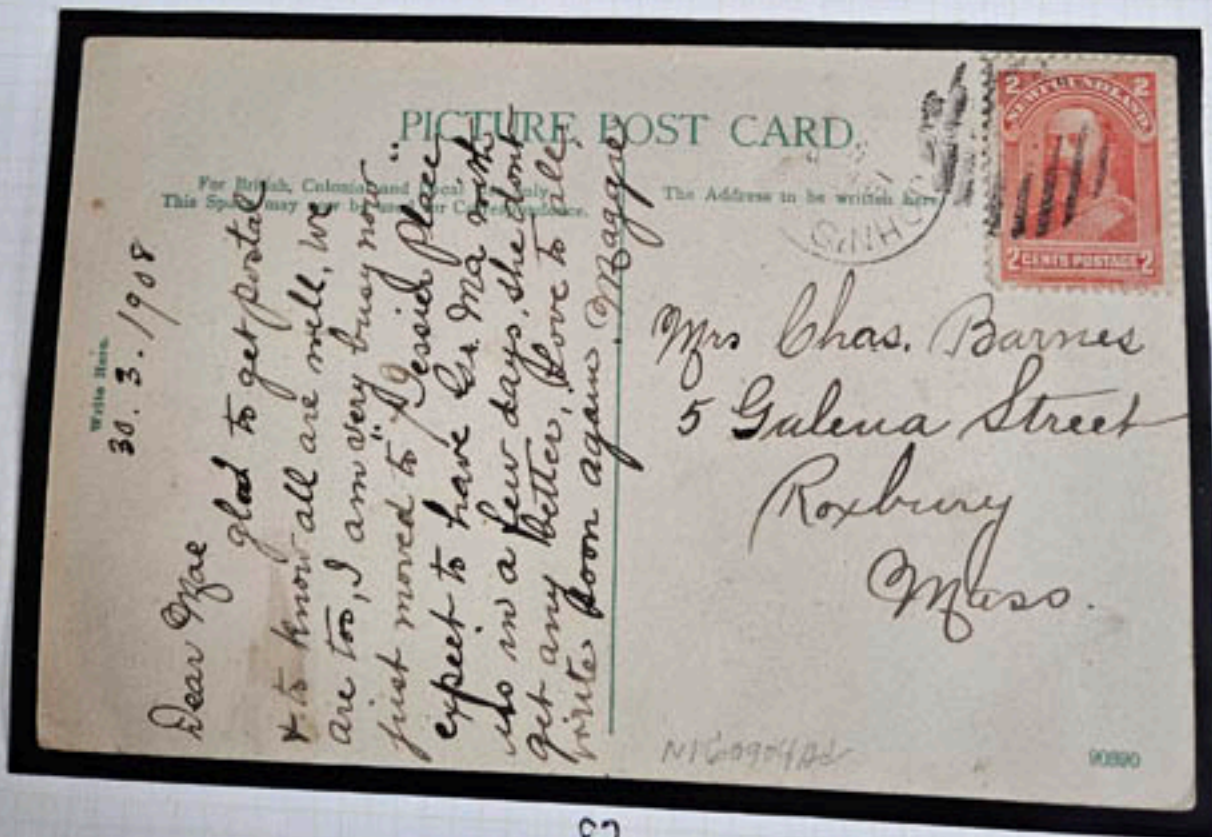
78x4, 80, 82, and 83



80.



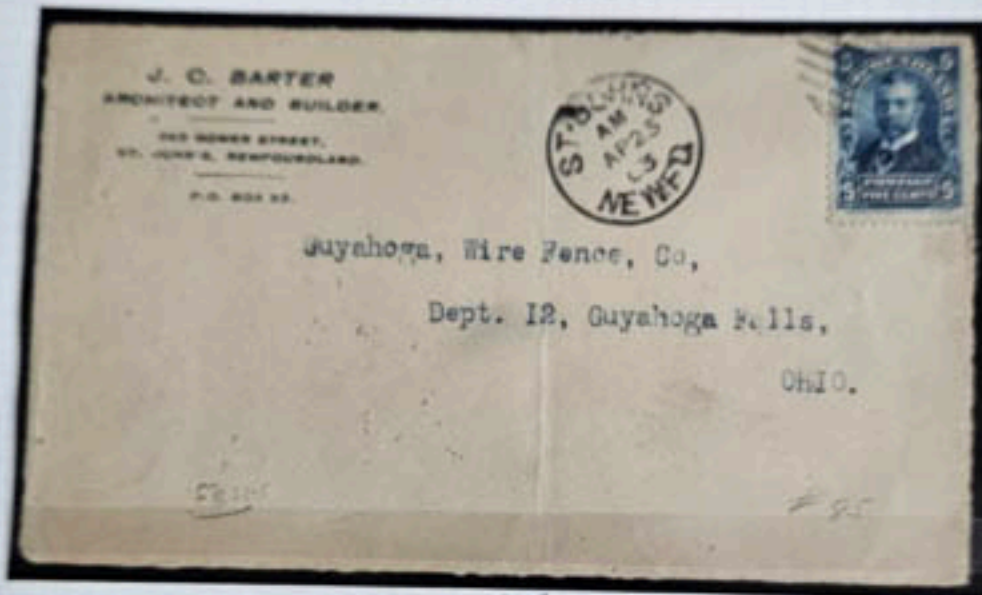
80X5.



82.



82, 83, 85.



85.



85.x2.