

ENVELOPES

1853-55



(U3)



(U5)



(U7)



(U1)



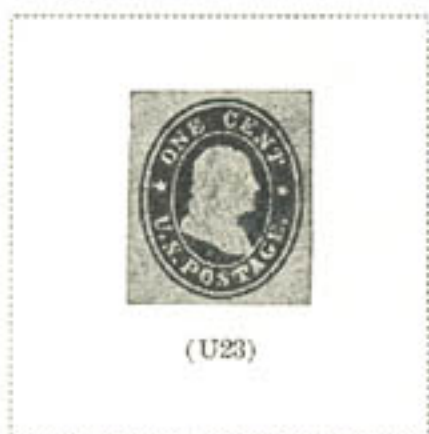
ENVELOPES

1860-61



1 C
BLUE
ON ORANGE

(W22)



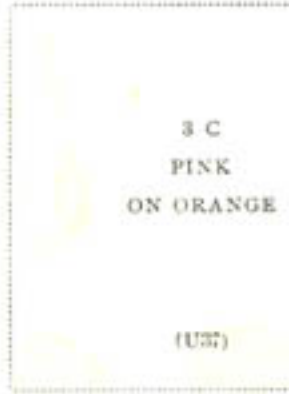
1 C
BLUE
ON MANIL

(W25)



ENVELOPES

1861

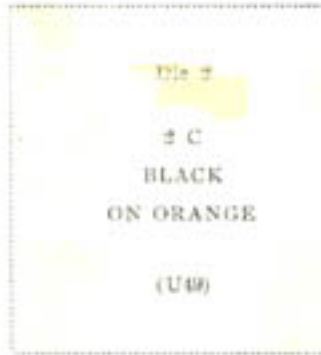
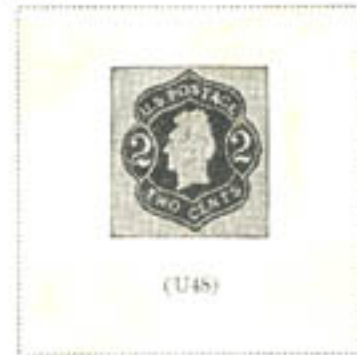


3 C
PINK
ON ORANGE

(U37)



1863-64



2 C
BLACK
ON ORANGE

(U48)

(U49)

ENVELOPES

1863-64



1864-65



ENVELOPES

1865



1870-71



ENVELOPES

187



(U89)

10 C
OLIVE BLACK
ON AMBER

(U90)



ENVELOPES

1870-71



1874-86



ENVELOPES

1874-86



Die 4
2 C
VERMILION
ON MANILA
(W13)

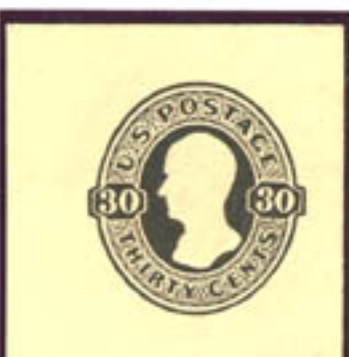


Die 5
2 C
VERMILION
ON ORANGE
(U14)



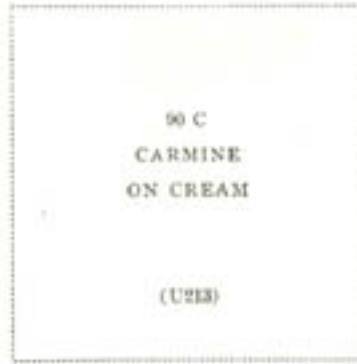
ENVELOPES

1874-86

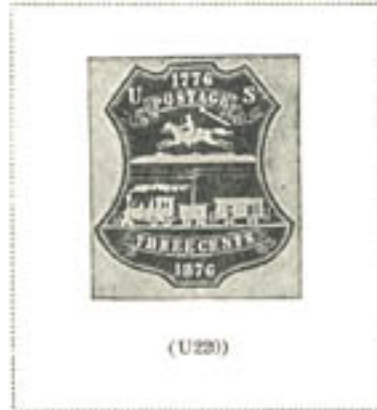


ENVELOPES

1874-86

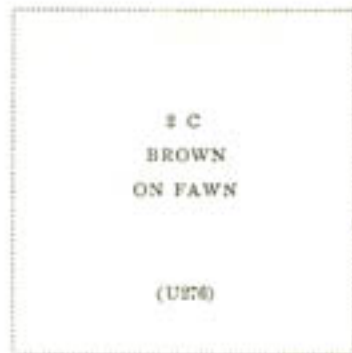
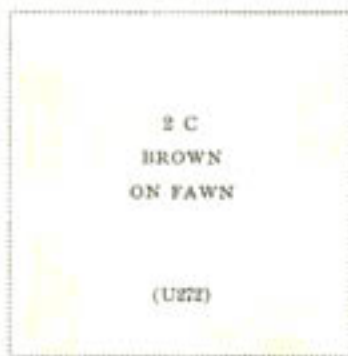
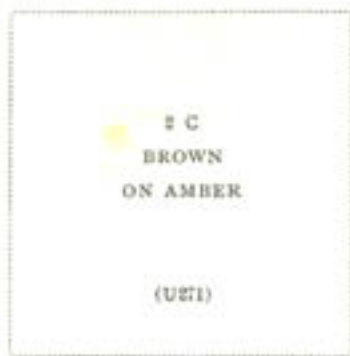


1876



ENVELOPES

June, 1884



1884-86



ENVELOPES

1884-86

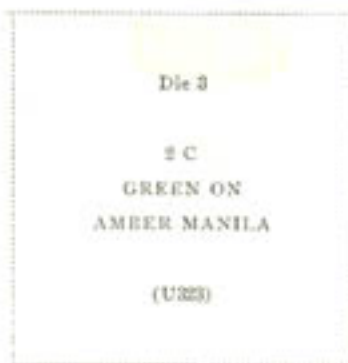
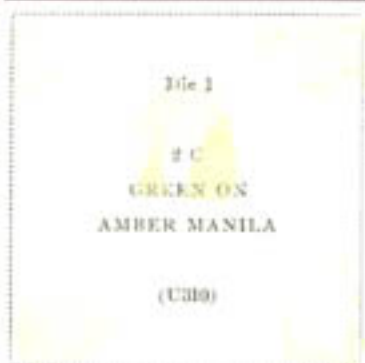


1887-94



ENVELOPES

1887-94



ENVELOPES

1920-21



Surcharged like cat
 2 C
 On 1 C
 GREEN
 ON WHITE
 (U451A)

2
 |||| ||||
 On 1 C
 GREEN
 ON WHITE
 (U452)

On Issue of 1907-10
 2 C
 On 2 C
 CARMINE
 ON WHITE
 (U453)

2 C
 On 2 C
 CARMINE
 ON BLUE
 (U453B)

2 C
 On 2 C
 CARMINE ON
 ORIENTAL BUFF
 (U453C)

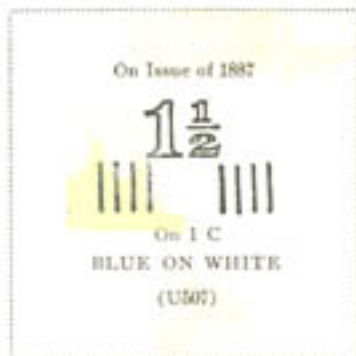


2 C
 On 2 C
 CARMINE
 ON AMBER
 (U455)



ENVELOPES

1925



ENVELOPES

1925

On Issue of 1903

1½ C
On 1 C
GREEN
ON WHITE

(U508A)



OFFICIAL ENVELOPES

War Department

1873



6 C
VERMILION
ON CREAM

(U008)



OFFICIAL ENVELOPES

War Department

1875



10 C
RED
ON AMBER

(U060)



12 C
RED
ON AMBER

(U062)



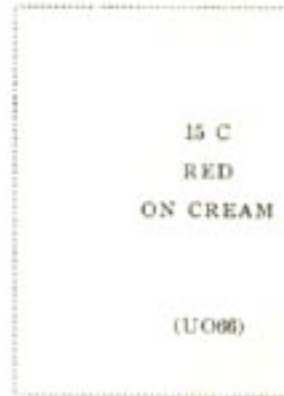
12 C
RED
ON CREAM

(U063)



15 C
RED
ON AMBER

(U065)



15 C
RED
ON CREAM

(U066)



30 C
RED
ON CREAM

(U068)

Postal Savings

1911

