

1857-1862



1.



5.



11a.



12c



11a



12a
Used



19.



18.



20.



22.



23.



12F.

NF 12F 4d Orange FORGERY by Dneglia, originally sold by & thus attributed to Panelli. ORANGE is close to real issued colour. Wide margin PAIR. (single \$24.95)
53854.18 VF Unused \$ 49.50



22F.

NF 22F 8d Brown Rose FORGERY by Dneglia, originally sold by & thus attributed to Panelli. Intended to pass for the 1861 issue. Wide margin PAIR. (single \$14.95)
53854.19 VF Gummied \$ 29.50



25A

NH

Yellow Brown Plate Proof on Card: Block of Six: Post Imprint at left: Printed by the American Bank Note Co. of New York:



27P

Black Proof on Original Card

NF 27P var 10c Black Prince Albert PLATE PROOF on India mounted on 69x88mm card with "Black" typed above & "P23" in pencil at bottom. Small scissor cut at bottom of proof just touches design. Thought to be from printer's ledger book.



28P:

NF 31P 24c Queen Victoria PLATE PROOF pair on India in Blue. With PRE-PRINTING crease in paper at centre, affecting corner of both stamps. A nice little variety.
75166.1 VF CS as normal \$130.00 \$149.50



31P

Pre-Printing Paper Crease



30TC



30TC



30P-TSAa-

NF 30P-TSAa 30c Fishing Ship TRADE SAMPLE PROOF in Deep Purplish Plum shade on horizontally wove paper (.0035). Thinned which is typical of these proofs from the trade sample sheet (most examples have some thinning & are faded).
 58344. 0 o/w VF \$ 75.00



30P
In Issued Color



30P



32,7c.



32TC

NF 32TCviii 1c Prince Albert PLATE PROOF in Blue on India.
 58680.2 IF CS \$100.00 \$95.00



32TCviii



24.



25.



26.



27a.



28.



29.



31.



30.



29.



31.



31.

NF 31 24c Blue on thin, crisp, translucent (pelure) paper in USED strip of 3 with portion of "American Bank Note Co. New-York" showing in top margin of centre stamp. Couple of shorter perfs on left stamp. Ex Clark collection.



32.



32A.



33.



34.



35.



36. NH



35.



35.



37.



38.



39.



40.

1880 to 1896



41.



42.



43.



44.



46.



47.



48.



49.



51.



52.



54.



55. NH



56.



57. NH.



58.



59.



75.



60.



76.



71.



42.



43-45 NH.



44. NH.



45.



49, 46



48.



49.



52.



55.



57, 56



58.



60.



Newfoundland

Newfoundland Dog

1887 - 1898

Engraved, No Watermark, Perf. 12 x 12

NF 56a 1/2c Deep Rose Red shade in left margin block of 24 (6x4).
Typical centring for this issue.
93954.0 G/P NH CS as P \$420.00 \$195.00



56a
Deep Rose Red
Block of 24

56a.

1897
Proofs



61P.



62P.



64P.



67P.



63P.



65P.



66P.



67P.



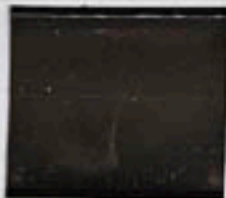
68P.



72P.



70P.



71P.



73P.



74P.



61.



62.



64.



69. NH



63. NH



65.



66.



67.



68.



72.



70.



71. NH



73. NH



74



61.



63. NH



62.



64. NH



68. NH.



65.



66. NH



67.



68.



69.



71.



72.

NH



73

NH



78P



79P



81P



83P



84P



85P



78.



79.



80.



81.



82.



83.



84.



85.



80b.



83c

NF 80b(?) 1c Green Queen Victoria horizontal pair IMPERFORATE at wide top & bottom margins. Thought to be "cut" from an IMPERFORATE HORIZONTALLY sheet. Only 50 proper "vertical" pairs thought to exist. Cute "sub-variety".

58775.0 F HHR 06

CS \$300.00 \$59.95



78.



80a.



81.



78.



79.



80.



80.



81.



82.



82.



83.



85.

Cx. Clark

Proof

or Specimen Overprint



86P.



86S.



86.



86. NH

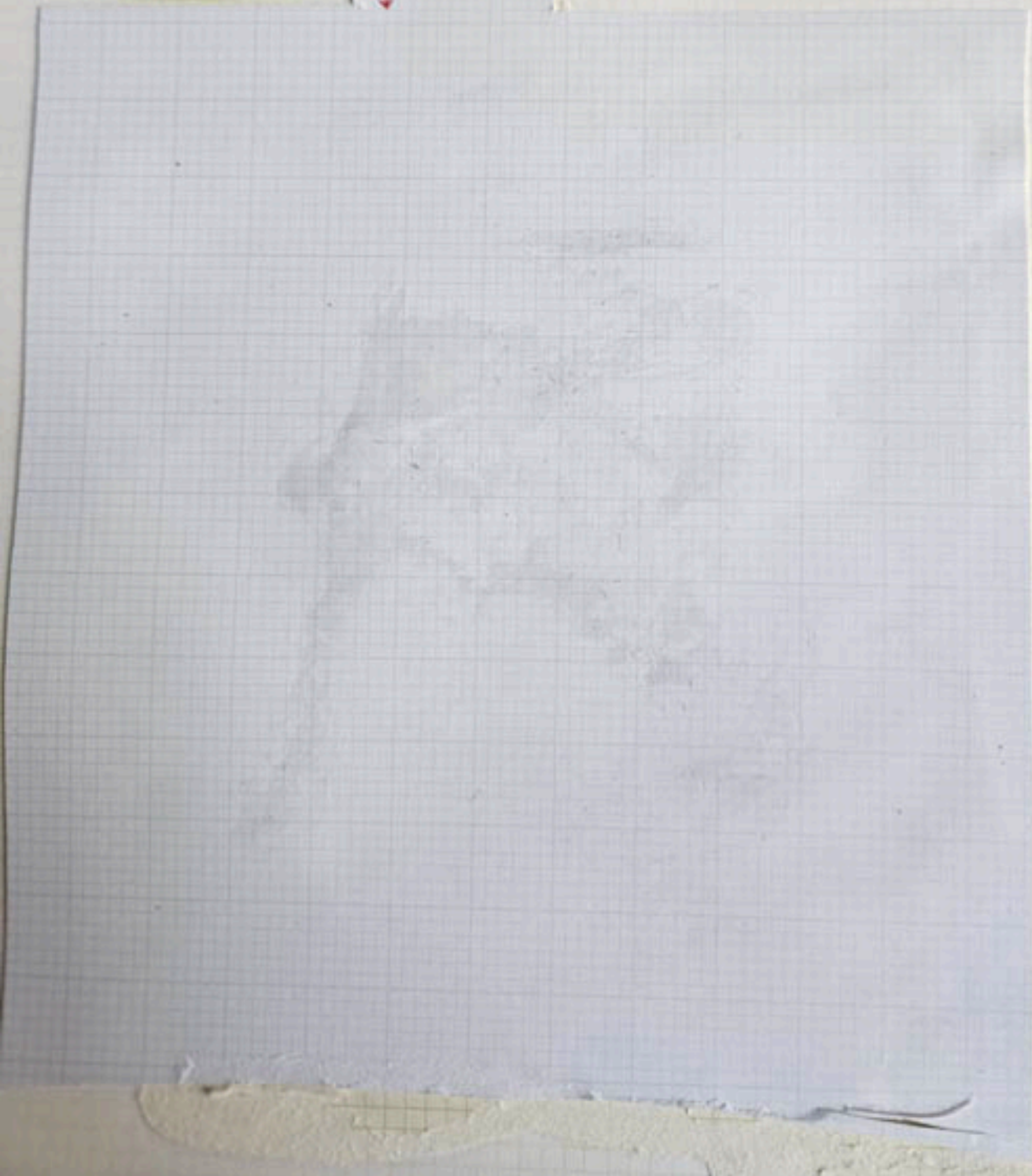


87b.



87b.

↓ Line in 0



104BP

105BP

106BP

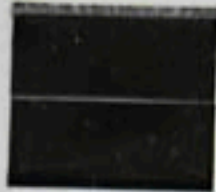


109BP

110BP

111BP

113BP



114BP



104.



105.



106.



107.



109.



109.



110.



111.



112.



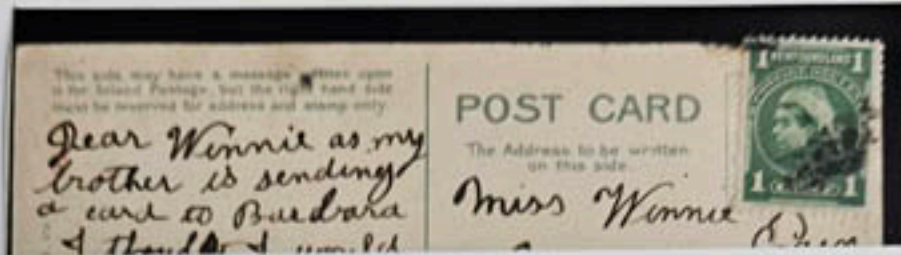
114.



113.



114A



1920 to 1924





NF 127 2c on 30c Slate Colony Seal "SHEET" of 25. Unissued sheets of 30c Cabot stamps (#72) were split into blocks of 25 for the 1920 surcharged issue. Some slight adhesion spots & few tone spots on gum side only. Priced as if LH..

80289.0 o/v F-VF 06 NH

CS over \$200.00 \$125.00

127.

N.H.



136.



134 N.H.



137 N.H.



138. N.H.



140. N.H.



140.



142. N.H.



141 N.H.



143.

1928



146.



145.



148.



147.



149.



150.



151.



153.



152.



154.



155.



158.



156.



157.



159.



160.



149, N.H.



150, N.H.



160.

B279B

835068

95-02006

12784 Newfoundland/Postal Issues, P 165var, Imperf PI Proof on Card, L Mgn Blk EF (SG #181var) (PH)...\$75

189c.

190a

194a

193a



208P

NF 208P 7c Duchess of York PLATE PROOF in colour of issue. UR corner sheet margin horizontal pair on yellowish unwatermarked, horizontal wove paper, (.0048"). ONLY 100 pairs thought to exist. SHOWPIECE PAIR. (XF single @ \$95.00)

80413.0 XF Ungummed

\$195.00

1933: Sir Humphrey Gilbert



212.



214.



216.



213.



215.



217.



218.



219.



220.



223.



221.



222.



224.



225.

1935



226.



227.



228.



229.



226.



227.



228.



229.



NF 254iv 2c Green IMPERF PLATE PROOF in left margin
 single showing "CUTTING GUIDE LINES & DOT",
 "demonitized" with printers 3.5mm punch hole. From
 WATERLOW & SONS Archives. Gum wrinkles as always.
 93115.1 VF OG

NF 255vi 3c Carmine IMPERF PLATE PROOF in left
 margin single showing "CUTTING GUIDE LINES & DOT",
 "demonitized" with printers 3.5mm punch hole. From
 WATERLOW & SONS Archives. Gum wrinkles as always.
 93115.2 VF OG



260
 Arrow Block



259.

Block: Cutting Guide Line



260.

Block: Cutting Guide Line

De + N 100

1919



c2.

1921

No Period →

← Period

Period →

← Period



83,032

A Combination Block from the Switt Collection

Top Left Stamp Without Period After "1921": This Block
I saw New Positions 1, 2, 6, and 9: Position 6 With Narrow Spacing
See certificate on the following page. Nicely centered block.



c3a. 118

No Period

1931



c6.



c7.



c8.



c9. 6



c10. 7



c11. 8

1932

Dornier



Flight

c12.

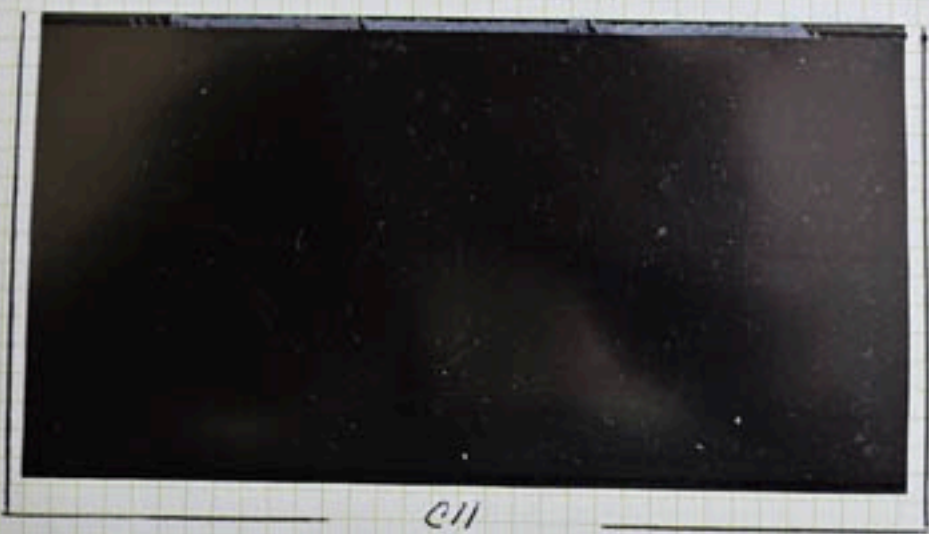
1931



24 C6



210 C7



C11



013.



014.



015.

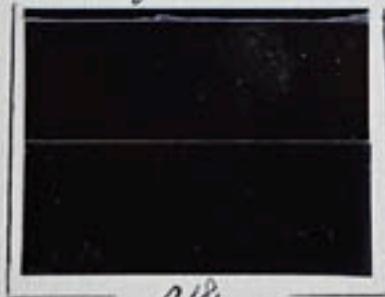


016.



017.

In light of Italo Balbo



018.

No. 018
8,000 stamps issued
8,040 printed
40 burned



019.

1932

Cinderella Aerial Service



Actually, this stamp is an essay! I have a copy used on cover with a 50 cent Blue Rose on a Balbo Flight Cover with many other stamps. It is with the 15¢ definitive stamps of 1928 in the Canadian collection. It is tied to the cover with a Canadian (collection) cancellation.

J. C. Johnston — 5/28/06
N.B. Well now, it's 8 years later, and I have discovered more about this strange Cinderella. Albert C. Rosseler, born in 1883, began operations as a stamps dealer in 1918. He was interested in postal history from the beginning of regular airmail flight in the United States. His interests spread to international air mail in the 1920's. In 1932, Rosseler issued this fifteen cent gem which I have mounted above and also have on a rare Balbo 1933 cover franked by many stamps including a fifty cent "Blue Rose".

This stamp was supposed to have been issued by the Newfoundland Aerial Service. Not much is ^{known} about Rosseler except that he operated out of East Orange, New Jersey and was active from 1918 to 1940 when he suddenly gave up the business. He never allowed himself to be photographed! His covers, Zeppelins and others are avidly collected. Albert C. Rosseler died early in 1952 at age 68.

See the Balbo cover in the 1928 definitive section of Canada in this B. M. C. Collection with the Aerial Service label. Hi Terry.

James C. Johnston Jr.
January 2, 2014

Woyzata Flight

This stamp was prepared for a first trans-Atlantic flight which never took place. It was designed and produced in the United States for the government of Newfoundland under a special contract. When the flight failed to take place, Newfoundland cancelled the contract and the stamps were not valid for postage. Some of the stamps found their way into the market and are noted by Scott. The number of stamps issued is 25,000. 1932



Note: See Charles Vargo's Article on the Woyzata Non-Flight which appeared in a December 2011 Issue of Kenn's
This is a scarcer block than generally is thought.

Newfoundland Post Office
Officially Sealed

1905



OXI NH

Edward VII

Plate Proof on India Paper

This Proof Is From

a Unique Sheet of 16.



POXIII

Edward VII

Only Sixteen of These Proofs Exist on India Paper: This May be the Best Known Example

... of its kind, condition-wise.

... the best of the 16 extant on this paper! Extra Paper...