

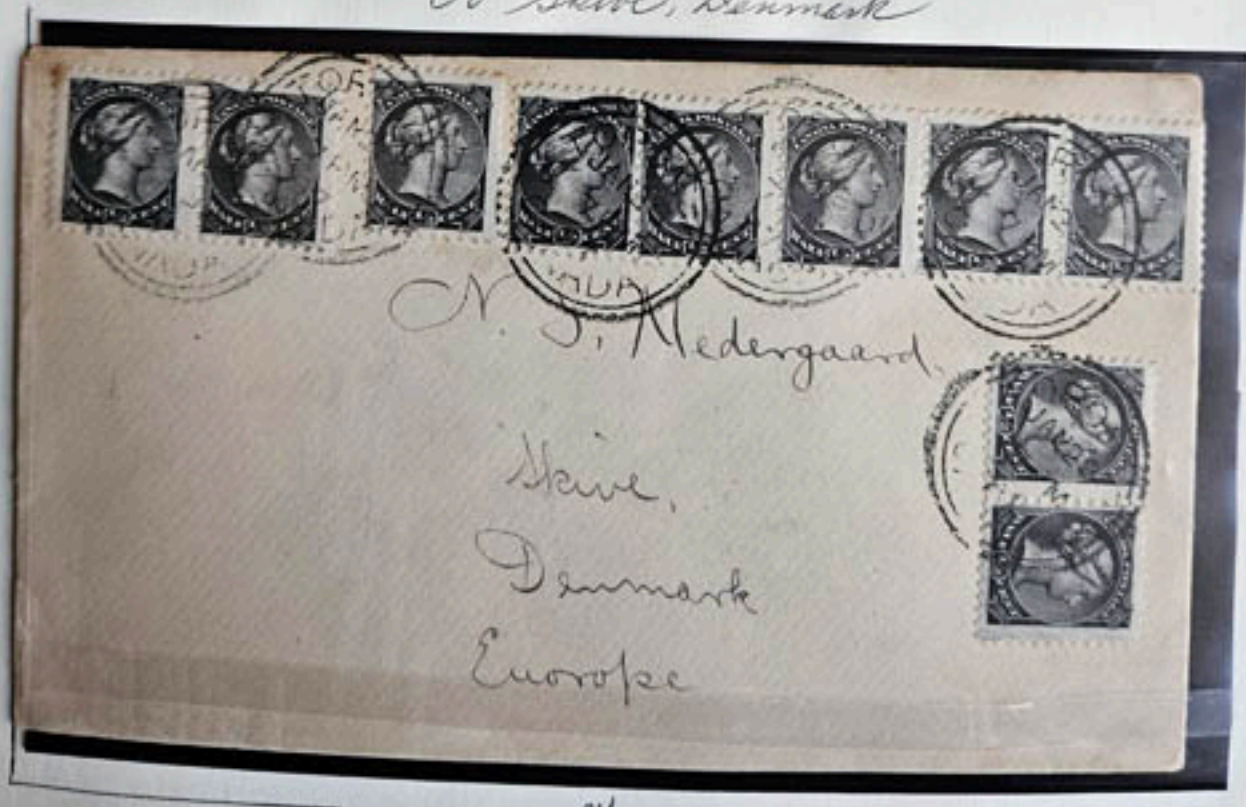
Over Seas Usages: *Scance*

To London, England



31.

To Skive, Denmark



31.

P. FREYSENG & CO.  
Manufacturers and  
Importers of  
CORKS, CAPSULES, Etc.  
Queen St. East. Cor. Sumach,  
TORONTO.



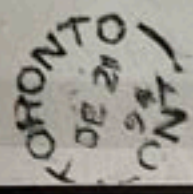
781

*Mr Otto Kopp*

Messrs. J. E. Doyle & Co.

P. O. Box 502,

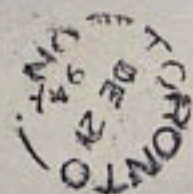
MONTREAL.



*508*

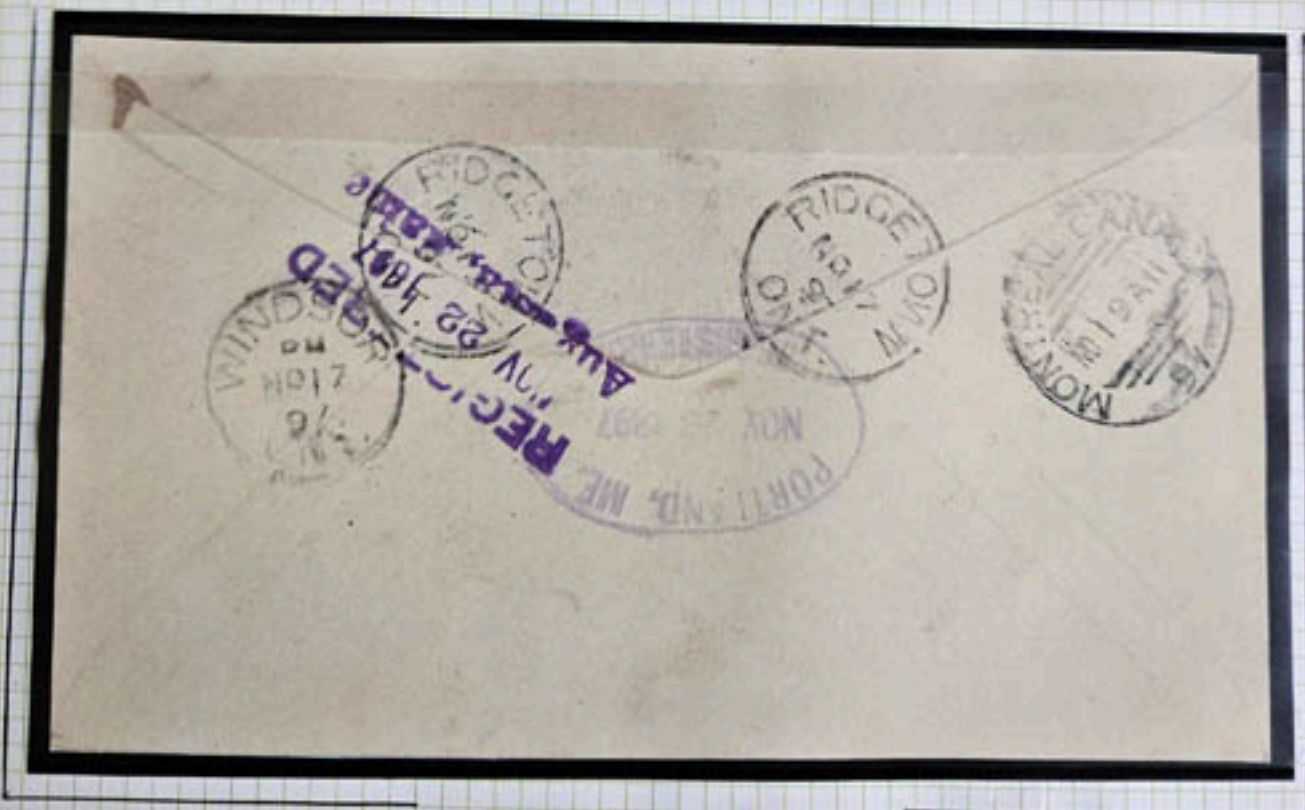
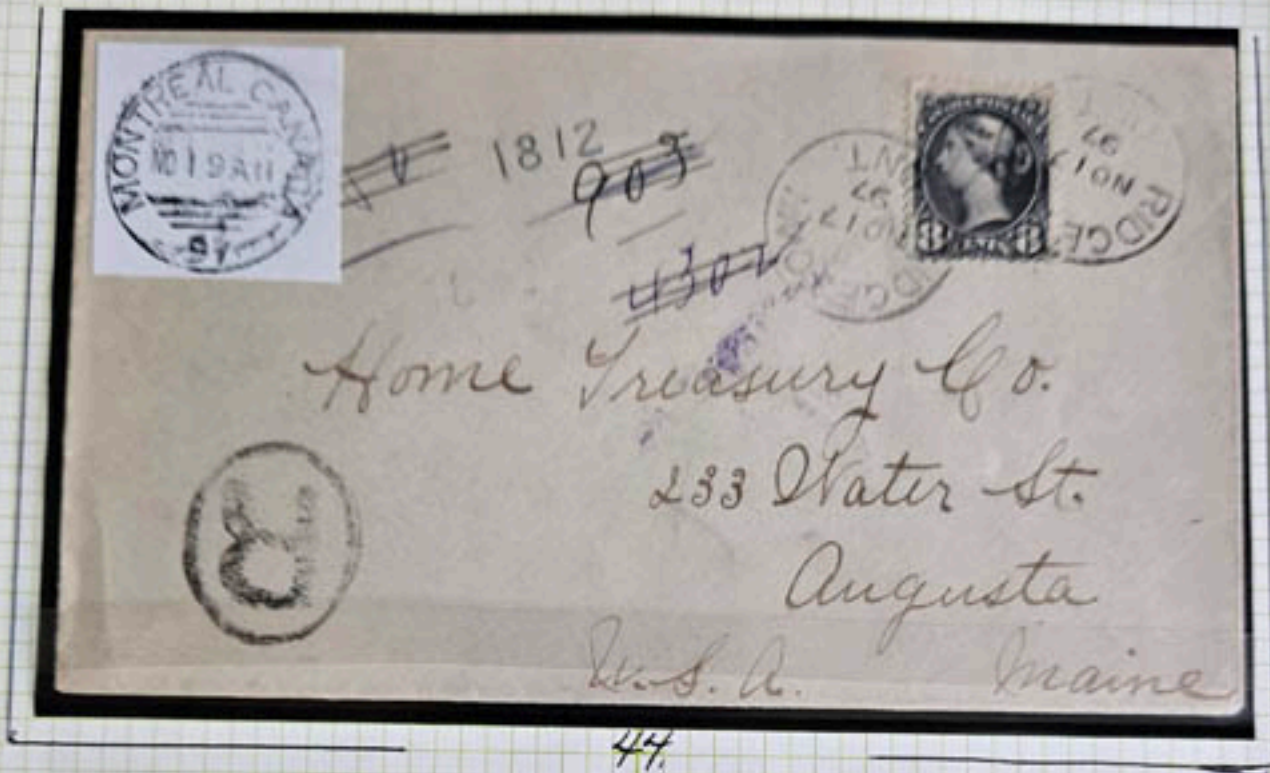
44.

*Registered Cover*



REVERSE

Registered Letter to Augusta, Maine 1897



No. 44 was issued to cover the postage and registration rate of eight cents.

IF NOT CALLED FOR IN TEN DAYS  
RETURN TO  
JOHN MACDONALD & CO.,  
TORONTO, CANADA.

253



Mr B. E. Cooper  
47 1/2 Government St  
Victoria  
B. E.

34.



34.

CANADA 34 1/2c Black, Small Queen in used strip of 5 with light  
"? ND 13/97" cds cancels.

Hamilton to Montreal: December 5, 1894



34x4, ENS.

Ge. Pickensy Collection

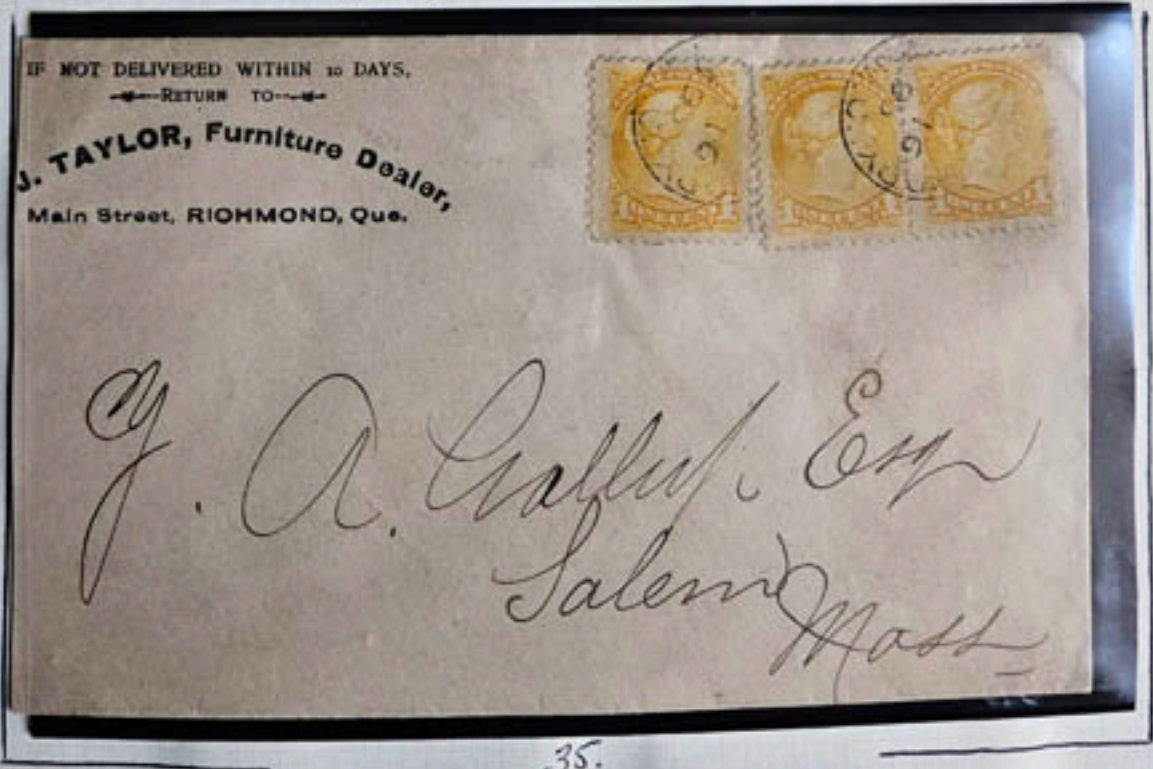
In this period of time, The Department of Crown  
Lands was of great importance. There was still

a great  
of open  
up for

deal  
land  
grabs.



Cover to Salem, Massachusetts From Quebec Prov. Can.



Affaires de l'Inde  
Bureau de l'Inde

Requiescit 1883

J. B. L.

Collector of Prov. Revenue.

Attavias Daville



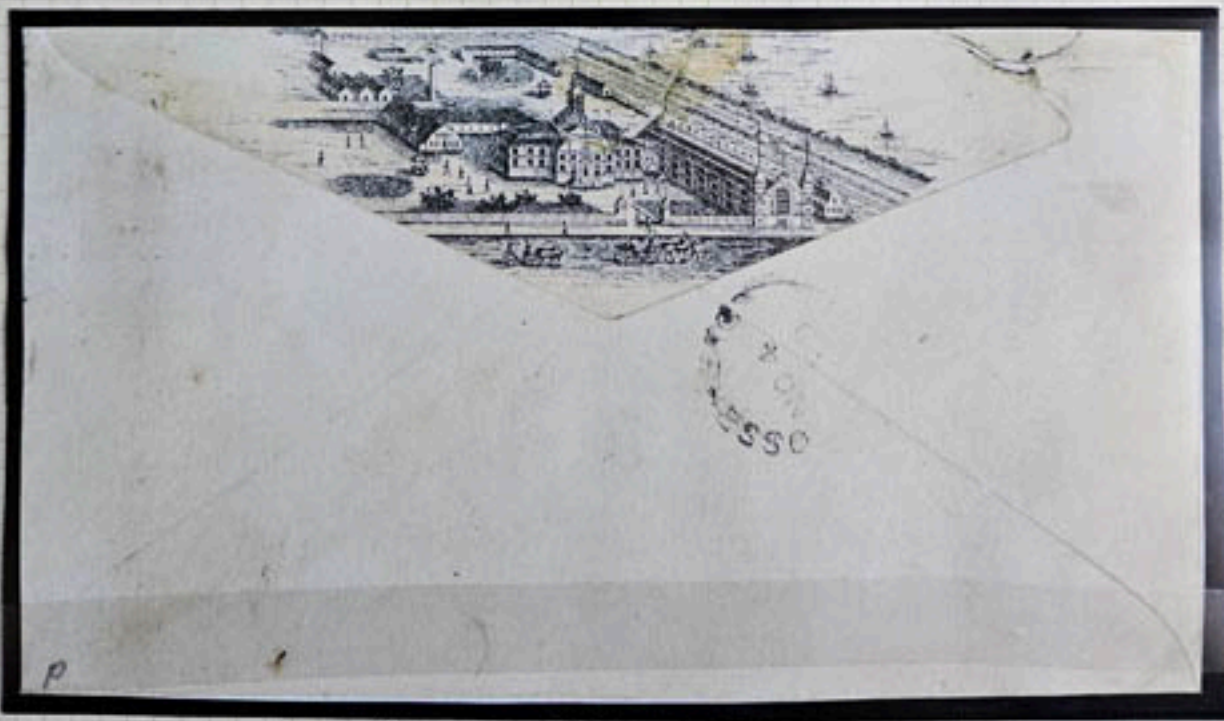
3/7

Handwritten red ink scribbles and markings.

The Harbor at St. Johns, New Brunswick: 1890 #  
Postmarked: November 4, 1890  
St. Johns, N. B.



41.



Reverse of Above Cover



1876

Hon J B Pardee  
Commissioner of Crown Lands



Department Toronto

(1876)

out

the Hon. J. B. Pardee, Commissioner of Crown Lands

Montreal, Canada: Nov. 2, 1893



0496

Messrs. HEIDELBACH, ICKELHEIMER & CO.,

BANKERS, 4805

NEW YORK.

A Cover From Toronto, Canada to Munich, Kingdom of Bavaria  
1891

IF NOT CALLED FOR IN TEN DAYS,  
RETURN TO

WHALEY, ROYCE & CO.

WHOLESALE IMPORTERS OF MUSICAL INSTRUMENTS,  
MUSIC, ETC.

TORONTO, CANADA.

Germany  
via New York



From Josephine Baehr  
Galleriestraße 15 I  
München

Erwin

Cover From Truro, Nova Scotia to Ogdensburg, N. Y.  
1887

