

Canadian National Exhibition in Toronto Sept. 8,
1914 By then World War I Had Been on a month

King Edward Hotel, Toronto, Canada.



CANADIAN NATIONAL
EXHIBITION
TORONTO
PEACE YEAR
AUG 23-1914-56



CO P
OF
FR M

Address Mrs. Stephen V. Laneski
24 Chestnut St
Augusta
Maine

106



FIRE PROOF
- American & European Plan

King Edward Hotel

Chateau Laurier
1922



104, 106



Reverse of Above Cover
Showing the Beautiful Hotel, The Chateau
Laurier

Singer Sewing Machine Company Inc.



Note Use of War Tax Stamp

Bicentennial of the End of the American Revolution 1783-1933

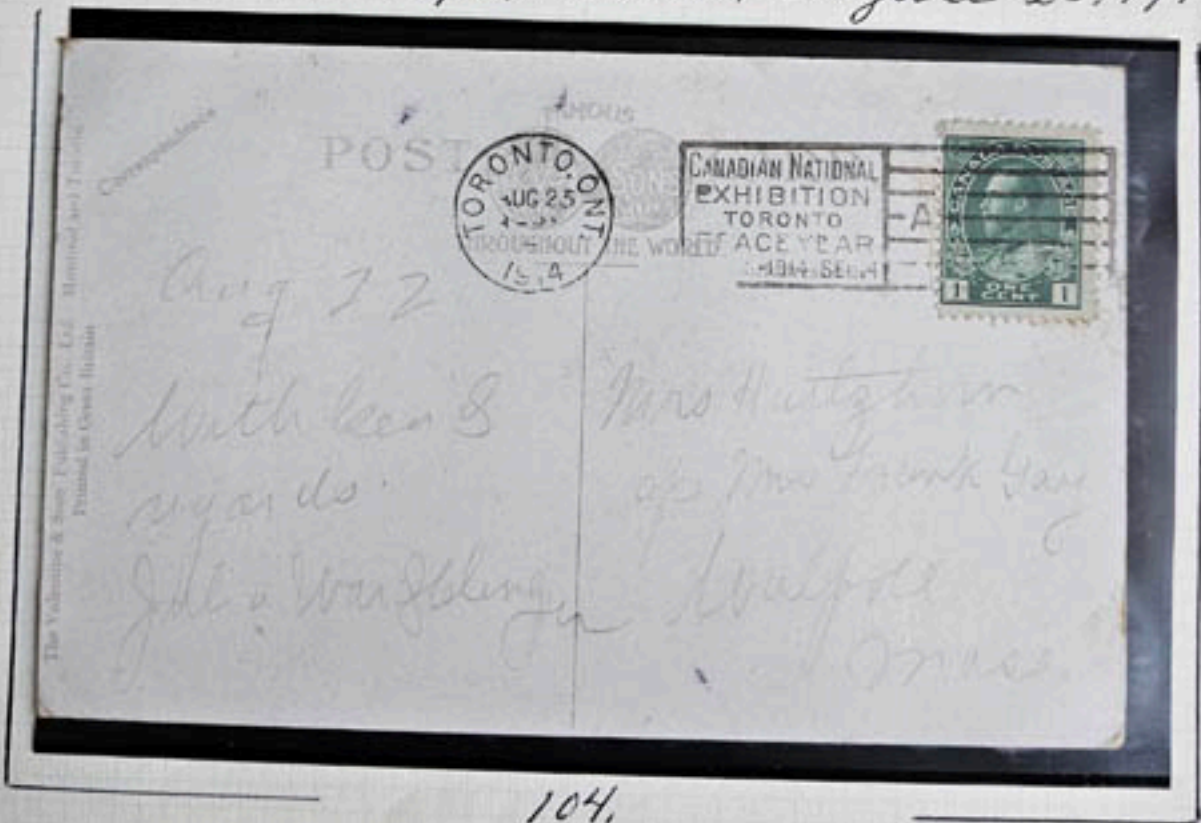


Quebec Exposition for all of Quebec Province, August 11, 1913



104,

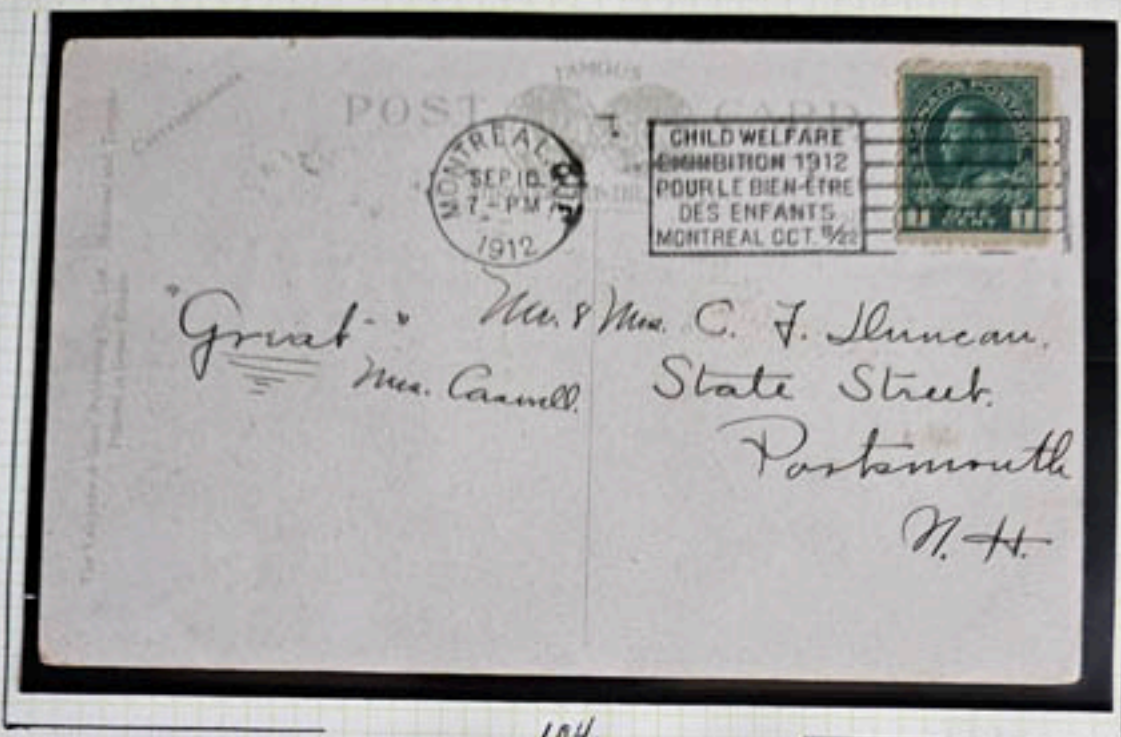
Canadian National Expo., Toronto, August 23, 1914 (H)



104,

Note the phrase "Peace Year." In less than a month, World War I was in full fury. It began on August 5, 1914 for England.

1912 Child Welfare Cancellation: Montreal



104.



Victoria Jubilee Bridge:
1897

Montreal to Kingston Flight Cover: August 24, 1928



105



106

August 8, 1915

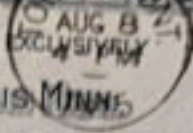
HIGHEST TYPE OF FIRE PROOF CONSTRUCTION



HOTEL DYCKMAN

EUROPEAN PLAN

MINNEAPOLIS, MINN.

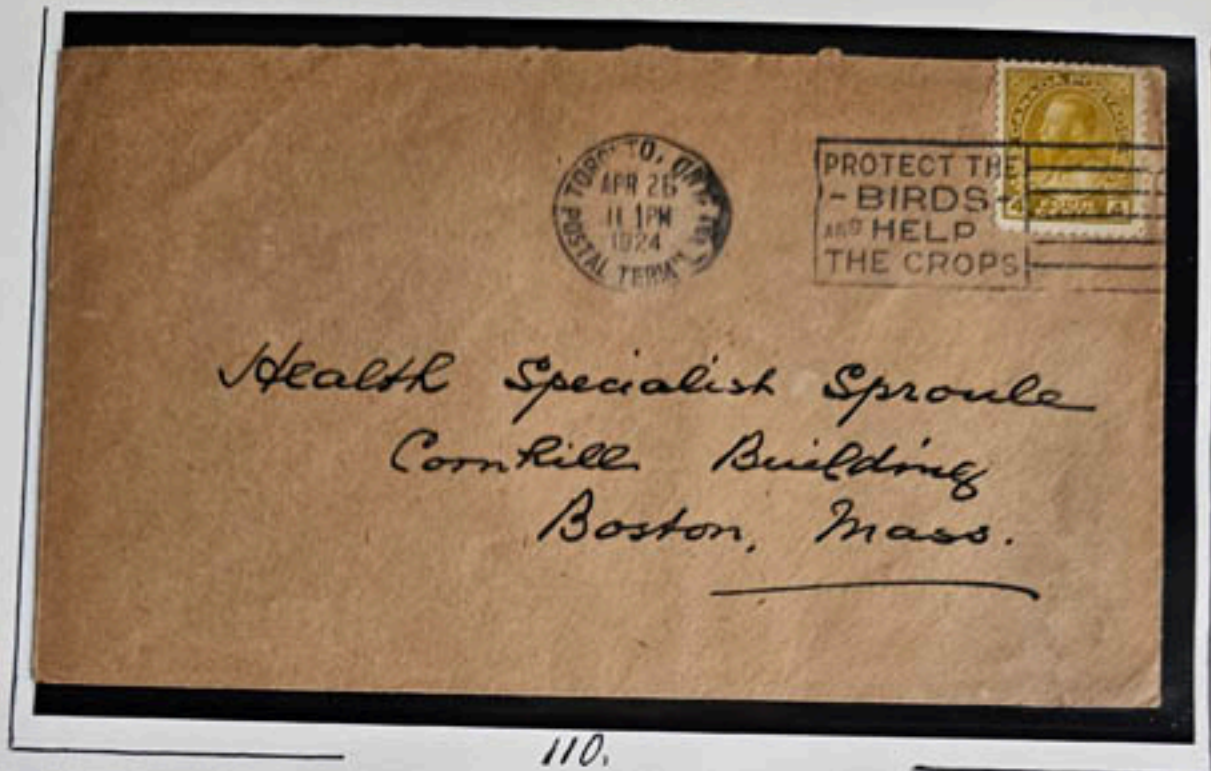


Mrs. Fannie E. Abbott
60 Pleasant St.
Dorchester,
Mass

(Boston)

104, 106

1924



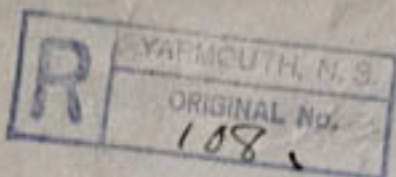
110.

Health Specialist Sproule was the man who tracked down "Typhoid Mary" and put her away until she died at 69 years of age in 1938. During her time as a cook in America, she infected more than fifty people in wealthy households in which she was employed. Several of them died as a result from the typhoid with which Typhoid Mary was infected. Mary herself never suffered from the disease.

J. C. Dolan 2000

Yarmouth, Nova Scotia to Hanover, Pa.

IN FIVE DAYS RETURN TO
L. E. RODNEY
BOX 802
YARMOUTH, N. S.



Mr. J. Emory Renoll
Hanover
Pa.



REVERSE OF ABOVE

Drummondville, Quebec, Canada to South Portland, Maine, U. S. A.

ELWIN H. BULLARD
DRUMMONDVILLE
QUEBEC

Mr. F. E. Wyman,
143 Ocean St.,
South Portland,
Maine.

CONTENTS
Postage Stamps for Collectors

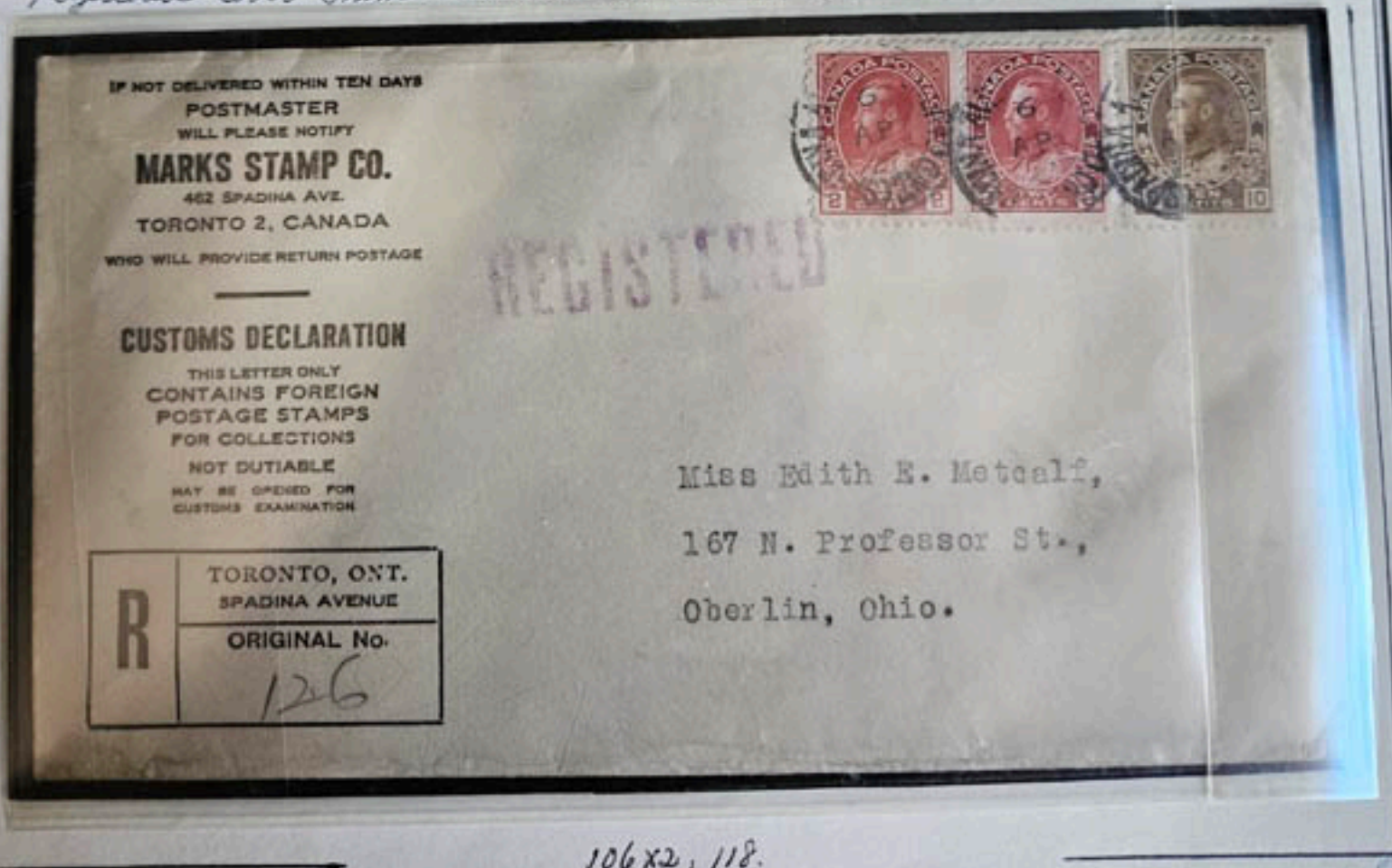


Registered Cover From Winnipeg to Beverly, Mass.



151, and 118.

Registered Cover From Toronto, Canada to Oberlin, Ohio, U.S.A.



106, x2, 118.