

HAWAIIAN ISLANDS



1899



OFFICIAL STAMPS

1896



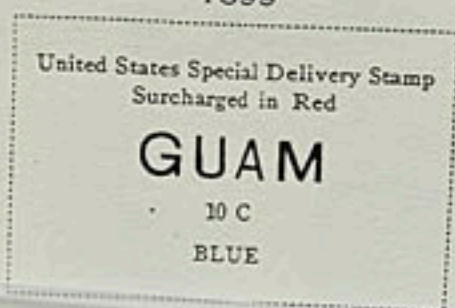
# GUAM

ENT—United States possession. AREA—225 square miles. POPULATION—13,916. CAPITAL—Agana.  
COIN—Same as in the United States.

Watermarked Double-lined U. S. P. S.  
1899

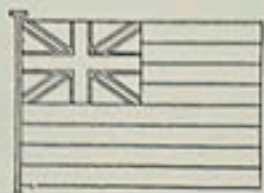


SPECIAL DELIVERY STAMP  
Watermarked Double-lined U. S. P. S.  
1899



# HAWAIIAN ISLANDS

(Sandwich Islands)



Kamehameha III



Kamehameha IV



Kalakaua



GOVERNMENT—Formerly a Kingdom, now a Territory of the United States, annexed August 12th, 1898. DIVISIONS—13 islands.

LAST QUEEN—Liliuokalani. AREA—6,449 square miles. POPULATION—191,909. CAPITAL—Honolulu, with 71,950 inhabitants.

STANDARD COIN—1 dollar=100 cents.

1851-52



1853



1855



1861



1859-65



2 C  
BLACK ON  
BLUE GRAY



2 C  
BLACK



2 C  
DARK BLUE  
ON BLUISH

# HAWAIIAN ISLANDS

1883-86



1890-91



Type of 1882  
5 C  
DARK BLUE

1893



Provisional  
GOVT.  
1893  
1 C  
BLUE



2 C  
DULL VIOLET



5 C  
ULTRAMARINE

6 C  
GREEN



10 C  
RED BROWN



6 C  
GREEN



12 C  
RED LILAC

15 C  
RED BROWN

18 C  
DULL ROSE

