

105

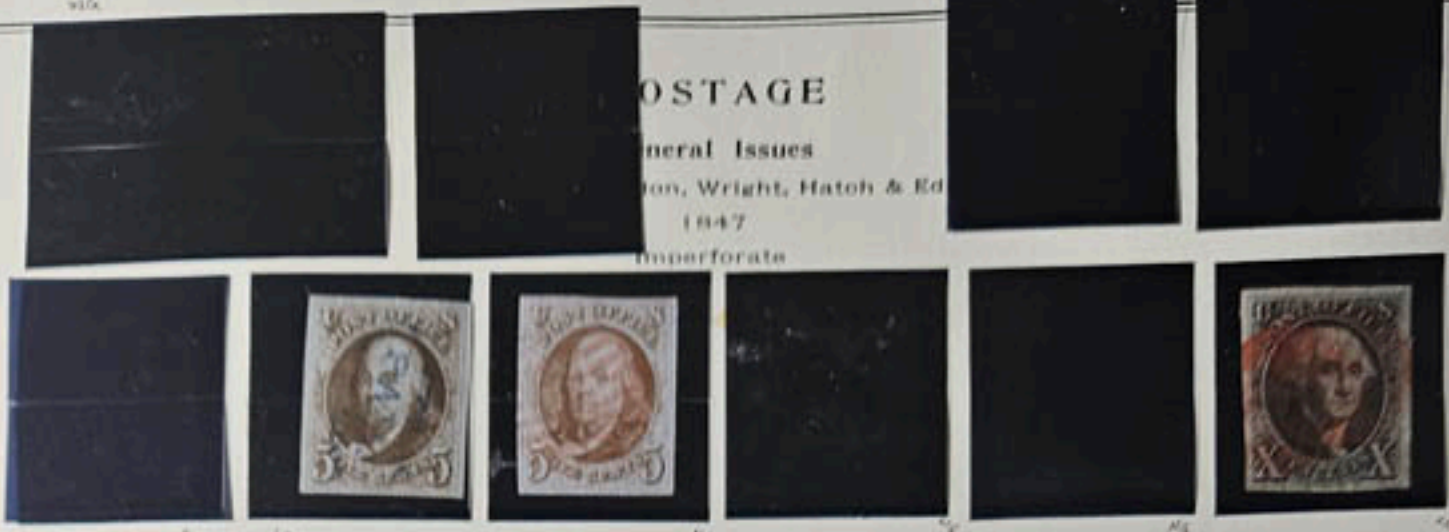
POSTAGE

General Issues

Wright, Hatch & Ed

1847

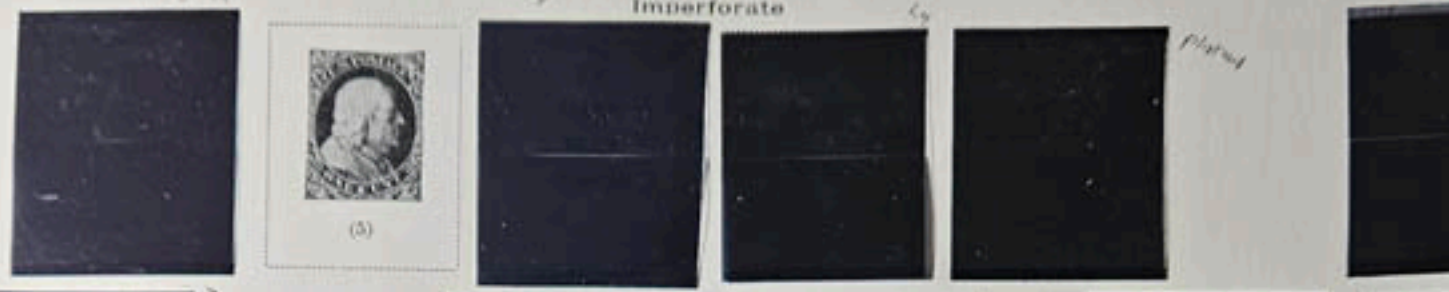
Imperforate



Printed by Toppin, Carpenter, Casilear & Co.

1851-56

Imperforate



(5)



(10)



106

107

108

109

110

111

112

113

114

115

116

117

118

119

120

121

122

123

POSTAGE

Provisional Issues by Postmasters

Alexandria

1840



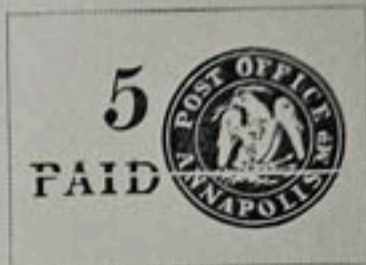
5 C
BLACK
ON BLUE

(1X2)

Annapolis

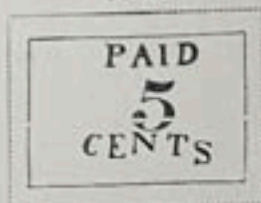
ENVELOPE

1840



Boscawen

1840



Brattleboro

1840



Lockport

1840



Millbury

1840



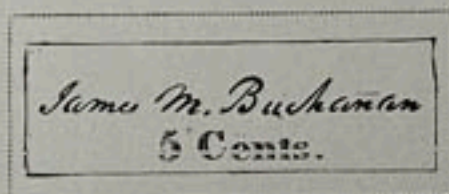
New York

1845



Baltimore

1840



10 C
BLACK

(3X2)

5 C
BLACK
ON BLUISH

(3X3)

10 C
BLACK
ON BLUISH

(3X4)

POSTAGE

General Issues

Wright, Hatch & Ed

1847

Imperforate



Printed by Toppin, Carpenter, Caslear & Co.

1851-56

Imperforate



(5)

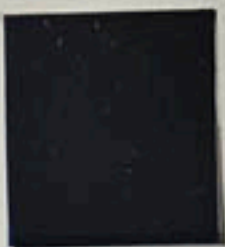


(Orange Brown)
(10)

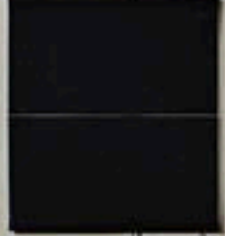


POSTAGE

Printed by Toppan, Carpenter & Co.
1857-60



Double front
1857-4



POSTAGE

Printed by the National Bank Note Co.
1861

First Issue
Perforated 12

Designs of Second Issue 1 C INDIGO (55)		5 C BROWN (57)	 (59)
---	--	----------------------	---

24 C VIOLET (60)	30 C RED-ORANGE (61)	90 C DULL BLUE (62)
------------------------	----------------------------	---------------------------

1861-62

Second Issue

1861-66

		SCARLET (74)			
		(78)			

			
--	--	--	---

POSTAGE

Issued by the National Bank Note Co.

1869

With Grill



Government Re-Issues and Special Printings

1875

Re-Issues of issue of 1869

Without Grill



1880

Special Printing of Issue of 1869

Soft Porous Paper
1 C
BUFF
Scott No. 133

POSTAGE

Printed by the National Bank Note Co.

1870-71

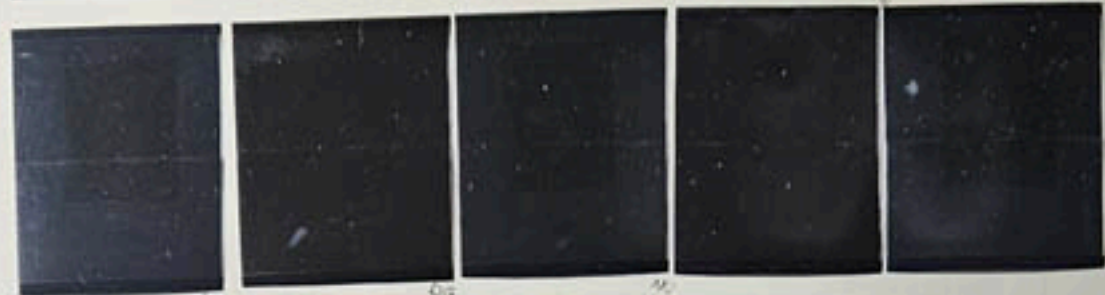
With Grill

105 1/4

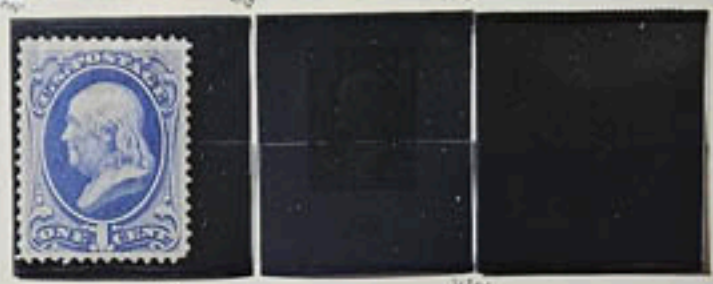
4 1/2

1/2

1/2



1/2
1/2
1/2
1/2
1/2



1 1/2

1/2

1870-71

Without Grill



1/2

1/2

1/2

1/2

1/2



1/2

1/2



1/2

1/2

1/2

1/2

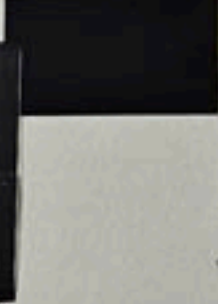
1/2

POSTAGE

Printed by the American Bank Note Co.

1879

Soft Porous Paper



1882

1881-82

Designs of Issue of 1873 Re-engraved



1883



POSTAGE

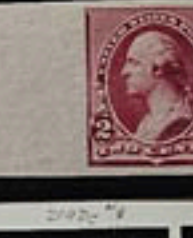
Printed by the American Bank Note Co.
1887



1888



1890-93





T
P
XP
1893



11
VCH

48

BOOKLET PANES



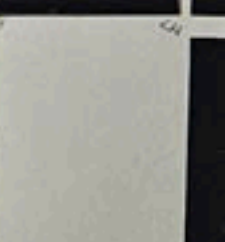
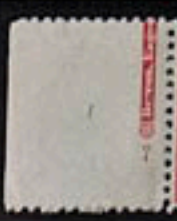
POSTAGE

Since 1894 all postage stamps except Nos. 909 to 921 have been Engraved and Printed by the Bureau of Engraving and Printing

1894



2 C
CARMINE
Triangle 1
(35)





POSTAGE

Unmarked USPS

1805



2C
PURPLE
(208)



279

1814

76

1898

460



277

— Bureau, Engraving & Printing —

POSTAGE

Trans-Mississippi Exposition Issue

Watermarked USPS

