

PUBLIC AUCTION #361

UNITED STATES, CANADA & WORLDWIDE
INCLUDING
COLLECTIONS & ACCUMULATIONS

JUNE 11-12, 2021



MATTHEW BENNETT INTERNATIONAL
www.bennettstamps.com

Session 1: United States

Friday, June 11, 2021, starting at 10:30 AM

United States

Postal History	1-16
1847 Issue	17-20
1851-1860 Issues	21-49
1861-1867 Issues	50-67
1869 Pictorial Issue.	68-77
1870-1888 Bank Note Co. Issues	78-95
1890-1898 Issues	96-121
1901-1907 Issues	122-131
1908-1920 Washington-Franklin & Commemorative Issues	132-165
1922-1956 Issues	166-191
1968-1997 Issues including Errors	192-205
Booklets	206-225
Airmail	226-235
Special Delivery and Registry	236-239
Postage Due	240-244
Offices in China and Officials.	245-251
Parcel Post and Newspaper Stamps	252-255
Carriers and Locals.	256-264
Postal Stationery	265-268
Revenue	269-291
Duck Stamps	292-295
Confederacy	296
U.S. Possessions.	297-332

Session 2: Foreign and Collections

Saturday, June 12, 2021, starting at 10:00 AM

British Commonwealth

Great Britain	333-343
Australia through British Guiana	344-357
Canada and Provinces	358-425
Cape of Good Hope through Trinidad & Tobago	426-482

Europe, Asia and Latin America

Bolivia through Israel	483-496
Italy	497-525
Korea through Vatican	526-543

Collections & Accumulations

U.S. Collections	544-553
U.S. Assortments.	554-573
U.S. Specialized Collections	574-585
U.S. Face Value Lots	586-596
Philippines	597
Foreign Country Collections	598-634

United States

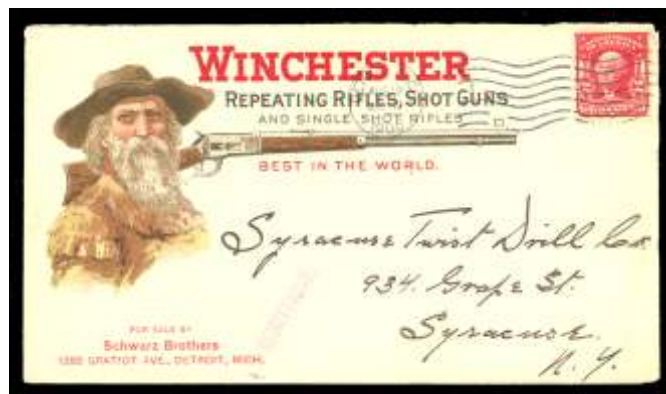
Postal History



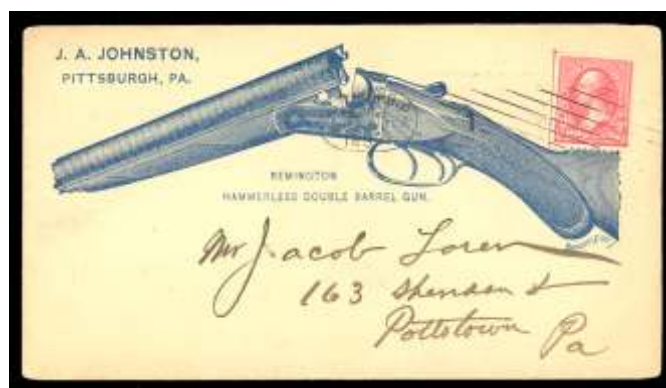
- 1 **"Marine Det. Am. Legation Peiping (Pekin) China"**. Multiple 3/20/33 duplex c.d.s.'s on 1c entire to Dept. of State, Washing D.C., manuscript "Peiping Pouch" at lower left, additionally franked with 1c-2c (617-18) and additional 2c (689), all F-VF, Very Fine cover, scarce usage (Photo). **Estimate \$400 - 500**



- 2 **"Way 26"**. Manuscript rate on f.l.s. with printed illustrated letterhead (Bank Draft) to Peace Dale, R.I., datelined New Orleans 12/1/43, blue Mobile, Ala. 12/4 c.d.s. file folds, still Very Fine cover (Photo). **Estimate \$200 - 300**



- 3 **"Winchester Repeating Rifles, Shot Guns and Single Shot Rifles"**. Multicolored illustrated advertising on cover to Syracuse, NY, 2c (319) tied by Detroit Mich. 8/19/06 machine cancel, trivial small edge tear, otherwise Very Fine cover (Photo). **Estimate \$150 - 200**



- 4 **"Hammerless Double Barrel Gun"**. Blue illustrated advertising with additional overall advertising on reverse, on cover to Pottstown, Pa., 2c (267), tied by Pittsburgh, Pa. machine cancel, Very Fine cover (Photo). **Estimate \$100 - 150**



- 5 **"Kirkwood House, Washington DC".** Identical embossed oval advertising corner cards, one blue other green, on covers addressed to James W. Denver, Lecompton, Kans. Territory, ea. franked by 3c (26), both tied by Washington, DC c.d.s.'s, Very Fine covers **(Photo)**.

Estimate \$100 - 150

"Jim" Denver was governor of Kansas during the lead up to the Civil War, and a representative from California. The city of Denver CO was named after him.



- 7 **"Brown's Patent Safety Money-Drawer".** Illustrated advertising letter sheet to NH, well struck Lowell, Ma. "Paid" c.d.s., mended backflap still Very Fine and attractive circular **(Photo)**.

Estimate \$100 - 150



- 6 **"Fire Proof Safe, Business, Office, Desk and House".** Lovely large illustrated broadside (see Illustrated Cover Catalogue # 347) with additional red addenda in left margin mentioning the great Boston fire of 1861, 1c blue (63) tied by neat cork cancel, Very Fine **(Photo)**.


Estimate \$200 - 300




- 8 **Ladies Ornate Valentine Cover.** Circa 1850's, bronzed 10-1/2 x 8-1/2 illustrated valentine used to Crosswicks, N.J., blue Philadelphia, Pa. 2/16 c.d.s., red octagonal "6" rate and matching "Paid" straight-line, couple edge tears/flaws and lacking backflap, still fresh and well preserved large sized cover **(Photo)**.

Estimate \$200 - 300




- 9  **New York, N.Y., 1846, 5¢ black on bluish, signed "ACM" connected (9X1).** Tight margins to barely touching, tied on outer f.l.s. to Reading, Pa. by manuscript cancel, faint red New York c.d.s. and matching arc "Paid", F-VF cover (Photo). **\$600**




- 10  **1¢ blue, type IIIa, Pos. 24L4 (8A).** Near four margins, tied on drop cover by attractive large Boston "Paid" grid, Boston Mass c.d.s., stamp show clear break at top and possible break at bottom, **Very Fine cover (Photo).** **\$825**




- 11  **3¢ orange brown, type I (10).** Pos. 95R1I showing shift in all four rosettes, clear margins to barely in across top, beautiful color centrally struck blue grid and matching Concord, NH 8/11/(51) c.d.s., overall illustrated advertising on reverse for insurance company (New England Mutual Fire Ins. Co.), with enclosure, **Very Fine cover (Photo).** **\$260**



- 12  **1869, 2¢ brown, bisected (113c).** Horizontal pair with right stamp bisected vertically to pay the 3c rate to Pa., Paxton 2/6/74 manuscript town at lower left, stamps with identical manuscript cancel, **Very Fine and extremely scarce cover (Photo).** **\$6,000**


Expertization: **with 2000 P.F. certificate.**




- 13  **1870, 15¢ bright orange (152).** Fresh and exceptionally well centered single, target cancel, not tied on 6¢ (Reay issue), legal sized registered entire, with matching target cancel, to Muncie Indiana, "Dayton Wash (territorial) Oct 4, 1873" c.d.s., ms "NO1" and "13916" ms "application for bounty of Dan Kimbrell Co. D 41st 2nd cavl", various edge tears and small repair, Fine (Photo).
Estimate \$150 - 200

Provenance: **Landau, with his write-up.**




- 15  **1994, 29¢ Legends of the West, re-called (2870).** Complete sheet tied on cover "North Salem MA Dec 17 1994" early usage, Very Fine, first cover we've seen. Unpriced used (Photo).
Estimate \$75 - 100



- 14  **1923, 1¢ green, rotary press sheet waste, perf 11 (544).** Very Fine for this issue, tied on illustrated advertising postcard to Salem, N.J. by Philadelphia, Pa. 8/26/23 advertising slogan machine cancel, a choice example of this rare coil waste on card (Photo).
\$5,500

Expertization: **with 1978, 2014 P.F. certificates.**



- 16  **Union Square Post Office, 1852, 1¢ black on light apple green (141L2).** Nearly four margins, uncanceled, used with a four margin 3¢ dull red (11A) tied by a partial Apr 4 New York c.d.s. on a locally addressed cover. Fine (Photo).
Estimate \$100 - 150

Expertization: **with 2001 P.F. certificate.**

1847 Issue



- 17 ▲ **1847, 5¢ red brown (1).** Tied on piece with light red grid cancel leaving variety fully visible, ample to large margins, close at upper right. Fresh F.-V.F (Photo). **\$400**



- 18 ▲ **1847, 10¢ black (2).** Tied on piece with red "St Louis" town postmarks, large margins three sides, just into frame line at bottom, rich color. F.-V.F (Photo). **\$750**



- 19 ★ **1847 (1875 Reproduction), 5¢ red brown (3).** Without gum as issued, ample margins, brilliant color, trivial offset on reverse, mentioned only for accuracy, fresh and Very Fine (Photo). **\$900**



- 20 ★ **1847 (1875 Reproduction), 10¢ black (4).** Without gum as issued, large even margins, fresh and choice Very Fine (Photo). **\$1,150**

1851-1860 Issues



- 21 ○ **1851, 1¢ blue, type III (8).** Margins to in at upper left, wide breaks at top and bottom, rich color, F.-V.F (Photo). **\$1,500**



- 22 ○ **1851, 1¢ blue, type IIIa (8A).** Wide break at top, gorgeous color, face-free postmarks, Fine (Photo). **\$750**



- 23 ○ **1852, 1¢ blue, type IV (9).** Large margins with a bit of adjacent stamp at top, rich color for a plate 1 late stamp, nicely complimented by a blue town postmark, fresh and choice Extremely Fine. SMQ \$200 (Photo). **\$100**

Expertization: **with 2013 P.F. certificate graded XF 90.**



- 24 ○ **1855, 10¢ green, type IV (16).** Recut at bottom, margins essentially all around, light town postmark, trivial margin nick, otherwise F.-V.F (Photo). **\$1,700**



- 25 ★ **1851, 12¢ gray black (17).** Original gum, margins to just barely into frame line, intense color, sharp impression, absolutely trivial microscopic corner tip crease lower right, choice F.-V.F. appearance **(Photo)**. **\$6,250**



- 26 ○ **1851, 12¢ gray black (17).** Balanced margins, crisp color with sharp impression, neat red cancel, Very Fine to Extremely Fine, a very pretty stamp. *SMQ \$325 without premium for the red cancel* **(Photo)**. **\$280**

Expertization: **with 2015 P.S.E. certificate graded VF-XF 85.**



- 27 ○ **1861, 1¢ blue, type I (18).** Attractive centering for this, neat grid cancels, F.-V.F **(Photo)**. **\$475**



- 28 ○ **1857, 1¢ blue, type IIIa (22).** Exceptionally well centered, allowing the type characteristics to be totally visible, especially the wide break at the top, excellent impression, rich plate 4 color, complimented by a dark blue town postmark, Extremely Fine, a handsome stamp. *SMQ \$900* **(Photo)**. **\$495**

Expertization: **with 2012 P.S.E. certificate graded VF-XF 85.**



- 29 ○ **1857, 1¢ blue, type IIIa (22).** Incredible rich plate 4 color, blue town postmark, fresh Fine, attractive **(Photo)**. **\$475**



- 30 ○ **1857, 1¢ blue, type IIIa (22).** From plate 4, relief "E", stunning color, sharp impression, light cancel, V.G **(Photo)**. **\$475**

Expertization: **with 2021 P.F. certificate.**



- 31 ○ **1857, 3¢ rose, type I (25).** Quite well centered, rich color, neat 1858 town postmark, choice Very Fine **(Photo)**. **\$190**



- 32 ○ **1857, 3¢ dull red, type IV (26A).** Excellent centering, allowing the type characteristics to be plainly visible, sharp impression, neat grid cancel, Very Fine to Extremely Fine. Scarce in higher grades. SMQ \$185 **(Photo)**. **\$150**

Expertization: **with 2005 P.F. certificate and 2005 P.S.E. certificate graded VF-XF 85.**



- 33 ○ **1858, 5¢ brick red, type I (27).** Striking rich color, red and black postmarks, reperfed, otherwise F.-V.F. and most attractive **(Photo)**. **\$1,700**



- 34 ○ **1857, 5¢ red brown, type I (28).** Excellent centering with margins clear all around, scarce thus, stunning color on bright paper, neat town cancel, Very Fine to Extremely Fine, a choice used single with great eye appeal. SMQ \$1,750 **(Photo)**. **\$1,100**

Expertization: **with 2015 P.S.E. certificate graded VF-XF 85.**



- 35 ○ **1857, 5¢ red brown, type I (28).** Well centered, rich color and sharp impression, trivial corner crease and thin speck, both unnoticeable, choice Very Fine appearance **(Photo)**. **\$1,050**



- 36 ○ **1859, 5¢ brown, type I (29).** Attractive centering for this closely spaced issue, lovely color, light cancel, Very Fine **(Photo)**. **\$350**



- 37 ○ **1861, 5¢ orange brown, type II (30).** Virtually perfectly centered, completely clear at top and bottom, rich color, sharp impression, pretty little red grid cancel, Extremely Fine. SMQ \$2,150 w/o premium for cancel **(Photo)**. **\$1,375**

Expertization: **with 2016 P.F. certificate graded VF-XF 85.**



- 38 ○ **1861, 5¢ orange brown, type II (30).** Very well centered for this very difficult issue, lovely color, with an attractive magenta grid cancel, Very Fine and most attractive **(Photo)**. **\$1,375**

Expertization: **with 2016 P.S.A.G. certificate graded VF 80.**



- 39 ★ **1860, 5¢ brown, type II (30A).** Original gum hinge remnants, fresh rich color, trivial tiny thin, Fine appearing example of this scarce mint stamp **(Photo)**. **\$2,250**



- 40 ○ **1860, 5¢ brown, type II (30A).** Beautifully centered, deep color and a detailed impression, well struck red grid cancel, Extremely Fine, a lovely stamp and a bit undergraded in our opinion. SMQ \$475 w/o premium for cancel **(Photo)**. **\$375**

Expertization: **with 2001 and 2016 P.F. certificates, the latter graded VF-XF 85.**



- 41 ○ **1857, 10¢ green, type II (32).** Beautifully centered within uncharacteristically large margins, excellent color, Very Fine gem **(Photo)**. **\$190**



- 42 ○ **1857, 10¢ green, type III (33).** Horizontal pair. N.Y. Ocean Mail cancel, attractive centering, bright color, Fine **(Photo)**. **\$400**



- 43 ○ **1857, 10¢ green, type IV (34).** Recut at bottom, rich color, neat town postmark, trifling flaws, Fine appearance **(Photo)**. **\$2,250**



- 44 ○ **1857, 12¢ black, plate I (36).** Attractive centering for this issue, blue town postmark, intense shade, F.-V.F **(Photo)**. **\$310**



- 45 ★ **1860, 24¢ gray lilac (37).** Part disturbed original gum, very well centered, bright deep color, small margin faults at left, otherwise Very Fine and most attractive for this usually off center and pale colored issue **(Photo)**. **\$1,450**



- 46 ○ **1860, 24¢ gray lilac (37).** Attractive centering, rich color with a striking red grid cancel, choice Very Fine single with excellent eye appeal **(Photo)**. **\$440**

Expertization: **with 1988 and 2015 P.F. certificates, the latter graded VF 80.**



- 47 ○ **1860, 24¢ gray lilac (37).** Nicely centered, fresh color, complimented by an attractive red grid cancel, handsome Very Fine **(Photo)**. **\$440**



- 48 ★ **1857-60 (1875 Reprint), 5¢ orange brown (42).** Without gum as issued, attractive centering for this, bright fresh color and paper, F.-V.F **(Photo)**. **\$1,200**

Expertization: **signed SP (Pinchot),.**



- 49 ★ **1857-60 (1875 Reprint), 30¢ yellow orange (46).** Without gum as issued, nicely centered for the 30¢, glowing color on brilliant paper, trifling notation on reverse, F.-V.F **(Photo)**. **\$3,000**

Expertization: **with 2003 P.F. certificate.**

1861-1867 Issues



- 50 P 1861 "First Design" Plate Proofs on India (55P3-62P3). Complete set, fresh colors, few thins as often on these fragile India Proofs, otherwise Very Fine (Photo). \$2,605



- 51 ★ 1861, 3¢ brown rose, First Design (56). Original gum, well centered, exceptionally fresh, reperfed at right, handsome F.-V.F. appearance (Photo). \$550



- 52 ○ 1861, 10¢ dark green, First Design (62B). Stunning deep color, bold grid and a bit of red cancels, reperfed, otherwise Fine (Photo). \$1,700



- 53 ★★ 1861, 3¢ pink (64). Four singles and a pair, all original gum **never hinged**, two with natural straight edge, lightly toned but good color, varying tendencies to curl just a bit, the pair has a couple negligible perf flaws but the bottom stamp and the two natural straight edge singles are Fine. Not priced never hinged. Single illustrated by itself (photo). \$84,000 as hinged

Expertization: **with 2021 P.F. certificate.**

As one might imagine, there has to be a story with this most unusual lot. The mint "pinks" were found in a 19th century desk drawer in the little box illustrated here. There they sat for 160 years until just being discovered now. We sent one of the two best singles for certification, and the certificate reads "genuine, never hinged, but lightly toned."



- 54 ▲ 1861, 3¢ rose (65). On small piece with 90% of a beautifully struck Lyre cancel of Canton Miss (Skinner and Eno PO-Lh3). Tiny perf faults upper right, Fine (Photo). Estimate \$75 - 100



- 55 P□ 1861, 3¢ lake, plate proof on India (66P3). Block of four. Stunning color, minor translucency in one, Very Fine, pretty block (Photo).
\$850



- 56 ○ 1861, 12¢ black (69). Beautifully centered, sharp impression, "star" cancel, Very Fine to Extremely Fine gem (Photo).
\$95



- 57 ○ 1861, 24¢ violet (70c). Well centered, beautiful rich color, blue duplex and red transit cancels, "small" corner crease is actually tiny and unnoticeable, few nibbed perfs not mentioned in cert, perf faults notwithstanding Very Fine appearing and a very colorful and pretty stamp (Photo).
\$2,290

Expertization: with 1994 P.F. certificate.



- 58 ○ 1861, 30¢ orange (71). Very well centered for the 30¢, Boston "Paid" and portion of red transit cancel, Very Fine (Photo).
\$230+



- 59 ○ 1861, 90¢ blue (72). Attractive centering within wide margins, tiny corner creases, F.-V.F. appearance (Photo).
\$600



- 60 (★)□ 1863, 2¢ black (73). Block of four. Unused, maybe a small part disturbed original gum, crisp color, Fine attractive block (Photo).
\$2,750 as original gum



- 61 ★ 1867, 15¢ black, E. grill (91). Large part original gum, average centering, rich color, few nibbed perfs at bottom, V.G.-Fine, exceedingly rare with original gum **(Photo)**. **\$12,500**

Expertization: with 2020 P.F. certificate.



- 65 ★ 1867, 15¢ black, F. grill (98). Part original gum, light soiling/toning, possibly a tiny thin but a collectible example of this rare mint stamp **(photo)**. **\$4,250**



- 62 P 1867, 3¢ red, F. grill, imperf proof on stamp paper (94P5). Horizontal pair. Most original gum, large margins, light gum soaks, Very Fine **(Photo)**. **\$1,500**



- 66 ○ 1867, 24¢ gray lilac, F. grill (99). Striking red quartered cork cancel, rich color, beautifully centered, though reperfed at top, tiny thin, choice, Extremely Fine appearance **(Photo)**. **\$1,700**



- 63 ○ 1867, 5¢ brown, F. grill (95). Quite well centered for the 5¢ grill, beautiful color, "(P)aid" cancel, F.-V.F., scarce this attractive and sound **(Photo)**. **\$875**



- 67 ★ 1867, 30¢ orange, F. grill (100). Large part original gum, attractive centering for the 30¢, bright rich color, Fine, rare in sound mint condition **(Photo)**. **\$9,000**

Expertization: with 2020 P.F. certificate.



- 64 ○ 1867, 12¢ black, F. grill, double transfer of top and bottom frame lines (97 var.). Well centered, black and a bit of red cancels, Very Fine **(Photo)**. **\$300**

1869 Pictorial Issue



- 68 ○ 1869, 6¢ ultramarine (115). Very well centered, rich color, Very Fine (Photo). \$200



- 69 ○ 1869, 12¢ green (117). Well centered, deep color, black and red cancels, Very Fine (Photo). \$150



- 70 ○ 1869, 15¢ brown & blue, type I (118). Nicely centered, good colors, light cancel, trifle offset on reverse (from address?), fresh Very Fine (Photo). \$825



- 71 ○ 1869, 24¢ green & violet (120). Virtually perfectly centered within near jumbo balanced margins, fresh colors, neat quartered cork cancel, Extremely Fine. SMQ \$950 (Photo). \$600

Expertization: with 1983, 2003 P.F. certificates and 2014 P.S.E. certificate graded VF-XF 85.

Provenance: Vernon Morris.



- 72 ○ 1869, 30¢ ultramarine & carmine (121). Beautifully centered within wide margins, bright colors, light cancel, couple nibbed perfs, fresh Very Fine (Photo). \$375



- 73 (★) 1869, 90¢ carmine & black (122). Unused without gum, quite well centered, handsome rich colors, Very Fine example of this iconic and rare unused stamp (Photo). \$4,000

Expertization: with 1982 P.F. certificate, 2003 P.S.E. certificate.



- 74 ○ 1869, 90¢ carmine & black (122). Beautifully centered within large margins, bright color, faint unobtrusive cancel, Extremely Fine, a most handsome example of the popular 90¢ 1869, and given its positive attributes, is a bit undergraded in our opinion (Photo). \$1,800

Expertization: with 2013 P.S.E. certificate graded VF 80.



- 75 ○ **1869 (1875 Re-issue), 6¢ blue (126).** Well centered, rich color, light unobtrusive cancel, reperfed at right (not mentioned in earlier cert), choice Very Fine appearance **(Photo)**.
\$3,000

Expertization: with 2019 P.S.E. certificate, clear 1985 P.F. certificate.



- 76 ○ **1869 (1875 Re-issue), 10¢ yellow (127).** Excellent centering, bold New York double oval Registry postmark, Extremely Fine. SMQ \$4,000 **(Photo)**.
\$1,800

A CHOICE EXAMPLE OF THIS SCARCE GENUINELY USED REISSUE.

Expertization: with 1962, 2014 P.F. certificates, the latter graded VF-XF 85.



- 77 ○ **1869 (1875 Re-issue), 30¢ ultramarine & carmine (131).** Quite well centered, rich colors, lightly cancelled, Very Fine, a lovely example of this very scarce used re-issue **(Photo)**. \$2,750

Expertization: with 2014 P.S.E. certificate.

1870-1888 Bank Note Co. Issues



- 78 ○ **1870, 1¢ ultramarine, H. grill, N.B.N.C. printing (134).** Well centered, black cork cancel, Very Fine, though the P.S.E. certificate states "I" grill, we are offering this as an "H" grill **(Photo)**.
\$350

Expertization: with 2009 P.F. certificate as "H" grill and 2010 P.S.E. certificate as an "I" grill, graded VF 80.



- 79 ○ **1870, 1¢ ultramarine, H. grill, N.B.N.C. printing (134).** Excellent centering, pretty shade with a blue cancel, Extremely Fine. SMQ \$250 w/o premium for cancel **(Photo)**. \$225

Expertization: with 1998 P.F. certificate and 2006 P.S.E. certificate graded VF-XF 85.



- 80 (★) **1870, 6¢ carmine, H. grill, N.B.N.C. printing (137).** Unused without gum, excellent centering, bright fresh color, numerous grill points, Very Fine to Extremely Fine, quite scarce in this choice unused condition (Photo). **\$1,750**

Expertization: **with 1968 P.F. certificate and 1990 P.S.E. certificate.**



- 81 ○ **1870, 24¢ purple, H. grill, N.B.N.C. printing (142).** Outstanding centering, fresh bright pastel shade characteristic of the genuine examples, light cancel, Very Fine (Photo). **\$6,500**

A TRULY STELLAR EXAMPLE OF THE RARE 24¢ NATIONAL GRILLED. IT IS A PLEASURE TO SEE A CHOICE EXAMPLE COLLECTED DURING THE EARLIER DAYS, THIS STAMP WAS SUBMITTED TO THE PHILATELIC FOUNDATION IN 1957 BY GEORGE SLOANE AND SIGNED BY HIM.

Expertization: **signed Sloane, with 1957 and 2020 P.F. certificates, the latter graded VF 80.**



- 82 ○ **1870, 24¢ purple, H. grill, N.B.N.C. printing (142).** Beautifully centered for this, good color for this characteristically pale stamp, plenty of visible grill points, Very Fine (Photo). **\$6,500**

Expertization: **with 2021 P.F. certificate.**



- 83 ○ **1870, 90¢ carmine, H. grill, N.B.N.C. printing (144).** Beautifully centered, though deceptively reperfed at right, excellent color, light cancel, choice Extremely Fine appearance (Photo). **\$2,250**

Expertization: **with 2021 P.F. certificate.**



- 84 ○ **1870, 3¢ green, I. grill, N.B.N.C. printing (136A).** Strong grill, virtually perfectly centered, fresh color, Extremely Fine, choice stamp. SMQ \$425 (Photo). **\$90**

Expertization: **with 2014 P.S.E. certificate graded XF 90.**



- 85 ○ 1871, 7¢ vermillion, N.B.N.C. printing (149). Wonderfully well centered, rich color, neat red target cancel, Extremely Fine, a choice stamp with true eye appeal (Photo). \$110

Expertization: with 2015 P.S.E. certificate.



- 88 ○ 1870, 30¢ black, N.B.N.C. printing (154). Well centered, rich color complimented by a red cork cancel, Very Fine and most attractive (Photo). \$325

Expertization: with 1998, 2015 P.F. certificates.



- 86 ○ 1870, 12¢ dull violet, N.B.N.C. printing (151). Outstanding centering, bright color, light unobtrusive cork cancel, an Extremely Fine used gem. SMQ \$500 (Photo). \$200

Expertization: with 2010 PSE certificate graded XF 90.



- 89 ○ 1873, 12¢ blackish violet, C.B.N.C. printing (162). Well centered within startlingly large margins, intense color, neat quartered cork cancel, Very Fine, a wonderful used jumbo. SMQ \$150 (Photo). \$135

Expertization: with 2009 P.S.E. certificate graded VF 80J.



- 87 ○ 1870, 15¢ bright orange, N.B.N.C. printing (152). Beautifully centered, rich color, black cork cancel, slightly rounded corner perf lower left, Very Fine (Photo). \$210

Expertization: with clear 2009 P.S.E. certificate graded VF 80 and 2017 P.S.A.G. certificate.



- 90 ○ 1873, 90¢ rose carmine, C.B.N.C. printing (166). Perfectly centered within wide margins, bright color, nice "5" in oval cancel, Extremely Fine (Photo). \$300

Expertization: with 2000, 2014 P.F. certificates and 1993 P.S.E. certificate.



- 91 ★★ 1879, 2¢ vermillion, A.B.N.C. printing (183). Original gum never hinged, bright color, tiny natural inclusion, Fine (Photo). \$370



- 92 (★) 1879, 10¢ brown, A.B.N.C. printing, without secret mark (187). Unused without gum, fresh crisp color, trivial tiny and invisible crease, choice Fine appearance (Photo). \$1,000



- 93 ○ 1882, 6¢ rose (208). Perfectly centered within wide balanced margins, bright fresh color, quartered cork cancel, an Extremely Fine jumbo. SMQ \$425 (Photo). \$110

Expertization: with 2020 P.S.A.G. certificate graded XF 90J.



- 94 ○ 1882, 10¢ black brown (209b). Gorgeous color, crisp impression, very well centered and a light cancel, choice Very Fine gem, quite a scarce shade, especially this choice. SMQ \$475 (Photo). \$375

Expertization: with 2021 P.F. certificate graded VF-XF 85.



- 95 ○ 1882, 10¢ black brown (209b). Choice color, fancy "U.S. Mail" cancel, minor thin, handsome F.-V.F. appearance (Photo). \$375

1890-1898 Issues



- 96 ★□ 1890, 2¢ carmine, cap on left “2” variety (220a). Block of nine. Original gum hinge remnant, **bottom left pair never hinged**, some hinge reinforcement, rough perfs at right, top right stamp corner fault, otherwise F.-V.F., scarce multiple (Photo). **\$1,900 + as singles**



- 97 ★ 1890, 2¢ carmine, cap on both “2’s” variety (220c). Original gum lightly hinged, fresh rich color, F.-V.F (Photo). **\$650**



- 98 ★ 1890, 90¢ orange (229). Original gum very lightly hinged, stunning color, couple unpunched perfs at top, Fine (Photo). **\$450**



- 99 ○ 1893, 30¢ Columbian (239). Very well centered, beautiful color, neat double oval cancel, Very Fine to Extremely Fine, an unusually handsome used example of the 30¢. SMQ \$150 (Photo). **\$90**

Expertization: with 2010 P.S.E. certificate graded VF-XF 85.



- 100 ○ 1893, \$1 Columbian (241). Excellent centering, rich color with beautifully struck World's Fair Station duplex cancel (Cat. value on cover \$4,500), Extremely Fine and most eye catching. SMQ \$775 w/o premium for cancel (Photo). **\$525 without cancel premium**

Expertization: with 2013 P.S.E. certificate graded VF-XF 85.



- 101 ★ 1893, \$2 Columbian (242). Original gum possibly never hinged but a bit of gum loss at top, rich fresh color, Fine, pretty stamp (Photo). **\$1,050**



- 102 ○ 1893, **Columbian**, \$2 brown red (242). Well centered, neat double oval cancel, reperfed, choice Very Fine appearance (Photo). \$525



- 103 ★ 1893, **\$3 Columbian** (243). Original gum, bright color, trifling marginal flaws, completely unnoticeable, Fine appearance (Photo). \$1,400



- 104 ★ 1893, **\$4 Columbian** (244). Original gum, brilliant color, nicely centered, trivial light crease, choice F.-V.F. appearance (Photo). \$2,000



- 105 ★ 1893, **\$5 Columbian** (245). Original gum hinge remnant, nicely centered, prooflike color and impression, light crease, F.-V.F. appearance (Photo). \$2,300



- 106 ★★ 1894, **1¢ blue**, unwatermarked (247). Original gum never hinged (trifling natural gum skip), well centered within wide margins, pristine color and paper, Very Fine (Photo). \$180



- 107 ★★ 1894, **8¢ violet brown**, unwatermarked (257). Original gum never hinged, very well centered, rich color, Very Fine to Extremely Fine (Photo). \$475

Expertization: with 1998 P.F. certificate.

Provenance: Zoellner.



- 108 ★ 1894, **\$1 black**, type I, unwatermarked (261). Original gum hinge remnant a bit heavy, bright intense color, Fine (Photo). \$1,000



- 109 ○ 1894, \$1 black, type II, unwatermarked (261A). Attractive centering, light cancel, fresh F.-V.F. SMQ \$400 (Photo). \$800

Expertization: with 2005, 2012 P.S.E. certificates, the latter graded F 70.



- 110 ★ 1895, 10¢ dark green, D.L. watermark (273). Original gum, perfectly centered with wide balanced margins, prooflike color and impression, Extremely Fine, a stunning mint jumbo. SSV \$385 for a normal 95 without a premium for "J" and the highest grade awarded by the PF (Photo). \$95

Expertization: with 2021 P.F. certificate graded XF-SUP 95J.



- 111 ★ 1895, 50¢ orange, D.L. watermark (275). Original gum hinge remnant, stunning color, well centered, tiny thin, handsome F.-V.F (Photo). \$240



- 112 ★ 1895, \$1 black, type I, D.L. watermark (276). Original gum hinge remnants a bit heavy, fresh F.-V.F (Photo). \$600



- 113 ○ 1895, \$1 black, type II, D.L. watermark (276A). Well centered, intense shade on bright paper, light cancel, Very Fine to Extremely Fine. SMQ \$325 (Photo). \$200

Expertization: with 2013 P.F. certificate graded VF-XF 85.



- 114 ★ 1895, \$2 bright blue, D.L. watermark (277). Original gum, very well centered, rich color, trifling thin speck, choice Very Fine appearance (Photo). \$900



- 115 ○ 1895, \$2 dark blue, D.L. watermark (277a). Outstanding centering, bright and deep shade, neat cancel, Extremely Fine, a choice stamp. SMQ \$600 (Photo). \$400

Expertization: with 2000, 2015 P.F. certificates, the latter graded VF-XF 85.



- 116 P 1895, \$5 dark green, imperf proof on stamp paper (278P5, formerly 278a). Horizontal pair, original gum, large, beautifully balanced margins, with deep rich color, Extremely Fine. Only 100 issued (Photo). **\$3,250**

A CHOICE EXAMPLE OF THIS RARE IMPERFORATE PAIR.

Expertization: with 2000 P.F. certificate.



- 117 ★ 1898, 50c Trans-Miss. (291). Disturbed original gum, attractive centering, bright fresh color, tiny thin speck, F.-V.F. appearance (Photo). **\$600**



- 118 ★ 1898, \$1 Trans-Miss. (292). Original gum small hinge remnant, attractive centering, fresh color, F.-V.F (Photo). **\$1,500**



- 119 ★ 1898, \$1 Trans-Miss. (292). Lightly disturbed original gum hinge remnant, intense color on bright paper, absolutely trivial thin speck, otherwise Fine (Photo). **\$1,500**



- 120 ★ 1898, \$2 Trans-Miss. (293). Original gum small hinge remnant, well centered, fresh rich color, Very Fine (Photo). **\$1,900**



- 121 ★ 1898, \$2 Trans-Miss. (293). Top plate no. 613 single, original gum, rich color, several perfs, hinge reinforced, Fine (Photo). **\$1,900**

1901-1907 Issues



- 122 ★★ 1901, 1¢ Pan-American (294). Top imprint and plate numbers and split arrow block of eight. Original gum never hinged, beautifully centered, brilliant color, natural printing crease in selva and right pair, Extremely Fine (Photo). \$580



- 123 ★□ 1901, 2¢ Pan-American (295). Top imprint and plate no. 1122 block of six. Original gum lightly hinged on one stamp only, exceedingly well centered, bright color, few perf separations, Extremely Fine, handsome plate block (Photo). \$325



- 124 BK★ 1903, 1¢ blue green, booklet pane of 6 (300b). Position E, original gum, quite well centered, fresh Very Fine (Photo). \$600



- 125 ★ 1903, 15¢ olive green (309). Original gum, very well centered, deep color, Very Fine (Photo). \$185



- 126 ★ 1903, \$2 dark blue (312). Original gum hinge remnant, attractive centering, rich color, bright paper, F.-V.F (Photo). \$825



- 127 ★ 1903, \$5 dark green (313). Original gum hinge remnant (pencil notations on reverse), bright color, quite nicely centered, tiny corner crease, natural inclusion, neither detract, Very Fine appearance (Photo). \$2,100



- 128 ★★ 1908, 5¢ blue, imperf (315). Original gum never hinged, large beautifully balanced margins, deep color, Extremely Fine (Photo). \$575



- 129 BK★ 1903, 2¢ carmine, type I, booklet pane of 6 (319g). Three different positions— C, E, G, original gum, bright fresh colors (shades), position G minor thin in one, otherwise F.-V.F (Photo). \$375+



- 130 ★ 1907, 1¢ Jamestown (328). Top imprint and plate no. 3545 block of six. Original gum, stamps never hinged, quite well centered for this, bright color, Very Fine (Photo). \$550



- 131 ★ 1907, 5¢ Jamestown (330). Top imprint and plate no. 3560 and arrow block of six. Original gum, bright color, one small strip of hinge reinforcement, V.G.-Fine (Photo). \$3,000

1908-1920 Washington-Franklin & Commemorative Issues



- 132 ★ □ 1908-1922 1¢-2¢ printing varieties (331, 499, 554). Pair of first, blocks of the others. Each with natural offset, impression in sheet margin, Fine and eye catching (Photo).
Estimate \$100 - 150



- 133 ★ 1909, 50¢ violet, D.L. watermark (341). Original gum hinge remnant, very well centered, glowing color, Very Fine (Photo). \$275



- 134 ★ 1909, \$1 violet brown, D.L. watermark (342). Original gum hinge remnant (gum bend), attractive centering, bright color, trivial tiny thin, F.-V.F. appearance (Photo). \$450



- 135 ○ 1908, 1¢ green, D.L. watermark, vertical coil (348). Guide line pair. Beautifully centered, light neat postmark, small internal crease, absolutely invisible front and back (just flashes when drying), choice Extremely Fine appearing example of this scarce used line pair (Photo). \$800

Expertization: with 1991, 2019 P.F. certificates.



- 136 ★ 1908-1910 coils, 1¢//5¢ (350-355). Original gum old time hinge remnants, nicely centered, bright fresh colors, 2¢ light thin, otherwise F.-V.F (Photo). \$880

Expertization: all backstamped Sloane.



- 137 ★□ 1909, 2¢ carmine, bluish paper (358). Left side Imprint, star and plate no. 4996 plate block of six. Top pair original gum, others never hinged, rich color, top right stamp with inclusion, barely shows to front, F.-V.F (Photo).
\$1,650



- 139 ★□ 1909, 2¢ Lincoln, bluish paper (369). Wide margin left imprint and plate no. 4979 block of six. Original gum, single small hinge remnant in selvage, otherwise completely never hinged, attractive centering, lovely color, F.-V.F (Photo).
\$2,750

Expertization: signed on reverse of selvage S. Pinchot with ID notation,.



- 138 ★★□ 1909, 2¢ Lincoln, bluish paper (369). Large top margin block of six. Original gum never hinged, rich color, F.-V.F (Photo).
\$1,800
as never hinged



- 140 ★★□ 1909, 2¢ Alaska-Yukon (370). Wide top imprint and plate no. 5145 block of six. Original gum never hinged, very lightly hinged in un-gummed portion of selvage, bright color, very well centered, Very Fine, choice (Photo).
\$200



- 141 ★ 1910-11, Washington-Franklin, 1¢ to 13¢ complete (374-382). Original gum hinge remnant, 2¢ and 6¢ never hinged, bright and fresh colors, Fine (Photo). \$578



- 142 ○ 1910, 1¢ green, horizontal coil (392). Used guide line pair, well centered, exceptionally fresh with neat machine cancel, Very Fine and choice (Photo). \$500

Expertization: with 2002 P.F. certificate.



- 143 ★ 1913, 1¢ Panama-Pacific, perf 12 (397). Top plate no. 6127 block of six. Original gum, single lightly hinged in selvage, otherwise never hinged, brilliant color, F.-V.F (Photo). \$300



- 144 ★□ 1913, 2¢ Panama-Pacific, perf 12 (398). Wide margin right plate no. 6307 block of six. Original gum hinge remnant on two only, otherwise never hinged, well centered, fresh Very Fine (Photo). \$400



- 145 ★ 1915, 10¢ Panama-Pacific, perf 10 (404). Original gum hinge remnant, blazing rich color, Fine (Photo). \$675



- 146 ★ 1912, 2¢ carmine, S.L. watermark, horizontal coil (413). Pair, original gum very lightly hinged, perfect centering, brilliant color, choice Extremely Fine (Photo). \$125



- 147 ★ 1912, \$1 violet brown, D.L. watermark, perf 12 (423). Plate no. 5782 single. Original gum (disturbed and lightly toned), wide margins, Very Fine (Photo). \$475



- 148 ★ 1913-1915 issue 1¢-11¢, less 7¢ (424-429, 431-434). Original gum several hinge remnant, quite well centered, fresh colors, Very Fine (Photo). \$260



- 149 ○ 1914, 3¢ violet, S.L. watermark, horizontal flat plate coil (445). Beautifully centered, rich color, neat wavy line cancel, Extremely Fine. SMQ \$500 (Photo). \$250

Expertization: with 2021 P.F. certificate graded XF 90.



- 150 ★★ 1915, 2¢ red, type II, S.L. watermark, horizontal rotary press coil (454). Original gum never hinged, perfectly centered, post office fresh, simply Superb (Photo). \$160

Expertization: with 1996 P.F. certificate for pair.



- 151 ★ 1916, 3¢ violet, S.L. watermark, horizontal rotary press coil (456). Original gum hinge remnant, bright color, excellent centering, Extremely Fine (Photo). \$225



- 152 ★★ 1914, 2¢ carmine, S.L. watermark, imperf horizontal coil (459). Original gum never hinged, large margins, fresh Very Fine (Photo). \$300



- 153 ★ 1916-1917 3¢//12¢ (464//474). Six different, original gum 12¢ hinge remnant others lightly hinged, quite well centered, fresh Very Fine (Photo). \$317



- 154 ★ 1916, 5¢ carmine color error, unwatermarked, perf 10 (467). Original gum hinge remnant (tiny spot of gum missing), near perfect centering, bright color, Extremely Fine (Photo). \$325



- 155 ★ 1917, 50¢ light violet, unwatermarked, perf 10 (477). Part original gum (disturbed), rich color, fresh and Fine (Photo). \$850



- 156 ★ 1916, \$1 violet black, unwatermarked, perf 10 (478). Original gum (trifle heavy gum crease), fresh deep color, F.-V.F (Photo). \$600



- 157 ★□ 1917, 5¢ blue, unwatermarked, perf 11 (504). Bottom plate no. 8487 block of six. Original gum lightly hinged, well centered, beautiful rich color, Very Fine, choice (Photo). \$140



- 158 ★ 1918, \$2 orange red & black (523). Original gum light hinge remnant, fresh and Fine (Photo). \$525



- 159 ★★□ 1918, 3¢ purple, Offset, type IV, double impression (530a). Lower left corner margin block of six, three with entire design doubled, three with partial doubling. Original gum never hinged, Fine, much more obviously and dramatic than normally encountered (Photo). Estimate \$200 - 300



- 160 ★□ 1918, 2¢ carmine, type VI, offset printing, imperf (534A). Bottom plate no. 11654 block of six, with "ghost number". Original gum very lightly hinged on two, dry print speck on one, natural gum wrinkles upper right stamp, tiny corner fault (fragile), otherwise Very Fine (Photo). \$400



- 161 ★★ 1919, 3¢ Victory (537). Top plate no. 9429 block of six. Original gum never hinged (natural gum skips), pretty shade, fresh F.-V.F (Photo). \$350



- 162 ★□ 1919, 3¢ Victory (537). Wide bottom plate no. 9414 block of six. Original gum, well centered, fresh and crisp, Very Fine (Photo). \$260



- 163 ★ 1919, 3¢ Victory, deep red violet shade (537a). Original gum, rich true color, Fine (Photo). \$1,250



- 164 ★★ 1920, 5¢ Pilgrim (550). Top plate no. 12427 block of six. Original gum never hinged (usual natural gum bends and skips), intense color, fresh and Fine (Photo). \$675



- 165 ★ 1920, 5¢ Pilgrim (550). Bottom plate no. 12426 block of six. Original gum very lightly hinged, strong color, F.-V.F (Photo). \$425

1922-1956 Issues



- 166 ★★ 1922, ½¢-30¢ (551//570). Ten different, including 560, 567-569, original gum never hinged, fresh, well centered, overall Very Fine (Photo). \$269



- 167 ★ 1923, 4¢ Martha Washington (556). Bottom plate no. 15219 block of six. Original gum lightly hinged, exceptional centering, Very Fine (Photo). \$250



- 168 ★★ 1922, 6¢ Garfield (558). Original gum never hinged, essentially perfectly centered, an Extremely Fine gem. SMQ \$120 (Photo). \$65

Expertization: with 2020 P.F. certificate graded XF 90.



- 169 ★ 1923, 8¢ Grant (560). Wide bottom plate no. 15264 block of six. Original gum lightly hinged, gum tone on reverse of two, tiny hinge reinforcement at very bottom of selvage, fresh F.-V.F (Photo). \$575



- 170 ★★ 1923, 12¢ Grover Cleveland (564). Original gum never hinged, perfectly centered within wide margins, post office fresh color and paper, Superb. SMQ \$285 (Photo). \$10

Expertization: with 2020 P.F. certificate graded SUP 98.



- 171 ★★ 1922, 15¢ Statue of Liberty (566). Full top plate no. 17431 block of six. Original gum never hinged, natural pre-printing crease, fresh F.-V.F (Photo). \$400



- 172 ★ 1923, 20¢ Golden Gate (567). Bottom plate no. 19134 block of six. Original gum lightly hinged, fresh and Fine (Photo). \$275



- 173 ★★ 1923, \$2 U.S. Capitol (572). Bottom plate no. 14306 block of six. Original gum never hinged, bright color and paper, slight perf strengthening at bottom of selvage, F.-V.F (Photo).

\$1,000



- 174 ○ 1923, 1¢ Franklin, rotary press coil waste, perf 11 x 10 (578). Outstanding centering for this difficult coil waste issue, bright color, light cancel, an Extremely Fine gem. SMQ \$275 (Photo). \$160

Expertization: with 2021 P.F. certificate graded XF 90.



- 175 ★★ 1923-26, Rotary press definitives, perf 10, 1¢ to 10¢ complete (581-591). Original gum never hinged, nicely centered, bright colors, 6¢ tiny natural inclusion, F.-V.F (Photo). \$176



- 176 BK★★ 1924, 2¢ Washington, rotary press printing, booklet pane of 6 (583a). Original gum never hinged, far better centered than usual for this difficult pane, with wide margins, rich color, crisp, Very Fine (Photo). \$200



- 177 ★ 1923, 2¢ Washington, rotary press coil waste (595). Sheet margin at top (light pencil), original gum hinge remnant, rather well centered for this, exceptionally fresh, F.-V.F (Photo). \$240



- 178 ★ 1923, 2¢ Harding, rotary press printing (612). Lower right plate no. 14939 block of four. Original gum very lightly hinged if at all, excellent centering, light pre-print fold, Very Fine (Photo). \$300



- 179 ★★□ 1924, 5¢ Huguenot-Walloon (616). Right plate no. 15752 block of six. Original gum never hinged, well centered, fresh and Very Fine (Photo). \$375



- 180 ★★ 1925, 2¢ Norse-American (620). Top plate no. 16688 and 16958 and arrow block of eight. Original gum never hinged, fresh F.-V.F (Photo). \$275



- 181 ★ 1925, 5¢ Norse-American (621). Wide margin top plate nos. 16929/16925 and arrow block of eight. Original gum, six stamps never hinged, small hinge reinforcement, fresh Very Fine (Photo). \$450



- 182 ★★ 1925, 17¢ Wilson (623). Full left plate no. 18021 block of six. Original gum never hinged, intense color, excellent centering, Very Fine, choice (Photo). \$325



- 184 ★ 1926, White Plains souvenir sheet (630). Dot in "S" variety (lower left plate no. 18774), original gum hinge remnant at top, otherwise never hinged, nicely centered, fresh light pencil note "DOT", some perf separations, F.-V.F (Photo). \$350



- 183 ★★ 1926, White Plains souvenir sheet (630). Original gum never hinged, fresh, well centered, Very Fine (Photo). \$500



- 185 ★□ 1928, Hawaii complete (647-648). Plate block of four of each. Original gum, each with single hinge remnant, otherwise never hinged, fresh and crisp, F.-V.F., nice set (Photo). \$310



- 186 ★★ 1928, 5¢ Hawaii (648). Upper left plate no. 18907 block of six. Original gum never hinged, beautifully centered, fresh Extremely Fine, choice plate block (Photo). \$375



- 187 ★★ 1931, 50¢ Arlington Amphitheater, rotary press printing (701). Upper right plate no. 20544 block of four. Original gum never hinged, bright shade, Very Fine (Photo). \$230
- 188 ★★ 1934, 3¢ Byrd Antarctic souvenir sheet (735). 150 sheets. Without gum as issued, appears to be Very Fine throughout (there are 5 extra sheets to allow for a minor fault). \$1,500



- 189 ★★ 1938, \$5 Coolidge (834). Top plate no. 22167, 22169 block of four. Original gum never hinged, gum adherence at very top of selvage, outstanding centering, Extremely Fine (Photo). \$325



- 190 ★□ 1938, \$5 Coolidge (834). Top plate nos. 22166, 22168 and arrow block of four. Original gum lightly hinged on 2 others never hinged, fresh Very Fine (Photo). \$325 as never hinged



- 191 ★★ 1956, \$5 Hamilton (1053). Upper right plate no. 25367 block of four. Original gum never hinged, choice centering, Extremely Fine (Photo). **\$210**

1968-1997 Issues including Errors



- 192 ★★ 1968, 6c Waterfowl Conservation, vertical pair, imperf between (1362a). Original gum never hinged, Extremely Fine. Only 100+ pairs issued (Photo). **\$250**



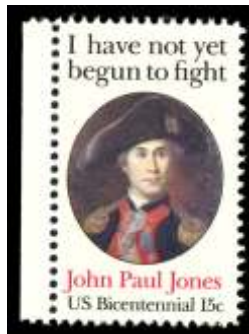
- 193 ★★ 1973, 10c Crossed Flags coil, imperf (1519a). 10 pairs (some in strips). Original gum never hinged, Very Fine (Photo). **\$350**



- 194 ★★ 1974, 10c Energy Conservation, blue & orange omitted (1547a). Original gum never hinged, Very Fine. Only about 100 issued (Photo). **\$400**
- 195 ★★ 1976 50 State Flags (1633-1682). Post office pack (unsealed) of 100 complete sheets of 50. Original gum never hinged, Very Fine. **\$1,750**



- 196 ★★ 1976, 31c Bicentennial souv. sheet, "USA 31c" omitted, imperf (1689f). Original gum never hinged, Extremely Fine. Rare, only 6-8 reported (Photo). **\$950**
- 197 ★★ 1978, 13c CAPEX souvenir sheet (1757). Sealed pack of 100 sheets. Original gum never hinged, Very Fine. **\$624 face value**



- 198 ★★ 1979, 15¢ John Paul Jones, perf 12 (1789B). Left margin single, original gum never hinged, Extremely Fine. Gem mint single of this rare perf variety (Photo). \$3,000

Expertization: with photocopy of 1995 P.F. certificate for block of 12 from which this block came.



- 199 ★★□ 1980, 15¢ Benjamin Banneker, imperf vertically (1804a). Imperforate vertically top right plate block of 12. Original gum never hinged, unique and Very Fine. Only 25 pairs issued (Photo). \$1,650 as pairs, unpriced as PB

Expertization: with 1990 P.F. certificate.



- 200 ★★ 1980, 15¢ Christmas, imperf (1843a). Top plate strip of 20. Original gum never hinged, lower left corner single with light corner crease, otherwise Very Fine (Photo). \$450 as pairs

Expertization: with 2009 A.P.S. certificate.



- 201 ★★ 1983, 1¢ Omnibus coil, imperf (1897b). Line strip of four, plate no. 6. Original gum never hinged, Very Fine. Only 150-250 pairs issued (Photo). Datz \$2,100



- 202 ★★□ 1987, 22¢ Girl Scouts, red & black (engraved) omitted (2251b). Red and black intaglio colors omitted, bottom sheet margin block of four. Original gum, never hinged, F.-V.F., extremely scarce (Photo). **\$6,000 as singles**

Expertization: with photocopy of 2000 A.P.S. certificate for full pane of 50.

- 203 ★★ 1994, 29¢ Legends of the West, recalled (2870). Three sheets, one in original envelope, original gum never hinged, Very Fine. **\$375**
- 204 ★★ 1994, \$2 Madison Sheet (2875). Two panes with major double transfer, three panes with minor double transfer, and two panes with unlisted plate crack in lower right circle on position four. Original gum never hinged, Very Fine. **\$207+**
- 205 ★ 1997, 32¢ Bugs Bunny (3137-3138). Two panes of first with plate numbers (from uncut press sheets) plus two normal, two panes of the latter (die cutting extends, imperf stamp). Very Fine. **Estimate \$100 - 150**

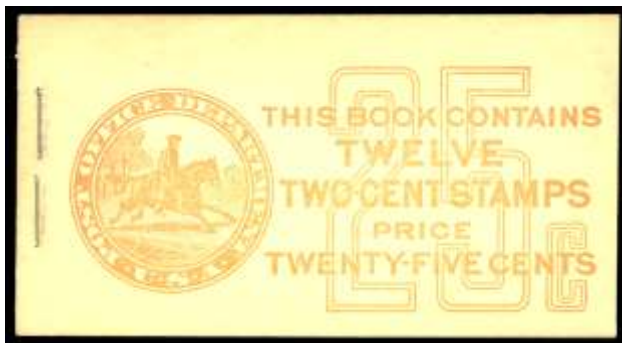
Booklets



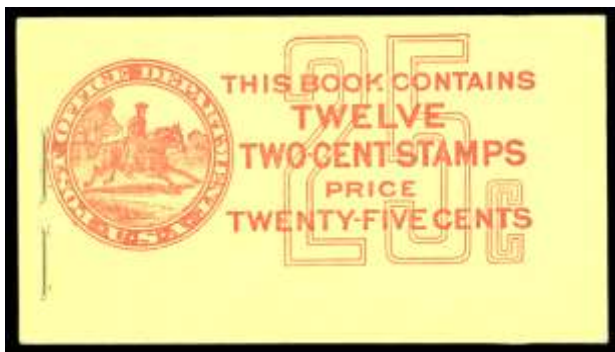
- 206 BK★★ Booklet, 1914, 25¢, green on green cover (BK41). Complete and unexploded. Original gum never hinged, all position J, covers creased, Fine (Photo). **\$300**



- 207 BK★★ Booklet, 1914, 73¢, red cover (BK43). Complete and unexploded. Original gum never hinged, cover creases, F.-V.F. (Photo). **\$300**



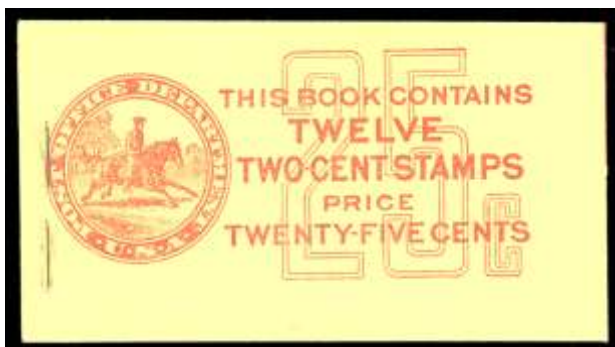
- 208 BK★★ Booklet, 1914, 25¢, red on buff cover (BK44). Complete and unexploded. Original gum never hinged, fresh and Fine (Photo). **\$500**



- 209 BK★★ Booklet, 1917, 25¢, red on buff cover (BK58). Complete and unexploded. Original gum never hinged, fresh Fine (Photo). \$250



- 212 BK★★ Booklet, 1918, 37¢, violet on sage cover (BK62). Complete and unexploded. Position K, original gum never hinged, F.-V.F (Photo). \$500



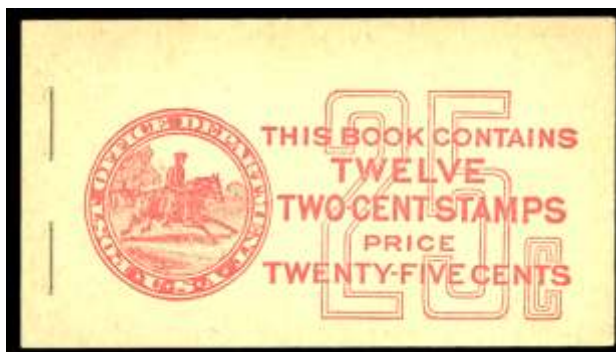
- 210 BK★★ Booklet, 1917, 25¢, red on buff cover (BK58). Complete and unexploded. Original gum never hinged, fresh and Fine (Photo). \$250



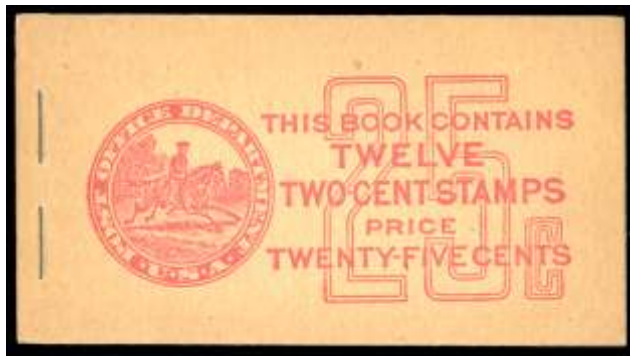
- 213 BK★★ Booklet, 1923, 97¢, green on lavender cover (BK67). Complete and unexploded. Mild cover creasing, F.-V.F (Photo). \$650



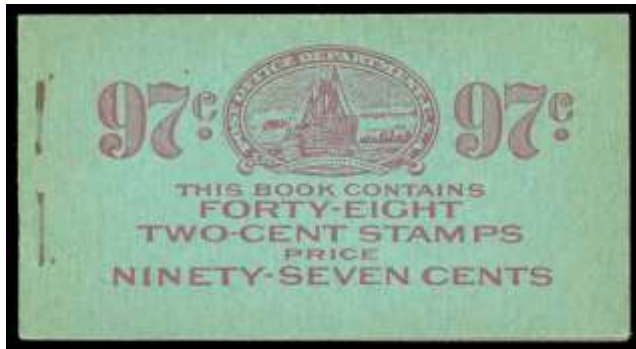
- 211 BK★★ Booklet, 1917, 49¢, red on pink cover (BK59). Complete and unexploded. Original gum never hinged, F.-V.F (Photo). \$400



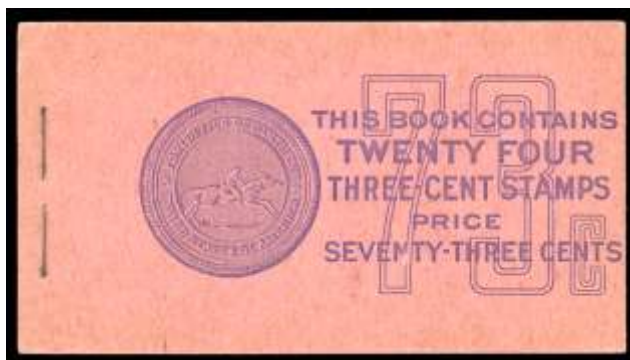
- 214 BK★★ Booklet, 1923, 25¢, red on buff cover (BK69). Complete and unexploded. Panes position K, original gum never hinged, one stamp with natural inclusion, F.-V.F (Photo). \$400



- 215 BK★★ Booklet, 1926, 25¢, red on buff cover (BK72). Complete and unexploded. Original gum never hinged, panes average as often, booklet Very Fine (Photo). \$725



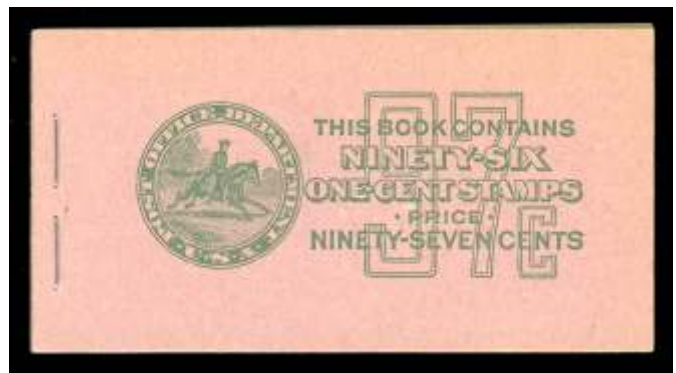
- 216 BK★★ Booklet, 1927, 97¢, red on blue cover (BK83). Complete and unexploded. Original gum never hinged, F.-V.F (Photo). \$900



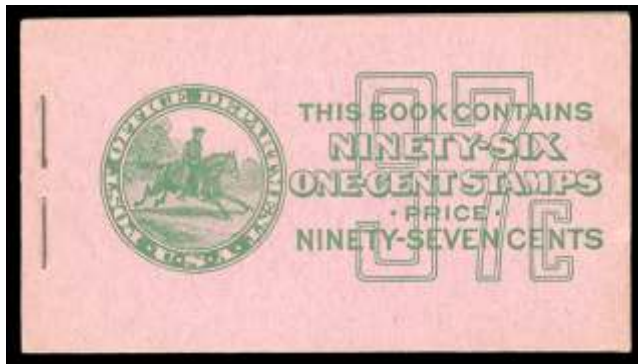
- 217 BK★★ Booklet, 1932, 73¢, violet on pink cover (BK85). Complete and unexploded. Original gum never hinged, minor cover corner crease and light crease back cover, Very Fine (Photo). \$350



- 218 BK★★ Booklet, 1939 and 1958 (BK89, BK108). Complete and unexploded. Original gum never hinged, F.-V.F (Photo). \$275



- 219 BK★★ Booklet, 1942, 97¢, green on lavender cover (BK91). Complete and unexploded. Fresh and Very Fine (Photo). \$450



- 220 BK★★ Booklet, 1942, 97¢, green on lavender cover (BK91). Complete and unexploded. Original gum never hinged, fresh and choice, F.-V.F (Photo). \$450



- 221 BK★★ Booklet, 1942, 97¢, green on lavender cover (BK91). Complete and unexploded. Original gum never hinged, top pane lightly toned, otherwise fresh and F.-V.F (Photo). \$450



- 222 BK★★ Booklet, 1942, 97¢, red on blue cover (BK94). Complete and unexploded. Original gum never hinged, a little rust on staples, fresh F.-V.F (Photo). \$350

- 223 BK★★ Booklet, 1977, 13¢ Flag over Capitol, perf 11x10½ (BK132). Complete and unexploded. 40 booklets, original gum never hinged, Very Fine. \$840



- 224 BK★★ Airmail booklet, 1963, \$2, red on pink cover (BKC12). Complete and unexploded. Original gum never hinged, Very Fine (Photo). \$275



- 225 BK★★ Airmail booklet, 1964, \$2, red on pink cover (BKC18). Original gum never hinged, Very Fine (Photo). \$350

Airmail



- 226 ★ **Airmail, 1918, 24¢ carmine rose & blue, High Flying Plane (C3).** One of the highest we've seen with the wing tip well into the "a" of postage, original gum possibly never hinged, large natural gum skip, reperfed at top, otherwise fresh and Fine, scarce dramatic vignette shift (Photo). **\$100**



- 227 ★★□ **Airmail, 1923, 8¢ dark green (C4).** Bottom plate no. 14825 block of six. Original gum never hinged, F.-V.F (Photo). **\$330**



- 228 BK★★ **Airmail, 1928, 10¢ Lindbergh, booklet pane of 3 (C10a).** Original gum never hinged, excellent centering, beautifully balanced margins, Extremely Fine (Photo). **\$115**



- 229 ★ **Airmail, 1930, Graf Zeppelin complete (C13-C15).** Matched set of right plate number singles, original gum lightly hinged, beautifully centered, especially \$1.30 and \$2.60, choice Very Fine to Extremely Fine set (Photo). **\$1,060**



- 230 ★ **Airmail, 1930, Graf Zeppelin complete (C13-C15).** \$1.30 plate number single, complete, original gum never hinged, \$1.30 thin, disturbed original gum, otherwise Very Fine, fresh set (Photo). **\$1,060**



- 231 ★★ Airmail, 1933, 50¢ “Chicago” Zeppelin (C18). Bottom plate no. 21178 and arrow block of six. Original gum never hinged, quite fresh, outstanding centering, trivial tiny natural inclusion reverse only, Extremely Fine (Photo). \$600



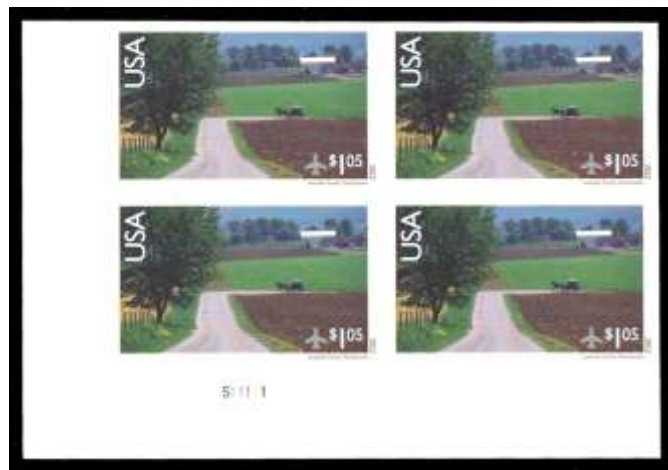
- 232 ★★ Airmail, 1933, 50¢ “Chicago” Zeppelin (C18). Wide top plate no. 21171 block of six. Original gum never hinged, minimal gum skips and bends, F.-V.F (Photo). \$600



- 233 ★★□ Airmail, 1933, 50¢ “Chicago” Zeppelin (C18). Full top plate no. 21177 block of six, original gum never hinged, well centered, fresh and crisp Very Fine, choice (Photo). \$675



- 234 ★★ Airmail, 1963, 15¢ Montgomery Blair (C66 var.). Sheet of 50. Original gum never hinged, with progressive color missing from the bottom of the sheet to the top, striking, fresh, Very Fine (Photo). Estimate \$100 - 150



- 235 ★★ Airmail, 2012, \$1.05 Amish Horse and Buggy (C150a). Original gum never hinged, clear rouletting evident on reverse, small black smudge in bottom margin and slight wrinkle ? otherwise Very Fine (Photo). \$1,300 as 2 pairs

Special Delivery and Registry



- 236 ★ **Special Delivery, 1888, 10¢ blue (E2).** Original gum trivial tiny perf disc adherence, wonderfully well centered within very wide margins, stunning color, Extremely Fine (Photo). **\$500**



- 237 ★ **Special Delivery, 1916, 10¢ pale ultramarine (E10).** Original gum, very well centered, bright pastel shade, Very Fine to Extremely Fine (Photo). **\$320**



- 238 ★★ **Registry, 1911, 10¢ ultramarine (F1).** Original gum never hinged, well centered, bright color and paper, Extremely Fine (Photo). **\$160**



- 239 ○ **Registry, 1911, 10¢ ultramarine (F1).** Perfect centering within wide margins, lovely fresh color, neat registry postmarks, Extremely Fine, a gem at the top of its grade. SMQ \$125 (Photo). **\$14**

Expertization: **with 2013 P.F. certificate graded XF-SUP 95.**

Postage Due



- 240 ★★ **Postage Due, 1884, 1¢ red brown (J15).** Original gum never hinged, bright and fresh, well centered, Very Fine (Photo). **\$190**



- 241 ○ **Postage Due, 1884, 50¢ red brown (J21).** Very well centered, excellent color, neat cancel, choice Very Fine, scarce in this premium used condition (Photo). **\$250**

Expertization: **with 2004 P.F. certificate.**



- 242 ○ **Postage Due, 1891, 50¢ bright claret (J28).** Perfectly centered, brilliant color, light cancel, Extremely Fine, wonderful example of this high value Postage Due (Photo). **\$250**

Expertization: **with 1997 P.F. certificate.**



- 243 ○ Postage Due, 1914, 50¢ carmine lake, S.L. watermark, perf 10 (J58). Chicago pre-cancel, rich color and nicely centered for this, nibbed corner perf, Fine (Photo). \$750



- 244 ○ Postage Due, 1914, 50¢ carmine lake, S.L. watermark, perf 10 (J58). 2, Chicago pre-cancel, one inverted, one slight crease, other slightly blunted perfs, otherwise V.G.-Fine (Photo). \$1,500

Offices in China and Officials



- 245 ★ Offices in China, 1919, 4¢ to 60¢ (K2//K14). Original gum hinge remnant, few minor flaws, otherwise generally well centered and fresh, F.-V.F. K2//K14 (Photo). \$867



- 246 ★ Offices in China, 1919, \$1 on 50¢ light violet (K15). Original gum, nicely centered, bright color, F.-V.F (Photo). \$550



- 247 ★ Offices in China, 1919, \$2 on \$1 violet brown (K16). Original gum hinge remnant, nicely centered, exceptionally fresh, F.-V.F (Photo). \$425



- 248 ★ Offices in China, 1922, 2¢ on 1¢ green and 4¢ on 2¢ carmine (K17-K18). Original gum hinge remnant, quite well centered for these, fresh Very Fine (Photo). \$190



- 249 P **Officials, 1873 issues complete, large die proofs (O1P1-O93P1).** Complete set on India paper, majority removed from card backing and full sized (2½"x3"), a few slightly smaller, all individual departments being from same printings and showing matching colors, expect a few small India flaws/faults from removal of card backing, otherwise Very Fine **(Photo)**. **\$7,760**



- 250 ○ **Treasury Dept., 1879, 90¢ brown (O113).** Nicely centered for this, rich color, split cork cancel, F.-V.F., a most attractive example of this scarce high value **(Photo)**. **\$750**



- 251 ○ **War Dept., 1879, 30¢ rose red (O120).** Beautifully centered, bright color, cork cancel, fresh Very Fine to Extremely Fine **(Photo)**. **\$100**

Expertization: **with 2007 P.S.E. certificate.**

Parcel Post and Newspaper Stamps



- 252 ★★ Parcel Post, 1913, 1¢ to 10¢ (Q1-Q6). Original gum never hinged, 1¢ natural gum skip, bright colors, fresh F.-V.F (Photo).
\$277



- 253 ★ Newspaper, 1875, 9¢ gray black, C.B.N.C. "Hard Paper" Special Printing (PR38). Without gum as issued, crisp color and paper, couple trifling nibbed perfs at bottom, F.-V.F (Photo).
\$1,050



- 254 ★ Newspaper, 1879, \$48 yellow brown, A.B.N.C. printing (PR78). Unused no gum, nicely centered, rich color, cert says "small faults" (couple thins), F.-V.F. appearance (Photo).
\$350



- 255 ★ Newspaper, 1883, 2¢ intense black, A.B.N.C. "Soft Paper" Special Printing (PR80). Without gum as issued, very well centered, rich color, small thins, choice Very Fine appearance (Photo).
\$1,750

Expertization: with 2017 P.S.E. certificate.

Carriers and Locals



- 256 ▲ **New York, N.Y., U.S. City Despatch Post, 1842-45, 3¢ black on light blue (6LB3).** Tied on piece by indistinct red "U.S." in frame, matching "U.S. City Despatch Nov 18 1 o'clock" c.d.s., margins all around. Very Fine (Photo).
\$750



- 257 (★) **Adams & Co.'s Express, 1854, 25¢ black (1L4).** Unused without gum, "ICW" initials, large margins, fresh Very Fine, scarce (Photo).
\$750



- 258 ▲ **Blood & Co., 1848 (2¢) black on pale green (15L11).** Used on piece, usual neat cancel, fresh Very Fine (Photo).
\$325



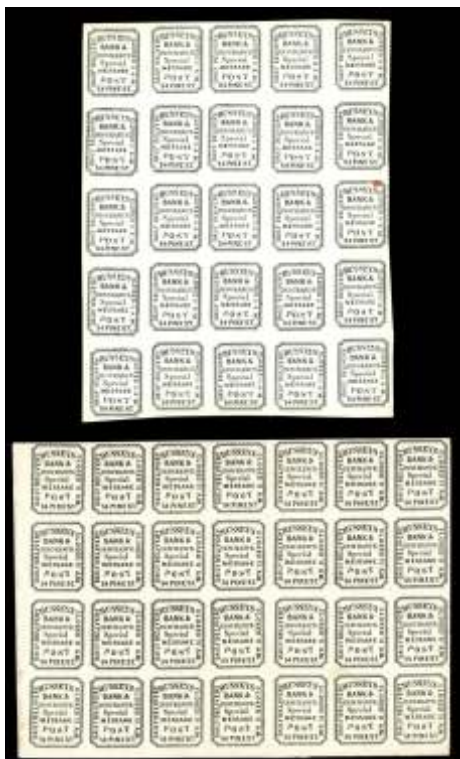
- 259 ★ **Boyd's City Dispatch, envelope, 1875, 2¢ red on cream (20LU27).** Unused entire, F.-V.F., unpriced unused (Photo).
Estimate \$100 - 150



- 260 (★) **Faunce's Penny Post, 1885 (1¢) black on red (152L1).** Unused without gum, fresh Very Fine (Photo).
\$325



- 261 ○ **Gahagan & Howe City Express, 1849-70 (5¢) blue (70L2).** Large margins, manuscript cancel, Very Fine (Photo).
\$400



- 262 ★ **Hussey's Post, 1872, 2 different (87L43, 87L47).** Complete sheet of 28 of the first, sheet of 20 of the second. Original gum lightly hinged on one or two only, gum bends, latter with red spot on one, fresh Very Fine **(Photo)**.
\$340 as singles

- 263 (★) **Hussey's Post, 1863, Special Delivery (87LE1, 2, and 5).** First in a sheet of 20 with vertical gutter (original gum light creases), others panes of 10. Unused, Very Fine **(Photo on web site)**.
Estimate \$100 - 150



- 264 (★) **Westervelt's Post, 1863 (1¢) black on buff (144L1).** Sheet of six. Unused without gum, fresh Very Fine, only two had been listed in Patton's book but several more are known now **(Photo)**.
\$675

Provenance: **believed to be Springer.**

Postal Stationery



- 265 ★ **Envelope, 1925, 1½¢ on 2¢ green on amber (U487).** Approximately 33 x 35mm cut square, type 8 surcharge (city type O), flaws on reverse, otherwise Very Fine, pencil notation on reverse "50 copies known" **(Photo)**. **\$900**

Expertization: **with clear 2015 P.F. certificate.**

- 266 ★ **Envelope, 2006, 39¢ Franklin (U659).** Entires. Post office box of 500, #10 envelopes, fresh Very Fine. Face value \$195.
Estimate \$100 - 150



- 268 ★✉ **Postal Card, 1964, 4¢ Social Security, blue omitted (UX51b).** Mint card, fresh and crisp, Very Fine **(Photo)**. **\$625**



- 267 ★✉ **Postal Card, 1958, 2¢+1¢ carmine rose on buff, "General Electric" (UX47).** Mint card, type 2, "Schmidt's Radio and T.V. service, Platterwilk WIS.", imprint on ETR-1725-2-ad **(photo)**. **\$225**

Revenue



- 269 ○ Revenue, 1863, First Issue, 3¢ **Playing Cards, perf'd (R17c)**. Very light manuscript cancel, beautifully centered, bright color, fresh and choice Very Fine **(Photo)**. **\$200**



- 270 ○ Revenue, 1863, First Issue, 4¢ **Playing Cards, perf'd (R21c)**. Manuscript cancel, good color, small faults, reperfed, o/w vf and quite an attractive example of the scarce 4¢ Playing Card **(photo)**. **\$750**



- 271 ○ Revenue, 1871, First Issue, 6¢ **Proprietary, perf'd (R31c)**. Well centered for issue, rich color, attractive "face free" blue handstamp, usual small flaws/faults, none detracting, Very Fine appearance. (see Scott footnote) **(Photo)**. **\$1,600**



- 272 ○ Revenue, 1862, First Issue, 25¢ **Bond, imperf (R43a)**. Light manuscript cancel, large even margins, fresh Very Fine **(Photo)**. **\$300**



- 273 ○ Revenue, 1863, First Issue, \$2.50 **Inland Exchange, imperf (R84a)**. 1863 manuscript cancel, large margins, excellent color, small unnoticeable sealed tear in margin, choice Very Fine appearance **(Photo)**. **\$12,500**

A MOST HANDSOME EXAMPLE OF THIS IMPERF REVENUE RARITY, OF WHICH LESS THAN 30 ARE LISTED IN THE MODERN P.F. CERTIFICATE SEARCH, ABOUT TWO-THIRDS OF WHICH HAVE FAULTS.

Expertization: **with 2021 P.F. certificate.**



- 274 ○ Revenue, 1862, First Issue, \$5
Manifest, imperf (R90a). Small, neat ms cancel,
large margins, close at upper left, fresh color. Very
Fine **(Photo).** **\$250**



- 275 ○ Revenue, 1862, First Issue, \$5 **Pro-
bate of Will, imperf (R92a).** Light 1865 manuscript
cancel, very large beautifully balanced margins,
Extremely Fine **(Photo).** **\$700**



- 276 ○ Revenue, 1862, First Issue, \$15
Mortgage, blue, perf'd (R97c). Neat 1865 manu-
script cancel, brilliant color, well centered, trivial
tiny corner flaw, certainly in no ways detracts,
choice Very Fine appearance **(Photo).** **\$300**



- 277 ○ Revenue, 1862, First Issue, \$20
Probate of Will, imperf (R99a). Manuscript can-
cel, ample to large margins, rich color, faults includ-
ing a sealed tear upper right, still an attractive
example of this rare high value first issue **(photo).**
\$3,500



- 278 ○ **Revenue, 1863, First Issue, \$25 Mortgage, imperf (R100a).** 1865 manuscript cancel, large to huge margins three sides, in a little at top, beautiful rich color, small thin in no way detracts, a handsome Fine appearing example of this scarce imperf high value **(Photo)**. **\$3,250**



- 279 ○ **Revenue, 1864, First Issue, \$200 U.S. Internal Revenue, perf'd (R102c).** 1866 manuscript cancel, lovely rich colors, attractive centering for this difficult high value, Fine **(Photo)**. **\$850**



- 280 ○ **Documentary, 1871, Second Issue, \$1.90 blue & black (R122).** 1872 manuscript cancel, fresh color, F.-V.F **(Photo)**. **\$500**

- 281 BK★ **Rectified Spirits Class A&B, 1940.** Denominated 1 gallon-130 gallons, booklet panes of four with receipt tabs at left, 12 of class A, 14 of class B, without gum as issued, overall size 11½" x 14", few minor corner bends, fresh Very Fine **(Photo on web site)**. **Estimate \$500 - 750**

Provenance: **National Postal Museum.**



- 282 ★ **Wines, 1942, 80¢ green & black (RE142).** Without gum as issued, fresh Very Fine **(Photo)**. **\$400**



- 283 ★★ **Camp Stamp, 1985, 50¢-\$3.00 (RVC1-RVC4).** Complete on original backing, never hinged, Very Fine with original envelope (Photo). **\$800 250563**



- 284 ★★ **Camp Stamp, 1985, 50¢-\$3.00 (RVC1-RVC4).** Complete on original backing, never hinged, Very Fine, with original envelope (Photo). **\$800**



- 285 ★★ **Camp Stamp, 1986, 50¢ black on pink, \$5 black on silver (RVC5,9).** On original backing, never hinged, Very Fine (Photo). **\$1,500**



- 286 (★) **Trailer Permit, 1939, 50¢ bright blue (RVT1).** Straight edge as always, unused without gum, fresh Very Fine, rare (Photo). **\$2,500**



- 287 ○ **Trailer Permit, 1939, 50¢ bright blue (RVT1).** Natural straight edge as always, partly affixed to Pinnacles National Monument license, 1952, stamp light crease, and license creases both as would be expected from normal use., Very Fine for this exceedingly rare revenue (Photo). **\$4,500**



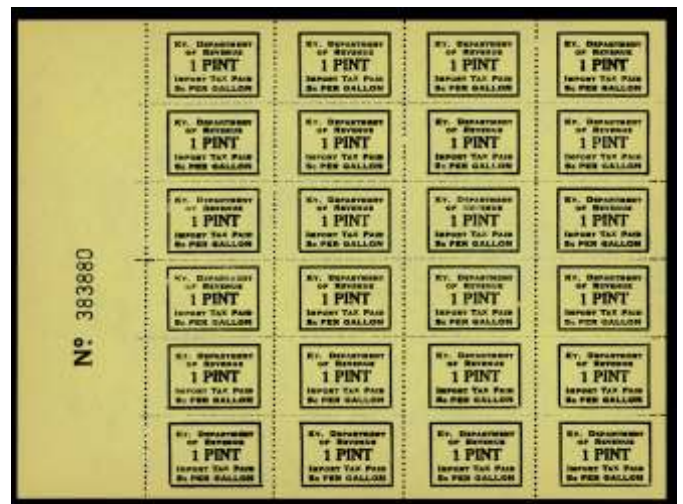
- 288 ○ **Trailer Permit, 1939, \$1 carmine (RVT2).** Natural straight edge as always, affixed to Rocky Mountain National Park license, Aug 20, 1960, stamp with Ranger control number "2", Very Fine (Photo). **\$800**



- 289 ★ **Distilled Spirits Excise Tax, 1950, \$40,000 yellow green & black (RX24).** Without gum as issued, fresh Very Fine (Photo). **\$750**



- 290 ★ **Distilled Spirits Excise Tax, 1952, \$3,000 yellow green & black (RX44).** Without gum as issued, fresh Very Fine (Photo). **\$750**



- 291 ★ **Kentucky Department of Revenue stamp.** Complete sheet of 20. Without gum as issued, high "X" in "tax" variety, scarce in full pane. SRSC \$540 (Photo). **Estimate \$100 - 150**

Duck Stamps



- 292 ★ **Hunting Permits complete, 1934-1971 (RW1-38).** Original gum some hinge remnants, RW4 never hinged (trivial gum thin), fresh and well centered, overall Very Fine, first 10 removed from album pages, others mounted, about as nice a hinged set could be desired. Cat 1934-1945 \$1,890, cat 1946-1971 (as never hinged) \$2,185 **(Photo)**. **Estimate \$750 - 1,000**




- 293 ★ **Hunting Permit, 1934, \$1 Mallards (RW1).** Original gum lightly hinged (tiny gum skip), well centered, bright and fresh, Very Fine **(Photo)**. **\$300**



- 294 ★ **Hunting Permit, 1937-1941 (RW 4-RW8).** Last four with plate numbers, original gum, several hinge remnants, RW7 natural gum skips, fresh F.-V.F **(Photo)**. **\$665**
- 295 ★ **Hunting Permit, 1993-96, 4 different (RW60-RW63).** Single and plate block of four of each, plus a single of RW59. Original gum never hinged, Very Fine. **\$655**

Confederacy



- 296  **Confederacy**, 1863, 10¢ blue, officially perforated 12½ (12f). Attractive single tied on homemade cover to Crawfordville, Ga. By Atlanta, Ga, 7/5 c.d.s., cover with two perfs folded over prior to usage (trivial), typical small cover edge flaws includes no backflap, an impressive and scarce cover (Photo). **\$900**

U.S. Possessions



- 297 ★ **Canal Zone**, 1904, 1¢-10¢ overprinted U.S. complete (4-8). Complete, 5¢ regummed, 10¢ tropicalized gum as often, others original gum, fresh and well centered, F.-V.F., attractive set (Photo). **\$395**



- 298 ★ **Canal Zone**, 1924-25, ½¢-\$1, complete, flat "A" (70-81). Original gum lightly hinged, couple never hinged including 50¢, F.-V.F (Photo). **\$609**



- 299 BK★★ **Canal Zone**, 1924, 2¢ carmine, flat “A”, booklet pane of 6 (73a). Original gum never hinged, fresh and crisp, Fine (Photo).
\$175 as hinged



- 301 BK★ **Canal Zone**, 1927, 2¢ carmine, booklet pane of 6 (101a). Original gum very lightly hinged, nicely centered, bright and fresh, Very Fine (Photo).
\$200



- 300 ★ **Canal Zone**, 1924, \$1 violet brown, flat “A” (81). Original gum, well centered, fresh Very Fine (Photo).
\$225



- 302 BK★ **Canal Zone**, 1933, 3¢ deep violet, booklet panes of 6, handmade, perf'd margins (115c). Two panes, one left and one right, original gum never hinged, set of covers included, Very Fine (Photo).
\$160 as hinged



- 303 ★ **Canal Zone, Postage Due, 1924, 10¢ deep claret (J14).** Original gum, well centered, Very Fine (Photo). **\$250**



- 304 ★ **Guam, 1899 overprints, 1¢-15¢ (1-8, E1).** Original gum hinge remnant, 8¢ dry original gum, bright colors, 10¢ small thin, otherwise fresh and Fine (Photo). **\$810**



- 305 ★★ **Guam, 1899, 15¢ olive green (10).** Original gum never hinged, fresh and choice F.-V.F (Photo). **\$300**



- 306 ★ **Guam, 1899, 50¢ orange (11).** Original gum hinge remnant, very well centered, stunning color, Very Fine (Photo). **\$350**



- 307 ★ **Guam, 1899, 50¢ orange (11).** Tropicalized original gum, brilliant color, F.-V.F (Photo). **\$350**



- 308 ★ **Guam, 1899, \$1 black, type I (12).** Original gum hinge remnant, intense color on bright paper, Fine (Photo). **\$350**



- 309 ★ **Guam, Guard Mail, 1930, 2¢-4¢ complete (M1-M2).** Original gum (a bit tropical), fresh and well centered, 4¢ reperfed, otherwise Very Fine (Photo). **\$625**



- 310 ★ **Guam, Guard Mail, 1930, 2¢ green (M1).** Original gum very lightly hinged if at all, fresh and Fine (Photo). **\$400**



- 311 ★★ **Hawaii**, 1890, 5¢ deep indigo (52C). Original gum never hinged, near perfect centering, great color, Extremely Fine (Photo).
\$280



- 312 BK★ **Philippines**, 1899, 2¢ red, booklet pane of 6 (214b). Position H, original gum very lightly hinged if at all, fresh and crisp F.-V.F (Photo).
\$200



- 313 BK★/(★) **Philippines**, 1899, 2¢ red, booklet pane of 6 (214b). Two panes, one with dry tropical gum, other regummed, fresh F.-V.F (Photo). \$400



- 314 (★) **Philippines**, 1901, \$1 black, type II (223A). Unused without gum, fresh Fine example of this rare stamp (Photo).
\$1,500



- 315 ★ **Philippines**, 1901, \$1 black, type II (223A). Original gum hinge remnant, bright and fresh, tiny thin, Fine appearance handsome example of this rare high value (Photo).
\$1,500



- 316 ★ **Philippines**, 1901, \$2 dark blue (224). Original gum, fresh and well centered, Very Fine (Photo). **\$350**

Expertization: with 1995 P.F. certificate.



- 317 ★ **Philippines**, 1901, \$2 dark blue (224VAR). With distinctive broken second "l" in "Phillipines" original gum, slight thin, fresh F.-V.F. appearance (Photo). **\$350+**



- 318 ★ **Philippines**, 1901, \$5 dark green (225). Original gum hinge remnant, well centered and fresh, lovely color, Very Fine, choice (Photo). **\$500**



- 319 ★ **Philippines**, 1901, \$5 dark green (225). Most original gum minor offset on reverse, outstanding centering, exceptionally fresh, Extremely Fine (Photo). **\$500**



- 320 ★ **Philippines**, 1904, \$1 black (237). Original gum hinge remnant, nicely centered, bright color, F.-V.F. (Photo). **\$300**

Provenance: Col. Green.



- 321 ★ **Philippines**, 1904, \$2 dark blue (238). Original gum hinge remnants, fresh rich color, Fine (Photo). **\$550**

Provenance: Col. Green.



- 322 ★ **Philippines**, 1904, \$2 dark blue (238). Original gum hinge remnant, nicely centered, bright color, tiny completely unnoticeable closed tear, F.-V.F. appearance (Photo). **\$550**



- 323 ★ **Philippines**, 1904, \$5 dark green (239). Original gum, rich color, reperfed at right, tiny barely visible stain, Fine appearance (Photo). **\$800**

Expertization: with 1991 Holcombe certificate and illegible handstamp.



- 324 BK★ **Philippines**, 1904, 2¢ carmine, booklet pane of 6 (240a). Position E, lightly disturbed original gum, rich color, rejoined perfs along guide lines, small tear (?), Fine appearance (Photo). **\$1,500**



- 325 ★ **Philippines**, 1908, 4p and 10p (253-254). Original gum hinge remnant, well centered, fresh Very Fine (Photo). **\$385**



- 326 ★ **Philippines**, 1925-1931, imperfs 1p-10p (350-353). Original gum hinge remnant, good margins and colors, first three with light expert backstamp, Very Fine (Photo). **\$295**



- 327 ★ **Philippines**, Airmail, 1926, 1p Madrid-Manila Flight (C17). Original gum, well centered, fresh and Very Fine (Photo). **\$200**



- 328 ★ **Philippines**, Postage Due, 1899, 50¢ deep claret (J5). Original gum hinge remnant, fresh and Fine (Photo). **\$250**



- 329 ★✉ **Philippines**, Postal Card, 1881, 1¢ black on buff (UX7). Mint card, absolutely tiny edge flaws, still fresh and Very Fine (Photo). **\$275**



- 330 ★✉ **Philippines, Postal Card - Paid Reply, 1900, 2¢+2¢ blue (UY1).** Mint card, Very Fine (Photo). **\$160**



- 331 ★✉ **Philippines, Postal Card - Paid Reply, 1903, 2¢+2¢ blue (UY3).** Mint card, negligible edge flaws, F.-V.F (Photo). **\$300**



- 332 ★ **Puerto Rico, Revenues, 1901, 1¢-\$50 complete (R1-R9).** Complete set, original gum, few minor flaws, \$50 sound, still fresh and F.-V.F (Photo). **\$725**

British Commonwealth

GREAT BRITAIN



- 333 ○ **Great Britain, 1840, 1d intense black (1a).** Striking deep shade, ample to large margins, Very Fine. SG 1 (Photo). **\$325**



- 334 ○ **Great Britain, 1840, 1d black (1).** Two singles with Maltese Cross cancels, one red, one black, margins almost all around, minor faults, invisible from front, fresh Fine appearance (Photo). **\$640**



- 335 ▲ **Great Britain, 1840, 1d black (1).** Tied on piece with red Maltese Cross cancel, Very Fine (Photo). **\$320**



- 336 ○ **Great Britain, 1840, 2d blue (2).** Ample to large margins, stunning color with bright red Maltese Cross cancel, trivial thin speck, choice Very Fine appearance (Photo). **\$700**



- 337 ○ **Great Britain, 1847, Queen Victoria (embossed), 1s pale green (5).** Large balanced margins, Very Fine (Photo). **\$900**



- 338 ○ **Great Britain, 1862, Queen Victoria, 9d straw, Emblems watermark (40).** Well centered, bold cancel, Very Fine (Photo). **\$400**



- 339 ○ **Great Britain, 1876, Queen Victoria, 4d vermilion, Large Garter watermark (69).** Well centered, bright color, Very Fine (Photo). **\$500**



- 340 ○ **Great Britain, 1884, Queen Victoria, 3d lilac, 4d dull green and 5d dull green (102-103).** Fresh and Fine. SG 191/193 (Photo). **\$520**



- 341 ★★ **Great Britain, 1968, Queen Elizabeth II (Machin portrait), 5d royal blue, imperf (MH8 var.).** Block of four. O.g., never hinged, Very Fine. SG 735c (Photo). **SG £550 (\$700)**



- 342 ★□ **Great Britain, Postage Dues, 1936-37, ½d to 2s6d complete, E 8 R watermark (J18-J25).** Complete in blocks of four. Original gum lightly hinged, two of the 2/6 are never hinged, fresh set F.-V.F. SG D19/26 (Photo). **\$1,285**



- 343 ✉ **Great Britain, Mulready Letter Sheet, 1840, 1d black (U3).** Canceled with a light black Maltese Cross, used from Portsoy to Whitby, Jul 8-9, 1841, with three different postmarks on the reverse; small, barely noticeable tear at the top. Otherwise Very Fine. SG ME1 £550 (\$700) (Photo). **\$500**

AUSTRALIA THROUGH BRITISH GUIANA



- 344 ○ **Australia**, 1930, Kangaroo and Map, £2 black & rose (102). Light cancel, fresh F.-V.F (Photo). **\$925**



- 345 ○ **Barbados**, 1852, "Britannia" (1/2d) yellow green, imperf, blued paper (1a). Ample margins, bright color, well struck Bridgetown "1", Very Fine (Photo). **\$800**



- 346 ○ **Barbados**, 1858, "Britannia" (1/2d) green (1d) deep blue and 1s black, imperf (5, 6, 9). Large margins, rich colors, Very Fine. SG 8, 10, 12a (Photo). **\$385**



- 347 ○ **Barbados**, 1855, "Britannia" (4d) brownish red, imperf, blued paper (4). Clear to large margins, F.-V.F (Photo). **\$325**



- 348 ★ **Bermuda**, 1873, Queen Victoria, 3d yellow buff, perf 14 (3). Large part original gum, bright fresh color, F.-V.F (Photo). **\$600**

Expertization: signed Senf,.



- 349 ★ **Bermuda**, 1875, Queen Victoria, 1d on 1s green (15). Remarkably fresh, o.g., Fine. SG 17 £500 (\$640) (Photo). **\$675**



- 350 ○ **Bermuda**, 1929, King George V, 2s6d black & red on blue to deep blue (95b). Well centered, rich color, neat "Hamilton Bermuda" postmark, Very Fine (Photo). **\$150**



- 351 ○ **Bermuda**, 1924, King George V, 10s green & red on pale emerald (96). Fresh Very Fine (Photo). **\$300**



- 352 ★ **Bermuda**, 1932, King George V, 12s6d gray & orange (97). Original gum, well centered, exceptionally fresh, Very Fine (Photo).
\$300



- 353 ★★□ **Bermuda**, 1938, King George VI, 2d light blue & sepia (109). Six, including a margin block of four. Original gum never hinged, Very Fine (Photo).
\$330



- 354 ★★□ **Bermuda**, 1950-52, King George VI, 2s-5s, 12s6d & £1, perf 13 (123-125, 127-128). Choice corner margin blocks of 4, *all but the 12s6d with cylinder no. 1*. O.g., never hinged, Very Fine. SG 116e//121d £888 as singles (\$1,130) (Photo).
\$740 as hinged singles



- 355 ★★□ **Bermuda**, 1939, King George VI, 10s bluish green & deep red on green, perf 14, chalky paper (126b). A choice bottom sheet margin block of 4. O.g., never hinged. SG 119a £900 as NH singles (\$1,150) (Photo).
\$900 as hinged singles



- 356** ★★ **Bermuda**, 1938, King George VI,
12s6d gray & brownish orange, perf 14, chalky
paper (127c). Usual brownish o.g., never hinged,
Extremely Fine. SG 120a £225 (\$290) **(Photo)**.
\$275 for hinged



- 357 ○ **British Guiana, G.B. Used in Georgetown/Demerara (A3).** G.B. 6d Lilac (Scott #27) rejoined vertical strip of three. All with "AO3" grid cancels, top and bottom singles with small faults, central single sound and, Fine **(Photo)**.
\$420 as three singles

Expertization: **with 1974 R.P.S. certificate.**

CANADA AND PROVINCES




- 358** ○ **Canadian Provinces: New Brunswick, 1851, 6d olive yellow (2).** Clear to large margins, thinned, Fine appearance **(Photo)**. **\$1,200**



- 359** ○ **Canadian Provinces: Newfoundland, 1861, 6½d rose (21).** Large margins, fresh Extremely Fine (Photo). **\$275**



- 360**  **Canadian Provinces: Nova Scotia, 1851 yellow green (4a).** Bisect paying 3p local rate, tied on cover with neat "spoon grid" to Bridgeton, cover originating with Wilmot, NS c.d.s., additional Bridgton receiving back stamp, couple sealed backflap tears (trivial), Very Fine cover **(Photo)**. **\$4,500**

Expertization: **signed W.H.C. 1914 (Coulson),.**



- 361 P **Canada, 1851, Queen Victoria, 12d black, plate proof on India (3P).** With vertical "Specimen" overprint in carmine. Large margins three sides, just into frame line at bottom, minor thin, Fine appearance. Unitrade C\$2,500 (\$1,880) **(Photo)**. Expertization: **with 1981 Greene Foundation certificate.**



- 362 (★) **Canada, 1851, Queen Victoria, 12d black, laid paper (3).** Unused without gum, well clear to large margins, bright fresh color and paper, sharp impression, faint pressed crease, virtually invisible by examination even in fluid, so unobtrusive it was not mentioned in accompanying certificate (but had been noted in 1982 B.P.A. certificate no longer pressed), fully Very Fine appearing **(Photo)**. **\$87,500**

A SIMPLY LOVELY EXAMPLE OF THIS GREAT 19TH CENTURY BRITISH COMMONWEALTH RARITY OF WHICH 25 UNUSED SINGLES HAVE BEEN RECORDED (SIEGEL CENSUS) AND ONLY ABOUT HALF OF THESE BEING SOUND FOUR MARGIN EXAMPLES.

Expertization: **with 2003 Greene Foundation certificate "Genuine in all respects", 1982 B.P.A. certificate, no longer present.**



- 363 (★) **Canada, 1851, Queen Victoria, 12d black, laid paper (3).** Unused (small part of gum residue), bright color, fine impression, strong laid lines, lower margin added, upper right corner repaired, crease, Very Fine appearance **(Photo)**. **\$87,500**

FAULTS NOT WITHSTANDING, THIS IS A MOST HANDSOME UNUSED EXAMPLE OF THIS CLASSIC RARITY WHICH IS SELDOM AVAILABLE SOUND.

Expertization: **with 1930 Royal (submitted by Hon. E.R. Ackerman) and 2015 Greene Foundation certificate and 2015 A.I.E.P certificate.**



- 364 ○ **Canada, 1851, Queen Victoria, 12d black, laid paper (3).** Four ample margins, fresh crisp colors and a finely detailed impression, four-ring numeral "21" Montreal cancel, accompanying certificate says, "tiny rust stain on chin," which in our opinion is completely trivial and invisible, there are a couple tiny filled thin specks, visible only in fluid, and not mentioned in the cert., choice Very Fine appearance **(Photo)**. **\$135,000**

A BEAUTIFUL USED SINGLE, AND ONE OF ONLY TWO RECORDED WITH A 4-RING CANCEL.

Expertization: **with 2015 Greene Foundation certificate.**



365

- 365 ○ **Canada, 1851, Queen Victoria, 12d black, laid paper (3).** Horizontal pair. Ample to large margins to barely touching at the upper right, deep color, fine impression and light concentric ring cancels, faint crease, visible only in fluid, exceptionally fresh and choice, Very Fine appearance. Unitrade C\$360,000 (\$270,000) **(Photo).**
\$270,000

A STUNNING USED PAIR OF THE ICONIC TWELVE PENCE, POSSIBLY THE FINEST OF THE THREE RECORDED USED PAIRS.

Expertization: **with 1984 P.F. certificate (1961 P.F. cert no longer present) and 2015 Green Foundation certificate.**

The other two known pairs are both cut in, one, rather severely. The latter pair has a 1926 Royal cert, the other has not been certified, which means neither has been subjected to a modern examination. Hence, this may well be the finest pair.

The Twelve Pence Black had an interesting history. Like all other pence issues of Canada it was engraved and printed by Rawdon Wright, Hatch & Edson of New York. A total of 51,000 stamps and a proof imprint sheet were shipped to Canadian postal authorities on May 14, 1851. However, the stamp proved to be unpopular with the public and only saw limited distribution, with a total of only 1,510 stamps being sent to just 18 Post Offices. Of those, 60 were returned by the Ingersoll Post Office, leaving a mere 1,450 stamps sold. The remaining 49,490 stamps were destroyed on 1 May 1857.

There is some speculation as to why this stamp was inscribed "Twelve Pence" rather than the customary "One Shilling", especially since the Colonies of New Brunswick and Nova Scotia both used one shilling stamps. A possible explanation is that at the time the Canadian pound was depreciated relative to its British equivalent and the other provinces also had their own exchange rates. The result was confusion among the public and postal officials as to exactly what a "shilling" was worth. Expressing the value as "Twelve Pence" may have been an effort to alleviate this confusion.

The limited distribution and lack of acceptance by the consumer, who seems to have preferred to use a pair of the 6d Consort, has resulted in the 12d black being the most sought-after rarity in Canadian philately as well as one.



- 366 ○ **Canada, 1852, Beaver, 3d red (4).** Large margins, light town cancel, fresh Very Fine (Photo). **\$225**



- 367 ○ **Canada, 1852, Beaver, 3d red, ribbed paper (4c).** Four clear margins, rich color, fresh and Fine, scarce (Photo). **\$575**



- 368 ○ **Canada, 1855, Prince Albert, 6d greenish gray (5b).** Ample to large margins, crisp color, certificate says "creased" which is just an imperceptible bend, still Very Fine (Photo). **\$1,200**

Expertization: with 1998 Greene Foundation certificate.



- 369 ○ **Canada, 1855, Jacques Cartier, 10d blue (7).** Ample balanced margins, rich color, choice Very Fine (Photo). **\$1,650**

Expertization: with 2000 Greene Foundation certificate.



- 370 ○ **Canada, 1859, Prince Albert, 10c violet (17a).** Exceptionally well centered, light cancel, Very Fine, choice (Photo). **\$160**



- 371 ○ **Canada, 1864, Queen Victoria, 2c rose (20).** Beautifully centered, bright color, unobtrusive cancel, Very Fine (Photo). **\$300**



- 372 (★) **Canada, 1868, Large Queen, 1c brown red (22).** Unused, exceptionally fresh with brilliant color, F.-V.F (Photo). **\$550**



- 373 ○ **Canada, 1868, Large Queen, 1c brown red (22).** Exceptional centering within large margins, lovely color, light Aug 1868 postmark, Extremely Fine, choice (Photo). **\$160**



- 374 ○ **Canada, 1868, Large Queen, 1¢ brown red (22).** Perfectly centered, exceptionally fresh color and paper, unobtrusive Toronto postmark, the "3" in the cancel slightly breaks the paper, totally invisible and trivial, Extremely Fine appearance **(Photo)**. **\$160**

Expertization: **with 2021 P.F. certificate.**



- 375 ★/(★) **Canada, 1868 Large Queens 1¢ yellow orange, 3¢, 12½¢ (23, 25, 28).** 1¢ and 12½¢ disturbed original gum, 3¢ without gum, 1¢ couple nibbed perfs, 3¢ and 12½¢ small closed tear and reperfed, reasonably attractive **(photo)**. **Estimate \$200 - 300**



- 376 ○ **Canada, 1868, Large Queen, 1¢ yellow orange (23).** Very well centered, bold grid cancel, fresh Very Fine **(Photo)**. **\$225**



- 377 ✉ **Canada, 1868, Large Queen, 6¢ dark brown (27).** Very Fine single, tied on small neat cover to Alfred Maine (Shaw correspondence) by Woodstock N.B. duplex, light cover crease at left, F-VF, fresh and attractive cover **(Photo)**. **\$190**



- 378 ★ **Canada, 1877, Small Queen, 10¢ dull rose lilac (40).** Lightly disturbed original gum, lovely color, fresh paper, Very Fine, pretty **(Photo)**. **\$1,600**



- 379 ★★ **Canada, 1888, Small Queen, 6¢ chestnut (43 var).** Original gum never hinged, outstanding centering, post office fresh with prooflike color, simply Superb. Unitrade 43i **(Photo)**. **\$525**



- 380 ★ **Canada, 1897, Small Queen, 10¢ brown red (45).** Original gum light hinge remnant, brilliant color and paper, F.-V.F **(Photo)**. **\$725**



- 381 ★★ **Canada**, 1897, Queen Victoria Jubilee, 1/2¢, 2¢, 8¢ (50, 52, 56). Original gum never hinged, bright and fresh, F.-V.F (Photo). \$692



- 382 ★ **Canada**, 1897, Queen Victoria Jubilee, 1/2¢, 20¢, 50¢ (50, 59, 60). Original gum small hinge remnants, fresh F.-V.F (Photo). \$760

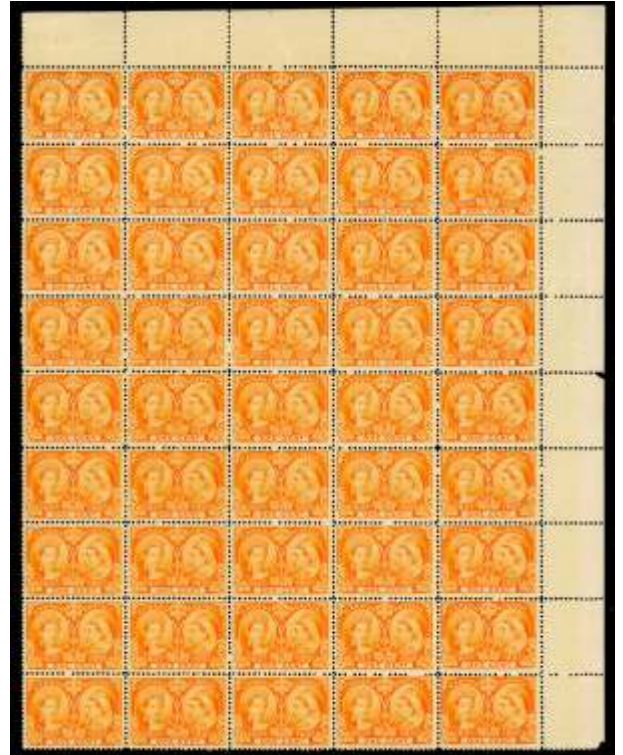


- 383 ★★□ **Canada**, 1897, Queen Victoria Jubilee, 1/2¢ black (50). Bottom margin block of four. Original gum never hinged, small gum skips, fresh intense color, F.-V.F (Photo). \$1,100

Expertization: with 2010 Greene Foundation certificate.



- 384 ★★□ **Canada, 1897, Queen Victoria Jubilee, 1¢ orange (51).** Block of 23. Original gum never hinged, one stamp stain on front, three minor faults, other 18 F.-V.F (Photo). **\$1,725**



- 385 ★★ **Canada, 1897, Queen Victoria Jubilee, 1¢ orange (51).** Part sheet of 45. Original gum never hinged, brilliant color, some selvage separation, F.-V.F. with several Extremely Fine gems (Photo). **\$3,375**



- 386 ★★□ **Canada, 1897, Queen Victoria Jubilee, 2¢ green (52).** Upper left corner block of four. Original gum never hinged (lightly hinged in ungummed part of selvage), bright and fresh, F.-V.F (Photo). **\$370 as singles**



- 387 ★★ **Canada, 1897, Queen Victoria Jubilee, 5¢ deep blue (54).** Part sheet of 40. Original gum never hinged, brilliant color, three stamps (one in top row, one in 5th row, and one in bottom row) have abrasions, three stamps in top row have adherence from other 5¢ on reverse, and several have negligible gum toned specks, but most are F.-V.F (Photo). **\$7,200**



- 388 ★★ **Canada, 1897, Queen Victoria Jubilee, 10¢ brown violet (57).** Bottom lower right corner margin pair. Original gum never hinged, light gum bends, post office fresh, fresh F.-V.F (Photo). **\$850**



- 389 ★ **Canada, 1897, Queen Victoria Jubilee, \$1 lake (61).** Original gum, brilliant color, single slightly nibbed perf at top, F.-V.F (Photo). **\$1,000**



- 390 ○ **Canada, 1897, Queen Victoria Jubilee, \$1 lake (61).** Well centered within large margins, rich color, unobtrusive cancel, Very Fine, choice (Photo). **\$700**



- 391 ★★ **Canada, 1897, Queen Victoria Jubilee, \$2 dark purple (62).** Margin single (crease in selvage only), original gum never hinged, pretty color, F.-V.F (Photo). **\$4,000**

Expertization: with 2010 Greene Foundation certificate.



- 392 ★ **Canada, 1897, Queen Victoria Jubilee, \$2 dark purple (62).** Original gum lightly hinged, excellent centering, pretty color, trivial light corner crease, still Very Fine (Photo). **\$1,400**



- 393 ★ **Canada, 1897, Queen Victoria Jubilee, \$3 yellow bister (63).** Original gum lightly hinged, light gum bend, pristine color and paper, F.-V.F (Photo). **\$1,400**



- 394 ★ **Canada, 1897, Queen Victoria Jubilee, \$4 purple (64).** Original gum large hinge remnant, beautifully centered, bright color, Extremely Fine (Photo). **\$1,400**



- 395 ★ **Canada, 1897, Queen Victoria Jubilee, \$5 olive green (65).** Original gum very lightly hinged, exceptionally fresh with lovely color, F.-V.F (Photo). **\$1,400**



- 396 ○□ **Canada, 1897, Queen Victoria Jubilee, \$5 olive green (65).** Upper left corner margin block of four. Brilliant color, purple Winnipeg c.d.s.s, some hinge reinforcement and a small thin, all in selva, fresh and Fine, scarce multiple (Photo). **\$4,400 + as singles**

Expertization: with 1997 Greene Foundation certificate.



- 397 ★ **Canada, 1897-1903 regular issues, 7&8¢ Maple Leafs, 10¢ Edward (72, 81, 93).** Original gum, fresh and Fine (Photo). **\$925**



- 398 ★ **Canada, 1899, Queen Victoria "Numeral", 5¢ blue on bluish (79).** Original gum light hinge remnant, excellent centering, brilliant rich color, Extremely Fine (Photo). **\$220**



- 399 ★★ **Canada**, 1898, Queen Victoria “Numeral”, 6¢ brown (80). Original gum never hinged, wonderfully well centered, gorgeous color, fresh and choice, an Extremely Fine gem (Photo). \$400



- 400 ★★ **Canada**, 1902, Queen Victoria “Numeral”, 7¢ olive yellow (81). Original gum never hinged, nicely centered within wide margins, rich color, Very Fine (Photo). \$300



- 401 ★ **Canada**, 1898, Queen Victoria “Numeral”, 8¢ orange (82). Original gum, brilliant color, choice Very Fine (Photo). \$375



- 402 ★★ **Canada**, 1903, King Edward VII, 5¢ blue on bluish (91). Original gum never hinged, light natural gum bends, well centered, rich color, Very Fine to Extremely Fine (Photo). \$625



- 403 ★ **Canada**, 1908, King Edward VII, 50¢ purple (95). Original gum hinge remnant, perfectly centered within true jumbo margins, prooflike color and impression on bright paper, Extremely Fine, a simply stunning example of the 50¢ Edward (Photo). \$950



- 404 ○ **Canada**, 1908, King Edward VII, 50¢ purple (95). Perfectly centered, choice color, light cancel, an Extremely Fine gem (Photo). \$175



- 405 ★★ **Canada**, 1908, 7¢ and 10¢ Quebec (100, 101). Original gum never hinged, 7¢ gum skips, 10¢ dull spot on gum, fresh F.-V.F (Photo). \$900



- 406 ★★ **Canada**, 1908, 10¢ Quebec (101). Original gum never hinged, rich color, F.-V.F (Photo). \$500



- 407 ★ **Canada, 1908, 20¢ Quebec (103).**
Original gum lightly hinged, choice centering, Extremely Fine (Photo). **\$250**



- 408 ○ **Canada, 1908, 20¢ Quebec (103).**
Beautifully centered, rich color, sock-on-nose Halifax postmark, Very Fine (Photo). **\$225**



- 409 ★ **Canada, 1912, King George V "Admiral", 5¢ dark blue (111).** Original gum hinge remnant, virtually perfectly centered, brilliant color, Extremely Fine (Photo). **\$175**



- 410 (★) **Canada, 1928, King George V "Scroll" definitives, 1¢ to \$1 complete, imperf vertically (Scott 149d-159b) (149b-159b).** Complete set of pairs, imperf vertically. Well centered, 10¢ small thin, otherwise fresh Very Fine (Photo). **\$2,795**

Expertization: all with 1983 Greene Foundation certificates.



- 411 ★ **Canada, 1929, 50¢ Bluenose and \$1 Parliament (158, 159).** Original gum, 50¢ lightly hinged, \$1 hinge remnant, fresh F.-V.F (Photo). **\$525**



- 412 ★ **Canada, 1959, 5¢ St. Lawrence Seaway, center inverted (387a).** Original gum very lightly hinged, outstanding centering, rich colors, small horizontal gum crease, basically invisible, and in our opinion, the stamp is most likely never hinged with a faint fingerprint, Extremely Fine, gorgeous stamp (Photo). **\$9,500**

Expertization: with 2009 P.F. certificate.



- 413 ★★ **Canada, 1959, 5¢ St. Lawrence Seaway, center inverted (387a).** Lovely fresh color, two creases, otherwise F.-V.F. and quite attractive (Photo). **\$9,500**

Expertization: with 1990 P.F. certificate and 2003 Brandon certificate.



- 414 (★) **Canada, 1959, 5¢ St. Lawrence Seaway, center inverted (387a).** Unused without gum, beautifully centered, rich colors on bright paper, Very Fine to Extremely Fine (Photo). **\$9,500**

Expertization: with 1992 Greene Foundation certificate.



- 415 ★★□ **Canada, 1959, 5¢ St. Lawrence Seaway, center inverted (387a).** Upper right corner margin block of four. Original gum never hinged with none of the usual distractions, exceptionally fresh, F.-V.F (Photo). **\$38,000 as singles**

A FRESH AND FLAWLESS EXAMPLE OF THIS RARE MULTIPLE.

Expertization: with 1983 P.F. certificate.

Provenance: M. Sagar.



- 416 ★★□ **Canada, 1959, 5¢ St. Lawrence Seaway, center inverted (387a).** Block of four. Original gum never hinged, essentially perfectly centered, bright and fresh, vertical perfs a bit weak (not mentioned in certificate), faint almost imaginary fingerprint traces on three (truly trivial and also not mentioned in certificate), still an Extremely Fine example of this rare multiple (Photo). **\$38,000 as singles**

A BEAUTIFUL EXAMPLE OF THIS RARE MULTIPLE, CERTAINLY AMONG THE FINEST CENTERED.

Expertization: with 2009 AIEP certificate.



- 417 ★★□ **Canada, 1959, 5¢ St. Lawrence Seaway, center inverted (387a).** Block of four. Original gum never hinged, beautifully centered, bright fresh colors and paper, lower right stamp small spot of gum missing, lower left stamp trivial gum tone spot (mentioned only for accuracy), Very Fine, a beautiful block of the Seaway invert (Photo). **\$38,000 as singles**

A LOVELY FRESH BLOCK OF FOUR OF THIS RARE AND POPULAR MAJOR ERROR.

Provenance: **Brigham.**



- 418 ○ **Canada, 1959, 5¢ St. Lawrence Seaway, center inverted (387a).** Used, nicely centered, neat light cancel, fresh F.-V.F (Photo). **\$8,000**

Expertization: **with 2009 AIEP certificate.**



- 419 ○ **Canada, 1959, 5¢ St. Lawrence Seaway, center inverted (387a).** Used, exceptionally fresh, lightly cancelled, Fine (Photo). **\$8,000**

Expertization: **with 2011 AIEP certificate.**



- 420 ○ **Canada, 1959, 5¢ St. Lawrence Seaway, center inverted (387a).** Used, bright and fresh, neat cancel, Fine (Photo). **\$8,000**

Expertization: **with 2012 AIEP certificate.**



- 421 ○ **Canada, 1959, 5¢ St. Lawrence Seaway, center inverted (387a).** Used, well centered and fresh, missing a small piece at upper left, not surprising given these inverts were used by non-collectors, Very Fine, a more affordable example of the Seaway invert (Photo). **\$8,000**

Expertization: **with 2000 Greene Foundation certificate.**



- 422  **Canada, 1959, 5¢ St. Lawrence Seaway, center inverted (387a).** Tied on cover to the United States by wavy line cancel, "Ottawa Ontario Canada Sep 8, 1959", stamp is very well centered and fresh with a small tear at lower right, basically unnoticeable, fresh Very Fine usage (Photo). **Unitrade C\$25,000 (\$18,750)**

ONLY 16 INVERTS ARE BELIEVED TO EXIST ON COVER, AND THIS IS THE ONLY CROSS-BORDER USAGE. AN IMPORTANT 20TH CENTURY RARITY.

Expertization: **with 2010 Greene Foundation certificate.**

- 423 ★★ **Canada, 1978, CAPEX souvenir sheet (756a).** 200 souvenir sheets. Original gum never hinged, Very Fine. **\$650**



- 424 ★★ **Canada, 2007, 52c Year of the Pig (2201a).** Sheet of 25, gold foil omitted and missing rainbow foil color on all but 5th vertical row. Original gum never hinged, Very Fine (Photo). **\$1,875**

Expertization: **with 2010 Greene Foundation certificate.**



- 425 (★) **Canada, Registry, 1876, 8¢ dull blue (F3).** Trace of original gum, beautifully centered, Very Fine to Extremely Fine (Photo). **\$600**

CAPE OF GOOD HOPE THROUGH TRINIDAD & TOBAGO



- 426 ○ **Cape of Good Hope**, 1853 "Triangular", Perkins Bacon printing, 1d brick red on bluish paper (1). Large margins, rich color, Very Fine (Photo). \$400



- 427 ○ **Cape of Good Hope**, 1855 "Triangular", Perkins Bacon printing, 4d blue on white paper (4). Square pair. Fresh and choice Very Fine (Photo). \$190



- 428 ○ **Cayman Islands**, 1907, King Edward VII, 1d on 5s salmon & green (19). Fresh and well centered, Very Fine (Photo). \$525



- 429 ○ **Cayman Islands**, 1907-09, King Edward VII, ½d-5s complete (21-28). Complete, 21 couple nibbed perfs, 25 on piece, F.-V.F (Photo). \$288



- 430 ▲ **Cayman Islands**, 1914, King George V, 10s deep green & red on blue green, olive back (44). Tied on small piece with Georgetown 1921 postmark, Very Fine (Photo). \$250



- 431 ○ **Cayman Islands**, 1914, King George V, 10s deep green & red on blue green, olive back (44). Well centered, fresh F.-V.F (Photo). \$250



- 432 ○ **Cayman Islands**, 1932, 10s Assembly Centenary (80). Excellent centering, couple slightly nibbed perfs, Very Fine (Photo). \$475



- 433 ○ **Cayman Islands**, 1935-36, King George V, ¼d-10s complete (85-96). Fresh set, F.-V.F (Photo). \$254



- 434 ○ **Ceylon**, 1857-59, Queen Victoria, 6d purple brown, 5d chestnut, 10d dull vermilion and 2s dull blue, imperf (2, 6, 10, 13). Each with expert repair, rich colors, Very Fine appearance. SG 1, 5, 9, 12 (Photo). \$2,450



- 435 ○ **Cyprus**, 1881, Queen Victoria, 4pi pale olive green, Crown CC watermark (14). Fresh and well centered, Very Fine (Photo). \$325



- 436 ○ **Cyprus**, 1881, Queen Victoria, 6pi olive gray, Crown CC watermark (15). Bright color, well centered, Very Fine (Photo). \$500



- 437 ○ **Cyprus**, 1928, £1 Anniversary of British Rule (123). Fresh and choice, Very Fine (Photo). \$400



- 438 ○ **Falkland Islands**, 1878, Queen Victoria, 1d claret (1). F.-V.F (Photo). \$500



- 439 ○ **Falkland Islands**, 1891, Provisional Bisect, 1/2d on half of 1d red brown (19E). Bright color, F.-V.F (Photo). \$325



- 440 ▲ **Falkland Islands**, 1912, King George V, 1d orange red (31). Tied on piece with "Deception Island Shetlands 4 FEB 1915" (Falkland Island Dependancies), Very Fine (Photo). Estimate \$100 - 150



- 441 ○ **Falkland Islands**, 1916, King George V, 5s to £ (37-40). Choice lot of high values, Very Fine (Photo). \$1,295



- 442 ○ **Falkland Islands**, 1928, South Georgia Provisional, 2½d on 2d purple brown (52). Tied on small piece by well struck "South Georgia 19, Fe 28" cancel, Very Fine (Photo). \$1,400



- 443 ★ **Falkland Islands**, 1938-46, King George VI, ½d-£1 complete (84-96). Complete, original gum lightly hinged, F.-V.F (Photo). \$428



- 444 ○ **Gibraltar**, 1886, "GIBRALTAR" on Bermuda (Queen Victoria), 1s yellow brown (7). Bright color, well centered, Very Fine (Photo). \$400



- 445 ○ **Gibraltar**, 1910, King Edward VII, 2s, 4s and 8s, Multiple Crown CA watermark (60, 62, 63). 1910-11, King Edward VII, 4s and 8s, Multiple Crown CA watermark. Fresh F.-V.F. SG 72/74 (Photo). \$497



- 446 ○ **Gibraltar**, 1908, King Edward VII, 4s deep purple & green, Multiple Crown CA watermark (61). Bright color, neat postmark, slightly nibbed perf, F.-V.F (Photo). \$425



- 447 ○ **Gibraltar**, 1912, King George V, 8s and £1, Multiple Crown CA watermark (74, 75). 1912, King George V, dull purple & black on red, Multiple Crown CA watermark. F.-V.F. SG 84, 85 (Photo). \$405



- 448 ○ **Gibraltar**, 1927, King George V, £1 red orange & black, Multiple Script CA watermark (92). Brilliant color, Very Fine (Photo). \$300



- 449 ○ **Gold Coast, 1902, King Edward VII, 20s purple & black on red (48).** Fresh and Fine (Photo). **\$240**



- 454 ○ **Grenada, 1908, Badge of the Colony, 10s green & red on green (78).** Rich colors, F.-V.F (Photo). **\$300**



- 450 ○ **Grenada, 1863, Queen Victoria, 6d dull rose red, rough perf 14 to 16 (5a).** Horizontal pair. Slight separation, bright color, F.-V.F., scarce multiple of this scarce shade (Photo). **\$550+**



- 455 ★ **Hong Kong, 1884, Queen Victoria, 10c deep blue green (43a).** Original gum hinge remnant, well centered, rich color, trifling rubbing lower right (mentioned only for accuracy), still Very Fine (Photo). **\$1,700**



- 451 ○ **Grenada, 1881, Queen Victoria, 4d blue, perf 14½ (13).** Rich color, pretty blue postmark, Very Fine gem (Photo). **\$210**



- 452 ○ **Grenada, 1883, Queen Victoria, ½d orange & green (14a).** Pair. Fresh, rich color, F.-V.F (Photo). **\$1,500**



- 453 ○ **Grenada, 1902, King Edward VII, 10s green & purple (57).** Fresh Very Fine (Photo). **\$300**



- 456 ★□ **Ireland, 1922-23, 1st Pictorial definitive issue, ½d to 1s complete (65-76).** Margin blocks of four, 10p a block of eight. Original gum lightly hinged, fresh F.-V.F (Photo). **\$606**



- 457 ★ **Ireland, 1935, Free State over-prints on King George V re-engraved "Seahorses", 2s6d to 10s complete (93-95).** Complete, original gum lightly hinged, 10sh plate scratch, fresh set Very Fine (Photo). **\$652**



- 458 ○ **Jamaica, 1920-21, 2s-10s King George V Pictorials (84-87).** High values complete, F.-V.F (Photo). **\$377**



- 459 ✉ **Mafia Island, 1916, India Expeditionary Force Issues surcharged "G.R. Post Mafia" (NL89-95).** Short set on cover front, all with "Mafia Ja 23 1916" double circle c.d.s.s, Peter Holcombe certificate stating "The handstamps are genuine, the cancellations are genuine but have been backdated (probably in 1917) by favour, the address has been added at a later date", all in all a very interesting piece, Very Fine appearing (Photo). **\$2,425 as used**

Expertization: **with 1988 Holcombe certificate.**



- 460 ○ **Montserrat, 1884, Queen Victoria, 4d blue (9).** Fresh, neat cancel, F.-V.F (Photo). **\$300**



- 461 ○ **Montserrat, 1903, King Edward VII, 5s black & scarlet (21).** Fresh F.-V.F (Photo). **\$225**



- 462 ○ **Nevis**, 1883-90, Queen Victoria, 6d green and 1s pale violet (28, 30). Well centered and fresh, 6d nibbed perf, F.-V.F. SG 32, 34 (Photo). \$625



- 463 ○ **New Zealand**, 1856, Queen Victoria "Chalon Head", 2d blue on blue paper (5). Pretty shade, fresh F.-V.F (Photo). \$325



- 464 ○ **New Zealand**, 1857, Queen Victoria "Chalon Head", 6d brown, imperf (9). Clear margins, bright color, Very Fine (Photo). \$325



- 465 ○ **New Zealand**, 1862 Queen Victoria "Chalon Head", 6d black brown on pelure paper, imperf (24). Margins nearly all around, fresh and Fine (Photo). \$400



- 466 ○ **New Zealand**, 1864, Queen Victoria "Chalon Head", 1d carmine vermilion, imperf (27). Rich color, light cancel, Fine. SG 97 (Photo). \$375



- 467 ○ **New Zealand**, 1878, Queen Victoria "Side Face", 5s gray, perf 12 x 11½ (60). Fresh and Fine (Photo). \$500



- 468 ○ **New Zealand**, 1899, Mt. Cook, 5s vermilion, perf 11¼ (98). Rich color, F.-V.F (Photo). \$400



- 469 ○ **Rhodesia**, 1913, King George V "Admiral", £1 black & violet, Head Die II, perf 14 (138). Bright and fresh, F.-V.F (Photo). \$675



- 470 ○ **St. Christopher**, 1890, Queen Victoria, 6d olive brown (15). Well centered, fresh Very Fine (Photo). \$425



- 471 ○ **St. Helena**, 1908, King Edward VII, 10s green & red on green (60). Well centered, Very Fine (Photo). \$325



- 472 ○ **St. Helena**, 1934, 10s Centenary (110). Rich color, light cancel, F.-V.F (Photo). \$350



- 473 ○ **St. Kitts-Nevis**, 1923, 5s Tercentenary of the Colony (63). Choice Extremely Fine (Photo). \$225



- 474 ○ **St. Lucia**, 1891, Queen Victoria, 5s-10s, Die II (38-39). Fresh F.-V.F (Photo). \$350



- 475 ○ **St. Vincent**, 1881, Local Surcharge, 4d on 1s bright vermilion (33). Very Fine for this issue (Photo). \$925

Expertization: signed Brun,.



- 476 ○ **St. Vincent**, 1883, Queen Victoria, 6d bright green (38). Fresh F.-V.F (Photo). \$350



- 477 ○ **St. Vincent**, 1913, 1928 King George V, £1 mauve & black (116, 131). Both fresh and F.-V.F (Photo). \$350



- 478 ○ **Tasmania**, 1853, "Van Diemen's Land", 1d blue, 1st printing (1). Large margins, fresh, minor thin, Very Fine appearance (Photo). \$1,600



- 479 ★ **Trinidad**, 1900, "Britannia", 1d dull purple & rose, type II, oval "O" in "ONE" (77). Original gum lightly hinged, fresh and Fine (Photo). \$400



- 480 ★ **Trinidad**, 1896, "Britannia", 10s green & ultramarine (89). Original gum lightly hinged, bright color, couple negligible perf thins, Very Fine appearance. SG 123 (Photo). \$350



- 481 ★★ **Trinidad**, 1896, "Britannia", £1 green & carmine, ordinary paper (90). Original gum never hinged, fresh and Fine (Photo). \$210 as hinged



- 482 ▲ **Trinidad & Tobago**, 1922, "Britannia" and King George V, £1 green & bright rose (31). Tied on small piece by Port of Spain pmk. F.-V.F (Photo). \$275

Europe, Asia and Latin America

BOLIVIA THROUGH ISRAEL



- 483 ★ **Bolivia**, 1930 1P red brown & black (C23a). Inverted overprint in gold, original gum, fresh, scarce and F.-V.F (Photo). \$1,300

Expertization: C Beltran La Paz handstamp.



- 484 ★ **China**, 1888, Small Dragon, 3ca mauve, clean-cut perf 11½-12 (14). Original gum lightly hinged, bright color, F.-V.F (Photo). \$275




- 485 ★/O **China (People's Republic)**, 1968, Revolutionary Literature and Art (W5) complete (982-990). Complete, two of the May1 issues CTO (988,989). others, original gum never hinged., Very Fine (Photo). \$1,155



- 486 ✉ **Ecuador**, 1865, 1r green (5). Pair, tied on cover to Lima by Guayaquil 3.Nov.66 c.d.s., Lima backstamp. Very Fine cover (Photo).

\$300



- 487  **France, 1912 R.M.S. Titanic.** "TITANIC" straight line handstamp on cover mailed from France to Washington D.C., 25¢ blue sower on reverse tied by indistinct "Sathonay-Camp" as well as a Washington D.C. receiver postmark "March 27, 1912", on the front is a fairly clear strike of the "Sathonay-Camp" postmark March 13, 1912, a blue control number, ms Dossier NO. 5631 written by the sender, and a purple boxed "Received Mar 28, 1912", applied by the addressee, fresh and choice Very Fine (Photo).

Estimate \$2,000 - 3,000

A CHOICE EXAMPLE OF THIS RARE "MISSED THE BOAT" COVER, WHICH IS AMONG THE FINEST OF THE 20 RECORDED EXAMPLES.

This cover, as well as the other 19 recorded examples, had been intended to be on the March 20, 1912 sailing of the Titanic, and was therefore marked with the "TITANIC" handstamp. When the sailing date was changed to April 10, 1912, these covers were placed on the next available ship. For more information about these covers and the census, see www.titaniccovers.com.

- 488 ★★ **Germany, 1935 costumes (B69-78).** Original gum never hinged, eight complete sheets, fresh F.-V.F. **\$1,280**



- 489  **Germany, Airmail, 1930, 2m-4m So. America Flight Zeppelins complete (C38-C39).** Very Fine singles, tied on cover or card by Friedrichshafen 18.5.30 c.d.s.s, each cover with very attractive "Klotzbach" private cachet, appropriate red German Flight cachets and receivers, a remarkable and choice set of covers, Extremely Fine (Photo). **\$750**



- 490 ★ **Germany, Airmail, 1933, 1m Chicago Flight Zeppelin (C43).** Original gum, bit of acetate shine from mount, bright and fresh, Very Fine. Michel 496 (Photo). **\$800**



- 491 ★★ **Germany**, 1933 Chicago Flight 2M and 4M (C44-C45). Original gum never hinged, 4M tiny natural gum inclusion, fresh Very Fine (Photo).
\$500

Expertization: with 2019 P.F. certificates.



- 492 ★★ **Indonesia**, Riau Archipelago, 1954, First overprints, 5s-25r complete (1-22). Usual tropical/lightly toned original gum never hinged, fresh F.-V.F (Photo).
\$903



- 493 ★★ **Indonesia**, 1950 RIS overprints (335-358). Original gum never hinged, F.-V.F (Photo).
\$723



- 494 ✉ **Israel**, 1948 First Coins complete (1-9). On unaddressed cacheted FDC, cover bend at far left, but stamps are fresh and very well centered, Very Fine (Photo).
Estimate \$75 - 100



- 495 ✉ **Israel**, 1948 New Year complete (10-14). Tab singles on FDC "Haifa 26.9.1948". Expertization with 2019 P.F. certificate.
\$407 (Photo)



- 496 ★★ **Israel**, 1950 First Airmail complete (C1-C6). Tab singles. Original gum never hinged, fresh F.-V.F (Photo).
\$250

ITALY



- 497 ★ **Italy**, 1889, Humbert I, 45c gray green (54). Original gum hinge remnant, attractive centering for this, fresh color, Fine (Photo).
\$2,350



- 498 ★ **Italy**, 1901, Victor Emmanuel III, 40c brown (83, 85). Original gum, fresh and Fine (Photo).
\$1,570



- 499 ★★ **Italy**, 1923, 50c Manzoni (168). Original gum never hinged, pristine, Very Fine (Photo).
\$360



- 500 ★★ **Italy**, 1930, Virgil complete (248-256, C23-C26). Original gum never hinged, C26 trivial, tiny gum toned speck, nice fresh set F.-V.F (Photo).
\$835



- 501 ★★ **Italy**, 1932, Dante Alighieri Society regular issues complete (268-279, C34). Original gum never hinged, F.-V.F (Photo).
\$460



- 502 ★★ **Italy**, 1934, World Soccer Championship complete (324-328, C62-C65). Original gum never hinged, F.-V.F (Photo).
\$625



- 503 ★★ **Italy**, 1934, World Soccer Championship complete (324-328). Original gum never hinged, F.-V.F (Photo).
\$330



- 504 ○ **Italy**, 1934, Military Medal of Valor regular issues complete (331-341). Fresh set, F.-V.F (Photo). \$421



- 505 ★★ **Italy**, 1935, Aeronautical Salon at Milan complete (345-348). Original gum never hinged, fresh F.-V.F (Photo). \$830



- 506 ★★ **Italy**, 1935, Bellini regular issues complete (349-354). Original gum never hinged, 1.75+1 tiny natural gum inclusion, Very Fine (Photo). \$510



- 507 ★★ **Italy**, 1946, 100L Carmine, United Family and Scales, perf 14 (477). Original gum never hinged, F.-V.F (Photo). \$400



- 508 (★) **Italy**, Postage Due, 1870, 1L, 3L light blue & brown (J13, J15). Unused, fresh and Fine (Photo). \$2,100



- 509 ★★ **Italy**, Postage Due 1884,1903 issues (J21-J24). Original gum never hinged, fresh and Fine (Photo). \$865



- 510 ★ **Italy**, Postage Dues, 1890-91, 10c-30c surcharges complete (J25-J27). Original gum hinge remnant, bright color, Fine (Photo). \$2,655

Expertization: signed,.



- 511 ★ **Italy**, Parcel Post, 1884-86, 10c-1.75L complete (Q1-Q6). Original gum hinge remnant, F.-V.F (Photo). \$448



- 512 ★★ **Italy, Parcel Post, 1948, 300L brown Carmine (Q74).** Original gum never hinged, well centered, fresh Very Fine. (approximate cat for NH 1,050). Cat as hinged (Photo).
\$550



- 513 ★★ **Italy, Parcel Post 1954 1000L Ultramarine (Q76).** Original gum never hinged, fresh and Very Fine, pro-rated catalogue value of never hinged (Photo).
\$3,500



- 514 ★★ **Italy, Parcel Post Authorized Delivery 1953 (QY1-QY4).** Original gum never hinged, F.-V.F (Photo).
\$400



- 515 ★★ **Italy, Parcel Post Authorized Delivery 1956-1958 (QY5-QY11).** Original gum never hinged, F.-V.F (Photo).
\$662



- 516 ★ **Italy, 1924 Franchise Stamps, Group of 20 different.** Values 5c to 1L including Sassone 5-9, 17-22 & 70-75, all bright and fresh. O.g., F.-V.F (Photo).
Sassone €11 (\$660)



- 517 P **Italian Social Republic, 1944, Unissued Mazzini & Garibaldi set.** A compound proof sheet containing a block of 4 of each value (light vertical wrinkle), plus a separate set of blocks cut from the same sheet. Without gum as issued, Very Fine (Photo).
Unificato €1,200 (\$1,300)



- 518 ★★ **Italian Social Republic, 1944-45, "G. N. R." overprints, 25 different.** Comprises Sassone 470/I-475/I, 477/I-479/I, Airmails 117/I, 119/I & 121/I, and Special Delivery 19/II. O.g., never hinged (photo). **Sassone €1,370 (\$1,480)**



- 519 ★★ **Trieste Zone A, 1948 Airmail 1000L (C16).** Original gum never hinged, unusually well centered, Extremely Fine (Photo). **\$275**



- 520 ★★ **Trieste Zone A, 1947-1948, 200L, 300L, 500L (Q10-14).** Original gum never hinged 300L (unidentified B/S), F.-V.F (Photo). **\$1,125**



- 521 ★ **Italian Occupation of the Aegean Islands, 1934, World Cup Soccer (31-35).** Original gum lightly hinged, F.-V.F (Photo). **\$690**



- 522 ★★ **Italian Occupation of the Aegean Islands, 1932 Garibaldi Issue (C15-19).** Original gum never hinged, C15 tiny spot of disturbed original gum, C19 small toned spot, fresh F.-V.F (Photo). **\$750**



- 523 ★ **Italian Occupation of the Aegean Islands, 1933 Graf Zeppelin (C20-25).** Original gum hinge remnant, F.-V.F (Photo). **\$570**



- 524 ★★ **Italian Occupation of the Aegean Islands, 1933 Balbo Flight (C26-27).** Original gum never hinged, post office fresh, Very Fine (Photo). **\$300**



- 525 ★★ **Italian Occupation of the Aegean Islands, 1932 Airmail Special Delivery (CE1-2).** Original gum never hinged, Very Fine (Photo). **\$480**

KOREA THROUGH VATICAN



- 526 ★★ **Korea (South), 1957, New Year souvenir sheet (265a-267a).** Complete, first almost invisible lightly hinged, others never hinged, Very Fine (Photo). **\$3,300**



- 527 ✉ **Latvia, Africa Flight Cover, 1933 10s-100s on 25s (C9-13).** Complete set on specially prepared flight cover to Germany, all tied by pictorial "Riga Lidpasts Latvija" 28.5.3 cancels, Berlin receive and back stamp, Very Fine and quite scarce cover (Photo). **\$1,290 as off cover singles**



- 528 ★ **Libya, 1912-22, 5L blue & rose (14).** Original gum light hinge remnant, rich colors, fresh F.-V.F (Photo). **\$425**



- 529 ★ **Netherlands East Indies, 1870-1888, 1c-2.50G (4-6, 9-10, 13-16).** Original gum hinge remnant, bright and fresh, F.-V.F (Photo). **\$438**



- 530 ★★/★ **Netherlands East Indies, 1905-1912 1G/22G (59, 61-62).** Original gum, first never hinged others hinge remnants, F.-V.F (Photo). **\$262**



- 531 ★★ **Netherlands East Indies, 1941, Queen Wilhelmina, 10c to 25g (234-249).** Original gum never hinged, 25G gum bends (photo). **\$981 + (as hinged)**



- 532 ★ **Netherlands East Indies, 1921 Marine Insurance (GY1-GY7).** Original gum lightly hinged, fresh F.-V.F (Photo). **\$300**



- 533 ★★ **Ryukyu, 1952, "Kai Tei" (revalued) surcharge on Shuri Castle, 100y on 2y rose violet (17).** Original gum never hinged, well centered, bright color and paper, trivial microscopic paper flaw in one perf, fresh Very Fine (Photo). **\$2,000**

Expertization: **signed Black.**



- 534 ★★ **San Marino, Airmail, 1950, Pictorials, 2L-500L complete (C63-71).** Complete, original gum never hinged, F.-V.F (Photo). **\$425**



- 535 ★★ **Sweden, 1918, 55ö pale blue "Värnamo" issue (90).** Original gum never hinged, fresh color, F.-V.F., scarce and seldom seen in never hinged condition, missing from most collections (Photo). **\$2,100 as hinged**

Expertization: **with 1979 Franz Obermuller certificate.**



- 536 ★★ **Sweden**, 1918, 80ö black "Värnamo" issue (92). Original gum never hinged, well centered with deep rich color, Very Fine, quite scarce in never hinged condition, missing from most collections, a truly remarkable stamp (Photo). \$2,100 as hinged

Expertization: with 1979 Franz Obermuller certificate.



- 538 ★ **Vatican**, 1934, 40c-3.70L Provisional Surcharges complete (35-40). Complete, fresh and mostly very well centered, original gum, some small hinge remnants, overall Very Fine (Photo). \$1,520

Expertization: signed Dienna,.



- 537 ✉ **Switzerland**, 1922, Pro Juventute complete (B21-B24). All tied on immaculate registered First Day Cover by individual "Conference Pour La Pax En Orient" 12.1.23 c.d.s.s (Photo). \$1,650



- 539 ★★ **Vatican**, Airmail, 1948 Archangel & Tobias complete (C16-C17). Original gum never hinged, well centered set, fresh Very Fine (Photo). \$640



- 540 ★★ **Vatican**, Airmail, 1948 Archangel & Tobias complete (C16-C17). Original gum never hinged, F.-V.F (Photo). \$640



- 541  **Vatican, Airmail, 1948 Archangel & Tobias complete (C16-C17).** Complete set on flown cacheted F.D.C., tied by one of two "Citta Del Vaticano 28/12/48 Posta Area" postmarks, backstamped "Roma Ferrovia 5/1/49", F-VF, scarce FDC (Photo). **Estimate \$300 - 400**



- 543 ★★ **Vatican, Airmail, 1951 Gratianus complete (C20-C21).** Original gum never hinged, fresh Very Fine. Sassone S.504 (Photo). **\$395**



- 542 ○ **Vatican, 1949, 1951 Air Mails (C18-21).** Complete set of each on unaddressed cacheted First Day Covers, Very Fine (Photo). **Estimate \$200 - 300**

Collections & Accumulations

U.S. Collections



544 ★/○ Old Time collection, 1850s-1970.

In three albums, few nicer used earlies, then some decent mint Washington-Franklins, complete sets 1922 issue, Kansas-Nebraska, Prexies, and Liberty issue, mint commems are complete less 242-245, 292-293, 400A, 404, mint back of book includes Airs complete less Zeppelins, E3, E5-9, Q1-12, JQ1-5, etc., quality a bit mixed on earlies but improves quite a bit after 1908, with plenty F-VF (and even a few VF, XF) **(Photo)**.

Estimate \$1,500 - 2,000

545 ★/○ Collection, 1850s-1950s. Several 100 in an "All American" album, condition is mostly quite poor-fair but every now and then there is a salvageable item, including mint/used 230-40, 285-89, 293, 294-99, RW1, used 291-92, etc **(Photo on web site)**. **Estimate \$500 - 750**



546 ★/○ Collector's Accumulation, generally 1851-1898. Over 150 stamps, plus some multiples, loaded with better items including mint or unused: 7, 9 (pair), 11 (margin block), 78, 97, 114 (block), 209 (block), 241, 262, 263, 278, 505, including used: 9 (5), 10, 22, 25, 28-29, 31-35, 76-78, 100, 118, 242, 292, etc. In addition, there are some nicer cancellations, naturally flaws are to be expected but most are relatively minor, these stamps were chosen for appearance, and there are some F-VF. All in all, a lovely group filled with very saleable stamps. Rough Cat approximately, \$35,000 **(Photo)**. **Estimate \$4,000 - 5,000**



547 ○ Collector's Accumulation, 1851-1898. Couple hundred stamps on black cards, generally up to 1-3 of each, duplication is often due to cancels, condition mixed, faults mostly minor or small to fine, a few unused here and there, including some original gum and even a never hinged surprise or two. See photos for a sampling. Catalogue value should be \$10,000-\$12,000 **(Photo)**. **Estimate \$1,000 - 1,500**

- 548** ★/○ **Good Starter Collection in three Scott albums, 1851-1960.** Including used 136, 217, 276, 285-290, 323-30, 341-2, plenty of Washington-Franklins, C1-3, including mint 614-19, 620-21 (blocks), 647-48 (blocks), 830-31, 833(plate blocks), etc., plus a nice little selection of Postage Dues and Revenues in a second album, and a good start on cut squares in a third, condition on the used is typical mixed, mint overall appears to be original gum F-VF, quite decent beginning collection. **Estimate \$200 - 300**

- 549** ○ **Stockbook, 1860s-1970s.** Many 100s, plenty of stamps in the \$5-\$50 catalogue range, small faults to Very Fine **(Photo on web site).** **Estimate \$200 - 300**



- 550** ★/(★) **Small accumulation of better items, generally 1860s-1915.** Over 80 stamps plus a few multiples, some regummed, many disturbed original gum, with a few original gum (even a couple never hinged in the later period), includes 14,29,30 (2), 37-38, 68, 72, 76(2),78, 85B, 85E(these "Z" grills are possibly ok, sold as is), 187-188, 208, 217-18, 220a, 220c, 228-229 (2), 240 (4), 241 (4), 242 243-244. 245(2), 261A(2), 276, 293,310-11, 340 (plate block), 369, 400 (3), E1 (2), 3 (3), very mixed condition, a few of the early unused may be cleaned (probably not) but mostly quite saleable **(Photo).** **Estimate \$5,000 - 7,500**



- 551** ★★/★ **1923, 2¢ Harding, the 3 major perf types accumulation** comprised of #610 over 250, mostly in blocks, plus about 30 plate blocks; 611, 15 blocks including positions and a never hinged top plate number and Shermack Type III, pairs and a line strip of four; 612, 3 blocks plus a few, some never hinged, some flaws, mostly Fine or better **(Photo).** **Estimate \$400 - 500**



- 552** ★/○/✉ **1923, 2¢ Harding** small group of stamps and covers, including shades of 610, a dozen used blocks of 611, plus one signed by Harding's Attorney General, Daugherty, one that might be Hoover (indistinct), mourning stationery from the State Department and a mourning First Day Cover from the Postmaster General, a couple of unofficial bisect usages, etc **(Photo).** **Estimate \$300 - 400**

- 553** ○ **United States and British Collector's Stock.** Many 100s, used on stock pages, here and there a better item plus a little nicer British **(Photo on web site).** **Estimate \$150 - 200**

U.S. Assortments



- 554** ○/✉ **5¢ 1847 lot.** Comprised two singles, one with red cancel, small faults, other sound with pen and blue "Paid" cancels, plus a single on cover tied by blue Philadelphia "Paid" in lozenge cancel, file fold through stamp, attractive group with three P.S.E. certificates, stamps graded G-VG 40 **(Photo).** **Estimate \$200 - 300**



- 555** ○ **Regular issues, 1852//1903.** Twenty different, including 17, 67 (red cancel), 69-70, 86, 89-90, etc., small or minor faults but quite attractive and saleable **(Photo).** **approximately \$3,600**



- 556** ○ **1852, 3¢ dull red Scott 11, 11A** forty singles and a pair, includes some plated, examples of reliefs, shades, some nicer cancels including two green and a Railroad, probably some minor flaws but generally Fine or better and quite fresh, an excellent start on a study of the 3¢ imperf **(Photo).** **Estimate \$150 - 200**



- 557 ○ 1857-1961 3¢ Type I, IA, II, IIa clean little group comprised 25 (4), 25A, 26 (26), 26a (4), including shades and cancels, few perf flaws and most likely a few small faults, but looks mostly F-VF and quite nice (Photo). **\$2,300+**



- 558 ○ 19th Century Used. 10 different, most with flaws, mostly quite minor, comprised 9, 24, 35, 63, 73, 113, 116, 135, CSA 1, a most attractive lot (Photo). **\$750 (approximately)**



- 559 ★★/★/○ Small balance of consignment. 5 items comprised used 276, mint never hinged 250 (bit of offset on reverse), 281, 286, 537 (P.F. certificate), F-VF (Photo). **Estimate \$100 - 150**



- 560 ○ 19th century used graded lot, 136//289. 15 different, all with graded P.S.E. certificates, comprised: 136 (80), 148 (85), 160 (80), 183 (85), 185 (80), 186 (80), 211 (80J), 224 (75J), 225 (80J), 248 (75J), 252 (85), 269 (85), 280b (85), 287 (85), 289 (80), couple minor flaws that apparently affected the grade, overall a VF or better lot used 19th century which can be quite elusive in better grades. SMQ \$673 (Photo). **Estimate \$300 - 400**



- 561 (★) Unused Officials, O3//O118. 20 different, including O3, O30, O40, O52 (original gum), O53, O59, O62, O76, O82, O90 (original gum), O102, many with flaws, mostly trivial, couple reperfs, but overall fresh, very well centered, a most attractive group of Officials. Cat. over \$1,500 (Photo). **Estimate \$300 - 400**



- 562 ○ **Used Officials, O3//O116.** 18 different plus two duplicates, including O29, O41, O61, O95 (trivial thin speck), few trifling flaws, mostly F-VF, premium group (Photo).

Estimate \$100 - 150



- 564 ★★ **Select Never Hinged Lot, 1898-1956.** 13 stamps and a pair, comprised 279, 320, 347, 417, 434, 535 pair, 556, 561, 566, 568, 700, 1053, C4, C12, original gum never hinged, fresh, mostly quite well centered, Very Fine (Photo). \$635



- 565 ★/○ **Balance of Consignment.** Ten items, the unused have original gum except 112, the 515(b) has very faint blind perfs, most with small faults or reperfed but fresh and attractive lot (Photo). Estimate \$150 - 200



- 563 ★ **Early regular issues group, 1890-1903.** 18 different, original gum with old hinge remnants, some minor faults, some fine, all useful (Photo). \$1,395



- 566 ★ Mint Lot, 1901/1923.** Comprised 296, 303, 335, 378-9, 407, 414, 417, 464, 507, 529a (PSE cert), C5, original gum, few hinge remnants, most lightly hinged, fresh lot, F-VF **(Photo)**.
\$515 (approximately)



- 567 ★★/★ 1908-1912 booklet panes.** Seven, comprised 331a, 332a, 374a, 375a (two, one with plate number), 405b, 406a, original gum, three never hinged, couple with perf a little weak but intact, 375a with plate number (several perfs rejoined), fresh lot, F.-V.F **(Photo)**.
\$1,130



- 568 ★ 1912-1917 booklet panes of six 5** different, comprised 405b, 406a (with plate number), 463a, 501b, 502b, original gum, F.-V.F **(Photo)**.
\$390



- 569 ★ Washington-Franklin issues (334//541).** 41 different, original gum most with old hinge remnants, taken from an old-time album, few negligible flaws but mostly well centered, fresh F.-V.F. lot **(Photo)**. **\$2,700 approximately**

- 570 ★★/★ 1932, Washington Bicentennial complete (704-715).** Dealer's stock of hinged and never hinged singles, varying quantities, generally 25-100 of each plus some plate blocks, virtually all F-VF. **\$1,400**

- 571 Group of Carrier and Local Issues— Reprints or Forgeries.** All in multiples, generally Very Fine **(Photo on web site)**. **Estimate \$100 - 150**



- 572 ★ Early commem group.** 10 different, original gum hinge remnants, few minor flaws, otherwise fresh and Fine **(Photo)**. **\$860**



- 573 ★★/★ Modern Error Lot.** Comprised 807, two sheets of 100 and 1393 sheet of 100 misperfed, 1083 and 1165 blocks of 20 with color streak; 1384 Baltimore pre-cancel with overprint shift, 1426 block of six misperfed, original gum never hinged (couple stamps hinged) **(Photo)**. **Estimate \$100 - 150**

U.S. Specialized Collections

- 574 ★★ **Airmail Booklet Lot.** BKC3//23, 19 booklets, mostly different including BKC4 (2), BKC5 (2), BKC6, etc., appears to be all original gum never hinged, F-VF. **\$538**

- 575 ★ **Cigar and Snuff Tax Paid.** Series 123-125 cpl collections neatly mounted in two albums, 157 different cigars, and 66 different snuff, without gum as issued. F.-V.F.

Estimate \$100 - 150



- 576 ★★ **Collection of Complete Unexploded Booklet Panes, 1914-1960s.** Over 40 booklets, mostly pre-1940, virtually all different, while there is sure to be a creased cover or two, or a minor fault, looks to be almost all F-VF (Photo).

\$2,400+

- 577 ★ **Commem collection of over 100 plate blocks, 1923-1944.** Including 2¢ reds 704-15, 859-93, 909-21, etc., original gum some never hinged, few faults, generally F-VF. Cat. approximately \$1,100. **Estimate \$150 - 200**

- 578 ○ **Hunting Permit stamps.** Small dealer stock RW6/RW58, about 100 stamps, generally 1-5 of each, including a few unused, mixed condition but mostly serviceable.

\$1,400 approximately



- 579 ★★ **Michigan State Revenues.** 1977 Public Access stamps, 10 sheets of 10, 1976 and 1977 Trout and Salmon stamp 15 sheets of 10 of each, Very Fine (Photo). **\$4,000**

- 580 ★ **Minnesota Duck Prints.** 10 different, 7, 8, 10-14, 16-18, by the following artists: G. Moss, J. Gross, B. Jarvi (?), R. Von Gilder (?), R. Hautman, J. Hautman, K. Daniels, R. Hautman, P. Scholer, E. Durose, Very Fine in original folders. Retail \$1,874. **Estimate \$300 - 400**

- 581 ★/○ **Modern postal cards, 1996-2008 (UX261a/UX553a).** In original USPS packaging, all sealed but one, 10 different plus four duplicates, two are with First Day cancels. **\$405**

- 582 ★★/★ **Plate Block Collection, generally 1920-1940.** Mounted in three albums, including 343, 534, 548-549, 557, 614-615, 617-18, 631-42, 2¢ reds appear complete, 704-15, 740-49, 756-65, 833 (3), 859-93, C7-12, C19-24, etc., few scattered flaws but largely F-VF, most never hinged (checked the best and reduced cat value a bit for any missed hinged), clean collection. **\$5,500 approximately**

- 583 ★ **Railroad topical.** Many 100s of Railroad/Train ephemera, including 100s of vintage ads (appears to be mostly 1950s and 1960s) in five large (heavy) binders, few hundred small cards, mostly in sets including cigarette cards, plus photos, picture postcards, tickets, coupons, additionally there are several hundred RR topical stamps in a stock book, 100s more in envelopes, including mint sets, FDCs, etc., should be quite entertaining for the RR aficionado or Ebay seller.

Estimate \$300 - 400

- 584** ○ **Revenues on documents.** An accumulation of over 1,000 pieces, mostly cancelled checks, including a few hundred 1860s-1870s, several hundred 1880s-1900, including over 300 with Battleship revenues, some revenue stamped paper, perhaps 100 store receipts with revenues, mostly 19th century plus approximately 30 old photos with revenues, while there is quite a bit of duplication, there is also a good variety.

Estimate \$300 - 400

- 585** ★ **West Virginia State Tax.** W17, 19, Wine mark-up paid, 25.6 and 32, 5 sheets of 100 of each.

\$6,500 as singles

U.S. Face Value Lots

- 586** ★★ **Collection of Sheets, 1930s-1950s.** Includes 909-21 (plus "Korpa" variety, almost all Very Fine), some Airs, etc. original gum never hinged. Face value \$330 (about \$60 face stuck).

Estimate \$150 - 200

- 587** ★★ **Regular Issue Multiples Collection, 1960s-1980s.** Quite comprehensive including blocks, plate blocks, good showing of coil line strips including PNCs, also includes Airmails (coil line strips cpl) C46 plate block, blocks from the 1940s (including 909-21, name blocks), clean F-VF, never hinged, face over \$275.

Estimate \$200 - 300

- 588** ★★ **Mint Accumulation, Generally 1970s-early 2000s.** Comprised mostly of plate number strips, coils, and some sheets, clean, F-VF, original gum never hinged, in seven albums, face approximately \$1,500.

Estimate \$750 - 1,000

- 589** ★★ **Complete Sheets, Generally 1970s-1990s.** Many se-tenants including several Birds and Flowers, 50 state flags, numerous sheets of 20, Very Fine, original gum never hinged, face approximately \$700.

Estimate \$400 - 500

- 590** ★★□ **Face Lot.** About half of the value is in plate number blocks and strips, from the 1970s (small number, perhaps 10% have some sticking), plus two plate block albums from the 1940s. The other half is a group of over 150 sheets (including small number of part sheets) mostly Commems, including 790-94, 909-921 less 912, but includes "Korpa error". Total face value over \$700.

Estimate \$400 - 500

- 591** ★★ **Comprehensive Collection, 1976-2005.** Appears to be mostly or virtually complete for the period in singles, se-tenants in multiples, coils in pairs and strips, including PNCs, booklet panes, starting in early 1990s, many are also in complete sheets of 10-50 as issued, or complete booklets, all neatly mounted in three Scott albums, F-VF, original gum never hinged throughout, face value approximately \$1,500.

Estimate \$750 - 1,000

- 592** ★★ **Complete Booklet Lot, 1978-1992.** Approximately 60 different, 1-3 of each, including BK132 (2), BK140B, BK148-149 (2), BK159, etc., original gum never hinged, F-VF. Face value over \$500.

Estimate \$300 - 400

- 593** ★★ **Group of Complete Sheets, Mostly 1980s-1990s.** Sheets of 15-50, duplication, Very Fine, original gum never hinged, face approximately \$1,175.

Estimate \$750 - 1,000

- 594** ★★ **Complete Sheets, Mostly 1980s-1990s.** In USPS wrapping, including several each, Birds and Flowers, 1987 Wildlife, about a dozen "Celebrate the Century," etc. Very Fine, original gum never hinged, face \$340.

Estimate \$200 - 300

- 595** ★★ **Face Value Lot.** Some earlier, especially 3¢-5¢ plate blocks in albums, some USPS commem year sets, but mostly 1990s including loads of booklets and panes, plate number strips, etc., also some postal stationery. Face value approximately \$1,500.

Estimate \$750 - 1,000

- 596** ★★ **United States Collection.** Collector's accumulation of 100s, 1980-2000, generally in strips of 6-50, original gum never hinged, F-VF. Face about \$190.

Estimate \$100 - 150



- 597** ★ **Philippines, Eleven Different Early Overprints (213//235).** Original gum hinge remnants, mostly quite well centered and very fresh, F.-V.F (Photo).

\$450

FOREIGN COUNTRY COLLECTIONS

- 598 ○ **Great Britain and Colonies, substantial used collection, 1840-1990s.** In two Scott albums formed decades ago, includes a small amount of mint, loaded with better singles and sets, better Colonies include Great Britain itself, Ceylon, Cyprus, Gibraltar, Hong Kong, Cape of Good Hope, St. Helena; better British America includes Bahamas, Barbados, Bermuda, Canada, Newfoundland, St. Vincent, etc., while there are faults, especially in the earlies, these were chosen for appearance, faults are mostly quite minor and plenty of premium F-VF examples, a lovely clean collection of scarcer used stamps, rough Cat. value \$80,000+, revenue cancels not counted **(Photo on web site)**. **Estimate \$7,500 - 10,000**
- 599 ★/○ **Bermuda, 1865-1940.** Couple hundred stamps bought as several collections, including shades, varieties, some high values, appears to be quite nice quality throughout, cat approximately \$3,700 **(Photo on web site)**. **Estimate \$500 - 750**
- 600 ★/○ **Bermuda, Small Collector's Accumulation.** In glassines and album pages, including mint 9 (2 blocks), 55-69 (2), 105-14 (3), a few mint with a little gum toning, generally F-VF **(Photo on web site)**. **Estimate \$150 - 200**
- 601 ★ **Bermuda, Collection/Accumulation.** Generally 1960s-1970s, including singles, blocks, plate blocks, gutter strips, and full sheets, plus a few First Day Covers, including blocks: 255-271, 323-328, 363-79, gutter strips of 10: 634-637, sheets of 25, just a little curling, but almost all original gum never hinged, Very Fine. **\$3,300 (approximately)**



- 602 ★/○ **Bermuda, 1938-53, King George VI, Group of 37 "key plate" high values (123//128).** Nearly all mint, sorted and identified by both Scott & Gibbons numbers; highlights include S.G. numbers (mint, LH unless noted), 116 (2, one regummed), 116f (used), 117, 117a (used), 118, 118d, 118e (4, one NH), 119a (2), 119c (3), 120a, 120e, 121 (regummed), 121 (used), 121c (3 NH & 121d (NH); virtually all clean and F-VF. SG 116//121d **(Photo)**. **\$2,000+**



- 603 ★/○ **British America, Collection.** No Canada, 100s on Scott pages, generally to 1950, strength in Bermuda, British Guiana, Falkland Islands, and Grenada, appears to be complete for George V Silver Jubilees and 1948 Silver Weddings for each of the 20 or so colonies represented, condition a bit mixed on earlies, but generally F-VF, original gum on the mint, very clean and useful **(Photo)**. **\$6,000 approximately**

- 604 ★ **British Commonwealth, Collector's accumulation of many hundreds, generally 1930-1960s.** Plenty of complete sets, many in the \$25-\$75 range with strength in Australia and Great Britain, also includes couple \$100 Canadian face, some FDCs, and some miscellaneous U.S. and worldwide. **Estimate \$400 - 500**



- 605 ★ **Canadian Provinces: Newfoundland, Imperf Lot.** Consisting of 190a pair, 191b block (one pair never hinged), 195a pair, plus 25TC (black), Very Fine (Photo). **Estimate \$150 - 200**



- 606 ★/○ **Canada, Balance of consignment.** A lovely group of highly useful material, with real strength in the Jubilees, including multiples, a few never hinged, a few disturbed original gum, high values include a \$3 which appears to be sound, few proofs, etc. Also includes some better used earlies such as 4 (6 plus a 4d pair), 5b on cover (may not belong), 7, margins in but sound and with certificate. Overall, some flaws, mostly quite minor, most mint with original gum with some never hinged. An attractive and very saleable group. with 11 Green Foundation certificates (Photo). **Estimate \$1,500 - 2,000**



- 607 ★/○ **Canada, Mint and used collection, 1852-1998.** In four Lindner hingless albums, the mint are in the plastic overlay sheets and the used are hinged in the pages, used highlights include 7, 17-19, 21-30, 34-47, 50-65 (less 55), appears to be basically complete 1897-1998 (back of book is not complete), mint/unused highlights include 14, 15, 17, 18, 50-58, 60-61, 66-73 and appears to be basically complete 1950s-1998 (again, back of book not complete), condition is quite mixed on the earlies but there are some F-VF (Photo). **Estimate \$1,000 - 1,500**

- 608 ★ **Canada, 1870-1970.** Includes a few used and Newfoundland, includes some better 19th century, Admirals complete, 1930-1970 basically complete, back of book (Airs, Special Delivery, Dues, Officials) essentially complete, condition quite mixed on earlies, generally F-VF, thereafter, includes some never hinged surprises (Photo on web site). **Estimate \$750 - 1,000**



- 609 ★ **Canada, Mint Collection, generally 1890s-1950s.** Approximately 150 stamps on Scott pages, including 111, 211-227, 231-273 (less 259), etc., appears to be virtually all original gum F-VF (Photo). **\$2,000 approximately**



- 610 ★ **Canada, Collection, 1903//1943.** Fairly complete for the period, generally with original gum some hinge remnants including 111, 116, 122, 158, basically complete 1930-1943, condition mixed, but most of the better with relatively minor faults (Photo). **\$3,000**

- 611 ★★ **Canada, Modern error lot, 1974-2007.** Comprised 605 var. block of 18 imperf between with score lines, 1360 color shift (2000 Green Foundation certificate double print), 1395 imperf pair, 2201a single and block of four missing gold, and partially missing rainbow (both with Green Foundation certificates), original gum never hinged, Very Fine group. **Estimate \$200 - 300**



- 612 ○ **Canada, Selection, 1852-1908.** 10 stamps with small faults, mostly quite minor, chosen for outstanding appearance, a most attractive group (Photo). **Estimate \$150 - 200**



- 613 ★/(★) **Canada, 19th Century unused selection.** 10 stamps, few with original gum, most with minor faults but selected for choice appearance (photo). **Estimate \$200 - 300**



- 614 ○ **Canada, used 19th century selection.** 10 stamps with generally very minor faults, all quite attractive (Photo). **Estimate \$75 - 100**



- 615 ★★ **Canada, Select Group, 1897-1950.** 27 stamps plus a pair, almost all different, original gum never hinged, including Admirals, Special Delivery, etc. F-VF, fresh premium lot (Photo). **\$1,300 approximately**



- 616 ★ **Canada, Select Mint Lot, 1900-1930.** 14 stamps and four coil pairs, original gum. Fresh F.-V.F (Photo). **\$900**



- 617 ★★ **Canada, 1900-1927 Never Hinged Lot.** Six stamps plus two pairs, original gum never hinged, all bright and fresh and well centered, Very Fine (Photo). **\$375**

- 618 ★★ **Canada, Admiral Issue Booklet Panes.** Six different, original gum never hinged, four have mostly minor gum blemishes (1¢ and 2¢ greens are unblemished), fresh and well centered, F.-V.F. **\$735**



- 619 ★ **Canada, George V&VI Coil Pairs.** Eight different, original gum never hinged. F.-V.F (Photo). **\$393**

- 620 ★/○ **German Area, Collection, 1850s-1940s.** Several hundred stamps in an old time album, plenty of better 19th century, much is in less than stellar condition, though plenty attractive and some usable 20th century (Photo on web site). **Estimate \$150 - 200**



- 621 ★/(★) **Italian Area, 1863/1891 Issues.** 26 different, unused, few original gum, comprised 26-28, 31, 34-35, 37-44 (40 o.g.), 52 (o.g.), 64-66, 72 (o.g.), few minor flaws but mostly Fine fresh lot (Photo). **\$4,000 (approximately)**



- 622 ★/O **Italian Area, Collection, generally 1915-1930.** Over 100 different, mostly offices abroad, occupations, colonies, etc., including Tripoli #4, Somalia B1-4, appears to be mostly F-VF, mint with original gum (Photo). **\$1,800 approximately**



- 623 ★/O **Italian Area, Italy Allied Military Government Highly Specialized Collection.** 100s of stamps, stationery and postal history, strong in Trieste and German area, including mint singles and sets, perf varieties, shades, errors, forgeries, fiscal imprint blocks, unusual postal cards, covers, etc. the mint appears to be NH. Mounted on Bush pages and much unmounted in Bush envelopes, all purchased from Bush. Includes articles, descriptions, etc. Great start or addition to a specialized A.M.G. collection. Owner's cost over \$7,700 (Photo). **Estimate \$1,500 - 2,000**



- 624 ★ **Italian Area, Comprehensive Collection, 1862-1960.** Most of the value is in complete sets, includes offices, Aegean Island, San Marino (not comprehensive), and Vatican (almost complete), virtually all original gum with some never hinged, surprises in the 1940s and 1950s. The collection is mounted in PM mounts, many are open on one side and many are not— will take some time, but the quality overall is excellent, approximate cat value with all counted as hinged (except unused earlies) \$12,000 (Photo). Estimate \$1,000 - 1,500



- 625 ★ **Italian Occupation of the Aegean Islands, Collection.** Over 150 different, including a few used on album pages, appears to be virtually all original gum, F-VF (Photo). \$2,000 approximately





- 626 ★ **Italian Occupation of the Aegean Islands, 1912-1921 Overprints.** Approximately 40 different better values, few trivial flaws, almost all o.g., generally lightly hinged, F-VF (Photo). \$3,000 (approximately)



- 627 ★ **Italian Occupation of the Aegean Islands.** Garibaldi issue complete for Italy, and the Aegean Is. (general issue, no airpost special delivery), plus the other 12 islands), original gum mostly lightly hinged, one stamp with small tear, couple trivial flaws but almost all F-VF and fresh (Photo). \$2,636

- 628 ★★/★ **Netherlands East Indies, Netherlands, Indies, and Indonesia.** Over 100 different Netherlands Indies, including many better sets, a little gum toning but better later set (?), original gum never hinged, plus 100s of Indonesia, including many blocks, imperfs, varieties, etc., nice clean collection. Estimate \$300 - 400

- 629  **Ryukyus, Lot of Early FDCs.** 19 covers, virtually all cacheted, many with multiples including #14 (2), 15 (2), 18 (2), 29 (3), etc., Cat as stamps (for the multiples) or First Day Covers **(Photo on web site).** **\$900 (approximately)**
- 630 ★★ **Ryukyus, Small Group of Better Sets.** Comprised 30 (6), 35 (5), C1-3, C9-13 (9), C14-18 (2), E1 (17), including some blocks, original gum never hinged, F-VF. **\$1,250 (approximately)**
- 631  **Vatican, Better First Day Covers** comprised uncacheted 1-13, E1-2, 122-131, E11-12; cacheted 155, 155a, C18-19 (2), C20-21 (5, one not cacheted), F-VF, cat off cover \$1,680 **(Photo on web site).** **Estimate \$400 - 500**
- 632 ★/○ **Worldwide, Premium Worldwide Collection.** Many 100s, mostly mint, mostly Air-mails and Semi-Postals, and mostly complete sets, neatly mounted in two Scott albums and a stock book, highlights include Austria, Renner sheets never hinged; Belgium, many of the better souvenir sheets (most with gum toning on reverse only); better France; Germany Zepps complete (Chicago used), and S.S.; Liechtenstein 131; U.S. Zepps complete, etc. (see photos for more highlights), overall mostly F-VF, some never hinged, very clean and most useful collection **(Photo on web site).** **Estimate \$5,000 - 7,500**
- 633 ★/○ **Worldwide, Old Time collector's left overs.** In two large cartons, the collector was active in the 1930-1960 period (with a little added later by a relative), includes a U.S. album with Officials and Revenues, a Scott International Junior with ? covers of the period, many 100s of stamps on clippings or soaked off, should be a full winter's (?) entertainment. **Estimate \$300 - 400**
- 634 ★/○ **Worldwide, Mounted Collection.** Several 1,000's in two Master Global albums, a bit better than average with some \$10-\$30 stamps or sets. **Estimate \$200 - 300**