

PUBLIC AUCTION #364

# UNITED STATES & CANADA STAMPS & COLLECTIONS

SEPTEMBER 9-10, 2022



Featuring  
The Randy Klimetz Collection  
of Superb Graded U.S.



MATTHEW BENNETT INTERNATIONAL

[www.bennettstamps.com](http://www.bennettstamps.com)

## Session 1: U.S. Stamps

Friday, Sep. 9, 2022, starting at 10:30 AM

1846-1860 Issues . . . . .	1-17
1861-1867 Issues . . . . .	18-27
1869 Pictorial Issue . . . . .	28-34
1870-1890 Bank Note Co. Issues . . . . .	35-57
1893 Columbian Issue. . . . .	58-77
1894-1898 Bureau Issues . . . . .	78-102
1898 Trans-Mississippi Issue . . . . .	103-117
1901 Pan-American Issue . . . . .	118-133
1902-06 Regular Issues . . . . .	134-147
1904 -1907 Commemorative Issues. . . . .	148-159
1908-1911 Washington-Franklin Issues . . . . .	160-186
1913-1915 Panama-Pacific Issue . . . . .	187-197
1912-1920 Washington-Franklin Issues . . . . .	198-252
1922-1925 Regular Issue . . . . .	253-262
1923-1934 Issues . . . . .	263-292

## Session 2: U.S. and Canada Stamps and Collections

Saturday, Sep. 10, 2022, starting at 10:30 AM

Airmail . . . . .	293-305
Special Delivery . . . . .	306-310
Postage Due. . . . .	311-312
Offices in China . . . . .	313-314
Officials . . . . .	315-317
Parcel Post . . . . .	318-324
Postal Stationery . . . . .	325-412
Revenue . . . . .	413
Confederacy . . . . .	414

### U.S. Possessions

Canal Zone . . . . .	415-423
----------------------	---------

### Canada and Provinces

Canadian Provinces . . . . .	424-431
Canada . . . . .	432-491

### U.S. Groups and Collections

U.S. Groups . . . . .	492-524
U.S. Collections . . . . .	525-537
U.S. Face Value Lots . . . . .	538-540
Canal Zone Collections . . . . .	541-543

### Canada Groups and Collections

Canada Groups . . . . .	544-548
Canada Collections . . . . .	549-550

## UNITED STATES STAMPS

## 1846-1860 ISSUES



- 1 ○ **New York, N.Y., 1846, 5¢ black on bluish, signed “ACM” connected. (9X1).** Vertical pair. Margins all around, rich color, blue manuscript cancel, certificate says tiny manuscript ink erosion which is trifling if at all, and “paper with bluish cast the result of exposure to an unknown source,” which mostly appears like uneven bluing, otherwise Very Fine and much more attractive than certificate makes it sound. **\$1,400**

Expertization: **with 2020 P.F. certificate.**



- 2 ○ **1847, 5¢ red brown. (1).** Ample margins top and bottom, huge at the sides, rich color, fine impression, blue grid cancels, Extremely Fine and most attractive, graded values without premium for the blue cancel. *SSV \$475 (SMQ \$475).* **\$390**

Expertization: **with 2022 P.F. certificate graded VF-XF 85.**



- 3 ○ **1851, 1¢ blue, type II. (7).** Four generous balanced margins, stunning intense color, light face-free cancel, Extremely Fine and most handsome. Easily a 90 in our opinion *SSV \$210 (SMQ \$190).* **\$140**

Expertization: **with 2022 P.F. certificate graded VF-XF 85.**



- 4 ○ **1851, 3¢ orange brown, type II. (10A).** Position 30RO, large to huge margins including portion of adjoining stamp at bottom and part sheet margin at right, fresh deep color and paper, pretty blue town postmark, Extremely Fine, lovely stamp. *SMQ \$400 (SMQ \$375).* **\$155**  
 Expertization: **with 1997, 2022 P.F. certificates, the latter graded XF 90Q.**



- 5 ○ **1851, 3¢ orange brown, type II. (10A).** Horizontal pair. Margins to in a little in two spots, brilliant deep color, sharp impression, neat town postmark, F.-V.F. **\$500**



- 6 ○ **1857, 3¢ rose, type I. (25).** A stunning used single, perfectly centered with the perfs essentially clearing frame lines all around, wonderful fresh rich color, light town postmark, Extremely Fine, the highest grade by the PF and the sole eample, only one at this grade at the PSE and only one higher (98). *SSV \$2,400 (SMQ \$2,500).* **\$190**

Expertization: **with 1999, 2022 P.F. certificates, the latter graded XF-SUP 95.**



- 7 ★□ **1857, 3¢ dull red, type III. (26).** Block of four. Original gum moderate hinge remnants, about as well centered a block one will find, bright color and paper, fine impression, Extremely Fine, a choice block. **\$450**



- 8 ★★ 1857, 3¢ dull red, type IV. (26A). Right margin single, original gum never hinged, beautifully centered for this closely spaced issue with perfs clear of frame line all around! rich color, Extremely Fine, *unpriced in never hinged condition*. **\$600 as hinged**

AN EXCEPTIONAL MINT EXAMPLE OF THE SCARCE TYPE IV, ESPECIALLY AS IT IS ONE OF THE FEW NEVER HINGED EXAMPLES EXTANT. IT IS THE HIGHEST GRADED NEVER HINGED SINGLE, BEING THE SOLE EXAMPLE BY THE PF AND SHARES THIS GRADE WITH THREE BY THE PSE.

Expertization: with 1988, 2022 P.F. certificates, the latter graded VF-XF 85.



- 9 ○ 1857, 5¢ red brown, type I. (28). Well centered, exceptionally fresh with deep color and bright paper, reperforated at top, Handsome Extremely Fine appearance. **\$1,100**



- 10 ★ 1861, 5¢ orange brown, type II. (30). Original gum, stunning color on bright paper, reperforated at right, choice Extremely Fine appearance, with perforations well clear at top and bottom, very scarce thus. **\$1,200**



- 11 ★ 1860, 5¢ brown, type II. (30A). Original, prooflike color and impression, excellent centering, reperfed at right, Extremely Fine appearance, pretty stamp. **\$2,250**



- 12 ★ 1857, 10¢ green, type II. (32).** Partly disturbed original gum, quite well centered, bright color, perf flaws and a small thin at right, otherwise F.-V.F. and a more than serviceable example of this quite scarce mint 1857 10¢ issue. **\$5,750**

Expertization: **with 2022 P.F. certificate.**



- 13 ○ 1857, 12¢ black, plate I. (36).** Incredibly well centered with the perfs virtually clearing all around, rich color, sharp impression, light unobtrusive cancel, an Extremely Fine gem. *SSV \$800 (SMQ \$950).* **\$300**  
Expertization: **with 2022 P.F. certificate graded XF 90.**



- 14 ★ 1860, 24¢ gray lilac. (37).** Lightly disturbed original gum, rich color, sharp impression, reperforated at bottom, fresh Very Fine appearance. **\$1,450**



- 15 ○ 1860, 24¢ gray lilac. (37).** Exceptional centering for this very closely spaced issue, incredibly fresh with lovely color and a sharp impression, all enhanced by a bright red face-free grid cancel, Extremely Fine. *SSV \$3,650 (SMQ \$4,000).* **\$465**

A VISUALLY STUNNING EXAMPLE OF THE 30¢ 1857-1861 ISSUE, ONLY ONE GRADED HIGHER BY THE PF (98) AND SIX BY THE PSE (98).

Expertization: **with 2000, 2022 P.F. certificates, the latter graded XF-SUP 95.**



- 16**    (★)    **1860, 90¢ blue. (39).** Unused, skillfully regummed, reperforated at right, lovely color and centering, Very Fine appearance, a most handsome stamp. **\$1,400**  
Expertization: **with 2022 P.S.E. certificate.**



- 17**    P    **1857-60 (1875 Reprint), 1¢ bright blue, imperf proof on stamp paper. (40P5).** Unused without gum, rich color, fresh Extremely Fine. **\$750**  
Expertization: **with 2022 P.F. certificate.**



## 1861-1867 ISSUES



- 18 ○ **1861, 1¢ blue. (63).** Choice centering, beautiful fresh color and paper, bright red town postmark, Extremely Fine, a gorgeous gem. *SSV \$160 without premium for red cancel (SMQ \$160 without premium for red cancel).* **\$60**

Expertization: **with 1992, 2022 P.F. certificates, the latter graded XF 90.**



- 19 P□ **1861, 3¢ rose, proof on stamp paper. (65P5).** Block of four. Original gum, large balanced margins, rich color, fresh and choice Extremely Fine, rare multiple. **\$2,000**



- 20 ○ **1861, 3¢ rose. (65).** Choice centering, wonderfully fresh color and paper, neat grid cancel, an Extremely Fine gem. *SSV \$225 (SMQ \$275).* **\$3**

Expertization: **with 2021 P.S.A.G. certificate graded XF-SUP 95.**



- 21 ○ **1861, 3¢ rose. (65).** Huge straddle margin single, bright color and a neat green target cancel, Extremely Fine striking. **\$103**

Expertization: **with 2001 P.F. certificate.**





- 22 ★ 1861, 10¢ green. (68). Large part original gum, lovely deep color, very well centered, Very Fine. \$950



- 23 (★) 1861, 90¢ blue. (72). Unused without gum, choice centering, exquisite deep color, Extremely Fine, the highest graded unused single by the PF, and the only example. The PSE has graded, only one higher (98). *SSV* \$2,750 (*SMQ* \$2,650). \$1,200

A GORGEOUS EXAMPLE IF THE SCARCE UNUSED 90¢ 1861 ISSUE.

Expertization: with 2022 P.F. certificate graded XF-S 95.



- 24 ○ 1863, 24¢ grayish lilac. (78a). Horizontal pair. Very well centered, unusually rich shade and sharp impression, grid cancel, trifling corner crease top left, invisible to naked eye, otherwise choice, Very Fine. \$850



- 25 ○ 1867, 10¢ green, E. grill. (89). Beautifully centered within wide margins, good strike “circle of Vs” cancel, rich color, Extremely Fine. *SSV* \$575 (*SMQ* \$575). \$350

Expertization: with 2002, 2022 P.F. certificates, the latter graded VF-XF 85.



- 26 ○ 1867, 5¢ brown, F. grill. (95). Exceptionally well centered, bright color, neat circle of wedges cancel, faint crease, basically unnoticeable and certainly does not detract, choice Extremely Fine appearance. \$850



- 27 ○ **1867, 12¢ black, F. grill. (97).** Quite well centered, intense shade, light cancel, Very Fine, choice. **\$250**  
 Expertization: **with 1988 P.F. certificate.**

### 1869 PICTORIAL ISSUE



- 28 ★ **1869, 1¢ buff. (112).** Original gum, well centered, lovely color, tiny natural inclusion (not mentioned in cert), Very Fine. **\$575**  
 Expertization: **with 2002 P.F. certificate.**



- 29 ○ **1869, 3¢ ultramarine. (114).** Incredible centering within absolutely huge margins, brilliant color and paper and a neat target cancel, Extremely Fine, a gem with great eye appeal. *Unpriced in SSV (SMQ \$700).* **\$16**  
 Expertization: **with 2022 P.F. certificate graded XF-SUP 95J.**



- 30 ○ **1869, 10¢ yellow. (116).** Beautifully centered with wide margins, glowing color, light target cancel, Extremely Fine, a beautiful stamp. *SSV \$850 (SMQ \$1,050).* **\$110**  
 Expertization: **with 1998, 2022 P.F. certificates, the latter graded XF-SUP 95.**



- 31 ○ **1869, 15¢ brown & blue, type II. (119).** Well centered, beautiful rich colors, neat target cancel, Very Fine. *SMQ \$450.* **\$190**  
 Expertization: **with 2022 P.S.E. certificate graded VF-XF 85.**



- 32 (★) 1869, 30¢ ultramarine & carmine. (121).** Small part original gum, exceptionally well centered within wide balanced margins, bright and fresh colors and paper, Extremely Fine. SSV \$16,500 for o.g. \$2,350 for n.g. (SMQ \$17,000 for o.g. \$3,350 for no gum). **\$1,450 for no gum**  
 Expertization: **with 1992, 2022 P.F. certificates, the latter graded XF 90.**



- 33 (★) 1869 (1875 Re-issue), 1¢ buff. (123).** Unused without gum, flawlessly centered, exceptionally fresh, Extremely Fine. SSV \$700 (SMQ \$750). **\$220**  
 Expertization: **with 1985, 2022 P.F. certificates, the latter graded XF-SUP 95.**



- 34 (★) 1869 (1880 Re-issue), 1¢ buff. (133).** Unused without gum, excellent centering, luminous color, Extremely Fine, SSV \$190 (SMQ \$200). **\$150**  
 Expertization: **with 2022 P.F. certificate graded VF-XF 85.**

## 1870-1890 BANK NOTE CO. ISSUES



- 35 ○ 1870, 1¢ ultramarine, H. grill, N.B.N.C. printing. (134). Choice centering, bright color and paper, neat circle of "v"s cancel, Extremely Fine. *SSV \$400 (SMQ \$475)*. **\$200**  
 Expertization: with 2022 P.F. certificate graded XF 90.



- 36 (★) 1870, 10¢ brown, H. grill, N.B.N.C. printing. (139). Unused regummed, quite well centered, brilliant prooflike color and impression, numerous visible grill points, Extremely Fine, simply stunning, this is the highest grade mint or unused with only one other unused at this grade at the PF, and the PSE highest unused is 80 (2 examples), and one mint at 85J. *SSV \$3,750 (SMQ \$3,500)*. **\$2,700**  
 Expertization: with 2022 P.F. certificate graded XF 90.



- 37 ○ 1870, 24¢ purple, N.B.N.C. printing. (153). Flawlessly centered, rich color especially for this often pale stamp, cork cancel, fresh and choice Extremely Fine, between the PF and PSE, a total of only three used examples grade higher (two 95J and a 98). *SSV \$1,200 (SMQ \$1,200)*. **\$210**  
 Expertization: with 2022 P.F. certificate graded XF-SUP 95.



- 38 ○ 1873, 7¢ orange vermillion, C.B.N.C. printing. (160). Beautifully centered, stunning rich color, lightly cancelled, Extremely Fine, a beauty. *SSV \$200 (SMQ \$175)*. **\$85**  
 Expertization: with 1981, 2022 P.F. certificates, the latter graded XF 90.



- 39 ○ 1873, 15¢ yellow orange, C.B.N.C. printing. (163). Choice centering, remarkably fresh color, neat face-free cancel, Extremely Fine, a lovely used gem. *SSV* \$425 (*SMQ* \$350). **\$150**  
 Expertization: with 2022 P.F. certificate graded XF 90.



- 40 ★ 1879, 2¢ vermilion, A.B.N.C. printing. (183). Original gum, excellent centering, beautiful color, Extremely Fine. *SSV* \$225 (*SMQ* \$275). **\$100**  
 Expertization: with 2022 P.F. certificate graded XF 90.



- 41 ★ 1879, 5¢ blue, A.B.N.C. printing. (185). Original gum, exceptional centering, brilliant color with a razor-sharp impression, tiny light corner crease lower left, completely invisible from front, beautiful, Extremely Fine appearance. **\$500**  
 Expertization: with 1998, 2021 P.F. certificates.



- 42 ○ 1879, 10¢ brown, A.B.N.C. printing, with secret mark. (188). Outstanding centering within very wide margins, bright fresh color, light face-free cancel, Extremely Fine, choice. *SSV* \$130 as regular 90, \$375 as a 95 (*SMQ* \$225). **\$30**  
 Expertization: with 1999, 2022 P.F. certificates, the latter graded XF 90J.



- 43 ★ 1879, 15¢ red orange, A.B.N.C. printing. (189).** Original gum lightly hinged, choice color and centering, Extremely Fine, handsome. *SSV \$425 (SMQ \$450).* **\$180**  
 Expertization: **with 2022 P.F. certificate graded XF 90.**



- 44 ○ 1879, 30¢ full black, A.B.N.C. printing. (190).** Outstanding centering, fresh intense color, neat double oval Registry cancel, Extremely Fine, scarce this choice. *SSV \$250 (SMQ \$375).* **\$90**  
 Expertization: **with 2022 P.F. certificate graded XF 90.**



- 45 ○ 1882, 5¢ yellow brown. (205).** Beautifully centered within lavishly large margins, deep color on fresh paper, light cancel, an Extremely Fine gem. *SSV \$130 as regular 90, \$300 as a 95 (SMQ \$225).* **\$15**  
 Expertization: **with 1996 A.P.S. certificate and 2022 P.F. certificate, the latter graded XF 90J.**



- 46 ○ 1882, 6¢ rose. (208).** Exceptionally well centered, lovely pastel shade, well struck duplex cancel, Extremely Fine, used singles are scarce in this choice condition. *SSV \$425 (SMQ \$275).* **\$110**  
 Expertization: **with 2022 P.F. certificate graded XF 90.**



- 47 ○ **1882, 6¢ rose. (208).** Essentially perfectly centered within huge margins, bright fresh color and paper, neat Philadelphia double oval cancel, trivial small corner crease, otherwise an Extremely Fine jumbo and certainly one of the most striking used singles extant. **\$110**

Expertization: **with 1999 P.F. certificate.**



- 48 ★ **1888, 90¢ purple. (218).** Original gum barely hinged if at all (the 2010 cert calls this never hinged), choice centering within extravagantly large margins, bright pastel shade, Extremely Fine. *SMQ unpriced as a 90J, \$1,800 as a regular 90, \$2,750 as a 95.* **\$800**

AN EXQUISITE EXAMPLE OF THE 90¢ PURPLE WITH GREAT EYE APPEAL.

Expertization: **with 2010 P.S.E. certificate graded XF 90J as never hinged, 2022 P.S.E. certificate graded 90J previously hinged.**



- 49 ○ **1890, 2¢ lake. (219D).** Choice centering within wide margins, gorgeous rich color, neat duplex cancel, an Extremely Fine gem. *SMQ \$275.* **\$5**

Expertization: **with 2007 P.S.E. certificate graded XF-SUP 95.**



- 50 ○ **1890, 2¢ carmine. (220).** Essentially perfectly centered with a beautifully struck fancy star cancel, bright Extremely Fine. *SMQ \$120 (without a premium for cancel).* **Estimate 100 - 150**

Expertization: **with 2005 P.S.E. certificate.**

Provenance: **Kirke.**





- 51 ★★ 1890, 2¢ carmine, cap on left “2” variety. (220a). Original gum never hinged, excellent centering, rich color on bright fresh paper, Extremely Fine, quite scarce in this choice never hinged condition. *SSV* \$1,075 (*SMQ* \$1,150). **\$425**

Expertization: with 2022 P.F. certificate graded XF 90.



- 52 (★) 1890, 2¢ carmine, cap on both “2’s” variety. (220c). Unused no gum, perfectly centered within large margins, rich color, Superb, the only example at this grade, the highest graded mint or unused example by either expertizing body is 90J (one by the PSE), unpriced for mint or unused in this grade, price for used in this grade *SSV* \$1,200 for (*SMQ* \$1,250). **\$650 (for mint)**

Expertization: with 2010, 2020 P.F. certificates, the latter graded SUP 98.



- 53 ★ 1890, 3¢ purple. (221). Original gum, wonderfully well centered within wide balanced margins, brilliant color and paper, Extremely Fine, a stunning 3¢ small bank note. *SSV* \$275 as a regular 95 (*SMQ* \$425). **\$55**  
Expertization: with 2022 P.F. certificate graded XF-SUP 95J.



- 54 ★ 1890, 30¢ black. (228). Original gum invisibly hinged if at all, perfectly centered, crisp color on bright paper, Superb, the only example at this grade and only two higher (98J). *SMQ* \$2,250. **\$300**

A MAGNIFICENT 30¢ SMALL BANK NOTE.

Expertization: with 2010, 2020 P.S.E. certificates, both graded SUP 98.

Provenance: Curtis, Morton.



- 55 ★ 1890, 30¢ black. (228).** Original gum, exceptional centering, rich color, light overall toning, mostly noticeable on reverse (not mentioned in PF cert), and grade most likely reduced by the PSE, Extremely Fine. *SMQ* \$725. **\$300**

Expertization: **with 2000 P.F. certificate and 2021 P.S.E. certificate, the latter graded XF 90.**



- 56 ○ 1890, 30¢ black. (228).** Essentially perfectly centered, fresh intense shade, light double oval cancel, Extremely Fine, choice used gem. The highest graded used example by the PF with one other at this grade and for reference the PSE only two graded higher (95J and 98). *SSV* \$425 (*SMQ* \$425). **\$30**

Expertization: **with 2022 P.F. certificate graded XF-SUP 95.**



- 57 ○ 1890, 90¢ orange. (229).** Exceptional centering within wide margins, well preserved color, neat double oval registry cancel, fresh and choice Extremely Fine, 90¢ used small bank notes are seldom seen this choice. *SSV* \$300 as a regular 90 (*SMQ* \$550). **\$140**

Expertization: **with 2022 P.F. certificate graded XF 90J.**

## 1893 COLUMBIAN ISSUE



- 58 ★★ 1893, 1¢ Columbian. (230). Original gum never hinged, beautifully centered within enormous margins, deep prooflike color on bright paper, Extremely Fine, surely one of the largest margined 1¢ Columbian singles extant. *SMQ* \$200. **\$32**

Expertization: with 1988 P.F. certificate and 2017 P.S.E. certificate, the latter graded XF 90.



- 59 ★★ 1893, 1¢ Columbian. (230). Original gum never hinged, outstanding centering, post office fresh, an Extremely Fine gem. *SSV* \$400 (*SMQ* \$300). **\$32**

Expertization: with 2015 P.F. certificate graded XF-SUP 95.



- 60 ★★ 1893, 2¢ Columbian. (231). Original gum never hinged, impeccable centering within incredibly large margins, lovely fresh color, a stunning Extremely Fine jumbo. *SMQ* \$750. **\$31**

Expertization: with 1984, 1990 P.F. certificates and 2017 P.S.E. certificate, the last graded XF-SUP 95J.



- 61 ★★ 1893, 2¢ Columbian. (231). Original gum never hinged mathematically centered within wide balanced margins, exceptionally fresh with lovely deep color, an Extremely Fine gem. *SSV* \$450 (*SMQ* \$350). **\$31**

Expertization: with 2022 P.F. certificate graded XF-SUP 95.



- 62 ★ **1893, 3¢ Columbian. (232).** Original gum lightly hinged, the largest margined 3¢ Columbian we have ever seen, and well centered within these spectacular margins, fresh color, bright paper, Extremely Fine. *SMQ \$100.*  
**\$35**

SIMPLY SPECACULAR, THE SMQ 90J PRICE CANNOT APPLY TO THIS STAMP.

Expertization: with 1989 P.F. certificate and 2021 P.S.E. certificate, the latter graded XF 90.



- 63 ★★ **1893, 4¢//10¢ Columbians. (233, 235, 237).** Original gum never hinged, bright and fresh, F.-V.F.  
**\$565**



- 64 ★★ **1893, 4¢ Columbian. (233).** Original gum never hinged, choice centering, fresh rich color, an Extremely Fine gem. *SSV \$925 (SMQ \$900).*  
**\$150**  
 Expertization: with 2004, 2014 P.F. certificates, the latter graded XF-SUP 95.



- 65 ★★ **1893, 5¢ Columbian. (234).** Original gum never hinged, outstanding centering, brilliant prooflike color and impression, Extremely Fine, a stunning 5¢ Columbian. *SSV \$950 (SMQ \$900).* **\$150**  
 Expertization: **with 1995, 2022 P.F. certificates, the latter graded XF-SUP 95.**



- 66 ★★ **1893, 5¢ Columbian. (234).** Original gum never hinged, outstanding centering within beautifully balanced margins, rich color and a sharp impression, o.g., never hinged, choice Extremely Fine, beautiful stamp. *SMQ \$850.* **\$150**  
 Expertization: **with 2010 P.S.E. certificate graded XF-SUP 95.**



- 67 ★★ **1893, 8¢ Columbian. (236).** Original gum never hinged, beautifully centered, post office fresh with bright color, Extremely Fine, a lovely gem. *SMQ \$1,750.* **\$150**  
 Expertization: **with 2011 P.S.E. certificate graded XF-SUP 95.**



- 68 ★★ **1893, 8¢ Columbian. (236).** Right margin single, original gum never hinged, natural gum bend, beautifully centered within huge margins, exceptionally bright and fresh, Extremely Fine. **\$140**



- 69 ★★ **1893, 15¢ Columbian. (238).** Original gum never hinged, bright color, fresh, couple tiny specks on reverse of a couple of perfs, obviously trivial, Very Fine. **\$600**



- 70 ★ **1893, 15¢ Columbian. (238).** Original gum lightly hinged, well centered within wide margins, beautiful color on crisp white paper, Extremely Fine. **\$200**



- 71 ★ **1893, 50¢ Columbian. (240).** Original gum barely hinged, perfectly centered within wide margins, gorgeous deep color, Superb. *SMQ* \$3,600. **\$450**

A STUNNING MINT EXAMPLE OF THE 50¢ COLUMBIAN, ONLY THREE OTHERS AT THIS GRADE AND ONLY FOUR HIGHER.

Expertization: **with 2013 P.S.E. certificate graded SUP 98.**



- 72 ○ **1893, \$1 Columbian. (241).** Wonderfully well centered, brilliant color and paper, barely cancelled, Extremely Fine, lovely stamp. *SMQ* \$2,600. **\$525**

Expertization: **with 2022 P.S.E. certificate graded XF-SUP 95.**



- 73 ★ **1893, \$2 Columbian. (242).** Original gum, flawless centering within large margins, beautiful color and a sharp impression, Extremely Fine, only seven mint \$2 Columbians (PF and PSE combined) grade higher. *SSV* \$4,500 (*SMQ* \$4,000). **\$1,100**

A STUNNING MINT \$2 COLUMBIAN, RARELY SEEN THIS CHOICE.

Expertization: **with 2022 P.F. certificate graded XF-SUP 95.**





- 74 ★ 1893, \$2 Columbian. (242). Original gum lightly hinged, nicely centered, lovely fresh color on bright paper, F.-V.F. **\$1,100**



- 75 ○ 1893, \$3 Columbian. (243). Excellent centering, bright color, very faint crease, absolutely invisibly to naked eye, choice Very Fine appearance. **\$775**



- 76 ★ 1893, \$4 Columbian. (244). Original gum hinge remnant, bit heavy gum bend, lovely color, Very Fine. **\$2,100**

Expertization: with 1986 P.F. certificate.



- 77 ★ 1893, \$5 Columbian. (245). Original gum, beautifully centered, excellent color and impression, expertly reperforated at left, handsome Extremely Fine appearance. **\$2,400**



## 1894-1898 BUREAU ISSUES



- 78 ★□ 1894 unwatermarked. (247-48, 250). Blocks of four. Original gum, 1¢ very lightly hinged, 248 (2 lightly hinged, 2 never hinged), bright colors, fresh Very Fine. **\$626**



- 79 ★★ 1894, 1¢ blue, unwatermarked. (247). Original gum never hinged, virtually perfectly centered, luxurious rich color contrasted by bright paper, an Extremely Fine gem. *SSV \$2,100 (SMQ \$2,100)*. **\$160**

A STUNNING GEM, THE HIGHEST GRADED BY THE PF AND ONLY TWO GRADED HIGHER BY THE PSE (95J HIGHEST).

Expertization: with 2022 P.F. certificate graded XF-SUP 95.



- 80 ★ 1894, 2¢ carmine, type II, unwatermarked. (251). Original gum, barely hinged if at all, natural perf dimple, stunning color, Very Fine. **\$400**



- 81 ★★□ 1894, 2¢ carmine, type III, unwatermarked. (252). Block of four. Original gum never hinged, well centered and fresh, upper right stamp tiny unnoticeable inclusion, Very Fine. **\$1,600 as singles**



- 82 ○ **1894, 4¢ dark brown, unwatermarked. (254).** Wonderfully well centered within extravagantly large margins, deep rich color, Extremely Fine, a stunning used jumbo margined single, the highest graded by the PF and only two graded higher by the PSE(98,100). *SSV \$300 as a regular 95 (SMQ \$625).* **\$11**  
 Expertization: **with 2003, 2022 P.F. certificates, the latter graded XF-SUP 95J.**



- 83 ★ **1894, 8¢ violet brown, unwatermarked. (257).** Original gum, outstanding centering, brilliant color, Extremely Fine. **\$160**



- 84 ★ **1894, 50¢ orange, unwatermarked. (260).** Lower right corner margin copy, position 100, natural straight edge at bottom, very well centered, glowing color, choice Very Fine. **\$1,425**



- 85 ★ **1894, 50¢ orange, unwatermarked. (260).** Original gum, moderate hinge remnant, luminous rich color, fresh Very Fine. **\$475**



- 86 ○ **1894, 50¢ orange, unwatermarked. (260).** Near perfect centering, deep fresh color, Extremely Fine, scarce in this choice used condition. *SSV \$235 (SMQ \$250).* **\$140**  
 Expertization: **with 1997 (for a block), 1998, 2022 P.F. certificates, the last graded VF-XF 85.**



- 87 ★★ 1895, 1¢ blue, D.L. watermark. (264). Top plate no. 168 single, original gum never hinged, impeccable centering within large margins, prooflike color on bright white paper, simply Superb, only five graded higher. *SMQ* \$1,600. **\$17**

Expertization: with 2006 P.S.E. certificate graded SUP 98.

Provenance: **Golden Oak.**



- 88 ★★/★□ 1895, 2¢ carmine, types II & III, D.L. watermark. (266-267). Block of four containing two pairs. Original gum, one pair never hinged, the other lightly hinged, very light pencil type notations on reverse, fresh and Fine. **\$820**



- 89 ★★ 1895, 6¢ dull brown, D.L. watermark. (271). Original gum never hinged, beautifully centered, rich color and a highly detailed impression, Extremely Fine. *SSV* \$800 (*SMQ* \$900). **\$325**

Expertization: with 2022 P.F. certificate graded XF 90.



- 90 ★ 1895, 15¢ dark blue, D.L. watermark. (274). Original gum, beautifully centered, intense color on bright paper, Very Fine to Extremely Fine. **\$200**



- 91 ★ 1895, 50¢ red orange, D.L. watermark. (275a). Original gum lightly hinged, beautifully centered, fresh paper, rich color except a bit of light sulfurization at top, Extremely Fine. *SMQ* \$550. **\$325**  
 Expertization: with 1983 P.F. certificate and 2022 P.S.E. certificate, the latter graded XF 90.



- 92 ★ 1895, \$2 bright blue, D.L. watermark. (277). Original gum, excellent centering, exquisite color, small internal crease, truly trivial, Extremely Fine appearance. **\$900**  
 Expertization: with 2001 P.S.E. certificate.



- 93 ○ 1895, \$5 dark green, D.L. watermark. (278). Well centered, rich color on bright paper, minor thin, handsome Very Fine appearance. **\$600**



- 94 ★★ 1898, 1¢ deep green. (279). Original gum never hinged, beautifully centered within large margins, gorgeous bright rich color, Extremely Fine, a lovely little gem. *SSV* \$400 (*SMQ* \$375). **\$25**  
 Expertization: with 2022 P.F. certificate graded XF-SUP 95.



- 95 ○ 1898, 4¢ orange brown. (280b). Superb centering, rich color, Extremely Fine, a used gem, only four graded 95 by the PSE, and only one higher. *SSV* \$260 (*SMQ* \$325). **\$3**  
 Expertization: with 2020 P.S.A.G. certificate graded XF-SUP 95.



- 96 ★ 1898, 6¢ lake. (282). Top margin part imprint single, original gum lightly hinged, beautifully centered, prooflike color, Extremely Fine, pretty stamp. *SMQ* \$190. **\$45**  
 Expertization: with 2006 P.S.E. certificate graded XF-SUP 95.



- 97 ★★ 1898, 10¢ brown, type I. (282C). Original gum never hinged, very well centered, bright fresh color and paper, Extremely Fine only a combined total of six graded higher by the PF&PSE, with the highest being a single 98. *SSV* \$1,420 (*SMQ* \$1,700). **\$525**  
 Expertization: with 2022 P.F. certificate graded XF 90.



- 98 ★ 1898, 10¢ brown, type I. (282C). Original gum very lightly hinged, virtually perfectly centered, gorgeous color, bright, Extremely Fine. *SSV* \$350 (*SMQ* \$325). **\$175**  
 Expertization: with 1990, 2022 P.F. certificates, the latter graded XF 90.



- 99 ★ 1898, 10¢ orange brown, type II. (283). Original gum, beautifully centered, gorgeous color on bright paper, Extremely Fine. *SSV* \$325 (*SMQ* \$275). **\$150**  
 Expertization: with 2022 P.F. certificate graded XF 90.



- 100 ★★ 1898, 10¢ orange brown, type II. (283).** Top margin single, original gum never hinged, crisp color and impression, fresh F.-V.F. **\$450**



- 101 ○ 1898, 10¢ orange brown, type II, vertical watermark. (283a).** Outstanding centering, deep color, an Extremely Fine gem example of this scarce watermark variety, only four others at this grade and four higher (all 95s). *SMQ* \$160. **\$15**

Expertization: **with 2015 P.S.E. certificate graded XF 90.**



- 102 ★ 1898, 15¢ olive green. (284).** Bottom plate no. 264 single, original gum, absolutely imperceptible hinging if at all (light gum bend not mentioned in cert), uncharacteristically large margins and wonderfully well centered within exquisite rich color, Extremely Fine. *SSV* \$600 as regular 95 (*SMQ* \$725). **\$150**

WE CANNOT RECALL A MORE ATTRACTIVE EXAMPLE OF THE 1898 15¢ OLIVE, ONLY TWO OTHERS AT THIS GRADE AND ONLY ONE HIGHER (98).

Expertization: **with 2015 P.F. certificate graded XF-SUP 95.**



## 1898 TRANS-MISSISSIPPI ISSUE



- 103 ★★ 1898, 1¢ Trans-Miss. (285). Original gum never hinged, choice centering, prooflike color and impression, Extremely Fine, beautiful stamp. *SSV \$210 (SMQ \$225)*. **\$75**  
 Expertization: with 2022 P.F. certificate graded XF 90.



- 104 ★★ 1898, 2¢ Trans-Miss. (286). Original gum never hinged, exceptionally well centered within beautifully balanced margins, stunning rich prooflike color and remarkably fresh, an Extremely Fine gem. *SSV \$2,500 (SMQ \$2,500)*. **\$72**  
 Expertization: with 2013 P.S.A.G. certificate graded SUPERB 98.



- 105 ★★ 1898, 4¢ Trans-Miss. (287). Original gum never hinged, beautifully centered within wide margins, brilliant color, tiny natural inclusion, Extremely Fine. **\$330**  
 Expertization: with 2022 P.F. certificate.



- 106 ★★/★□ 1898, 4¢ Trans-Miss. (287). Block of four. Original gum very lightly hinged, upper right barely hinged if at all, bottom pair never hinged, well centered, exceptionally fresh, o.g., some never hinged / some hinged, Very Fine. **\$880 (cat as singles)**





- 107 ★□ 1898, 4¢ Trans-Miss. (287). Wide top imprint and plate no. 599 block of four. Large part original gum, brilliant color, well centered, Very Fine. **\$850**



- 108 S 1898, 5¢ Trans-Miss., overprinted "Specimen" type E. (288SE). Original gum barest trace of hinge mark, beautifully centered, exceptionally fresh, Extremely Fine. **\$250**



- 109 ★ 1898, 5¢ Trans-Miss. (288). Top plate no. 614 single, original gum very lightly hinged, choice centering, brilliant color and paper, an Extremely Fine gem. **\$100**



- 110 ★★ 1898, 8¢ Trans-Miss. (289).** Top plate no. 609 single, original gum never hinged, very well centered within wide margins, for the 8¢ Trans-Miss, prooflike color and impression, Very Fine. *SSV \$650 as regular 85 (SMQ \$950).* **\$430**

Expertization: with 1992 (for pair), 2022 P.F. certificates, the latter graded VF-XF 85J.



- 111 ★★ 1898, 10¢ Trans-Miss. (290).** Original gum never hinged, choice centering, wonderfully fresh and rich color with a prooflike impression, Extremely Fine, a gorgeous gem. *SSV \$925 (SMQ \$950).* **\$425**

Expertization: with 2022 P.F. certificate graded XF 90.



- 112 ★★ 1898, 10¢ Trans-Miss. (290).** Top plate no. 604 single, original gum never hinged, post office fresh color and paper, choice Very Fine. **\$425**



- 113 (★) 1898, 50¢ Trans-Miss. (291).** Unused, skillfully regummed (ruled O.G. by the PF in 1995), near perfect centering within very wide margins, fresh rich color, Extremely Fine. *SSV \$2,000 as o.g. (SMQ \$1,600 as o.g.).* **\$600 as o.g.**

Expertization: with 1995 (as o.g.), 2022 P.F. certificates, the latter graded XF-SUP 95.



- 114 ★★ 1898, 50¢ Trans-Miss. (291). Right margin with split arrow single, original gum never hinged, gorgeous color and impression, Fine. *SMQ* \$550. **\$1,750**  
 Expertization: with 2012 P.S.E. certificate graded VG 50.



- 115 ○ 1898, 50¢ Trans-Miss. (291). A spectacular appearing used single, being wonderfully centered in uncharacteristically huge margins for any Trans-Miss, slight faults, none of which are visible to the naked eye, otherwise Extremely Fine, surely a contender for the finest appearing used 50¢ Trans-Miss. **\$175**



- 116 ○ 1898, \$1 Trans-Miss. (292). Choice centering within wide balanced margins, fresh intense color, Extremely Fine. *SMQ* \$1,500. **\$700**  
 Expertization: with 2000 A.P.S. certificate and 2002 P.S.E. certificate, the latter graded XF 90.



- 117 (★) 1898, \$2 Trans-Miss. (293). Unused regummed, near perfect centering, bright color and paper, reperfed, Extremely Fine appearance. **\$950**

## 1901 PAN-AMERICAN ISSUE



- 118 ★★ 1901, Pan-Americans complete. (294-299). Complete set, original gum never hinged, fresh, nicely centered, F.-V.F., premium set. **\$957**



- 119 ★★ 1901, 1¢ Pan-American. (294). Upper left corner margin single, original gum never hinged, flawlessly centered within wide margins, exquisite color, Extremely Fine and a bit undergraded in our opinion. *SMQ* \$750. **\$40**

Expertization: with 2006 P.S.E. certificate graded XF-SUP 95J.



- 120 ★★ 1901, 1¢ Pan-American. (294). Bottom split arrow and plate no. 1196 single, beautifully centered, wonderfully fresh, Extremely Fine, most attractive position piece. *SMQ* \$185. **\$40**
- Expertization: with 2005 P.F. certificate and 2017 P.S.E. certificate, the latter graded XF 90.



- 121 ★★ 1901, 2¢ Pan-American. (295).** Bottom margin with split arrow single, original gum never hinged, absolutely enormous margins—the largest we’ve seen on this stamp, post office fresh, Extremely Fine, we must say, we do not understand the grade, and the SMQ is meaningless on a stamp of these proportions. A one-in-a-million jumbo gem. *SMQ 50.* **\$37**

Expertization: with 1988 P.F., 2003 certificates, 2017 P.S.E. certificate, the last graded VF 80J.



- 122 ★★ 1901, 2¢ Pan-American. (295).** Bottom imprint single, original gum never hinged, outstanding centering, rich color, Extremely Fine. *SMQ \$325.* **\$37**

Expertization: with 2007 P.S.E. certificate graded XF-SUP 95.



- 123 ★★ 1901, 4¢ Pan-American. (296).** Original gum never hinged, choice centering, rich prooflike color and impression, an Extremely Fine gem. *SMQ \$1,000.* **\$170**

Expertization: with 1997 P.F. certificate (for a block), 2000, 2004 P.S.E. certificates, the last graded XF-SUP 95.



- 124 ★★ 1901, 4¢ Pan-American. (296).** Original gum never hinged, beautifully centered, exceptionally fresh, Extremely Fine. *SSV \$450 (SMQ \$350).* **\$170**

Expertization: with 2022 P.F. certificate graded XF 90.





- 125 ★★ 1901, 5¢ Pan-American. (297). Original gum never hinged, perfectly centered, prooflike colors and impression, Superb, a gorgeous stamp, the highest graded by the PF and the sole example, The PSE has graded, only one higher (100). *SSV* \$3,750 (*SMQ* \$4,250). **\$180**

Expertization: with 2022 P.F. certificate graded SUP 98.



- 126 ★★ 1901, 5¢ Pan-American. (297). Bottom plate no. 1140 single, original gum never hinged, beautifully centered within perfectly balanced margins, fresh and choice, Extremely Fine. *SMQ* \$400. **\$180**

Expertization: with 1995 P.F. certificate and 2017 P.S.E. certificate, the latter graded XF 90.



- 127 ★★ 1901, 8¢ Pan-American. (298). Original gum never hinged, choice centering, rich prooflike colors, fresh and choice Extremely Fine to Superb. *SSV* \$1,500 (*SMQ* \$1,400). **\$230**

Expertization: with 2022 P.F. certificate graded XF-SUP 95.



- 128 ★ 1901, 8¢ Pan-American. (298). Upper left corner margin single, original gum barely hinged if at all (the PF says never hinged and the PSE says previously hinged), perfectly centered, rich color, bright and fresh, Superb, the highest grade awarded to date, only one other at this grade and no never hinged 100s. *SMQ* \$725. **\$90**

Expertization: with 1999 P.F. certificate never hinged and 2017 P.S.E. certificate, the latter graded Gem 100 previously hinged.



- 129 ★★ 1901, 8¢ Pan-American. (298).** Top margin single with imprint, original gum never hinged, outstanding centering within unusually large margins, especially for the 8¢ Pan American, rich color, fresh, an Extremely Fine jumbo. *SMQ* \$725. **\$230**

Expertization: with 1986 P.F. certificate and 2017 P.S.E. certificate, the latter graded XF 90J.



- 130 ★★ 1901, 10¢ Pan-American. (299).** Original gum never hinged, flawlessly centered, beautiful rich colors, Extremely Fine, the only one at this grade and only two higher with no 100s. *SMQ* \$4,250. **\$300**

A MARVELOUS GEM EXAMPLE OF THE 10¢ PAN AMERICAN, TOTALLY SATISFYING IN EVERY RESPECT. WE FEEL IT DESERVES A HIGHER GRADE.

Expertization: with 2010 P.S.E. certificate graded XF-SUP 95J.



- 131 ★★ 1901, 10¢ Pan-American “sinking ship”. (299).** Lower left corner margin single, original gum never hinged, the vignette is shifted downward sufficiently to block the inscription “Fast Ocean Navigation”, exceptionally wide margins and well centered within them, bright fresh color and paper, Extremely Fine, a choice variety of this scarcer variety. *SMQ* \$1,200 without a premium for the variety. **\$300+**

Expertization: with 1997 P.F. certificate and 2017 P.S.E. certificate graded XF 90J.



- 132 ★ 1901, 10¢ Pan-American. (299).** Original gum very lightly hinged, outstanding centering, warm fresh color, Extremely Fine, choice. *SMQ* \$325. **\$115**

Expertization: with 2022 P.S.E. certificate graded XF-SUP 95.





- 133 ★★ 1901, 10¢ Pan-American. (299). Original gum never hinged, beautifully centered, rich colors, exceptionally fresh, Extremely Fine. **\$300**

### 1902-06 REGULAR ISSUES



- 134 ★ 1902 issue, 1¢-13¢. (300-308). Original gum few light hinge remnants, 2¢ never hinged, well centered and fresh throughout, Very Fine to Extremely Fine. **\$424**



- 135 ★★ 1903, 1¢ blue green. (300). Original gum never hinged, perfectly centered within wide margins, bright and fresh, Extremely Fine. *SSV \$300 (SMQ \$225)*. **\$30**

Expertization: with 2011 P.F. certificate graded XF-SUP 95 XQ.



- 136 ★★ 1903, 3¢ bright violet. (302). Original gum never hinged, outstanding centering within extra large balanced margins, rich color, sharp impression, Extremely Fine, a marvelous gem only nine higher and no 100s. *SMQ \$1,275*. **\$140**

Expertization: with 1997 P.F. certificate and 2008 P.S.E. certificate, the latter graded XF-SUP 95J.



- 137 ★★ 1903, 4¢ brown. (303).** Original gum never hinged, beautifully centered, vivid deep color, fresh and choice, Extremely Fine, only seven higher and no 100s. *SMQ \$1,150.* **\$140**  
 Expertization: **with 2007 P.S.E. certificate graded XF-SUP 95.**



- 138 ★★ 1903, 5¢ blue. (304).** Original gum never hinged, incredibly intense color and bright white paper, Extremely Fine, gorgeous stamp. *SSV \$350 (SMQ \$400).* **\$150**  
 Expertization: **with 2014 P.F. certificate graded XF 90XQ.**



- 139 ★★ 1902, 8¢ violet black. (306).** Original gum never hinged, choice centering, prooflike color and impression, an Extremely Fine gem. *SSV \$875 (SMQ \$800).* **\$110**  
 Expertization: **with 2022 P.F. certificate graded XF-SUP 95.**



- 140 ★★ 1903, 10¢ pale red brown. (307).** Original gum never hinged, flawless centering within well oversized margins, prooflike color and impression, Extremely Fine. *SMQ \$1,650.* **\$150**

A MAGNIFICENT 10¢ 1902 ISSUE— SUPERB STAMP IN EVERY RESPECT, THE ONLY ONE AT THIS GRADE AND ONLY ONE HIGHER (98J).

Expertization: **with 2006 P.F. certificate and 2011,2019 P.S.E. certificates,all graded XF-SUP 95J.**



- 141 ★★ 1902, 13¢ purple black. (308).** Original gum never hinged, exceptional centering within very wide margins, fresh intense color, an Extremely Fine to Superb gem. *SMQ \$1,400.* **\$100**  
 Expertization: **with 2008 P.S.E. certificate graded XF-SUP 95J.**



- 142 ★ 1903, \$1 black. (311).** Original gum lightly hinged, excellent centering within the largest margins imaginable, intense color, fresh Extremely Fine, only four higher and no 100s. *SMQ \$1,600.* **\$600**  
 A SPECTACULAR JUMBO, QUITE UNLIKE ANY WE HAVE SEEN.  
 Expertization: **with 2004 P.F. certificate and 2005 P.S.E. certificate, the latter graded XF-SUP 95.**



- 143 ○ 1903, \$2 dark blue. (312).** Beautifully centered within wide margins, rich color, neat cancel, Extremely Fine, only nine graded higher. *SMQ \$600.* **\$200**  
 Expertization: **with 2008 P.S.E. certificate graded XF 90.**



- 144 ★★ 1908, 5¢ blue, imperf. (315).** Original gum never hinged, moderate gum toning, otherwise, rich color, perfectly balanced margins, Extremely Fine. **\$600**



- 145 ★★ 1903, 2¢ carmine, type I. (319).** Original gum never hinged, beautifully centered within wide margins, exceptional color and freshness, an Extremely Fine gem. *SMQ \$275.* **\$15**  
 Expertization: **with 2022 P.S.E. certificate graded XF-SUP 95.**



- 146** ○ **Selection of 19th used regular issues.** Nine stamps, including 69, 100, 163, 165, selected for choice appearance, couple reperfs, trivial flaws, most VF-XF. three different certs. **Estimate 400 - 500**



- 147** BK★★ **1903, 2¢ carmine, type II, booklet pane of 6. (319Fh).** Position c, original gum never hinged, quite well centered with wide balanced margins, fresh and crisp, Very Fine. **\$1,500**

A CHOICE EXAMPLE OF THE CARMINE TYPE II BOOKLET PANE WHICH IS SELDOM FOUND IN THIS PRIME NEVER HINGED CONDITION.

Expertization: **with 2022 P.F. certificate.**

## 1904 -1907 COMMEMORATIVE ISSUES



- 148 ★★ 1904, 1¢ Louisiana Purchase. (323). Upper right wide corner margin single, original gum never hinged, precise centering within true jumbo margins, rich color, Extremely Fine, a truly impressive corner single. *SMQ* \$800. **\$60**

Expertization: with 2008 P.S.E. certificate graded XF-SUP 95J.



- 149 ★★ 1904, 1¢ Louisiana Purchase. (323). Original gum never hinged, beautifully centered, wide margins, deep color, fresh and choice Extremely Fine. *SSV* \$650 (*SMQ* \$600). **\$60**

Expertization: with 1996, 2016 P.F. certificates, the latter graded XF-SUP 95XQ.



- 150 ★★ 1904, 1¢ Louisiana Purchase. (323). Original gum, excellent centered within large margins for this, rich color, an Extremely Fine gem. *SSV* \$175 (*SMQ* \$175). **\$60**

Expertization: with 2022 P.F. certificate graded XF 90.



- 151 ★★ 1904, 2¢ Louisiana Purchase. (324). Original gum never hinged, wonderfully centered within unusually large margins for this issue, lovely bright color, Extremely Fine, a lovely gem at the very top of its grade. *SMQ* \$275. **\$60**

Expertization: with 2021 P.S.E. certificate graded XF 90J.



- 152 ★★ 1904, 3¢ Louisiana Purchase. (325).** Wide top margin single with imprint, original gum never hinged, outstanding centering, rich color and a fine impression, fresh and choice, an Extremely Fine gem. *SMQ* \$1,850.

**\$170**

Expertization: with 2007 P.S.E. certificate graded XF-SUP 95J.



- 153 ★★ 1904, 3¢ Louisiana Purchase. (325).** Original gum never hinged, beautifully centered, post offices fresh and choice, Extremely Fine. *SSV* \$450 (*SMQ* \$475).

**\$170**

Expertization: with 2001, 2022 P.F. certificates, the latter graded XF 90.



- 154 ★★ 1904, 5¢ Louisiana Purchase. (326).** Original gum never hinged, beautiful color, balanced margins, fresh Extremely Fine. *SSV* \$525 (*SMQ* \$525).

**\$180**

Expertization: with 2022 P.F. certificate graded XF 90.





- 155 ★★ 1904, 10¢ Louisiana Purchase. (327).** Wide upper right corner margin single, beautifully centered within large margins, lovely fresh color and paper, Extremely Fine, a beautiful corner margin single. *SMQ* \$1,250. **\$300**

Expertization: with 1990 P.F. certificate and 2017 P.S.E. certificate, the latter graded XF 90J.



- 156 ★★ 1904, 10¢ Louisiana Purchase. (327).** Original gum never hinged, exceptionally well centered, vivid deep color on very fresh paper, an Extremely Fine gem at the very top of its grade. *SSV* \$700 (*SMQ* \$750). **\$300**

Expertization: with 2022 P.F. certificate graded XF 90.



157



158

- 157 ★★ 1907, 1¢ Jamestown. (328).** Original gum never hinged, outstanding centering especially for this notoriously off-center issue, brilliant color and paper, Extremely Fine, choice. *SMQ* \$1,000. **\$75**  
Expertization: with 2022 P.S.E. certificate graded XF-SUP 95.

- 158 ★★ 1907, 1¢ Jamestown. (328).** Original gum never hinged, excellent centering within huge margins for any Jamestown stamp, gorgeous rich color, an Extremely Fine beauty. *SMQ* \$700. **\$75**  
Expertization: with 2014 P.S.E. certificate graded XF 90J.



- 159 ★★ 1907, 5¢ Jamestown. (330).** Original gum never hinged, attractive centering for the always difficult 5¢ Jamestown, bright and fresh, F.-V.F. **\$375**

## 1908-1911 WASHINGTON-FRANKLIN ISSUES



- 160 ★★ 1908, 1¢ green, D.L. watermark. (331).** Lower left corner margin single with sideographer's initials, choice centering, large margins, Extremely Fine. *SSV \$170 (SMQ \$165).* **\$16**  
 Expertization: **with 2006 P.F. certificate graded XF-SUP 95.**



- 161 ★★ 1909, 10¢ yellow, D.L. watermark. (338).** Original gum never hinged, well centered, luminous color, Very Fine, most attractive. **\$165**  
 Expertization: **with 1999 P.F. certificate.**



- 162 ★★ 1908, 1¢ green, D.L. watermark, vertical coil. (348).** Guide line pair. Original gum never hinged, well centered, fresh and crisp, F.-V.F. **\$650**



- 163 ★★ 1909, 5¢ blue, D.L. watermark, vertical coil. (351).** Original gum never hinged, beautifully centered, beautiful rich color on bright paper, Extremely Fine, choice. **\$325**  
 Expertization: **with 2021 P.F. certificate.**  
 Provenance: **J.B. Field.**



- 164 ★★ 1909, 2¢ carmine, bluish paper. (358).** Original gum never hinged, precise centering, rich color on deeply blued paper, Extremely Fine, choice, only four graded higher. *SMQ* \$1,025. **\$170**  
 Expertization: with 2006, 2017 P.S.E. certificates, both graded XF-SUP 95.



- 165 ★★ 1909, 2¢ Lincoln. (367).** Original gum never hinged, mathematical centering within huge perfectly balanced margins, rich color, Superb! The only one at this grade and only five graded higher, no 100J. *SMQ* \$350. **\$9**  
 Expertization: with 1995 P.F. certificate for pair and 2006 P.S.E certificate, the latter graded SUP 98.



- 166 ★★ 1909, 2¢ Alaska-Yukon. (370).** Wide right margin plate no. single, original gum never hinged, choice centering within true jumbo margins, gorgeous rich color on bright paper, Extremely Fine. *SMQ* \$190. **\$15**  
 Expertization: with 2008 P.S.E. certificate graded XF-SUP 95J.



- 167 ★★□ 1909, 2¢ Alaska-Yukon, imperf. (371).** Centerline block of four. Original gum never hinged, perfect wide margins with the adjoining stamps all around, Superb. **\$275**



- 168 ○ **1909, 2¢ Alaska-Yukon, imperf. (371).** Huge margins with portions of all adjoining stamps, neat duplex cancel, Superb, scarcer used. *SMQ* \$250. **\$21**

Expertization: **with 2022 P.S.E. certificate graded Gem 100.**



- 169 ★★ **1909, 2¢ Hudson-Fulton. (372).** Original gum never hinged, perfectly centered within unusually wide margins, for this issue, bright color, Superb, seldom seen this choice, only 10 graded higher by the PF and PSE combined. *SSV* \$600 (*SMQ* \$500). **\$21**

Expertization: **with 2022 P.F. certificate graded SUP 98.**



- 170 ★★ **1910, 1¢ green, S.L. watermark. (374).** Bottom margin single with part imprint and star, original gum never hinged, beautifully centered within wide jumbo margins, prooflike color, exceptionally fresh, Extremely Fine, there are no 100s. *SMQ* \$250. **\$14**

Expertization: **with 2003 P.F. certificate and 2017 P.S.E. certificate, the latter graded XF-SUP 95J.**



- 171 ★★ **1910, 2¢ carmine, S.L. watermark. (375).** Bottom margin plate no. 5627 single, original gum never hinged, outstanding centering within incredibly wide margins, rich color, fresh, an Extremely Fine jumbo. *SMQ* \$235. **\$14**

Expertization: **with 2010 P.S.E. certificate graded XF-SUP 95J.**



- 172 ★★ 1911, 4¢ brown, S.L. watermark. (377). Wide top margin single with part imprint, original gum never hinged, flawless centering within jumbo margins, fresh intense color, Superb, the highest graded to date. *SSV unpriced (SMQ \$1,600)*. **\$65**

Expertization: with 1990 2002, 2016 P.F. certificates, the last graded SUP 98J.



- 173 ★ 1911, 4¢ brown, S.L. watermark. (377). Original gum, mathematical centering within large perfectly balanced margins, choice color and impression, a Superb jumbo. *Unpriced in SMQ as 100J, \$300 as regular 100*. **\$27**

Expertization: with 2022 P.S.E. certificate graded Gem 100J.



- 174 ★★ 1911, 15¢ pale ultramarine, S.L. watermark. (382). Original gum never hinged, quite nicely centered, exceptionally fresh color and paper, Very Fine. **\$500**



- 175 ★ 1910, 1¢ green, S.L. watermark, horizontal coil. (387). Guide line pair. Original gum barely hinged if at all, incredible centering and exceptionally fresh, Extremely Fine. *SSV \$3,550 (unpriced in SMQ)*. **\$1,250**

A STUNNING EXAMPLE OF THIS RARE LINE PAIR, THE HIGHEST GRADED BY EITHER BODY AND SHARES THIS GRADE WITH ONE EACH FROM THE PF AND PSE.

Expertization: with 2022 P.F. certificate graded XF-SUP 95.



- 176 ★★ 1910, 1¢ green, S.L. watermark, vertical coil. (390). Guide line pair. Original gum never hinged, precise centering within perfectly balanced margins, pristine color and paper, Superb. *SSV* \$375 (*SMQ* \$375).  
\$72

Expertization: with 2022 P.F. certificate graded SUP 98.



- 177 ★★ 1910, 2¢ carmine, S.L. watermark, vertical coil. (391). Pair. Original gum never hinged, excellent centering within balanced margins, wonderfully fresh, Extremely Fine. *SSV* \$500 (*SMQ* \$500).  
\$240  
Expertization: with 1996 (for strip of 6), 2022 P.F. certificates, the latter graded XF 90.



- 178 ○ 1910, 1¢ green, S.L. watermark, horizontal coil. (392). Guide line pair. Brilliant rich color on the whitest of papers, neat grid cancel, F.-V.F.  
\$500



- 179 ○ 1911, 3¢ deep violet, S.L. watermark, horizontal coil. (394). Superb centering within wide margins, beautiful color and impression, neat Ohio machine cancel, Extremely Fine, gorgeous used coil single. *SSV* \$350 as a regular 95 (*SMQ* \$475).  
\$65  
Expertization: with 2022 P.F. certificate graded XF-SUP 95J.





- 180** ○ **1911, 3¢ deep violet, S.L. watermark, horizontal coil. (394).** Outstanding centering, color, and freshness, neat partial straight line postmark, Extremely Fine, a choice used gem, five others share this grade and only one is graded higher (98). *SMQ* \$350. **\$65**

Expertization: **with 2022 P.S.E. certificate graded XF-SUP 95.**



- 181** ★ **1912, 4¢ brown, S.L. watermark, horizontal coil. (395).** Pair. Original gum very lightly hinged, excellent centering within wide margins, beautiful fresh color, Extremely Fine. *SSV* \$240 (*SMQ* \$210). **\$150**

Expertization: **with 1986, 2022 P.F. certificates, the latter graded XF 90.**



- 182** ★★ **1912, 4¢ brown, S.L. watermark, horizontal coil. (395).** Guide line pair with portions of adjoining stamps on both sides. Original gum never hinged, beautifully centered, lovely rich color, there is an almost imaginary trace of a hinge mark on the piece of adjoining stamp at left, not noted in either certificate, Extremely Fine, a beautiful pair. *SMQ* as graded \$3,350. **\$1,100**

Expertization: **with 1988, 2021 P.S.E. certificates, the latter graded XF-SUP 95.**



- 183** ★ **1912, 4¢ brown, S.L. watermark, horizontal coil. (395).** Guide line pair. Original gum, hinge remnant, beautifully centered, rich color, Extremely Fine. **\$475**



- 184** ★★ **1913, 5¢ blue, S.L. watermark, horizontal coil. (396).** Original gum never hinged, excellent centering, gorgeous rich color, Extremely Fine, a choice gem. *SMQ* \$550. **\$135**

Expertization: **with 1988 P.F. certificate and 2022 P.S.E. certificate, the latter graded XF-SUP 95.**



- 185 ★ 1913, 5¢ blue, S.L. watermark, horizontal coil. (396).** Guide line pair. Original gum very lightly hinged, prooflike color, impeccably fresh, F.-V.F. **\$425**



- 186 ★ 1913, 5¢ blue, S.L. watermark, horizontal coil. (396).** Pair. Original gum, perfect centering with wide balanced margins, stunning rich color, Extremely Fine. *SSV* \$350 (*SMQ* \$325). **\$160**  
Expertization: with 1988, 2022 P.F. certificates, the latter graded XF-SUP 95.

## 1913-1915 PANAMA-PACIFIC ISSUE



- 187 ★★ 1913, 1¢ Panama-Pacific, perf 12. (397). Original gum never hinged, perfect centering, prooflike color and impression, a Superb gem in every detail, only seven graded higher. *SMQ \$1,200.* **\$35**  
 Expertization: with 2009 P.S.E. certificate graded SUP 98J.



- 188 ★★ 1913, 1¢ Panama-Pacific, perf 12. (397). Original gum never hinged, impeccable centering within wide jumbo margins, post office fresh, an Extremely Fine gem. *SMQ \$300.* **\$350**  
 Expertization: with 2015 P.S.E. certificate graded XF-SUP 95J.



- 189 ○ 1913, 1¢ Panama-Pacific, perf 12. (397). Choice centering within enormous margins, bright color and paper, neat duplex cancel, Extremely Fine. *SMQ \$160.* **\$2**  
 Expertization: with 2014 P.S.E. certificate graded XF-SUP 95J.



- 190 ★★ 1913, 2¢ Panama-Pacific, perf 12. (398). Wide top plate no. 6320 single, original gum never hinged, essentially perfectly centered within jumbo margins, deep color, Extremely Fine. *SSV unpriced SMQ \$275.* **\$35**  
 Expertization: with 2007 P.F. certificate and 2017 P.S.E. certificate, both graded XF-SUP 95J.



- 191 ★★ 1913, 5¢ Panama-Pacific, perf 12. (399).** Original gum never hinged, precise centering, stunning rich color, Extremely Fine, beautiful stamp. *SMQ \$650.* **\$160**  
 Expertization: **with 2002 P.F. certificate and 2006 P.S.E. certificate, latter graded XF-SUP 95.**



- 192 ★★ 1914, 1¢ Panama-Pacific, perf 10. (401).** Original gum never hinged, perfect centering, choice color, bright and fresh, Superb, only two graded higher. *SMQ \$900.* **\$60**  
 Expertization: **with 1999, 2006 P.F. certificates and 2008 P.S.E. certificate, last two graded SUP 98.**



- 193 ★★ 1914, 1¢ Panama-Pacific, perf 10. (401).** Original gum never hinged, beautifully centered, wide margins, post office fresh, an Extremely Fine gem. *SMQ \$325.* **\$60**  
 Expertization: **with 2002 P.S.E. certificate graded XF-SUP 95.**



- 194 ★★ 1915, 2¢ Panama-Pacific, perf 10. (402).** Left plate no. 6447 single, original gum never hinged, choice centering, lovely fresh color and paper, Extremely Fine. *SSV \$850 (SMQ \$950).* **\$170**  
 Expertization: **with 2011 P.F. certificate graded XF-SUP 95XQ.**



- 195 (★) 1915, 2¢ Panama-Pacific, perf 10. (402).** Unused, skillfully regummed, perfectly balanced margins, lovely fresh pastel shade, an unbelievable unused jumbo, unpriced unused, Superb. **\$70 as O.G.**

THIS IS THE ONLY UNUSED/MINT 402 CERTIFIED AS A 100J BY EITHER THE PF OR PSE.

Expertization: **with 2021 P.S.E. certificate graded Gem 100J.**



- 196 ★★ 1915, 5¢ Panama-Pacific, perf 10. (403).** Right plate no. 6134 single, original gum never hinged, beautifully centered, rich color, bright paper, Extremely Fine. *SMQ* \$1,350. **\$400**  
Expertization: with 2013 P.S.E. certificate graded XF-SUP 95.



- 197 ★★ 1915, 10¢ Panama-Pacific, perf 10. (404).** Original gum never hinged, beautifully centered, bright rich color, expertly reperforated at right, Extremely Fine appearance. **\$1,650**

## 1912-1920 WASHINGTON-FRANKLIN ISSUES



- 198 ★★ 1912, 1¢ green, S.L. watermark, perf 12. (405).** Right margin single, original gum never hinged, choice color and centering, an Extremely Fine little gem. *SMQ \$200.* **\$15**

Expertization: **with 2006 P.S.E. certificate graded XF-SUP 95.**



- 199 ★★ 1912, 2¢ carmine, S.L. watermark, perf 12. (406).** Original gum never hinged, perfectly centered within large balanced margins, stunning rich color, an Extremely Fine gem. *SSV \$135 (SMQ \$200).* **\$15**

Expertization: **with 2022 P.F. certificate graded XF-SUP 95Q.**



- 200 ★★ 1914, 7¢ black, S.L. watermark, perf 12. (407).** Original gum never hinged, beautifully centered, stunning intense color on contrasting bright white paper, o.g., never hinged, Extremely Fine, most handsome. *SSV \$210 (SMQ \$225).* **\$150**

Expertization: **with 2022 P.F. certificate graded VF-XF 85.**



- 201 ★★ 1912, 2¢ carmine, S.L. watermark, vertical coil. (411).** Guide line pair. Original gum never hinged, essentially perfectly centered, wonderfully rich color, Extremely Fine, a gem line pair. *SSV \$500 (SMQ \$425).* **\$55**

Expertization: **with 1996, 2022 P.F. certificates, the latter graded XF-SUP 95.**





- 202 ★★ 1912, 8¢ pale olive green, S.L. watermark, perf 12. (414).** Original gum never hinged, beautifully centered within the largest margins we have seen on the 1912 8¢, beautiful rich color, Extremely Fine, a stunning jumbo. *SMQ* \$875. **\$100**

Expertization: with 1995 P.F. certificate and 2006 P.S.E. certificate, the latter graded XF-SUP 95J.



- 203 ★★ 1914, 12¢ claret brown, S.L. watermark, perf 12. (417).** Precise centering, brilliant color and a fine impression, Extremely Fine, lovely stamp. *SSV* \$550 (*SMQ* \$625). **\$100**

Expertization: with 1999, 2022 P.F. certificates, the latter graded XF-SUP 95.



- 204 ★ 1914, 20¢ ultramarine, S.L. watermark, perf 12. (419).** Original gum, outstanding centering, bright color and paper, Extremely Fine. *SSV* \$290 (*SMQ* \$275). **\$190**

Expertization: with 2022 P.F. certificate graded XF 90.



- 205 ★ 1914, 30¢ orange red, S.L. watermark, perf 12. (420).** Barely hinged, absolutely perfectly centered within wide margins, vivid rich color, stunning and Superb! only one other at this grade and none higher. *SMQ* \$825. **\$115**

Expertization: with 2008, 2014 P.S.E. certificates, both graded Gem 100.



- 206 ★ 1914, 50¢ violet, S.L. watermark, perf 12. (421).** Original gum, beautifully centered within large margins, glowing color on fresh paper, Extremely Fine. *SSV* \$400 (*SMQ* \$450). **\$350**

Expertization: with 2022 P.F. certificate graded VF-XF 85.



- 207 ★★ 1914, 1¢ green, S.L. watermark, perf 10. (424). Top margin single, original gum never hinged, essentially perfectly centered in jumbo margins, prooflike color and impression, an Extremely Fine gem, and would seem to have deserved a higher score. *SMQ* \$130. **\$4**  
 Expertization: with 2007 P.S.E. certificate graded XF-SUP 95.



- 208 ★ 1914, 7¢ black, S.L. watermark, perf 10. (430). Original gum, beautifully centered, intense prooflike color and impression, Extremely Fine. *SSV* \$220 (*SMQ* \$225). **\$85**  
 Expertization: with 2022 P.F. certificate graded XF-SUP 95.



- 209 ★★ 1914, 30¢ orange red, S.L. watermark, perf 10. (439). Original gum never hinged, perfectly centered, brilliant color, Extremely Fine, we are not sure why this wasn't given a 95. *SMQ* \$1,050. **\$500**  
 Expertization: with 2021 P.S.E. certificate graded XF 90.



- 210 ★★ 1914, 3¢ violet, S.L. watermark, horizontal flat plate coil. (445). Original gum never hinged, well centered within wide margins, deep rich color, Extremely Fine. *SSV* \$900 (*SMQ* \$975). **\$500**  
 Expertization: with 2022 P.F. certificate graded XF 90.



- 211 ★ 1914, 3¢ violet, S.L. watermark, horizontal flat plate coil. (445). Pair. Original gum, choice centering and margins, stunning color, fresh Extremely Fine, a beautiful pair, only five graded higher. *SMQ* \$1,300. **\$500**

Expertization: with 2022 P.S.E. certificate graded XF-SUP 95.



- 212 ★ 1914, 4¢ brown, S.L. watermark, horizontal flat plate coil. (446). Pair. Original gum lightly hinged, bright and fresh, F.-V.F. **\$300**



- 213 ○ 1914, 4¢ brown, S.L. watermark, horizontal flat plate coil. (446). Pair. Excellent centering, wide margins, rich color, trivial tiny and unnoticeable surface abrasion (not mentioned in cert), choice Extremely Fine appearance. *SMQ* \$925 as graded. **\$425**

Expertization: with 2008 P.S.E. certificate graded XF 90.



- 214 ★★ 1916, 2¢ carmine, type III, S.L. watermark, vertical rotary press coil. (450). Joint line pair. Original gum never hinged, fresh and crisp, F.-V.F. **\$550**



- 215 ★ 1914, 2¢ carmine rose, type I, S.L. watermark, horizontal rotary press coil. (453). Original gum light hinge remnant, choice color and centering, balanced margins, Extremely Fine. *SSV* \$325 (*SMQ* \$325). **\$140**  
Expertization: with 2022 P.F. certificate graded XF-SUP 95.



- 216 ★★ 1915, 2¢ carmine, type III, S.L. watermark, horizontal rotary press coil. (455). Joint line pair. Original gum never hinged, beautifully centered, bright and deep color, Very Fine to Extremely Fine, choice. **\$105**



- 217 ★ 1916, 3¢ violet, S.L. watermark, horizontal rotary press coil. (456). Original gum hinge remnant, excellent centering, bright shade, Extremely Fine. *SSV* \$325 (*SMQ* \$325). **\$250**  
Expertization: with 2022 P.F. certificate graded XF 90.



- 218 ★ 1915-1916, 4¢ and 5¢ S.L. watermark, horizontal rotary press coils. (457-458). Pair of each. Original gum lightly hinged, outstanding centering within unusually wide margins all around, Extremely Fine, incredible pair of rotary coil pairs. **\$145**



- 219 ★ 1916, 5¢ blue, S.L. watermark, horizontal rotary press coil. (458).** Joint line pair. Original gum lightly hinged, choice centering and color, Extremely Fine, a gem line pair, which is undergraded in our opinion. *SSV \$310 (SMQ \$325).* **\$180**

Expertization: **with 1999, 2022 P.F. certificates, the latter graded XF-SUP 95.**



- 220 ★★ 1914, 2¢ carmine, S.L. watermark, imperf horizontal coil. (459).** Original gum never hinged, post office fresh an choice, Extremely Fine. *SMQ \$300.* **\$400**

Expertization: **with 2022 P.S.E. certificate graded XF 90.**



- 221 ★★ 1914, 2¢ carmine, S.L. watermark, imperf horizontal coil. (459).** Horizontal pair. Original gum never hinged, slight natural gum skips, balanced margins, rich color, Very Fine. **\$875**



- 222 ○ 1915, \$1 violet black, D.L. watermark, perf 10. (460).** Exceptional centering, rich color with a detailed impression, neat double oval cancel, Extremely Fine a choice used gem, between the PF and PSE, a total of only four used singles graded higher with the highest being a 98. *SSV \$800 (SMQ \$850).* **\$140**

Expertization: **with 2022 P.F. certificate graded XF-SUP 95.**



- 223 ★★ 1916, 10¢ orange yellow, unwatermarked, perf 10. (472).** Original gum never hinged, light natural gum bend not noted in certificate, beautifully centered within wide margins, bright glowing color, Extremely Fine. *SMQ unpriced as 90J, \$450 as regular 90 and \$1,400 as 95.* **\$250**

Expertization: **with 2022 P.S.E. certificate graded XF 90J.**



- 224 ★ 1916, \$1 violet black, unwatermarked, perf 10. (478). Original gum lightly hinged, choice centering, lovely deep color, Extremely Fine, only eight graded higher, highest is 98. *SMQ \$1,100.* **\$600**  
 Expertization: with 2021 P.S.E. certificate graded XF-SUP 95.



- 225 ★★ 1917, \$5 light green, perf 10. (480). Original gum never hinged, flawless centering, lovely rich color, Extremely Fine, a choice perf 10 \$5. *SMQ \$1,100.* **\$375**  
 Expertization: with 2014 P.S.E. certificate graded XF-SUP 95.



- 226 ★★ 1916, 2¢ carmine, type II, unwatermarked, vertical rotary press coil. (487). Joint line pair. Original gum never hinged, great color, fresh F.-V.F. **\$275**



- 227 ★★ 1918, 3¢ violet, type II, unwatermarked, horizontal rotary press coil. (494). Joint line pair. Original gum never hinged, post office fresh, well centered, choice Very Fine. **\$160**  
 Expertization: with 1980 P.F. certificate.  
 Provenance: Floyd.





- 228** ○ **1917, 1¢ green, unwatermarked, perf 11. (498).** Beautifully centered within huge margins, rich color, light cancel, a gem Extremely Fine jumbo. *SMQ* \$120. **\$1**

Expertization: **with 2006 P.S.E. certificate graded XF-SUP 95J.**



- 229** ★★ **1917, 2¢ rose, type I, unwatermarked, perf 11. (499).** Original gum never hinged, choice centering, wide margins, rich color, an Extremely Fine jumbo. *SMQ* \$130. **\$1**

Expertization: **with 2007 P.S.E. certificate graded XF-SUP 95J.**



- 230** ★★ **1917, 7¢ black, unwatermarked, perf 11. (507).** Original gum never hinged, precise centering within perfectly balanced margins, bright intense color, Extremely Fine. *SMQ* \$375. **\$55**

Expertization: **with 2005 P.S.E. certificate graded XF-SUP 95.**



- 231** ★★ **1917, 7¢ black, unwatermarked, perf 11. (507).** Original gum never hinged, beautifully centered especially for the always difficult 7¢, intense color on bright paper, Extremely Fine. *SMQ* \$325. **\$55**

Expertization: **with 2022 P.S.E. certificate graded XF-SUP 95.**



- 232** ★★ **1917, 8¢ olive bister, unwatermarked, perf 11. (508).** Original gum never hinged, essentially perfectly centered, lovely fresh pastel shade, an Extremely Fine gem. *SSV* \$175 (*SMQ* \$175). **\$25**

Expertization: **with 2022 P.F. certificate graded XF-SUP 95.**



- 233 ★★ 1917, 9¢ salmon red, unwatermarked, perf 11. (509).** Original gum never hinged, beautifully centered, luminous color on white paper, Extremely Fine. *SMQ* \$185. **\$25**  
 Expertization: **with 2004 P.S.E. certificate graded XF-SUP 95.**



- 234 ★★ 1917, 10¢ orange yellow, unwatermarked, perf 11. (510).** Original gum never hinged, incredible centering within very wide beautifully balanced margins, deep golden color, simply Superb, the highest grade awarded to date and shares this grade with only three others. *SMQ* \$1,200. **\$34**  
 Expertization: **with 2022 P.S.E. certificate graded SUP 98J.**



- 235 ★★ 1917, 11¢ light green, unwatermarked, perf 11. (511).** Original gum, perfectly centered within wide margins, exceptionally fresh and choice, Extremely Fine, certainly at the top of its grade. *SSV* \$140 (*SMQ* \$150). **\$17**  
 Expertization: **with 2022 P.F. certificate graded XF-SUP 95.**



- 236 ★★ 1917, 12¢ claret brown, unwatermarked, perf 11. (512).** Original gum never hinged, excellent centering, rich color, Extremely Fine. *SMQ* \$150. **\$17**  
 Expertization: **with 2004 P.S.E. certificate graded XF-SUP 95.**



- 237 ★★ 1917, 12¢ brown carmine, unwatermarked, perf 11. (512a). Original gum never hinged, beautifully centered, brilliant color, choice Extremely Fine. *SSV \$135 (SMQ \$165)*. **\$19**  
 Expertization: with 2022 P.F. certificate graded XF-SUP 95.



- 238 ★ 1917, 50¢ red violet, unwatermarked, perf 11. (517). Bottom margin single, excellent centering, superb color and freshness, Extremely Fine, beautiful stamp. *SSV \$475 (SMQ \$500)*. **\$120**  
 Expertization: with 2006 P.F. certificate graded XF-SUP 95.



- 239 ★★ 1917, \$1 violet brown, unwatermarked, perf 11. (518). Original gum never hinged, choice centering within wide margins, rich color and a detailed impression, Superb, only six graded higher. *SMQ \$2,250*. **\$95**  
 Expertization: with 2022 P.S.E. certificate graded SUP 98J.



- 240 ★ 1917, 2¢ carmine, D.L. watermark, perf 11. (519). Original gum light hinge remnant, choice centering, bright and fresh with lovely deep color, Extremely Fine, quite scarce this choice, none graded higher by the PF and only five graded higher by the PSE (98 is highest). *SSV \$850 (SMQ \$800)*. **\$425**  
 Expertization: with 2022 P.F. certificate graded XF-SUP 95.



- 241 ★ 1918, \$2 orange red & black. (523). Original gum, bright undiminished color, well centered, fresh Very Fine, handsome stamp. **\$525**



- 242 ★★ 1918, \$5 deep green & black. (524). Original gum never hinged, mathematical centering, gorgeous fresh color, Extremely Fine, only three graded higher (the highest is 100). *SMQ* \$2,650. **\$340**

A STUNNING MINT EXAMPLE OF THE 1918 BICOLOR \$5.

Expertization: with 2008 P.S.E. certificate graded SUP 98.



- 243 ★★ 1918, \$5 deep green & black. (524). Original gum never hinged, beautifully centered, post office fresh, Extremely Fine. *SMQ* \$550. **\$340**

Expertization: with 2005 P.F. certificate for the centerline block and 2017 P.S.E. certificate, the latter graded XF 90.



- 244 ★★ 1918, \$5 deep green & black. (524). Top plate no. 8178 single, original gum never hinged, beautiful color, Very Fine. **\$340**



- 245 ★★ 1918, 2¢ carmine, type Va, offset printing. (528). Original gum never hinged, perfectly centered within positively huge margins, beautiful color on bright paper, Superb, a beauty, the highest grade awarded to date with seven others at this grade. *SMQ* \$875. **\$22**

Expertization: with 1994 P.F. certificate and 2017 P.S.E. certificate, the latter graded SUP 98J.



- 246 ★★□ 1918, 2¢ carmine, type VII, offset printing. (528B). Two plate number blocks of six (left plate no. 12685 and right plate no. 12697). Original gum never hinged, fresh F.-V.F. **\$400**



- 247 ★★ 1919, 3¢ Victory. (537). Original gum never hinged, mathematical centering within wide perfectly balanced margins, exceptionally fresh, Superb, only seven graded higher. *SMQ* \$400. **\$20**  
Expertization: with 2005 P.S.E. certificate graded SUP 98J.



- 248 ★□ 1919, 1¢ green, rotary press coil waste, vertical pair, imperf horizontally. (538a). Top plate no. 13611 block of four. Original gum lightly hinged, nicely centered for this, tiny abrasion LR stamp, otherwise, fresh F.-V.F., scarce. **\$900**



- 249 ★□ 1919, 2¢ carmine rose, type III, rotary press coil waste, vertical pair, imperf horizontally. (540a). Top plate no. 13741 and star block of four. Original gum hinge remnant, light crease across bottom pair, Fine, scarce. **\$1,050**



- 250 ★★ 1920, \$2 carmine & black. (547). Original gum never hinged, flawless centering, fresh color and paper, Extremely Fine. *SMQ* \$800. **\$275**  
Expertization: with 1999 P.F. certificate for pair and 2006 P.S.E. certificate, the latter graded XF-SUP 95.



- 251 ★★ 1920, \$2 carmine & black. (547). Top plate no. 8177 single, original gum never hinged, very well centered, rich color, choice Very Fine. **\$275**



- 252 ★★ 1920, 1¢ Pilgrim. (548). Original gum never hinged, impeccable centering within enormous margins, the largest than we have ever seen on a 1¢ Pilgrim, bright and fresh, a Superb jumbo, the highest grade awarded to date and only six others share this grade. *SMQ* \$700. **\$10**  
Expertization: with 2007 P.S.E. certificate graded SUP 98J.



## 1922-1925 REGULAR ISSUE



- 253 ★★ 1925, ½¢ Nathan Hale. (551). Original gum never hinged, perfectly centered within impressively large margins, a Superb jumbo. *SMQ* \$150. **\$1**

Expertization: with 2005 P.S.E. certificate graded SUP 98J.



- 254 ★★ 1922 regular issue, 3¢//5¢. (555-573). 11 different, original gum never hinged, excellent centering throughout, Extremely Fine. **\$590**



- 255 ★★ 1923, 3¢ Lincoln. (555). Original gum never hinged, beautifully centered within large margins, exceptionally fresh with rich color, an Extremely Fine gem. *SSV* \$260 (*SMQ* \$275). **\$27**

Expertization: with 2022 P.F. certificate graded XF-SUP 95.



- 256 ★★ 1923, 3¢ Lincoln. (555). Right margin single, original gum never hinged, choice color and centering, Extremely Fine, very pretty stamp. *SMQ* \$275. **\$27**

Expertization: with 2008 P.S.E. certificate graded XF-SUP 95.



- 257 ★★ 1923, 8¢ Grant. (560). Original gum never hinged, excellent centering, post office fresh with rich color, an Extremely Fine gem. *SMQ* \$400. **\$80**  
 Expertization: with 2022 P.S.E. certificate graded XF-SUP 95.



- 258 ★★ 1923, 10¢ Monroe. (562). Original gum never hinged, beautifully centered with very wide margins, positively glowing color, an Extremely Fine jumbo. *SSV* unpriced in the 90J grade (*SMQ* \$160). **\$30**  
 Expertization: with 2022 P.F. certificate graded XF 90J.



- 259 ★★ 1922, 11¢ Hayes, light bluish green color. (563a). Original gum never hinged, perfectly centered within wide margins, lovely pastel shade, Superb! The highest graded by the PF and the sole example and only two graded higher by the PSE (98J and 100). *SSV* \$240 (*SMQ* \$225). **\$1**  
 Expertization: with 2022 P.F. certificate graded SUP 98.



- 260 ★★ 1922, 15¢ Statue of Liberty. (566). Original gum never hinged, mathematically centered in large balanced margins, fresh and choice, an Extremely Fine gem. *SSV* \$180 (*SMQ* \$190). **\$35**  
 Expertization: with 2022 P.F. certificate graded XF-SUP 95Q.



- 261 ★★ 1923, 30¢ Buffalo. (569). Right plate no. 17448 single, original gum never hinged, choice centering, beautiful color with a highly detailed impression, Superb. *SSV* \$900 (*SMQ* \$850). **\$50**  
 Expertization: with 2022 P.F. certificate graded SUP 98.



- 262 ★★ 1923, \$5 America. (573).** Top margin single with plate no. 14327, original gum (lightly hinged and light bend in selvage only), essentially perfectly centered within large margins, great color, choice, Extremely Fine gem *SMQ* \$850. **\$180**

Expertization: **with 2021 P.S.E. certificate graded XF-SUP 95J.**

## 1923-1934 ISSUES



- 263 ★★ 1923, 1¢ Franklin, rotary press coil waste, perf 11 x 10. (578). Original gum never hinged, choice centering especially for this difficult coil waste issue, bright and fresh, Extremely Fine. *SSV \$200 (SMQ \$225)*. **\$150**

Expertization: with 2022 P.F. certificate graded VF-XF 85.



- 264 ★★ 1923, 2¢ Washington, rotary press coil waste, perf 11 x 10. (579). Original gum never hinged, outstanding centering especially for this difficult coil waste issue, luminous color, Extremely Fine, a true gem, only 10 graded higher by the PF and PSE combined and there are no 100s. *SSV \$750 (SMQ \$775)*. **\$140**
- Expertization: with 2022 P.F. certificate graded XF-SUP 95.



- 265 ★★ 1923, 2¢ Washington, rotary press coil waste, perf 11 x 10. (579). Original gum never hinged, beautifully centered for this challenging coil waste issue, lovely color, Very Fine to Extremely Fine. **\$140**



- 266 ★★ 1923-26, Rotary press definitives, perf 10, 1¢ to 10¢ complete. (581-591). Complete, original gum never hinged, a truly hand picked set, assembled many years ago, Extremely Fine. **\$371**



- 267 ★★ 1925, 10¢ Monroe, rotary press printing, perf 10. (591). Original gum never hinged, mathematical centering, positively glowing color, full perforations all around, simply Superb! only a combined (PF and PSE) six graded higher. *SSV \$1,200 (SMQ \$1,275).* **\$85**  
 Expertization: with 2022 P.F. certificate graded SUP 98.



- 268 ★★ 1923, 2¢ Washington, rotary press coil waste. (595). Original gum never hinged, excellent centering for this, bright and fresh Very Fine. **\$450**



- 269 ★★ 1923-1929 coils. (597-606 (less 599A)). Complete set of joint line pairs. Original gum never hinged, very carefully selected decades ago, Extremely Fine. **\$189**



- 270 ★ 1929, 2¢ Washington, type II, horizontal rotary press coil. (599A). Joint line pair. Original gum, cert says "previously hinged", in our opinion the pair is never hinged with a bit of offset from another pair, well centered, lovely color, Very Fine. *SSV \$575 (SMQ \$500).* **\$575**  
 Expertization: with 2021 P.F. certificate graded VF 80.





- 271 ▲ 1929, 2¢ Washington, type II, horizontal rotary press coil. (599A). Used joint line pair. Combination type II/type I, tied on piece, choice color, Fine. **\$1,000**

A MOST ATTRACTIVE EXAMPLE OF THE RARE COMBINATION II/I USED JOINT LINE PAIR. THE PF HAS ISSUED ONLY TWO CERTIFICATES FOR USED COMBINATION PAIRS, ONE OF WHICH IS FAULTY.

Expertization: with 2022 P.S.E. certificate.



- 272 ○ 1929, 2¢ Washington, type II, horizontal rotary press coil. (599A). Used joint line pair. Well centered, rich color, couple nibbed perfs, Very Fine. **\$400**



- 273 ★★ 1924, 1¢ Huguenot-Walloon. (614). Original gum never hinged, beautifully centered, post office fresh color and paper, an Extremely Fine gem. *SMQ* \$175. **\$4**

Expertization: with 2006 P.S.E. certificate graded XF-SUP 95.



- 274 ★★ 1924, 5¢ Huguenot-Walloon. (616). Original gum never hinged, mathematically centered within wide balanced margins, choice color and impression, Superb, only seven graded higher. *SMQ* \$700. **\$27**

Expertization: with 2022 P.S.E. certificate graded SUP 98.





- 275 ★★□ 1924, 5¢ Huguenot-Walloon. (616). Wide right plate no. 15755 block of six. Original gum never hinged, beautifully centered, exceptionally fresh color and paper, crisp and intact, Extremely Fine, a choice plate block in every respect. **\$375**



- 276 ★★ 1925, 1¢ Lexington-Concord. (617). Original gum never hinged, perfectly centered, gorgeous color and impression, Superb. *SMQ* \$140. **\$3**  
Expertization: with 2006 P.S.E. certificate graded SUP 98.



- 277 ★★ 1925, 2¢ Lexington-Concord. (618). Bottom plate no. 16814 single, original gum never hinged, outstanding centering, rich color, Superb. *SMQ* \$150. **\$6**  
Expertization: with 2006 P.S.E. certificate graded SUP 98.  
Provenance: Killien.



- 278 ★★ 1925, 5¢ Lexington-Concord. (619). Original gum never hinged, perfectly centered, prooflike color and impression, simply Superb. *SSV* \$290 (*SMQ* \$300). **\$26**  
Expertization: with 2022 P.F. certificate graded SUP 98.



- 279 ★★ **1925, 5¢ Lexington-Concord. (619).** Original gum never hinged, essentially perfectly centered within wide margins, brilliant color, Extremely Fine. *SMQ* \$175. **\$26**  
 Expertization: **with 2006 P.S.E. certificate graded XF-SUP 95J.**  
 Provenance: **Killien.**



- 280 ★★ **1925, 5¢ Norse-American. (621).** Original gum never hinged, perfectly centered and post office fresh, a Superb gem. *SSV* \$240 (*SMQ* \$225). **\$19**  
 Expertization: **with 2007 P.S.E. certificate and 2022 P.F. certificate, both graded SUP 98.**



- 281 ★★ **1925, 5¢ Norse-American. (621).** Right sheet margin single, original gum never hinged, perfectly centered, post office fresh, a Superb gem. *SMQ* \$225. **\$19**  
 Expertization: **with 2015 P.S.E. certificate graded SUP 98.**



- 282 ★★ **1925, 17¢ Wilson. (623).** Right sheet margin single, original gum never hinged, choice centering within unusually wide margins, intense shade, Extremely Fine. *SMQ* \$140. **\$19**  
 Expertization: **with 2007 P.S.E. certificate graded XF-SUP 95J.**



- 283 ★★ 1926, 5¢ Ericsson. (628). Original gum never hinged, perfectly centered within very wide margins, bright color and paper, Superb, only six graded higher. *SMQ* \$225. **\$8**  
 Expertization: with 2013 P.S.E. certificate graded SUP 98J.



- 284 ★★ 1926, White Plains souvenir sheet. (630). Original gum never hinged, incredibly well centered throughout, minimal usual bends and skips, Extremely Fine, an absolutely gem sheet. **\$500**



- 285 ★★ 1926, White Plains souvenir sheet. (630). Original gum never hinged, outstanding centering, wonderfully fresh and crisp, Extremely Fine, a gem sheet. **\$500**



- 286 ★★ 1927, 2¢ Vermont. (643). Original gum never hinged, choice centering within large perfectly balanced margins, lovely rich color, a Superb jumbo, rarely seen this choice. *SSV unpriced (SMQ \$450).* \$2  
Expertization: with 2014 P.S.A.G. certificate graded SUP 98J.



- 287 ★★ 1928, 5¢ Hawaii. (648). Original gum never hinged, perfectly centered within wide margins for this, post office fresh, Superb. *SMQ \$375.* \$21  
Expertization: with 2011 P.S.E. certificate graded SUP 98.



- 288 ★★ 1929, Kans.-Nebr., 1¢ to 10¢ complete. (658-679). Complete sets, original gum never hinged, bright and fresh, quite well centered, Very Fine, choice sets. \$962



- 289 ★★ 1931, 2¢ Pulaski. (690). Bottom plate no. 20420 single, original gum never hinged, perfectly centered within absolutely huge margins, beautiful color, a Superb gem, the highest graded, of course, and there is only one other at this grade. *SMQ \$350 for regular 100.* \$1  
Expertization: with 2017 P.S.E. certificate graded Gem 100J.





- 290 ★★ 1932, 6¢ Garfield, rotary press printing, horizontal coil. (723). Pair. Original gum never hinged, perfectly centered, luminous color, a Superb gem in every respect. The highest graded by the PF and the sole example, only three graded higher by the PSE. *SMQ* \$425. **\$32**

Expertization: with 2022 P.S.E. certificate graded SUP 98.



- 291 ★★ 1934, 5¢ Yellowstone National Park, perforated. (744). Bottom margin single, original gum never hinged, perfectly centered within massive margins, gorgeous color, a Superb and impressive jumbo, only four higher and no 100Js. *SMQ* \$150. **\$1**

Expertization: with 2017 P.S.E. certificate graded SUP 98J.



- 292 ★★ 1934, 10¢ Great Smoky Mountains, perforated. (749). Original gum never hinged, perfectly centered within wide margins, simply Superb. *SMQ* \$350. **\$5**

Expertization: with 2009 P.S.E. certificate graded Gem 100.

## AIRMAIL



- 293 ★★ **Airmail, 1918, First Issue, 6¢ to 24¢ complete. (C1-C3).** Complete, original gum never hinged, fresh, excellent centering, Extremely Fine, gems. **\$360**



- 294 ★★ **Airmail, 1918, 6¢ orange. (C1).** Original gum never hinged, beautifully centered, rich color and white paper, Extremely Fine, choice. *SSV \$180 (SMQ \$225).* **\$110**  
Expertization: with 2022 P.F. certificate graded XF 90.



- 295 ★★ **Airmail, 1918, 16¢ green. (C2).** Original gum never hinged, essentially perfectly centered, post office fresh, Extremely Fine. *SSV \$450 (SMQ \$425).* **\$120**  
Expertization: with 2022 P.F. certificate graded XF-SUP 95.



- 296 ★★ **Airmail, 1918, 24¢ carmine rose & blue. (C3).** Top plate no. 8493 single, original gum never hinged (lightly hinged in selvage), beautifully centered, lovely fresh color, Extremely Fine. **\$130**  
Expertization: with 2017 P.F. certificate.



- 297 ★★ **Airmail, 1923, Second Issue, 8¢ to 24¢ complete. (C4-C6).** Original gum never hinged, handpicked set for centering, color, and freshness, Extremely Fine, choice. **\$285**





- 298 ★★ Airmail, 1923, 8¢ dark green. (C4). Original gum never hinged, rich fresh color, Extremely Fine. *SSV* \$360 (*SMQ* \$400). **\$130**

Expertization: with 2022 P.F. certificate graded XF-SUP 95.



- 299 ★★/★ Airmail, 1930, Graf Zeppelin complete. (C13-C15). Original gum, C13 never hinged, C15 hinge remnant, fresh F.-V.F. **\$1,150**



- 300 ★★ Airmail, 1930, 65¢ Graf Zeppelin. (C13). Original gum never hinged, essentially perfectly centered, bright color, an Extremely Fine gem. *SSV* \$600 (*SMQ* \$700). **\$250**

Expertization: with 2022 P.F. certificate graded XF-SUP 95.



- 301 ★★ Airmail, 1930, 65¢ Graf Zeppelin. (C13). Left plate no. 20078 single, original gum never hinged, beautifully centered, post office fresh and choice, Extremely Fine. *SSV* \$425 (*SMQ* \$475). **\$250**

Expertization: with 2022 P.F. certificate graded XF 90.



- 302 ★★ Airmail, 1930, \$1.30 Graf Zeppelin. (C14). Original gum never hinged, fresh, well centered, Very Fine. **\$575**



- 303 ★ Airmail, 1930, \$2.60 Graf Zeppelin. (C15). Original gum, barely hinged if at all, choice centering and color, Extremely Fine. *SSV \$675 (SMQ \$650)*. **\$525**  
Expertization: with 2022 P.F. certificate graded XF 90.



- 304 ★★□ Airmail, 1933, 50¢ "Chicago" Zeppelin. (C18). Block of 4, original gum never hinged, no gum skips or gum bends, beautiful centering, Extremely Fine, choice block. **\$300 as singles**



- 305 ★★ Airmail, 1934, 6¢ Winged Globe. (C19). Original gum never hinged, flawless centering within rather wide margins for this, impeccably fresh, Superb, only six graded higher. *SMQ \$2,100*. **\$3**  
Expertization: with 2010 P.S.E. certificate graded SUP 98.

## SPECIAL DELIVERY



- 306 ○ **Special Delivery, 1885, 10¢ blue. (E1).** Choice centering, stunning color especially for a used example, light cancel, Extremely Fine, a choice used gem. *SSV \$190 (SMQ \$200).* **\$80**  
 Expertization: with 2022 P.F. certificate graded XF 90.



- 307 ★ **Special Delivery, 1893, 10¢ orange. (E3).** Original gum small hinge remnant, brilliant color and paper, well centered, Very Fine, pretty. **\$300**



- 308 ○ **Special Delivery, 1893, 10¢ orange. (E3).** Perfectly centered, bright fresh color and paper, light neat machine cancel, Extremely Fine, we are not sure why this is not at least a 98. *SSV \$250 (SMQ \$275).* **\$50**  
 Expertization: with 2022 P.F. certificate graded XF-SUP 95.



- 309 ★ **Special Delivery, 1911, 10¢ ultramarine. (E8).** Original gum lightly hinged, outstanding centering within wide margins, pretty shade, Extremely Fine. *SMQ \$200.* **\$120**  
 Expertization: with 2006 P.S.E. certificate, mislabeled "E6" graded XF-SUP 95.



- 310 ★★ **Special Delivery, 1922, 10¢ gray violet. (E12).** Original gum never hinged, mathematical centering, gorgeous rich color, a Superb gem. *SSV \$450 (SMQ \$600).* **\$95**  
 Expertization: with 2022 P.F. certificate graded XF-SUP 95.

## POSTAGE DUE



- 311 ★★ **Postage Due, 1879, 2¢ brown. (J2).** Original gum never hinged, well centered, lovely fresh rich color, Extremely Fine, scarce in choice never hinged condition. *SSV \$200 (SMQ \$225).* **\$90**  
 Expertization: **with 2022 P.F. certificate graded XF 90.**



- 312 ★★ **Postage Due, 1884, 3¢ red brown. (J17).** Original gum never hinged (gum bend), exceptionally fresh with deep color and a fine impression, tiny natural inclusion, Fine, scarce never hinged. **\$2,500**

## OFFICES IN CHINA



- 313 ★ **Offices in China, 1919, 40¢ on 20¢ deep ultramarine. (K13).** Original gum very lightly hinged, outstanding centering, brilliant color, Extremely Fine. *SSV \$175 (SMQ \$185).* **\$120**  
 Expertization: **with 2022 P.F. certificate graded XF 90.**



- 314 ★★ **Offices in China, 1922, 2¢ on 1¢ green. (K17).** Original gum never hinged, beautifully centered, bright and fresh color and paper, Extremely Fine. *SMQ \$450.* **\$225**  
 Expertization: **with 2022 P.S.E. certificate graded VF-XF 85J.**

## OFFICIALS



- 315 ★ Agriculture Dept., 1873, 10¢ yellow. (O5).** Disturbed original gum, beautifully centered, bright and rich color. Very Fine. **\$525**



- 316 ★ Agriculture Dept., 1873, 24¢ yellow. (O8).** Original gum, excellent centering, luminous color, fresh Extremely Fine, scarce ths choice, the highest grade awarded by the PF with one other example, the highest grade by the PSE is 85. *SSV \$900 (SMQ \$975).* **\$425**

Expertization: **with 1990, 2022 P.F. certificates, the latter graded XF 90.**



- 317 ★ Interior Dept., 1873, 2¢ vermilion. (O16).** Original gum barest trace of hinge mark, outstanding centering within positively huge margins, stunning brilliant color, Extremely Fine, a beautiful gem. *SSV \$165 as regular 90 (SMQ \$180 as regular 90).* **\$70**

Expertization: **with 2022 P.F. certificate graded XF 90J.**



# PARCEL POST



- 318 ○ **Parcel Post, 1913, 1¢ Post Office Clerk. (Q1).** Incredible centering within huge balanced margins, bright color, light cancel, an Extremely Fine used jumbo, only five graded higher with no 100s. *SMQ* \$200. **\$1**  
 Expertization: with 2015 P.S.E. certificate graded XF-SUP 95J.



- 319 ★★ **Parcel Post, 1913, 15¢ Automobile Service and 25¢ Manufacturing. (Q7, Q9).** Original gum never hinged, both wide margin plate no. singles, exceptionally fresh and choice, Very Fine to Extremely Fine. **\$315+**



- 320 ○ **Parcel Post Postage Due, 1913, 5¢ dark green. (JQ3).** Choice centering within very large margins, wonderfully deep color, Extremely Fine. SSV \$375 (*SMQ* \$400). **\$4**  
 Expertization: with 2014 P.S.A.G. certificate graded SUP 98.



- 321 ★★ **Parcel Post Postage Due, 1913, 10¢ dark green. (JQ4).** Original gum never hinged, exceptionally well centered for the 10¢, lovely color with a sharp impression, Extremely Fine. *SMQ* \$850. **\$290**  
 Expertization: with 2003 P.S.E. certificate graded XF 90.





- 322 ★★ Parcel Post Postage Due, 1913, 10¢ dark green. (JQ4).** Original gum never hinged, incredibly well centered for the difficult 10¢ within wide margins, post office fresh, natural pre-printing creases, basically unnoticeable from the front, Extremely Fine, great looking stamp. **\$290**  
 Expertization: **with 2022 P.F. certificate.**



- 323 ★ Parcel Post Postage Due, 1913, 25¢ dark green. (JQ5).** Right plate no. 6248 single, original gum, beautifully centered, rich color and a sharp impression, Extremely Fine, only five graded higher, highest is 98. *SMQ unpriced as a 90J, \$150 as a regular 90.* **\$9**  
 Expertization: **with 2022 P.S.E. certificate graded XF 90J.**



- 324 ★★ Special Handling, 1925, 25¢ deep green. (QE4).** Original gum never hinged, wide balanced margins, Extremely Fine, choice. *SMQ \$190.* **\$37**  
 Expertization: **with 2006 P.S.E. certificate graded XF-SUP 95.**

## POSTAL STATIONERY



- 325 ★ Envelope, 1853, Nesbitt 1st Issue, 3¢ red on buff, “THREE” in short label with straight ends. (U4).** Cut square. Full corner, 38 x 38mm, Extremely Fine. **\$425**  
Provenance: **Barkhausen.**



- 326 ○ Envelope, 1854, Nesbitt 1st Issue, 3¢ red, “THREE” in short label with octagonal ends. (U5).** Cut square, 37 x 37mm, light town c.d.s., fresh Extremely Fine. **\$500**



- 327 ★ Envelope, 1854, Nesbitt 1st Issue, 3¢ red on buff, “THREE” in short label with octagonal ends. (U6).** Cut square, 29 x 36mm, fresh Very Fine, quite rare unused, unlisted as a mint entire in the UPSS. **\$3,750**



- 328 ★ Envelope, 1870, Nesbitt reprints. (U9//U39R).** 20 cut squares, one or two of each, generally Very Fine, fresh lot. **Estimate 200 - 300**



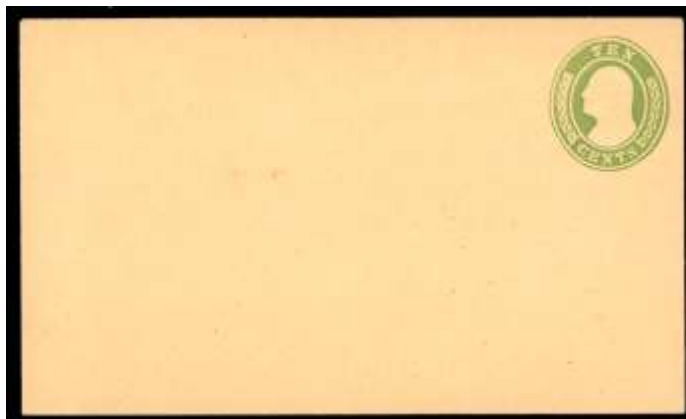
- 329 ★ Envelope, 1855, Nesbitt 1st Issue, 10¢ green, "TEN" in short label. (U15).** Full corner, 44 x 41mm, exceptionally fresh and choice, Extremely Fine. **\$400**



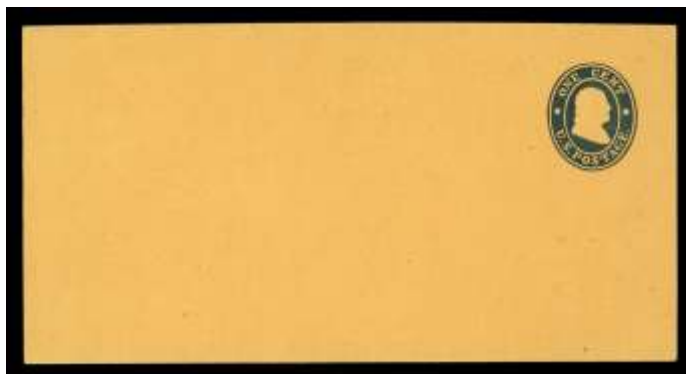
- 330 ★✉ Envelope, 1855, Nesbitt 1st Issue, 10¢ green on buff, "TEN" in short label. (U16).** Entire, size 7, knife 20, watermark 1, trivial spot at lower left corner, otherwise fresh and Very Fine, UPSS 25 \$450. **\$425**



- 331 ★ Envelope, 1855, Nesbitt 1st Issue, 10¢ green, “TEN” in wide label. (U17).** Full corner, 39 x 40mm, hinge remnant and a little flap separation, cut square is Extremely Fine. **\$375**



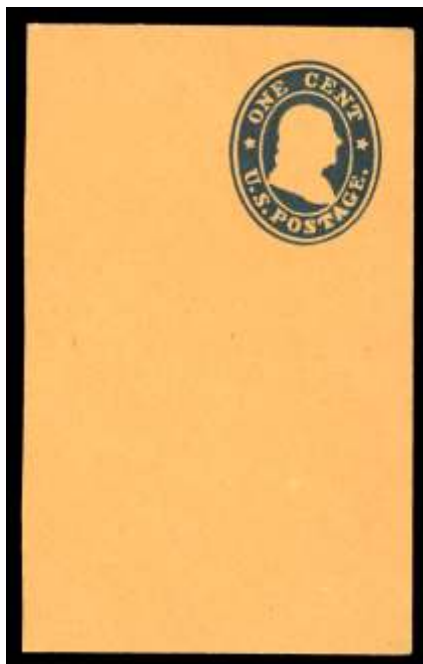
- 332 ★✉ Envelope, 1855, Nesbitt 1st Issue, 10¢ pale green on buff, “TEN” in wide label. (U18a).** Entire, size 7, knife 20, watermark 1, negligible spot left center, still fresh and Very Fine, UPSS 28a \$700. **\$600**  
Provenance: **White.**



- 333 ★✉ Wrapper, 1862, Nesbitt 2nd Issue, 1¢ blue on orange, period after “POSTAGE”. (W22).** A pristine, unsealed mint wrapper, type 3 die. Extremely Fine. UPSS 40a \$6,000. **\$5,500**

A CHOICE EXAMPLE OF THE 1¢ BLUE STAR DIE WRAPPER ON ORANGE PAPER. ONE OF THE GREAT RARITIES OF THE STAR DIES.

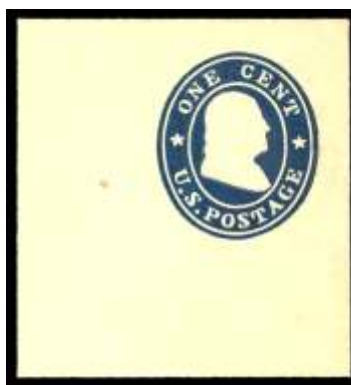
*Porter Venn notes that probably no more than five examples of each type exist.*



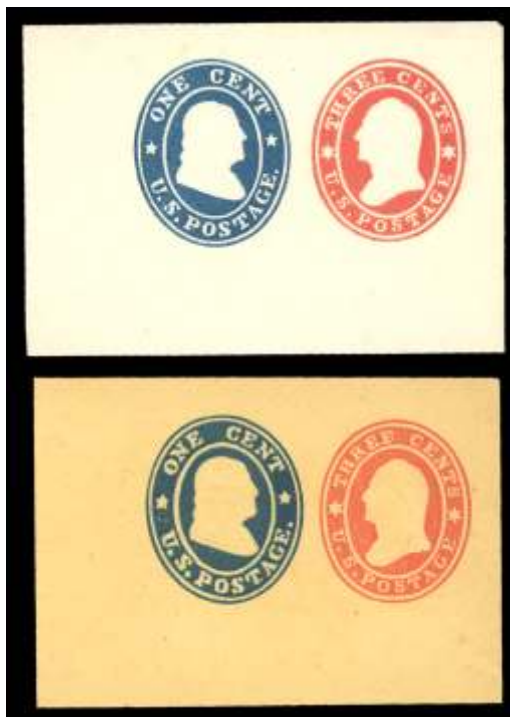
- 334 ★ Envelope, 1860, Nesbitt 2nd Issue, 1¢ blue on orange, bust touches inner frame line. (U23). Cut square. Full right side of envelope 54 x 83mm, fresh and choice Extremely Fine. **\$500**



- 335 ★ Envelope, 1860, Nesbitt 2nd Issue, 1¢ blue on amber, no period after "POSTAGE". (U24). Cut square. Full corner, 43mm x 43mm, fresh Very Fine. **\$350**



- 336 ★ Envelope, 1860, Nesbitt 2nd Issue, 1¢ blue on amber, no period after "POSTAGE". (U24). Cut square. Full corner, 44 x 43mm, beautiful color, natural inclusion, Extremely Fine. **\$350**  
Provenance: **Barkhausen.**



- 337 ★ Envelope, 1860, Nesbitt 2nd Issue, 3¢+1¢ red & blue on white and buff. (U28-29). Both full corners, fresh Extremely Fine. **\$500**



- 338 ★✉ Envelope, 1860, Nesbitt 2nd Issue, 3¢+1¢ red & blue. (U28). Entire, size 7, knife 20, watermark 1, fresh and Very Fine, UPSS 57 \$850. **\$500**



- 339 ★✉ Envelope, 1860, Nesbitt 2nd Issue, 3¢+1¢ red & blue on buff. (U29). Entire, size 7, knife 20, watermark 1, fresh and choice Very Fine, UPSS 60 \$850. **\$500**





- 340 ★ Envelope, 1860, Nesbitt 2nd Issue, 6¢ red. (U30).** Cut square. Full corner, 37 x 40mm, natural inclusion, Very Fine. **\$1,800**



- 341 ★ Envelope, 1860, Nesbitt 2nd Issue, 10¢ green. (U32).** Cut square, 29 x 32mm, Very Fine. **\$1,250**



- 342 ★ Envelope, 1860, Nesbitt 2nd Issue, 10¢ green. (U32).** Cut square. Full corner 31 x 33mm, natural inclusion, Very Fine. **\$1,250**

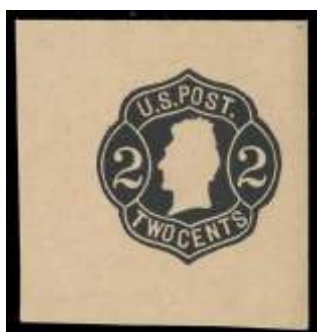


- 343 ★ Envelope, 1860, Nesbitt 2nd Issue, 10¢ green on buff. (U33).** Cut square. Full corner, 32 x 32mm, fresh Extremely Fine. **\$1,250**



344 ★ Envelope, 1861, 12¢-40¢. (U42-45). Large full corners, fresh Extremely Fine.

\$980



345 ★ Wrapper, 1864, Nesbitt 4th Issue, 2¢ black on buff, “U.S. POST” above, narrow design. (W51). Cut square. With full wrapper flap on back, 38 x 40mm, Extremely Fine.

\$425



- 346 ★✉ **Wrapper, 1864, Nesbitt 4th Issue, 2¢ black on buff, “U.S. POST” above, narrow design. (W51).** Entire, wrapper, knife W1F, watermark 1, vertically laid paper, fresh Very Fine, UPSS 111a \$800. **\$650**



- 347 ★ **Envelope, 1865, Nesbitt 4th Issue, 9¢ lemon on buff. (U66).** Cut square. Full corner, 45 x 42mm, brilliant color, Extremely Fine. **\$375**



- 348 ★ **Envelope, 1865, Nesbitt 4th Issue, 9¢ lemon on buff. (U66).** Cut square. Full corner 45mm x 46mm, bright color, Very Fine. **\$375**



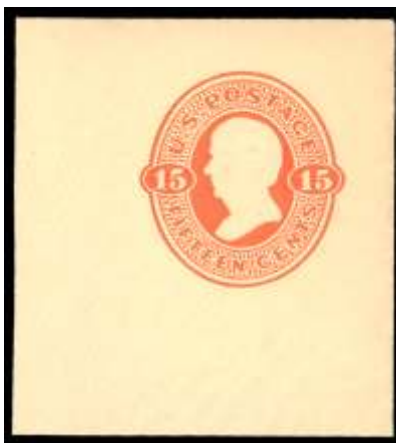
- 349 ★ Envelope, 1865, Nesbitt 4th Issue, 12¢ brown on buff. (U68).** Cut square. Full upper right corner of envelope with three line Wells Fargo frank, 117 x 60mm, tiny inclusion, fresh Extremely Fine. **\$275**



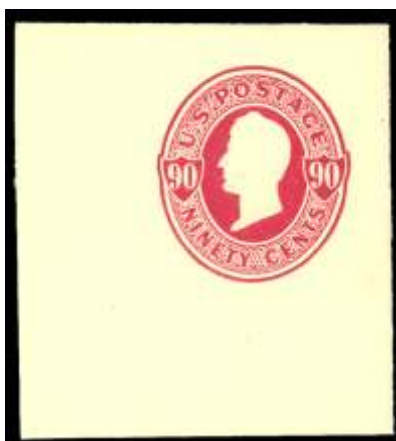
- 350 ★ Envelope, 1870, Reay Issue, 10¢ olive black. (U89).** Cut square. Full corner, 38 x 41mm, fresh rich color, Extremely Fine. **\$650**



- 351 ★ Envelope, 1870, Reay Issue, 10¢ olive black on amber. (U90).** Cut square. Full corner, 40 x 40mm, stain on flap, cut square is Extremely Fine and choice. **\$625**



- 352 ★ Envelope, 1870, Reay Issue, 15¢ orange on cream. (U98a).** Cut square. Full corner, 50mm x 55mm, fresh  
Extremely Fine. **\$325**



- 353 ★ Envelope, 1870, Reay Issue, 90¢ carmine on amber. (U106).** Cut square. Full corner, 46mm x 52mm,  
Extremely Fine. **\$350**



- 354 ★ Envelope, 1874, Plimpton Issue, 1¢ dark blue on cream, extremity of bust forms an angle. (U110).** Cut  
square. Full corner 34 x 37mm, deep shade, Very Fine, known as cut square only. **\$1,000**



- 355 ★✉ Envelope, Unlisted surcharges. (U115,116,118,348 Var.).** Entires, U115 has a tiny unnoticeable tear, otherwise fresh and Very Fine. **Estimate 500 - 750**

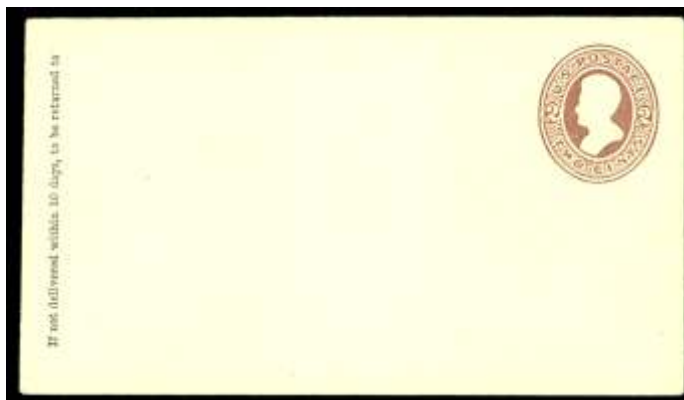
Provenance: **U115, 116, 118 Saddleback.**

*The Columbian entire has a pencil notation on reverse "San Francisco P.O."*



- 356 ★ Envelope, 1874, Plimpton Issue, 2¢ brown on amber, numerals in long ovals, left "2" touches oval. (U133).** Cut square. Full corner, 39 x 40mm, fresh Extremely Fine. **\$325**





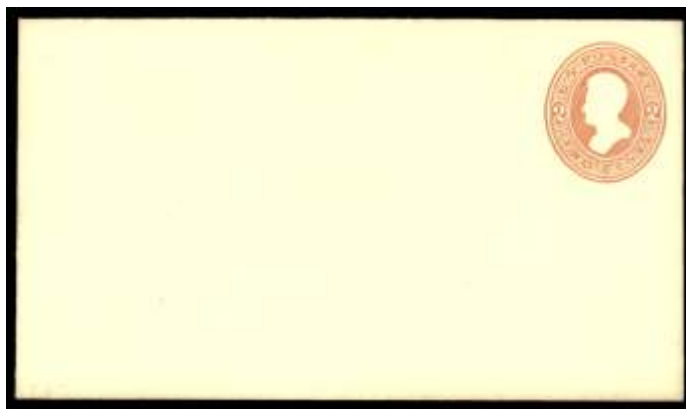
- 357 ★✉ Envelope, 1874, Plimpton Issue, 2¢ brown on amber, numerals in long ovals, left “2” touches oval. (U133). Entire, size 6, knife 18, watermark 2, fresh Very Fine, scarce, UPSS 308 \$600. **\$550**  
Provenance: **Barkhausen.**



- 358 ★ Envelope, 1874, Plimpton Issue, 2¢ brown on amber, numerals in long ovals, “O” of “TWO” with center netted. (U135). Cut square. Full corner, 34 x 37mm, Extremely Fine. **\$425**



- 359 ★ Envelope, 1874, Plimpton Issue, 2¢ brown on amber, numerals in long ovals, “O” of “TWO” with center netted. (U135). Cut square. 33 x 40mm, fresh Very Fine. **\$425**



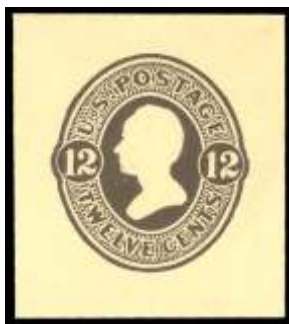
- 360** ★✉ Envelope, 1874, Plimpton Issue, 2¢ brown on amber, numerals in long ovals, “O” of “TWO” with center netted. (U135). Entire, size 6, knife 18, watermark 2, barest hint of toning around edges, Very Fine, scarce, UPSS 310 \$750. **\$650**



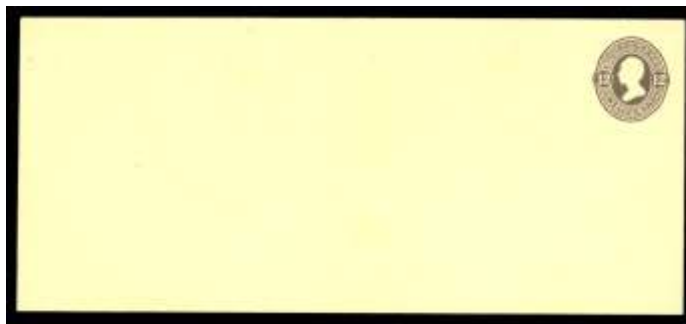
- 361** ★ Envelope, 1874, Plimpton Issue, 3¢ green on amber, thick lettering, egg-shaped head. (U169). Cut square. 34 x 36mm, Very Fine. **\$450**



- 362** ★✉ Envelope, 1874, Plimpton Issue, 3¢ green on amber, thick lettering, egg-shaped head. (U169). Entire, size 10, knife 54, watermark 5, fresh Very Fine, rare unused entire, UPSS 450 \$750. **\$700**



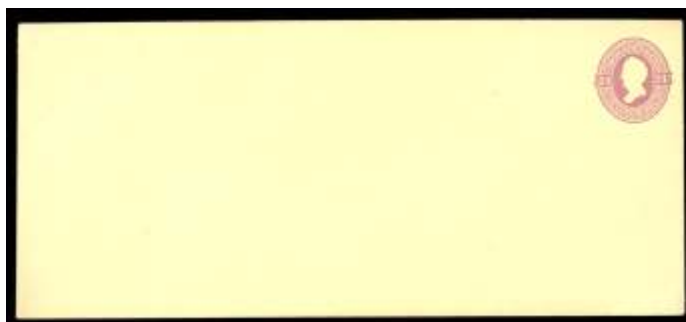
- 363 ★ Envelope, 1874, Plimpton Issue, 12¢ plum on cream. (U197).** Cut square, 34 x 39mm, fresh and choice Extremely Fine. **\$450**



- 364 ★✉ Envelope, 1874, Plimpton Issue, 12¢ plum on cream. (U197).** Entire, size 21, knife 98, watermark 2, light hinge marks on face. fresh, Very Fine, only comes as a large entire, UPSS 59 \$700. **\$850**



- 365 ★ Envelope, 1874, Plimpton Issue, 15¢ orange on cream. (U200).** Cut square. Full corner, 38 x 42mm, Extremely Fine. **\$550**



- 366 ★✉ Envelope, 1874, Plimpton Issue, 24¢ purple on cream. (U203).** Entire, size 21, knife 98, watermark 2 (?), fresh Very Fine, only comes as a large entire, UPSS 608 \$900. **\$750**



- 367 ★ Envelope, 1875, Plimpton Issue, 90¢ carmine on cream. (U213). Cut square, 33mm x 33mm, Very Fine. \$1,000**



- 368 ★ Envelope, 1882, Plimpton & Morgan Issue, 5¢ brown on fawn. (U226). Cut square. Full corner, 38 x 40mm, Extremely Fine. \$300**



- 369 ★ Envelope, 1884, Plimpton & Morgan Issue, 2¢ red on amber, 3½ links over left “2”. (U241). Cut square. Full corner 38 x 44mm, Extremely Fine. \$500**



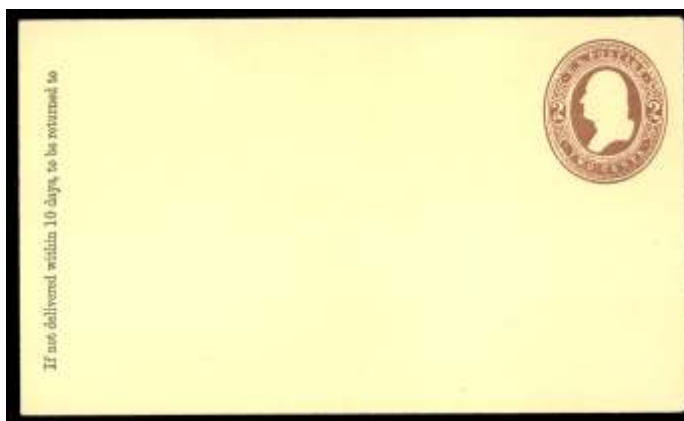
- 370 ★✉ Envelope, 1884, Plimpton & Morgan Issue, 2¢ red on fawn, 2 links below right “2”. (U246). Entire, size 7, knife 31, watermark 6, vertical printed return notice at left, fresh Very Fine, UPSS 748 \$700. \$525**



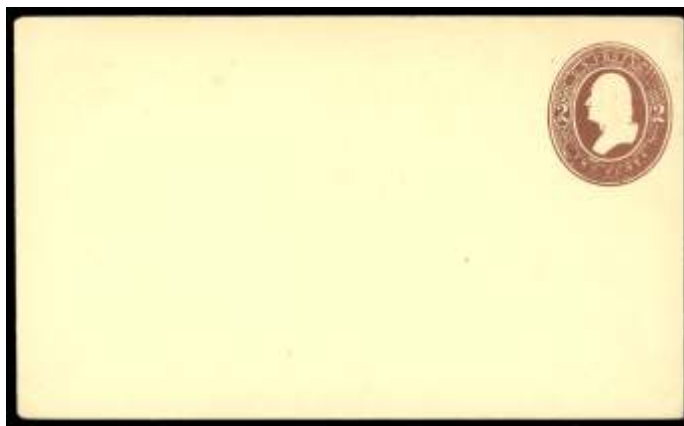
- 371 ★✉ Envelope, 1884, Plimpton & Morgan Issue, 2¢ red on fawn, 2 links below right “2”. (U246). Entire, size 7, knife 31, watermark 6, vertical printed return notice at left, fresh Very Fine, UPSS 748 \$700. **\$525**



- 372 ★ Envelope, 1884, Plimpton & Morgan Issue, 2¢ brown on amber, 2 links below right “2”. (U271). Cut square. Full corner 37 x 39mm, Very Fine. **\$425**



- 373 ★✉ Envelope, 1884, Plimpton & Morgan Issue, 2¢ brown on amber, 2 links below right “2”. (U271). Entire, size 7, knife 31, watermark 6, printed return notice at left, fresh Very Fine, UPSS 750 \$550. **\$575**  
Provenance: **Bakerhausen.**



- 374 ★✉ Envelope, 1884, Plimpton & Morgan Issue, 2¢ brown on amber, round “O” in “TWO”. (U274). Entire, size 7, knife 31, watermark 6, characteristic over inked impression, fresh Very Fine, UPSS 756 \$425.  
\$375



- 375 ★ Envelope, 1884, Plimpton & Morgan Issue, 2¢ red, extremity of bust forms a point. (U285). Cut square. Full corner 46 x 50mm, bright color, Extremely Fine. \$600



- 376 ★✉ Envelope, 1884, Plimpton & Morgan Issue, 2¢ red on blue, extremity of bust forms a point. (U286). Entire, size 6, knife 19, watermark 6, tiny spot top left and minor stain on reverse, otherwise Very Fine, UPSS 788 \$500.  
\$350





- 377 ★ Envelope, 1884, Plimpton & Morgan Issue, 2¢ brown on blue, extremity of bust is rounded. (U290).**  
Cut square. Full corner 37 x 40mm, tiny natural inclusion, Very Fine. **\$850**




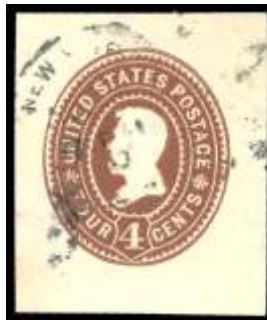
- 378 ★✉ Envelope, 1884, Plimpton & Morgan Issue, 2¢ brown on blue, extremity of bust is rounded. (U290).**  
Entire, size 6, knife 19, watermark 6, fresh Very Fine, UPSS 857 \$2,400. **\$1,600**  
Expertization: signed Champagne (RAC),.



- 379 ★ Envelope, 1887, Plimpton & Morgan Issue, 2¢ green on amber manila, die 3. (U323).** Cut square. Full corner, 40 x 40mm, Very Fine. **\$400**



- 380**  **Envelope, 1893, 5¢ and 10¢ Columbian entires. (U350-U351).** Matching entires to Germany with July 29, 1893 Expo. Station duplex hand-stamped cancels German receiver handstamps on reverse, 5¢ slight wrinkles at top, fresh Very Fine. **\$700**



- 381**  **Envelope, 1899, Plimpton & Morgan Issue, 4¢ brown, bust broad and draped. (U373).** Cut square, 33 x 39mm, fresh Extremely Fine. **\$1,000**



- 382 ★ Envelope, 1920, 2¢ on 1¢ green, die 1. (U452).** Cut square. Full corner, 57mm x 57mm, tear at top (could be trimmed to make a sound cut square), otherwise Very Fine. **\$1,750**

Provenance: **Barkhausen.**



- 383 ★ Envelope, 1920, 2¢ on 2¢ carmine, die 3. (U453).** Full corner 51 x 54mm, rich color, bright paper, Extremely Fine. **\$3,500**

A CHOICE FULL CORNER EXAMPLE OF THIS EXCEEDINGLY RARE SURCHARGE ISSUE.

Expertization: **with 2022 P.F. certificate.**



- 384 ★ Envelope, 1920, 2¢ on 2¢ carmine on blue, die 8. (U457).** Cut square, 37mm x 37mm, fresh Extremely Fine. **\$325**



- 385 ★ Envelope, 1920, 2¢ on 1¢ green, die 1. (U465). Full corner 43 x 40 mm. Very Fine. UPSS 2924. **\$900+**



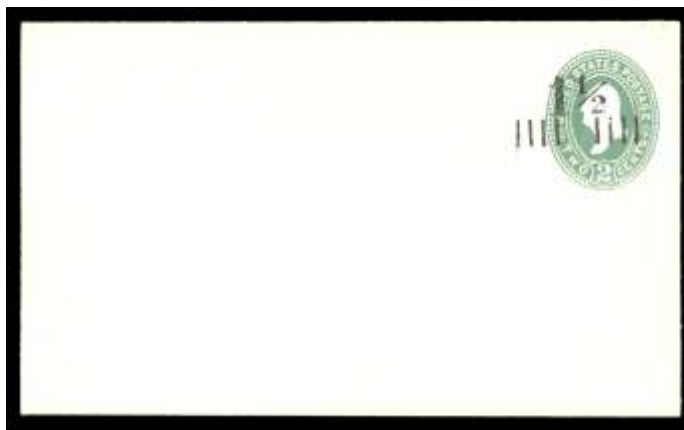
- 386 ★ Envelope, 1920, violet 2¢ on 3¢ dark violet, type 7 surcharge on partial type 3. (U480 var.). Full corner 41 x 41mm, Very Fine, known only as a cut square. UPSS 3038a. **Estimate 2,000 - 3,000**

AN EXTRAORDINARILY RARE ERROR CREATED AT ORLANDO BEACH, FLORIDA.

Expertization: **with 2022 P.F. certificate.**



- 387 ★ Envelope, 1925, 1½¢ on 2¢ green. (U486). Cut square. Full corner, 44 x 46mm, fresh Extremely Fine. **\$500**



- 388** ★✉ **Envelope, 1925, 1½¢ on 2¢ green. (U486).** A choice mint size 7 entire with an unsealed flap. Extremely Fine. UPSS 3078 \$1,200. **\$1,150**



- 389** ★ **Envelope, 1925, 1½¢ on 2¢ green. (U488).** Cut square. Full corner, 41 x 42mm, rich color, Extremely Fine. **\$500**



- 390** ★ **Envelope, 1925, 1½¢ on 1¢ green on oriental buff, die 2. (U492).** Cut square. Full corner, 48 x 44mm, fresh Extremely Fine. **\$500**



- 391 ★ Envelope, 1925, 1½¢ on 1¢ green on oriental buff, die 2. (U492). Cut square. Full corner 47mm x 46mm, small fault at right (could be trimmed), otherwise Very Fine. **\$500**



- 392 ★ War Dept., 1873, 1¢ dark red. (UO18). Cut square. 35 x 38, bright, Very Fine. **\$350**



- 393 ★ War Dept., 1873, 3¢ dark red on cream. (UO22). Cut square. Full corner, 38 x 40mm, fresh Extremely Fine. **\$500**



- 394 ★ War Dept., 1873, 3¢, 6¢, 30¢ cut squares. (UO22-23, 29). Cut a bit close, 30¢ small crease, Fine. **\$1,000**





- 395** ★✉ **War Dept., 1873, 6¢ dark red. (UO23).** Entire, size 35, knife 122, watermark 2a, light wrinkles and a couple tiny specks, all well clear of indicia, otherwise Very Fine, UPSS WD14 \$450. **\$475**  
Provenance: **Barkhausen.**



- 396** ★ **War Dept., 1873, 2¢ vermilion. (UO32).** Cut square. Full corner 40 x 41mm, bright, Extremely Fine. **\$400**



- 397** ★ **War Dept., 1873, 6¢ vermilion on cream. (UO38).** Cut square. Full corner, 56 x 53mm, Extremely Fine. **\$400**



- 398** S★✉ **War Dept., 1873, 15¢ vermilion. (UO41).** Specimen entire, size 21, knife 98, watermark 2, choice Very Fine, given there are less than 10 known entires, this will fill the spot, regular entire cat value \$4,000. **Estimate 300 - 400**

Provenance: **Barkhausen.**



- 399 ★ War Dept., 1873, 24¢ vermillion. (UO42). Cut square. Full corner, 42 x 42mm, bright, Extremely Fine. **\$300**



- 400 ★ War Dept., 1875, 1¢ red on amber. (UO45). Cut square. 35 x 38mm, hinge remnant, fresh Very Fine. **\$600**



- 401 ★ War Dept., 1875, 12¢ red on amber. (UO62). Cut square. Full corner, 42 x 41mm, fresh Extremely Fine. **\$400**



- 402 ★ War Dept., 1875, 12¢ red on cream. (UO63). Cut square. Full corner, 41 x 41mm, fresh and choice Extremely Fine. **\$450**



- 403 ★ War Dept., 1875, 15¢ red on amber. (UO65).** Cut square. Full corner, 43 x 45mm, choice Extremely Fine. **\$650**

Provenance: **Barkhausen.**



- 404 ★ War Dept., 1875, 15¢ red on amber. (UO65).** Cut square. Full corner, 37 x 41, fresh Extremely Fine. **\$650**



- 405 ★ War Dept., 1875, 15¢ red on cream. (UO66).** Cut square. Full corner 43 x 43mm, absolutely trivial bend, still fresh and Very Fine. **\$525**



- 406 ★ War Dept., 1875, 30¢ red on amber. (UO68).** Cut square. Full corner, 42 x 41mm, light crease to the right of the indicia, otherwise Very Fine. **\$550**  
 Expertization: **with 1999 P.S.E. certificate.**



- 407 ★ War Dept., 1875, 30¢ red on cream. (UO69).** Cut square. Full corner, 41 x 42mm, fresh Extremely Fine. **\$675**



- 408 ★✉ Postal Card, 1873, 1¢ brown on buff. (UX1).** Fresh, sharp corners, Very Fine. **\$375**



- 409 ★✉ **Postal Card, 1885, 1¢ dark chocolate on buff. (UX8c).** Fresh, sharp corners, trifling bend completely unnoticeable from front, otherwise Very Fine, scarce shade. **\$450**



- 410 ★/✉☐ **Postal Card, 1916, 1¢ green on gray, die 1. (UX27C).** Block of nine cards. Crisp, some toning, mostly light, affecting seven of the cards, slight crease lower right corner, otherwise Very Fine. **\$29,250 as single cards**

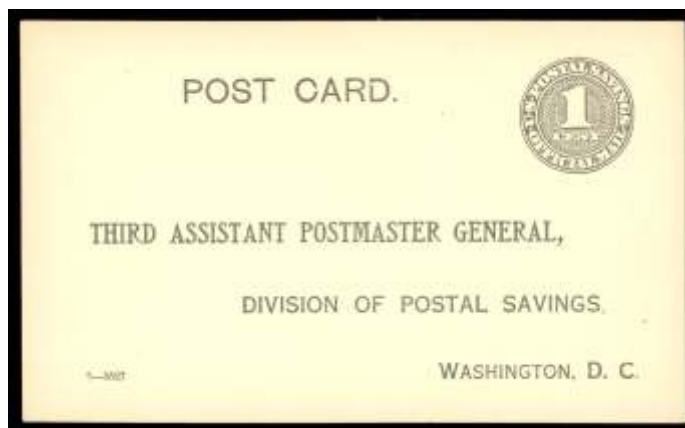
THIS AMAZING POSTAL CARD MULTIPLE IS BELIEVED TO BE THE LARGEST KNOWN AND MAY INDEED BE THE ONLY MULTIPLE. IT WAS MOST LIKELY CUT FROM A COMPLETE SHEET OF 40 IN THE LATE 1960S AND HAS BEEN IN A PRIVATE COLLECTION UNTIL NOW.

Expertization: **with 2022 P.F. certificate.**



- 411 ★✉ **Postal Card, 1916, 1¢ dark green on gray, die 2. (UX27D).** An immaculate unused card with the *back only* mimeographed by the *Chicago, Milwaukee, & St. Paul Railway Co.*, Extremely Fine. UPSSS39 \$450+. **\$550+**

Expertization: **with 2004 P.F. certificate.**



- 412 ★✉ **Official Postal Card, 1913, 1¢ black. (UZ1).** Sharp corners, fresh and crisp Very Fine. **\$700**

### REVENUE



- 413 ○ **Revenue, 1864, First Issue, \$200 U.S. Internal Revenue, perf'd. (R102).** Gorgeous colors, light blue handstamped cancel, reperfed, light wrinkles, not visible from front, Fine appearance, handsome. **\$2,500**

### CONFEDERACY



- 414 ★ **1862, 5¢ blue. (4).** Original gum small hinge remnant, brilliant color, balanced margins, fresh Very Fine to Extremely Fine, pretty! *SMQ* \$300. **\$225**  
 Expertization: **with 2022 P.S.E. certificate graded VF-XF 85.**



## U.S. POSSESSIONS

## CANAL ZONE



- 415 ★ 1904, 2c rose. (1). Original gum, well centered, fresh and Very Fine. \$650

Expertization: with 2001 A.P.S. certificate.



- 416 ★ 1904, 1¢-10¢ overprinted U.S. complete. (4-8). Complete, original gum, 1¢-5¢ slightly tropicalized, exceptionally fresh set, F.-V.F. \$395



- 417 ★ 1911, 10c on 13c gray, "10 cts" omitted. (36b). Original gum, well centered and exceptionally fresh, Very Fine, scarce error. \$300

Expertization: with 2000 A.P.S. certificate.



- 418 ○ Airmail Officials, 1941, 5¢-40¢ complete, type II. (CO8-CO12). Complete set, usual Balboa Heights roller cancels, fresh F.-V.F. \$800



419



420



421

- 419 ★ Postage Due, 1914, 10¢ rose carmine. (J3).** Original gum, rich color, Fine, quite elusive in sound mint condition. **\$900**

Expertization: **with 2000 A.P.S. certificate.**

- 420 ★★ Postage Due, 1925, 10¢ orange. (J17).** Original gum never hinged, perfect centering, fresh and choice, simply Superb, unpriced never hinged. **\$55 as hinged**

Expertization: **with 2008 P.F. certificate.**

- 421 ○ Official, 1941, 50¢ rose lilac, type Ia. (O8).** Original gum, usual Balboa Heights roller cancel, F.-V.F., only 1,000 issued. **\$550**

Expertization: **with 2000 A.P.S. certificate.**



- 422 ★ Envelope, 1932, 3¢ on 2¢ carmine. (U12).** Entire, exceptionally fresh, Extremely Fine, UPSS31. **\$225**



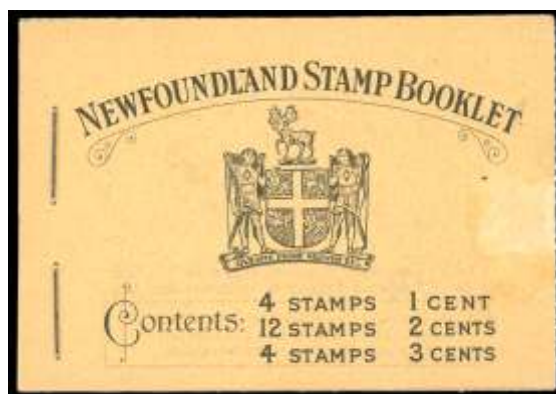
- 423 ★ Envelope, 1934, 3¢ on 2¢ carmine. (U15).** Entire, size 19, fresh Very Fine, UPSS39. **\$250**

## CANADA AND PROVINCES

## CANADIAN PROVINCES



- 424 P ☐ New Brunswick, 1860, 5¢ brown, unissued, plate proof on India. (Unitrade 5P). Block of four. Fresh and choice Very Fine. Scott 5p. **Unitrade C\$1,200**



- 425 ★★ Newfoundland, 1932-1937, complete booklets. (187a, b (2), c). Four booklets comprised U BK2 (a little light adherence on the corners), BK3, BK3a (small holes listed in Gibbons-SG SB2b), BK4a, fresh lot, original gum never hinged, F.-V.F. Unitrade C\$3,750. **\$2,525**



- 426 P Newfoundland, 1937, King George VI Long Coronation, 1¢-48¢, proofs. (233P-243P). Complete set on wove paper in black, without gum as issued, fresh and Very Fine. **Estimate 200 - 300**  
Expertization: with 1979 Bloch certificate.



- 427 ★★ Newfoundland Airmail. (C6-8, C13-17). Original gum never hinged, F.-V.F.

\$460



- 428 ★ Newfoundland, Airmail, 1932, \$1.50 on \$1 Dornier DO-X Flight. (C12). Choice centering, fresh Extremely Fine.

\$275



- 429 ★★ Newfoundland, Airmail, 1933, \$4.50 on 75¢ Balbo Flight. (C18). Original gum never hinged, beautifully centered, fresh and choice, Extremely Fine. Unitrade C18; C\$900.  
Expertization: with 1990 P.F. certificate.

\$475



430



431

- 430 ★ Nova Scotia, 1851, 3d bright blue. (2). Original gum hinge remnant, full to large margins, lovely fresh color, Very Fine. Unitrade 2i; C\$3,600.

\$1,750

Expertization: with 2022 Greene Foundation certificate.


- 431 ○ Nova Scotia, 1851, 6d yellow green. (4). Full to large margins, neat oval grid cancel, fresh Very Fine. Unitrade 4; C\$1,200.

\$825

Expertization: with 2022 Greene Foundation certificate.

## CANADA



- 432**  **1855, Prince Albert, 6d greenish gray. (5b).** Ample to mostly large margins, tied light 7-ring cancel to 1857 cross border cover to Holderness New Hampshire "Sherbrook Ja 7, 1857" c.d.s., small tear at top center of cover. F.-V.F. Unitrade 5b; C\$2,000. **\$1,900**

Expertization: **with 1977 B.P.A. certificate.**



- 433** (★) **1859, Beaver, 5¢ vermilion. (15).** Unused without gum, incredibly well centered for this narrowly spaced issue, bright and fresh color and paper, Extremely Fine, choice. Unitrade 15; C\$800. **\$425**

Expertization: **with 2021 Greene Foundation certificate.**

Provenance: **Lyman.**



- 434** (★) **1859, Queen Victoria, 12½¢ yellow green. (18).** Unused regummed, quite well centered for this difficult issue, bright color, Very Fine. Unitrade 18; C\$1,250. **\$750**

Expertization: **with 2021 Greene Foundation certificate.**

Provenance: **Lyman.**



- 435** ○ **1859, Jacques Cartier, 17¢ blue, major re-entry. (Unitrade 19ii).** Excellent centering for this, rich color, light cancel, leaves the re-entry completely visible, Very Fine. Scott 19 var. **Unitrade C\$4,500**

CERTAINLY AMONG THE FINEST KNOWN EXAMPLES OF THIS SCARCE RE-ENTRY.





- 436 ○ **1864, Queen Victoria, 2¢ rose. (20).** Fresh and attractively centered, with 1867 town postmark, F.-V.F. Unitrade 20; C\$200. **\$300**

Expertization: **with 2019 Greene Foundation certificate.**



- 437 ○ **1868-76, Large Queens, 1¢-15¢. (21-30, 30b).** Complete used set with an extra shade of the 15¢, selected for centering color and freshness, possibly a trifling flaw or two if at all, but generally Very Fine to Extremely Fine. **\$1,325**



- 438 ★★ **1868, Large Queen, ½¢ black, with Chignon variety. (Unitrade 21iii).** Typical streaky original gum never hinged, beautifully centered, exceptionally fresh, Very Fine. This example also displays the “spur” variety, one of only two positions on the plate displaying both varieties. Scott 21 var. **Unitrade C\$600**

Expertization: **with 2019 Greene Foundation certificate for block of eight.**

Provenance: **Gill.**



- 439 ★□ **1868, Large Queen, ½¢ black, thin paper with “spur”. (Unitrade 21c, iv).** Block of four. Original gum, upper left stamp, “spur”, lower left stamp “H” spur, outstanding centering, fresh intense color, Very Fine to Extremely Fine. Scarce and choice multiple. Scott 21c var. **Unitrade C\$2,120 as singles**

Expertization: **with 2019 Greene Foundation certificate.**





- 440 ★★ 1875, Large Queen, 5¢ olive green, perf 11½. (Unitrade 26).** Typical dull original gum, never hinged, attractive centering, prooflike color and impression, fresh and choice, Very Fine for this. Scott 26. **Unitrade C\$7,500**

A LOVELY FRESH EXAMPLE OF THE 5¢ LARGE QUEEN WHICH IS RARELY ENCOUNTERED IN THIS CHOICE NEVER HINGED CONDITION.



- 441 ★ 1868, Large Queen, 6¢ dark brown. (27).** Unused, no gum, unusually well centered for the 6¢, brilliant color on fresh paper, interesting tiny plate smear at top, Very Fine. The 6¢ Large Queen is rarely seen in this choice unused condition. Unitrade 27; C\$2,500. **\$1,800**

Expertization: with 2022 Greene Foundation certificate.



- 442 (★) 1868, Large Queen, 12½¢ blue. (28).** Unused without gum, beautifully centered within exceptionally large margins, gorgeous color, Extremely Fine. A beautiful stamp. Unitrade 28; C\$1,400. **\$950**

Expertization: with 1989, 2019 Greene Foundation certificates.



- 443 ○ 1870, Small Queen, 1¢ yellow, “Long Strand of hair” variety. (Unitrade 35viii).** Perfectly centered within extra large balanced margins, neat light postmark allows variety to be clearly visible, bright color, Extremely Fine, a choice example of this scarce variety. Scott 35 var. **Unitrade C\$600**

Expertization: with 2022 Greene Foundation certificate.



- 444 ★★ 1893, Queen Victoria “Widow’s Weeds”, 50¢ deep blue. (47). Original gum never hinged, natural gum bends(not mentioned in cert), outstanding centering, brilliant color on bright paper, Extremely Fine, a stunning never hinged example of the high value “Widow’s Weeds”. Unitrade U47; C\$2,400. **\$1,200**

Expertization: with 1999 Greene Foundation certificate.

Provenance: Brigham.



- 445 P□ 1897, Queen Victoria Jubilee, ½¢-5¢, India proofs mounted on card. (50P-54P). Blocks of four. Large margins, fresh and choice, Extremely Fine. Unitrade 50P-54P. **Unitrade C\$1,440 as singles**



- 446 ★★ 1897, Queen Victoria Jubilee, ½¢ black. (50). Original gum never hinged, perfectly centered, intense color on bright paper, a Superb gem. Unitrade 50; C\$420. **\$275**

Expertization: with 2022 Greene Foundation certificate.



- 447 ★★ 1897, Queen Victoria Jubilee, 8¢ dark violet. (56). Top margin single with part imprint, original gum never hinged, with two dots between “T” and “C” of eight cents, beautifully centered, wide margins, fresh Extremely Fine. Unitrade 56; C\$600. **\$300**

Expertization: with 2022 Greene Foundation certificate.



- 448 ★★ 1897, Queen Victoria Jubilee, 15¢ steel blue. (58). Original gum never hinged, choice centering, beautiful color, fresh, Very Fine to Extremely Fine. Unitrade 58; C\$1,200. **\$675**



- 449 ★ 1897, Queen Victoria Jubilee, 50¢ ultramarine. (60). Original gum lightly hinged, well centered, brilliant color and paper, choice Very Fine. **\$375**



- 450 ★★ 1897, Queen Victoria Jubilee, \$1 lake. (61). Original gum never hinged, rich color, bright and fresh, F.-V.F. **\$1,900**



- 451 ○ 1897, Queen Victoria Jubilee, \$1 lake. (61). Well centered within large margins, rich color, unobtrusive cancel, Very Fine, choice. **\$700**



- 452 ★ 1897, Queen Victoria Jubilee, \$4 purple. (64). Original gum lightly hinged, gum wrinkles, prooflike color and impression, beautifully centered, Extremely Fine, pretty stamp. **\$1,300**



- 453 P 1897-98, Queen Victoria "Maple Leaf", ½¢-10¢, India plate proofs on card. (66P-73P). All fresh and with large balanced margins, 5¢ trifling crease, Extremely Fine. Unitrade 66P-73P. **Unitrade C\$2,140**



- 454 ★★ 1897, Queen Victoria "Maple Leaf", 5¢ dark blue on bluish. (70). Top margin part plate no. imprint single, stamp original gum never hinged (hinged in selvage only), wide margins, stunning rich color, an Extremely Fine jumbo. Unitrade 70; C\$825. **\$500**

Expertization: with 2022 Greene Foundation certificate.



- 455 ★★ 1897, Queen Victoria "Maple Leaf", 6¢ brown. (71). Original gum never hinged, perfectly centered and exceptionally fresh with prooflike color, Extremely Fine, a stunning gem. Unitrade 71; C\$675. **\$350**

Expertization: with 2022 Greene Foundation certificate.



- 456 ★★ 1898, Queen Victoria “Maple Leaf”, 10¢ brown violet. (73).** Bottom sheet margin single, original gum never hinged, excellent centering, gorgeous color, Very Fine to Extremely Fine. Unitrade 73; C\$2,400.

**\$1,500**

Expertization: **with 2017 AIEP Gratton certificate.**



- 457 ★ 1898, Queen Victoria “Maple Leaf”, 10¢ brown violet. (73).** Original gum lightly hinged, beautifully centered within wide margins, stunning rich color, an Extremely Fine gem.

**\$600**



- 458 ★★ 1898, Queen Victoria “Numeral”, 6¢ brown. (80).** Original gum never hinged, crisp color and paper, choice Extremely Fine.

**\$400**



- 459 ★★ 1900, Queen Victoria “Numeral”, 20¢ olive green. (84).** Original gum never hinged, beautifully centered within wide margins, lovely fresh color on bright paper, an Extremely Fine gem. Unitrade 84; C\$3,000.

**\$1,300**

Expertization: **with 2021 Greene Foundation certificate.**





- 460 ★★ 1900, Queen Victoria “Numeral”, 20¢ olive green. (84).** Original gum never hinged, choice centering, beautiful fresh color and sharp impression, Very Fine to Extremely Fine. Unitrade 84; C\$3,000. **\$1,300**  
Expertization: with 2022 Greene Foundation certificate.



- 461 ★ 1898, Imperial Penny Postage, 2¢ black, lavender & carmine, imperf pair. (85a).** Without gum as issued, large margins all around, part sheet margin at left, fresh and crisp, Extremely Fine, choice pair. Unitrade 85a; C\$700. **\$450**



- 462 ★★ 1903, King Edward VII, 5¢ blue on bluish. (91).** Original gum never hinged, beautifully centered within large margins, deep color, Extremely Fine. Unitrade 91; C\$1,400. **\$600**



- 463 ★★ 1903, King Edward VII, 7¢ olive bister. (92).** Top margin single, original gum never hinged, outstanding centering, post office fresh, an Extremely Fine gem. Unitrade 92; C\$1,750. **\$550**  
Expertization: with 2020 Greene Foundation certificate for block.



- 464 ★★ 1903, King Edward VII, 10¢ brown lilac. (93).** Original gum never hinged, choice centering within exceptional margins, rich prooflike color, Extremely Fine, lovely stamp. Unitrade 93; C\$2,800. **\$1,000**  
Expertization: with 2021 Greene Foundation certificate.





- 465 ★ 1903, King Edward VII, 10¢ brown lilac, top margin imperf pair. (93a). Without gum as issued, with large balanced margins on the other sides, signed in top margin by Postmaster William Mulock. Fresh, Extremely Fine. Unitrade 93a; C\$1,500. **\$1,100**

Expertization: with 2022 Greene Foundation certificate.



- 466 ★ 1903, King Edward VII, 20¢ olive green. (94). Original gum, perfectly centered within positively huge margins, brilliant color, tiny thin, Superb apperance. **\$750**



- 467 ★ 1908, King Edward VII, 50¢ purple. (95). Original gum hinge remnant, attractive centering, rich color, F.-V.F. **\$850**



- 468 ★ 1908, Quebec, ½¢-15¢. (96-102). Original gum lightly hinged, mostly quite well centered, F.-V.F. with several Extremely Fine gems. **\$728**



- 469 ★ 1908, Quebec complete, imperf pairs. (96a-103a). All with large balanced margins and bright colors, 15¢ tiny paper flaw top left, lovely set, Extremely Fine. Unitrade 96a-103a; C\$8,000. **\$6,000**



- 470 ★★ 1908, 20¢ Quebec. (103). Original gum never hinged, bright and fresh, F.-V.F. **\$625**



- 471 ★★ 1915, King George V “Admiral”, 2¢ deep rose red, experimental coil, Type “A” backstamp. (Unitrade 106X). Paste-up strip of four, original gum never hinged, usual natural blunt perfs, trivial gum bend, fresh and Fine, scarce. Scott 106 var. **Unitrade C\$1,000**  
 Expertization: with 2022 Greene Foundation certificate.



- 472 ★★ 1912, King George V “Admiral”, 5¢ dark blue. (111). Original gum never hinged, fresh and choice, F.-V.F. **\$450**



- 473 ★★ 1912, King George V “Admiral”, 7¢ straw. (113b). Original gum never hinged, beautifully centered for this scarce shade, bright color, Very Fine. Unitrade 113b; C\$1,400. **\$475**  
 Expertization: with Gratton AIEP certificate.



- 474 ★ 1912, King George V “Admiral”, 10¢ plum. (Unitrade 116). Bottom margin single with full lathework Type “B”, original gum lightly hinged, wonderfully well centered within incredibly balanced margins, stunning rich color on bright paper, Extremely Fine. Scott 116. **Unitrade C\$4,000**

IT IS DIFFICULT TO IMAGINE A FINER 10¢ PLUM MINT SINGLE, ESPECIALLY WITH THE TYPE B LATHEWORK.

Expertization: with 2022 Greene Foundation certificate.



- 475 ★★ 1912, King George V “Admiral”, 10¢ plum. (116). Original gum never hinged, exceptionally well centered, gorgeous color, Extremely Fine, truly scarce *this* choice! Unitrade 116; C\$1,200. **\$700**
- Expertization: with 2022 Greene Foundation certificate.



- 476 ★★ 1912, King George V “Admiral”, 50¢ black. (120a). Original gum never hinged, well centered within very large margins, brilliant rich color, Very Fine, striking. Unitrade 120a; C\$2,200. **\$700**
- Expertization: with 2022 Greene Foundation certificate.



- 477 ★★ 1923, King George V “Admiral”, \$1 orange. (122). Upper left corner margin single, original gum never hinged, choice centering within wide balanced margins, rich glowing color, Extremely Fine, a superb gem. Unitrade 122; C\$450. **\$215**
- Expertization: with 2003 Greene Foundation certificate.



- 478 ★★ 1926, King George V “Admiral”, 2¢ on 3¢ carmine, double surcharge. (140a). Original gum never hinged, post office fresh, rich color, F.-V.F. Unitrade 140a; C\$400. **\$400**  
 Expertization: with 2022 Greene Foundation certificate.



- 479 ★ 1928, King George V “Scroll” definitives, 1¢ to \$1 complete. (149-159). Original gum mostly light hinged, fresh set, F.-V.F. **\$743**



- 480 ★★ 1929, 50¢ Bluenose, “Man in the mast” variety. (Unitrade 158iii). Original gum never hinged, F.-V.F., a bright fresh example of this scarce variety. Scott 158 var. **Unitrade C\$3,000**  
 Expertization: with 2022 Greene Foundation certificate.



- 481 ★★ 1930, King George V, 12¢ to \$1, imperf pairs. (174a-177a).** Original gum never hinged (20¢ tiny gum skip), large balanced margins, fresh colors, Extremely Fine, quite scarce, only 75 sets issued and especially scarce in this choice never hinged condition. Unitrade 174a-177a; C\$10,000. **\$5,800**



- 482 ★★ 1930, 50¢ Grand Pré. (176).** Original gum never hinged, essentially perfectly centered, brilliant color, Extremely Fine, choice. Unitrade 176; C\$600. **\$350**  
Expertization: **with 2022 Greene Foundation certificate.**





- 483 ★ 1930, \$1 Mt. Cavell, imperf upper left corner margin pair with plate no. 1. (177a). Original gum very lightly hinged almost entirely in margin, large margins, choice color, Extremely Fine, gem pair, only 75 issued and we are not aware of another plate number pair. Unitrade 177a; C\$1,000. **\$875**



- 484 ★★ Special Delivery, 1898, 10¢ blue green. (E1). Original gum never hinged, beautifully centered, exceptionally fresh with stunning rich color, an Extremely Fine gem. Unitrade E1; C\$1,000. **\$400**  
Expertization: with 2022 Greene Foundation certificate.



- 485 ★★ Registry, 1875, 5¢ dark green, imperf vertical pair. (F2c). Original gum never hinged, re-entry of left side frame lines on top stamp, exceptionally bright and fresh, Very Fine. Unitrade F2c; C\$3,000. **\$2,100**

IN OVER 20 YEARS OF AUCTION LISTINGS ON STAMP AUCTION NETWORK, THERE IS NOT ONE NEVER HINGED PAIR OF THE IMPERF 2¢ REGISTRY LISTED. WE ARE ALSO UNAWARE OF ANOTHER EXAMPLE OF THIS RE-ENTRY.

Expertization: with 2022 Greene Foundation certificate.



- 486 ★ **Postage Due, 1906-1934, small group. (J1-14).** Complete sets, original gum lightly hinged, fresh F.-V.F. **\$480**



- 487 ★□ **War Tax, 1915-16, Lathe Work. (Unitrade MR1, 2, 4).** Blocks of four with full type "B" lathework. Original gum lightly hinged top, bottom stamps never hinged, beautifully centered, bright and fresh, Very Fine, a lovely set of blocks. Scott MR1, 2, 4 var. **Unitrade C\$1,800 as singles**



- 488 ○ **War Tax, 1915, 5¢ dark blue, 4-line overprint. (Unitrade MR2Bi).** Perfectly centered in the largest margins imaginable, light cancel, gorgeous color, Superb jumbo and surely the finest used single. **Unitrade C\$150**

Expertization: with 2022 Greene Foundation certificate.



- 489 ★★ **War Tax, 1916, 2¢+1¢ carmine, die II. (MR3a).** Bottom margin single, original gum never hinged, beautifully centered, stunning rich color, choice Extremely Fine, beautiful stamp. Unitrade MR3a; C\$1,200. **\$625**

Expertization: with 2021 Greene Foundation certificate.



- 490 ★★ **War Tax, 1916, 2¢+1¢ carmine coil, die I. (MR6).** Original gum never hinged, perfectly centered, bright color, Extremely Fine. Unitrade MR6; C\$600. **\$400**  
 Expertization: **with 2021 Greene Foundation certificate.**



- 491 ★★□ **Official, 1950, 10¢ Fur, without “G”. (O26a).** Error middle left stamp in a block of six. Original gum never hinged, Very Fine, scarce. Unitrade O26a; C\$850. **\$925**  
 Expertization: **with 2022 Greene Foundation certificate.**

## U.S. GROUPS AND COLLECTIONS

### U.S. GROUPS

- 492 ○ **19th Century Used Stock, 1851-1890.** 43 stamps plus a strip, mostly better items includes 9 (strip of 3), 11 (mint most original gum), 14, 15 (2), 33 (2), 37, 71, 89, 95-98, 100 (2), 112, 116, 117 (4), 134, 138, 155, 165, 191, 229, faults to be expected, mostly small or minor, but all are attractive with some nicer cancels. **\$9,200**
- 493 ○ **fine quality 19th Century used selection.** 16 items, comprised 17, 28, 30A, 33, 98, 115, 121, 149, 151 (3), 152, 154, 165 greenish black (PF cert), 291, 313, some small flaws or reperfs to be expected but none affect the appearance and there are some sound, highly attractive lot. **Estimate 1,000 - 1,500**
- 494 ○ **Exceptionally Attractive Used Selection 1857-1898.** 41 stamps, collected for centering and with an eye for cancellations, includes 23, 30, 37-38, 71, 77b, 86, 87, 89, 121, 146-153, 165(2), 191, 218 (3), etc., many have faults though mostly minor and none affecting appearance, there are sound examples as well, a truly choice appearing lot, three certificates accompany. **\$7,700 approx.**
- 495 ○ **Used balance of consignment.** Comprised #63 blue cancel, 536, JQ1, all beautifully centered, neatly cancelled and fresh, each with 2022 P.S.E. certificate, last two graded 85. **Estimate 75 - 100**
- 496 ★ **Bank note issues, 1879-1893.** Over 50 stamps, almost all original gum, some hinge remnants to lightly hinged, possibly a never hinged or two, includes 189, 215 (2), 217 (3), 219D (2), 220a, 220c (2), 224 (4), 226 (3), 227-228, 229 (2), few flaws, perhaps a couple of reperfs but mostly nicely centered and fresh, F-VF. **\$7,500 approx.**
- 497 ★ **Small group of early regular issues.** 12 stamps including 211, 214 (2, never hinged), 255-256, 309, etc., a few regummed, a few never hinged, some reperfed or small faults and some Very Fine, all attractive, 1 cert. **Estimate 400 - 500**
- 498 ★ **Collector's duplicates, 1893- 1920.** Approximately 150 items, assembled many years ago by a quality conscious collector, and these are items that had been upgraded, virtually all original gum and even a few never hinged, strength in early commems, excellent bureau and Washington-Franklin issues, possibly a few flaws and maybe a reperf or two, but overwhelmingly F-VF with many Very Fine or Extremely Fine examples, two certs accompany. **\$12,000 approx.**
- 499 ★★□ **Early Commem Blocks of four. (231//325).** 12 blocks, all original gum never hinged, comprised 231, 233, 234 (2), 235-236, 285, 288, 294-295, 297, 325, perhaps a slight gum bend or two, but all fresh and well centered, Very Fine. **\$6,750 as singles**
- 500 ★★ **Collector's Accumulation of Commems, 1893-1926.** Approximately 30 items, appears to be all original gum never hinged, including 232 (2), 233, 235, 237, 290, 296-298 (2), 326, 630 etc., possibly a reperf or two but most well centered and fresh, Very Fine. **\$3,800 approx.**
- 501 ★ **1893 Columbian Accumulation. (230-244).** 30 stamps, 1-5 of a number, most original gum, few never hinged, few part original gum and a few regums, condition a bit mixed but plenty F-VF. **Estimate 1,000 - 1,500**
- 502 ★★/★ **Balance of High Quality Commem Lot.** 39 stamps, chosen for centering (except 369 which is never hinged), including 238 (2), 296, 297-298 (2 each), 299, 325-326, etc., few regums and/or reperfs, but most VF-XF original gum with some never hinged, very saleable lot, one cert. **Estimate 750 - 1,000**
- 503 ★□ **Early Commems blocks of four.** Seven blocks of four and one plate block, includes #286, 323 (plate block of six, some separation reinforced), 324 (two blocks), 329, etc., original gum with many never hinged stamps. **\$1,378**

- 504 ★★/★ Selection of Early Commems and Airmails.** 29 items, almost all original gum, over half never hinged (including all the Pan Americans, all the 3¢ Louisiana Purchase C1-2, C4-5, etc.), few hinge remnants, few regummed, some small minor faults but most F-VF, fresh and very saleable lot. **Estimate 750 - 1,000**
- 505 ★ Washington-Franklin Coil Accumulation.** Collector's accumulation of coil pairs and line pairs, most original gum lightly hinged and some never hinged, including 391 pair (never hinged), 487 line pair, 488 line pair (never hinged), 492 line pair (never hinged), 493 (3 line pairs, one never hinged), 495 (pair and line pair never hinged), 497 (never hinged pair and LH line strip of 4), F-VF or better throughout with some gems, two certs accompany. **\$2,500 approx.**
- 506 ★★ Group of high quality commems, 1909-1921.** Original gum never hinged, selected for centering and freshness, including 373 (2 arrow blocks), 548-50 (blocks), 614-16 (blocks), 630 (choice sheet), VF-XF throughout. **\$1,900 (approx.)**
- 507 ★ Group of commems, 1909- 1925.** Original gum lightly hinged, few stamps never hinged, selected for centering, the 537 plate block has a single light hinge, VF-XF. **\$545 (approx.)**
- 508 ★ 1910-1911 SL Watermark. (374//382).** Seven different, original gum mostly lightly hinged, choice centering with several jumbos, Very Fine to Extremely Fine. **\$410**
- 509 ★★ 1913-1915 SL Watermark perf 10. (426//435).** Six different, original gum never hinged, fresh and well centered, Very Fine to Extremely Fine, choice group. **\$530**
- 510 ★★ Select Group of Regular Issues. (492//664).** 21 stamps, original gum never hinged (561, 570, 573 natural gum skips), beautifully centered, including 518 (3), 569-573, includes three certificates. Very Fine to Extremely Fine. **\$1,193**
- 511 ★★□ 1917-1919 Washington-Franklin perf 11 1¢//50¢. (498//517).** 12 blocks of four, original gum never hinged, fresh and well centered with some gem singles possible, fresh and mostly Very Fine and better. **\$1,660 (as singles)**
- 512 ★★ 1917-1919, unwatermarked perf 11. (498//518).** 12 stamps, original gum never hinged, selected for colors and centering, Very Fine to Extremely Fine, gem lot, one certificate accompanies. **\$267**
- 513 ★ 1917-1919, Unwatermarked perf 11. (502//518).** 11 different, original gum lightly hinged, fresh colors, selected centering, Extremely Fine, choice. **\$232**
- 514 ★□ Small Group of Regular Issues.** Blocks of four, 508//622, 12 blocks, including 515, 532, 536 (2) 538, 540-541, original gum mostly lightly hinged or never hinged, most quite well centered, Very Fine. **\$1,310**
- 515 ★ 1919-1920 Offset and Coil Waste Issues.** Small group of singles and pairs, original gum, few never hinged, includes 532 (2, 1 never hinged), 533 (gum skip), 538a, 540a, fresh, excellent centering, with several gems. **\$660**
- 516 ★★ 1919-1925 Commems. (537//621).** Complete, original gum never hinged, assembled decades ago, every stamp a gem, Extremely Fine. **\$213**
- 517 ★★ 1938 Presidentials, 1956 Liberty issue.** Lot of high value singles, blocks and plate blocks including 832-834 plate blocks, 832b, 1053 (3 plate blocks), original gum never hinged, Very Fine. **\$1,700**
- 518 ★★ Choice Airmail group. (C1//C18).** Six different, original gum never hinged, C1-3, C5-6, C18, all fresh and beautifully centered. Very Fine to Extremely Fine. **\$685**
- 519 ★★/★ Back of Book selection.** 31 stamps, all original gum generally lightly hinged many never hinged, includes C18 (2 never hinged), E6, F1 (two, one never hinged), J49 (never hinged), K11 (never hinged), Q8 (reperfed), O40 (reperfed), Guam 7 (trace of original gum), fresh and well centered throughout, VF-XF. **Estimate 500 - 750**



- 520 ★/○ Special Delivery Selection.** 14 unused stamps and four used, the unused are all with original gum except one E1, most F-VF, includes mint E1 (3), E3, E5-6, E8-9, E11 (3 never hinged), several with small faults or reperfed, most F-V or better. **\$3,200**
- 521 ★ Postage Due Balance.** Six stamps comprised: J1, 26, 28, 44, 56-57, original gum except J26, paper adherence on gum, and J44 regummed, J57 trivial thin, otherwise F-VF. **\$1,555**
- 522 ★ Select Shanghai Group.** Comprised K5, 7, 9, 10, 12, 18, original gum lightly hinged, bright and fresh, choice centering, Extremely Fine. **\$440**
- 523 ★/○ CSA Balance.** 4 items: #5 (tied on small piece with blue town cancel, Very Fine), 8 (mint Extremely fine, probably never hinged), 12 (original gum light toning), 13 (tied on piece, slight discoloration from postmark, signed Dietz). **\$1,400**
- 524 ★ Confederacy, small group of singles and blocks.** All original gum, some of the singles and all of the blocks (except #8) are never hinged, the #11 block has gum wrinkles, fresh and generally Very Fine. **Estimate 300 - 400**

### U.S. COLLECTIONS

- 525 ★/○ Collector's accumulation, 1847-1935.** Couple 1,000 stamps, mostly used, generally up to 20 of a number, loaded with stamps in the \$50-\$300 cat value range, the majority have small faults, but by no means all— there are some fine copies, rough catalogue value (trying to avoid badly damaged), over \$50,000. **Estimate 4,000 - 5,000**
- 526 ★ Highly attractive collection, 1851-1972.** In a Scott National album, the 19th century is quite decent, mostly original gum, some faults, mostly minor with plenty F-VF. Highlights include: 11, 63, 113 (2), 116, 189, 205, 219-28 (less 225 and 220a), 230-40, 260-61, 271-276, 278 (used), 279-284 (two sets, only one 279B), 285-290. The quality in the 20th century dramatically improves with the large majority being F-VF or better. Highlights include 300-310, 323-341, 367-382, 414-440, 547-595 (less 594), 599A, 630, 634A, 658-679, apparently complete 1930-1972, back of book includes Airs complete (nice set of Zepps), E1-3, 10, Q1-11, etc. Lovely collection. **\$30,000 approx.**
- 527 ★ Accumulation of better unused 1851-1920.** Over 100 items, almost all original gum from Scott #227, including #9L (2), 36b, 69, 73, 87, 93, 97, 112-114, 119, 123, 161, 227, 239 (3), 240 (2), 241, 275-276, 285-292, 310 (2), 326-27, 369 (2), 400 (4 and a block), 418 (2), 421, 460, 479, 524, 547. Mixed condition, flaws, reperfs, etc., but plenty F-VF with the occasional gem, and virtually all of very attractive appearance. **Estimate 4,000 - 5,000**
- 528 ○ Old time 19th Century Collection.** Approximately 150 stamps plus a few covers, 1861-1898 mostly collected for attractive appearance, highlights include 70b red numeral cancel, 71 (2), 76 (3), 77 (2), 86, 89-90, 98, 114 (block), 149 (\*), 152-153, 155 (2), 162 (3), 165-6, 230-242, 244, 276, 285-291 (2), etc., most of the better have faults, many minor, but among the lesser values are some gems, worth a careful look. **\$12,000+**
- 529 ★ Questionable Washington-Franklin, coil singles, pairs, and line pairs.** Approximately 30 pairs and line pairs and 25 singles, few if any appear to be genuine including 10 items with not genuine certificates (3 of which have previous certs saying "genuine"), excellent lot for study purposes. **Estimate 200 - 300**
- 530 ★ Balance of Collection, 1916-1930.** Over 100 stamps plus coil pairs and line pairs, few imperf pairs and a couple used, includes 422, 573, better line pairs and 1925 Commems, most F-VF, original gum, some never hinged. **Estimate 400 - 500**
- 531 ★★ Commem singles and blocks, 1927-1950.** Mounted, including 646-648, blocks 704-715 (2 sets of blocks, one set of plate blocks), 752-770 complete in centerline or cross gutter blocks plus two additional sets of 756-65 centerline blocks, appears complete 1935-1950 in blocks, a few possible lightly hinged (including a set of blocks and the plate blocks of 704-15, lightly hinged at top), Very Fine throughout and overall exceptional centering with some possible high grades. **\$2,300 approx.**



- 532 ★ **Airmail Collection, 1918-1970s.** Singles and some coil pairs and line pairs, blocks and booklet panes, including nice set C1-6, some VF-XF early blocks, C10a (2 panes, one never hinged, one XF lightly hinged and 2 complete booklets, fresh and fine), C18 (4 and a cover), C61 (2 line pairs), appears to be F-VF or better throughout. **Estimate 500 - 750**
- 533 ★ **Balance of Officials Collection.** 48 different, including O1-2, 6, 8-9, 17-24, 35-45 (less O40), O47-67, O93, O95 (used), O96, some regummed, disturbed original gum or no gum, but the majority are original gum, few reperfs/small flaws, but most F-VF, above average condition of these challenging stamps. **\$9,500 approx.**
- 534 ★ **Comprehensive balance of a high quality collection of cut squares 1853//1972.** Largely complete, less the rarest items, probably half or more are full corners, highlights include 9-16, 24, 28-29, 34-73 (plus U67a, less U37, U48-49), 74-109 (less 89-90), 154, 172-217 (less U185, 197, 200, 213), 222-240 (less 226), 273-74, 286-88, 318-22, 324-347, 454, 456-57, 474-479, 489, 493-94, 500-506, 511, 520, UO14-17, 26-28, 30-43 (less UO38), 44, 46-59, 67-8, etc., while there are a few cut small or with minor faults, the overwhelming majority are VF-XF, a simply outstanding holding that would make a wonderful start on a most serious cut square collection. **\$30,000 approx.**
- 535 ★ **Balance of postal stationery, cut squares, and entires collection.** Mostly 19th century, including a few used excellent variety with some modest duplication, loaded with better cut squares including: U1, 18, 23, 43-45, 67a, 68-73, 97, 99-101, 169, 195, 206 (2), 214-217, 243-244, 273, 439 G, 457, UO23, WO33, UO43, etc., many are full corners, entires include used U1, 3, 5, 7 (4), 8 (2), unused include U2, 13, 36, 38, W53, 55, U60-63, 94-95, 196, 201-202, 210, 212, 344-47, UO64, etc., while there are a few flaws or small margins, condition overall is fresh and Very Fine. **\$24,000 approx.**
- 536 ★ **Cut square collection, 1853-1970.** Neatly mounted on Scott pages, loaded with cut squares in the \$100-\$300 range. Highlights include: U3, 11, 13-15, 17-18, 23, 28-29, 40-45, 68-88, 93, 95, 99-100, 103-104, 107, 176, 186, 200, 318, 320-321, 476, UO8, UO59, UO62, UO68. Some of the best items are cut close or have minor faults, but the large majority are fresh and Very Fine, good collection on which to build. **\$15,000 approx.**
- 537 ★★ **Hunting Permits collection, 1936-2007. (RW3//39).** Fairly complete, including RW3, 6-7, 9-39 (9, 14, 17 hinged and not included in cat value), and apparently complete 1973-2007 including a few duplicates, appears to be original gum never hinged and Very Fine throughout. Face on modern \$400. **\$3,325**

### U.S. FACE VALUE LOTS

- 538 ★★ **Complete sheet accumulation, 1995-2010.** Several hundred complete sheets, excellent variety, mostly 2-10 of a number, includes many of the premium items of the period, such as Civil War (2975, 14 sheets), many of the American Music Series issues, many of the Nature of America series, three sets Space souvenir sheets (3409-3413), a Red Fox sheet (3036), original gum never hinged, virtually all Very Fine. Lovely clean lot. Face value at least \$3,600. **Estimate 2,500 - 3,000**
- 539 ★★ **Post Office sealed packs of panes or souvenir sheets, 2000-2010.** Comprised: 3408 (100 panes), 3694 (100 souvenir sheets), 4414 (200 panes), 4665a (120 panes). Face value \$3432. **Estimate 2,000 - 3,000**
- 540 ★★ **Scenes from Harry Potter Movies 2013.** Three post office sealed packs, 25 folded booklets per pack (75 booklets total), so put down your tongs and grab your wands, these booklets will surely cast a spell on you Face value \$900. **Estimate 1,000 - 1,500**

## CANAL ZONE COLLECTIONS

- 541 ★ Nearly Complete Collection.** Highlights include 2-3, 9 (spaced "L" in a block), 19 (2 blocks), 46 (2), 53-54, 59-66 (less 60), 70-95, C1-20 (including 5a), good postage dues, etc., some flaws and/or gum issues, and plenty of F-VF, fresh attractive collection. **\$5,800 approx.**
- 542 ★/O Collection of Stamps, Stationery, and First Day Covers.** Highlights include mint 7-8, 19 var. (overprint shifted so the "8" is not visible to naked eye), 22-41 (37 used), 46, 47 (used), 48 (small thin, cert), 49-67 (last with cert), 60b (cert), 70-95, better postage dues, 120-135 First Day Covers, C15-20 (on one flown FDC, some flaws and/or gum issues to be expected but mostly F-VF. **Estimate 1,000 - 1,500**
- 543 ★/✉ Postal Stationery, Entires and Postal Card Collection.** Mounted in Scott album, about a dozen entires including U1-U2, U2a (toned specks), UC1 (2, different sizes, large size light toning), etc. and about 15 postal cards including UX2 (2), 2d, 3-4, 7-8, etc., virtually all fresh and Very Fine. **\$1,150 approx.**

## CANADA GROUPS AND COLLECTIONS

## CANADA GROUPS

- 544 ★ mint selection, 1897-1908.** 31 stamps including a couple of duplicates and two used, including 50-55, 58-60, 70, 71, 82-83, 92-93, 95, etc., most original gum (60 no gum, 95 regummed), some hinge remnants, a few minor faults but a most attractive lot. **Estimate 500 - 750**
- 545 ★★/★ Assortment, 1908- 1929.** Fresh lot, one or two of each, original gum most hinge remnants but some are never hinged (generally where there are two of each), appear to be all F-VF or better (except 111 (2), 116, 133 with thins), attractive lot. **\$3,385**
- 546 ★ Admirals selection.** 26 stamps plus a pair, original gum most lightly hinged, Very Fine to Extremely Fine with some jumbos. **\$1,240**
- 547 ★★ George V coils 1912-1935.** Original gum never hinged, four singles and six pairs, F-VF with several Extremely Fine. **\$447**
- 548 ★★/★ Airmails and Special Delivery group.** 26 stamps, 1-3 of each, F-VF, original gum some never hinged, including never hinged C1-4, CO1-2, E8, EO1-2, etc. **\$700**

## CANADA COLLECTIONS

- 549 ★★/★ Connoisseur's selection, 1859-1920s.** Choice lot of over 80 items, the majority are mint singles, including lovely groups of Large and Small Queens, Jubilees, "Leafs" and Admirals, also includes a few used, postal history, and provinces. While there are a few scattered trifling flaws, the overwhelming majority are original gum, mostly never hinged. Very Fine or better with some real gems, over 40 certificates. a simply stunning group. **Estimate 5,000 - 7,500**
- 550 ★ Collection/Accumulation, 1920-1940s.** Over 150 stamps, modest duplication, F-VF throughout, original gum most lightly hinged, some never hinged. **\$1,500+**